



Environment, Energy and Climate Action

PEI WATER QUALITY REPORT CARDS

2020



Prince Edward Island Watershed Water Quality Report Cards

2020

PEI Department of Environment,
Energy and Climate Action

Published July 2022

For further information:
Water and Air Monitoring
Section (902) 368-5179

Prince Edward Island 2020 Watershed Water Quality Report Cards

Prince Edward Island Department of
Environment, Energy and Climate Action

July 2022

Prince Edward Island Watershed Water Quality Report Cards 2020

The Department of Environment, Energy and Climate Action has developed an overview of water quality on a watershed basis in P.E.I. It is intended as a general guide so that Islanders can get a sense of the health of water and make general comparisons to other P.E.I. watersheds. The data and information used in these reports is current to the end of 2019.

Go to the report card for a specific watershed by selecting one of the watersheds from the list below:

Augustine Cove	Foleys Pond	Ox/Sheep River
Bains Creek	Freeland Creek	Percival River
Baltic River	Grand River	Pinette River
Barbara Weit River	Hebron	Pollard Brook
Bear River	Hillsborough River	Rayners Pond
Belle River	Hope River	Round Pond
Big Pierre Jacques River	Hornes Creek	Shipyard River
Black Marsh	Hunter / Clyde River	Skinners Pond
Black Pond Brook	Indian River	Souris River
Boughton River	Jacques River	Southwest River
Brae River	Kildare / Montrose R	St. Chrysostome/Barachois
Bristol Creek	Little Miminegash River	St. Peter's Bay
Brooks River	Little Pierre Jacques R	St. Philip Shore
Brudenell River	Little Tignish River	Stewarts Creek
Campbellton	Lukes Creek	Tignish River
Cape Kildare	MacLaurins Creek	Tracadie Bay
Cape Traverse River	MacWilliams Brook	Trout / Bideford River
Cardigan River	Mill River	Trout / Foxley River
Chapel Creek	Miminegash River	Trout / Stanley River
Cousins Pond	Montague / Valleyfield	Tryon River
Covehead / Brackley Bays	Morell River	West River
Crossmans Brook	Murray River	Westmoreland River
Deroche Pond	Nail Head	Wheatley River
Desable River	Nail Pond	Wilmot River
Dunk River	North Lake	Winter River
Enmore River	North River	
Flat River	Orwell /Vernon Rivers	

These results are also available on the [PEI Water Registry](#).

[Data Acknowledgement](#)

Contact Information

If you have any questions regarding this document, please contact:

Cindy Crane, Surface Water Biologist
Department of Environment, Energy and Climate Action

Telephone: (902) 368-5179 Fax: (902) 368-5830

Email: cscrane@gov.pe.ca

Data Acknowledgement

The PEI Department of Environment, Energy and Climate Action (EECA) gratefully acknowledges the contribution of data, used in the calculation of water quality scores [for the PEI Water Quality Report Cards](#) (2020), from the groups and agencies listed in the table below.

Group	Data Contributed	Data Source
Bedeque Bay Environmental Management Association	water temperature, dissolved oxygen, FW nitrate	1, 2, 3
Belfast and Area Watershed Grouping	siltation and other issues, water temperature	2, 3
Cascumpec Bay Watershed Association Inc.	siltation and other issues	3
Central Queens Branch of the PEI Wildlife Federation	FW nitrate, siltation and other issues	1, 3
Cornwall and Area Watershed Group Inc.	siltation and other issues	3
Harmony and Area Watersheds Enhancement Group	FW nitrate, siltation and other issues	2, 3
Environment and Climate Change Canada	FW nitrate and other SW data	1
Harmony and Area Watersheds Enhancement Group Inc.	FW nitrate, siltation and other issues	2,3
Hillsborough Area Watershed Co-operative	siltation and other issues	3
Hillsborough River Association - Pisquid	SW temperature	1
Hillsborough River Association - Wrights	siltation and other issues	3
Hunter - Clyde Watershed Group Inc.	siltation and other issues	3
Kensington North Watersheds	siltation and other issues, SW nitrate	1, 3

Association Ltd.		
Lot 11 and Area Watershed Management Group Inc.	siltation and other issues	3
Morell River Management Co-operative	siltation and other issues	3
Roseville / Miminegash Watersheds Inc.	siltation and other issues	3
Souris and Area Branch of the PEI Wildlife Federation	SW temperature	3
Southeast Environmental Association	siltation and other issues	3
Stratford Area Watershed Improvement Group	siltation and other issues, SW temperature, SW nitrate	1, 3
South Shore Watershed Association Inc.	siltation and other issues, SW nitrate	1, 4
Tignish and Area Watershed Management Group Inc.	siltation and other issues	3
Trout River Environmental Committee Inc.	siltation and other issues, SW nitrate	1, 3
Trout Unlimited Prince County Chapter	siltation and other issues	3
West Point and Area Watersheds Inc.	siltation and other issues	3
Wheatley River Improvement Group Inc.	siltation and other issues, SW nitrate	1, 3
Winter River / Tracadie Bay Watershed Association Inc.	siltation and other issues, SW nitrate, SW temperature	1, 3

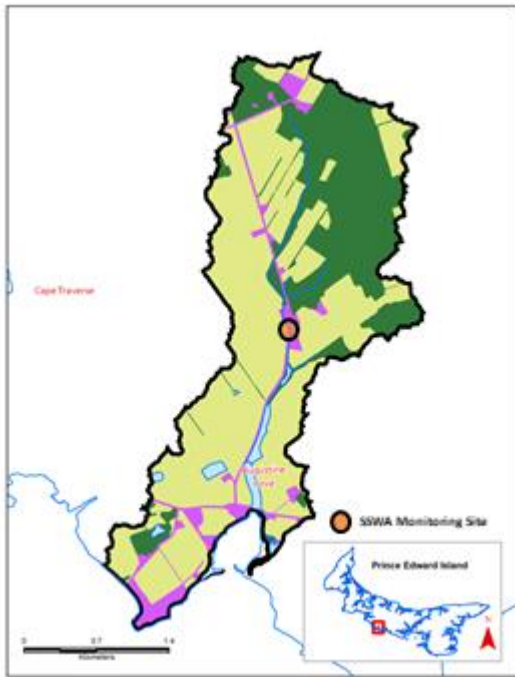
Table Legend

- 1 Atlantic Datastream
- 2 Watershed Group
- 3 2021 Watershed Group Survey
- 4 Pre 2021 consultation with Watershed Groups
- SW Surface Water

EECA very greatly appreciates the assistance of the PEI Watershed Alliance in conducting the 2021 survey of Island watershed groups on siltation and other water quality issues. Thank you especially to Mary Finch and Rebecca Ramos for providing invaluable input on the content of the survey, design and delivery of the survey and compilation of results.

EECA Water and Air Monitoring Section also gratefully recognizes the assistance of our co-workers at the EECA Resource Inventory and Modeling Section for their invaluable assistance in compiling the landuse data and map layers used in this report.

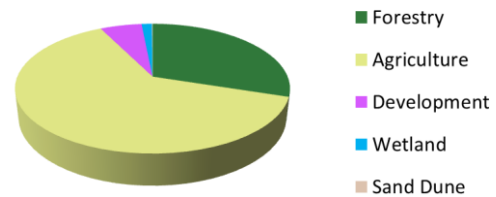
Augustine Cove Map



Water Quality Score



Land Use



Watershed Area
7.77 km²

Status

The Augustine Cove watershed has **Good** water quality. The measured watershed nitrate concentration is 4.7 mg N/l which is in the high range for PEI. This result covers about 51% of the watershed and is from stream sampling data collected by the South Shore Watershed Association (SSWA) (2017-2019). Anoxic events have never been reported in the Augustine Cove estuary and no fish kills related to run-off have been documented in the watershed. Sediment laden run-off (red water) events were reported to occur frequently by the SSWA. The average groundwater nitrate concentration in the watershed is above 3 mg N/l.

Other Information

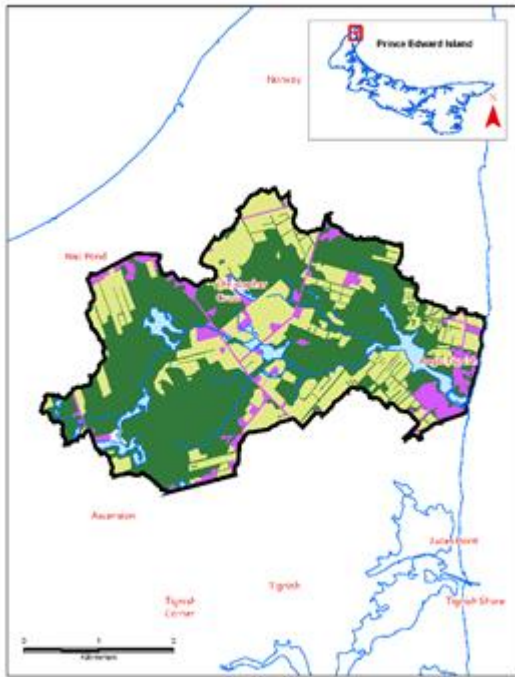
If you have any questions about water quality in this or any other watershed in P.E.I., please contact the provincial Department of Environment, Energy and Climate Action at 1-866-368-5044 and/or the [local community watershed group](#). The Department is working with a local community group, the South Shore Watershed Association Inc., to address water quality issues in the Augustine Cove watershed.

View how the Water Quality Score is calculated [here](#). View the data used for this calculation [here](#).

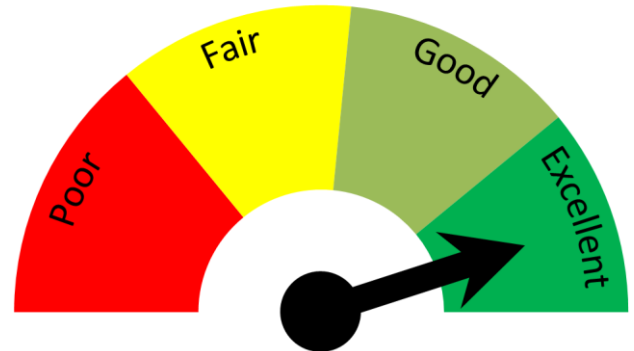
View or download the available raw water quality monitoring data from the PEI Department of Environment, Energy and Climate Action [here](#).

Return to the list of watersheds [here](#).

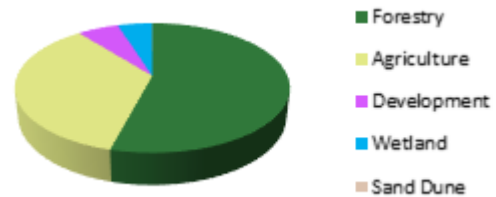
Bains Creek Map



Water Quality Score



Land Use



Watershed Area
13.72 km²

Status

The Bains Creek watershed has **Excellent** water quality. The modeled watershed nitrate concentration is 1.5 mg/l, which is in the low range for PEI. Anoxic events have never been reported in the small Bains Creek estuary and no fish kills have ever been recorded in the watershed. Sediment laden run-off events were recently reported to occur infrequently by the Tignish and Area Watershed Management Association.

Other Information

If you have any questions about water quality in this or any other watershed in P.E.I., please contact the provincial Department of Environment, Energy and Climate Action at 1-866-368-5044 and/or the [local community watershed group](#). The Department is working with a local community group, the Tignish and Area Watershed Management Group Inc., to protect water quality in the Bains Creek watershed.

View how the Water Quality Score is calculated [here](#). View the data used for this calculation [here](#).

View or download the available raw water quality monitoring data from the PEI Department of Environment, Energy and Climate Action [here](#).

Return to the list of watersheds [here](#).

Baltic River Map



Water Quality Score



Land Use



Watershed Area
26.09 km²

Status

The Baltic River watershed has **Fair** water quality. The measured watershed nitrate concentration is 4.9 mg/l which is in the high range for PEI. This result covers about 56% of the watershed and is from stream sampling data collected by the Kensington North Watersheds Association (KNWA) (2012-2013, 2014). Anoxic events were reported in 4 of the 5 years between 2015 and 2019 in both the Hunters Creek (2015-2016, 2018-2019) and Baltic River (2016-2019) branches of the estuary. No fish kills related to run-off have been documented in the watershed. Sediment laden run-off (red water) events were recently reported to occur frequently by the KNWA. Another water quality issue indicated by the KNWA is a lack of riparian cover in the watershed. The average groundwater nitrate concentration > 3 mg/l.

Other Information

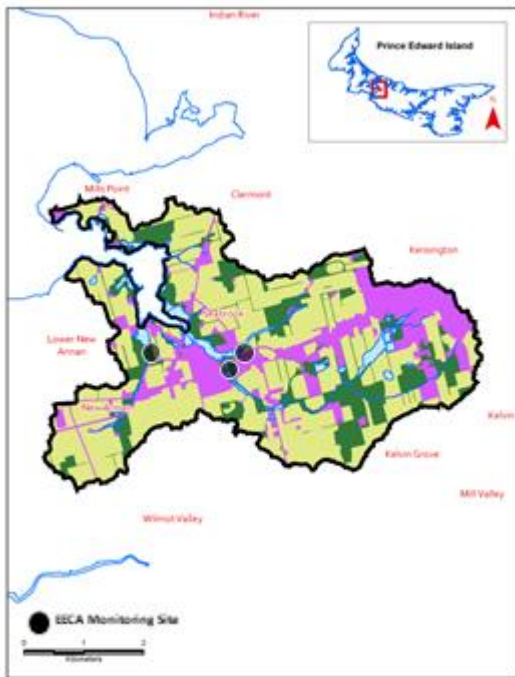
If you have any questions about water quality in this or any other watershed in P.E.I., please contact the provincial Department of Environment, Energy and Climate Action at 1-866-368-5044 and/or the [local community watershed group](#). The Department is working with a local community group, the Kensington North Watersheds Association Ltd., to address water quality issues in the Baltic River watershed.

View how the Water Quality Score is calculated [here](#). View the data used for this calculation [here](#).

View or download the available raw water quality monitoring data from the PEI Department of Environment, Energy and Climate Action [here](#).

Return to the list of watersheds [here](#).

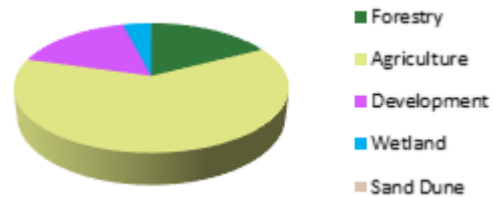
Barbara Weit River Map



Water Quality Score



Land Use



Watershed Area
20.80 km²

Status

The Barbara Weit River watershed has **Fair** water quality. The measured watershed nitrate concentration is 4.5 mg/l which is in the high range for PEI. This results covers about 68% of the watershed and is from stream sampling data collected by the Department of Environment, Energy and Climate Action (2011, 2013, 2015, 2018) and the Kensington North Watersheds Association (KNWA) (2019). Anoxic events were recorded in the estuary in 2 of the last 5 years (2016, 2018). No fish kills related to run-off have been reported in the watershed. Sediment laden run-off (red water) events have recently been reported to occur infrequently in the watershed by the KWNA.

Other Information

If you have any questions about water quality in this or any other watershed in P.E.I., please contact the provincial Department of Environment, Energy and Climate Action at 1-866-368-5044 and/or the [local community watershed group](#). The Department is working with a local community group, the Kensington North Watersheds Association Ltd., to address water quality issues in the Barbara Weit River watershed.

View how the Water Quality Score is calculated [here](#). View the data used for this calculation [here](#).

View or download the available raw water quality monitoring data from the PEI Department of Environment, Energy and Climate Action [here](#).

Return to the list of watersheds [here](#).

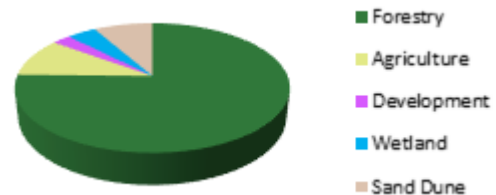
Bear River Map



Water Quality Score



Land Use



Watershed Area
17.36 km²

Status

The Bear River watershed has **Good** water quality. The measured watershed nitrate concentration is 0.3 mg N/l which is in the very low range for PEI. This result covers about 96% of the watershed and is from stream sampling data collected by the Department of Environment, Energy and Climate Action (2017-2019). There is no downstream estuary so estuarine anoxia is not an issue. No fish kills related to run-off have been documented in the watershed. Expert opinion is that sediment laden run-off (red water) events occur infrequently in the watershed. Some high temperature results have been recorded at one logger site in the river by the Souris and Area Branch of the PEI Wildlife Federation (2016-2017).

Other Information

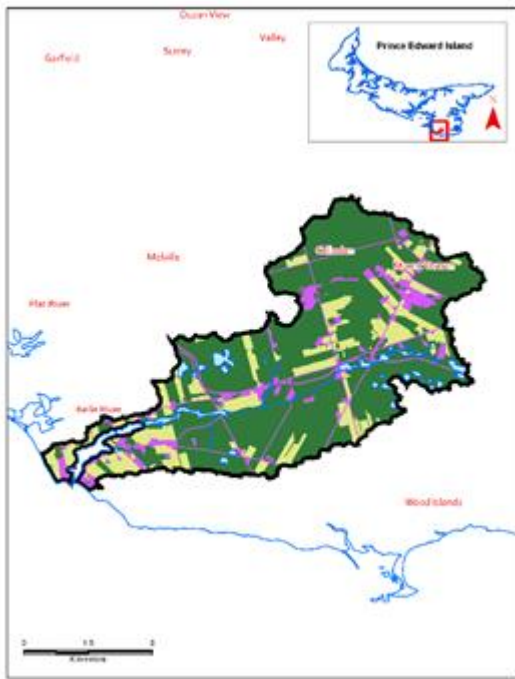
If you have any questions about water quality in this or any other watershed in P.E.I., please contact the provincial Department of Environment, Energy and Climate Action at 1-866-368-5044 and/or the [local community watershed group](#). The Department is working with a local community group, the Souris and Area Branch of the PEI Wildlife Federation, to protect water quality in the Bear River watershed.

View how the Water Quality Score is calculated [here](#). View the data used for this calculation [here](#).

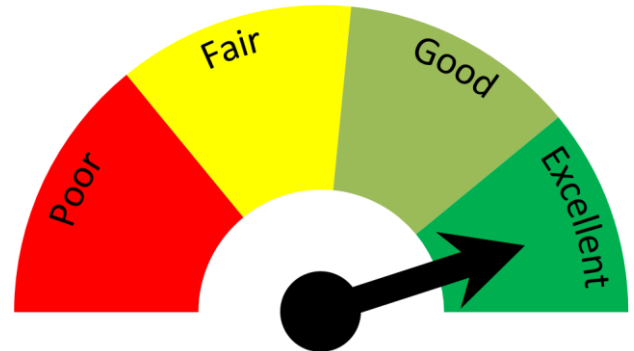
View or download the available raw water quality monitoring data from the PEI Department of Environment, Energy and Climate Action [here](#).

Return to the list of watersheds [here](#).

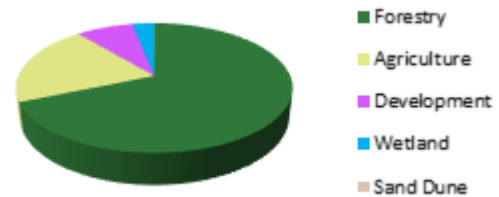
Belle River Map



Water Quality Score



Land Use



Watershed Area
32.97 km²

Status

The Belle River watershed has **Excellent** water quality. The modeled watershed nitrate concentration is 1.0 mg/l, which is in the low range for PEI. No anoxic events have been reported in the small Belle River estuary and no fish kills have been recorded in the watershed. Sediment laden run-off events were recently reported to occur infrequently by the Belfast and Area Watershed Grouping.

Other Information

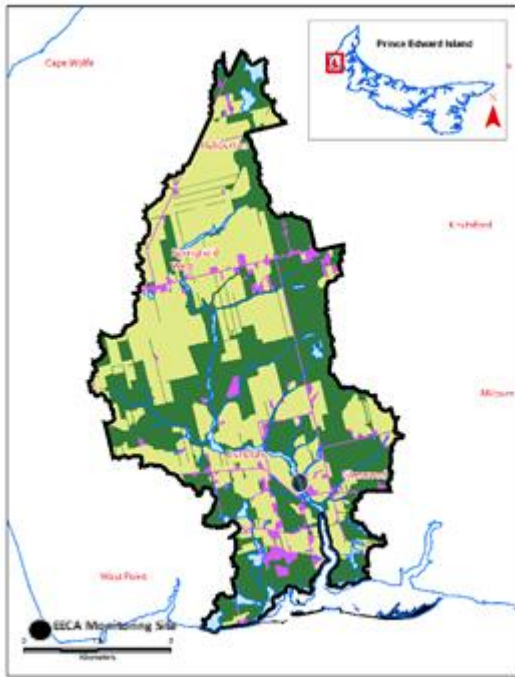
If you have any questions about water quality in this or any other watershed in P.E.I., please contact the provincial Department of Environment, Energy and Climate Action at 1-866-368-5044 and/or the [local community watershed group](#). The Department is working with a local community group, the Belfast and Area Watershed Grouping, to protect water quality in the Belle River watershed.

View how the Water Quality Score is calculated [here](#). View the data used for this calculation [here](#).

View or download the available raw water quality monitoring data from the PEI Department of Environment, Energy and Climate Action [here](#).

Return to the list of watersheds [here](#).

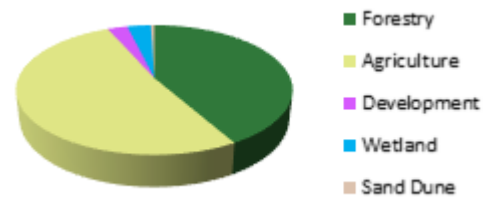
Big Pierre Jacques River Map



Water Quality Score



Land Use



Watershed Area
34.74 km²

Status

The Big Pierre Jacques River watershed has **Fair** water quality. The measured watershed nitrate concentration is 4.1 mg/l which is in the high range for PEI. This result covers about 83 % of the watershed and is from stream sampling data collected by the Department of Environment, Energy and Climate Action (2009, 2014, 2017). No anoxic events have been reported for the small estuary but 2 fish kills related to run-off have occurred in the last 10 years (2011 and 2012). Sediment laden run-off (red water) events were recently reported to occur frequently by the West Point and Area Watersheds Group. The average groundwater nitrate concentration is > 3 mg/l.

Other Information

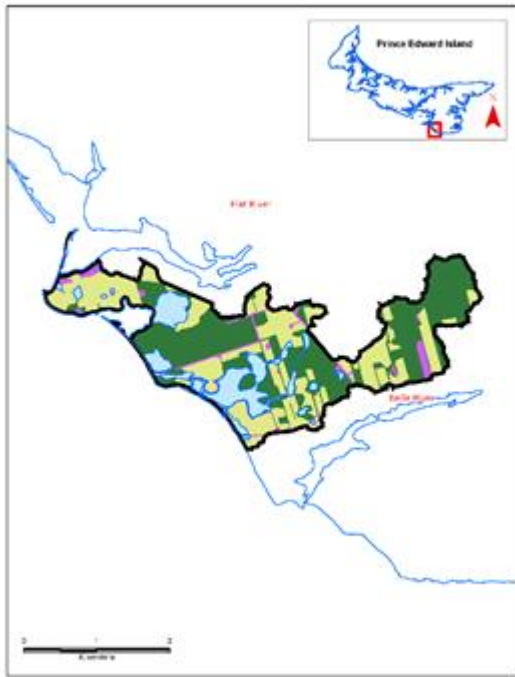
If you have any questions about water quality in this or any other watershed in P.E.I., please contact the provincial Department of Environment, Energy and Climate Action at 1-866-368-5044 and/or the [local community watershed group](#). The Department is working with a local community group, the West Point and Area Watersheds Inc., to address water quality issues in the Big Pierre Jacques River watershed.

View how the Water Quality Score is calculated [here](#). View the data used for this calculation [here](#).

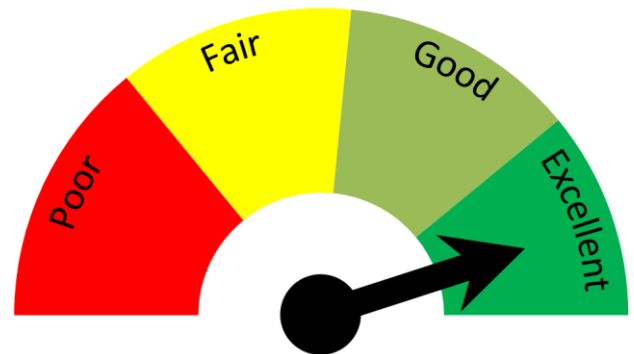
View or download the available raw water quality monitoring data from the PEI Department of Environment, Energy and Climate Action [here](#).

Return to the list of watersheds [here](#).

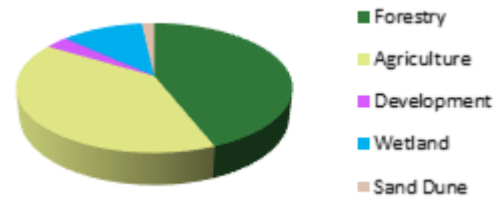
Black Marsh Map



Water Quality Score



Land Use



Watershed Area
7.02 km²

Status

The Black Marsh watershed has **Excellent** water quality. The modeled watershed nitrate concentration is 1.3 mg/l, which is in the low range for PEI. No anoxic events have been reported in the small barrier beach pond and no fish kills have been recorded in the watershed. Sediment laden run-off events were recently reported (2018) to occur infrequently by the Belfast and Area Watershed Grouping (BAWG).

Other Information

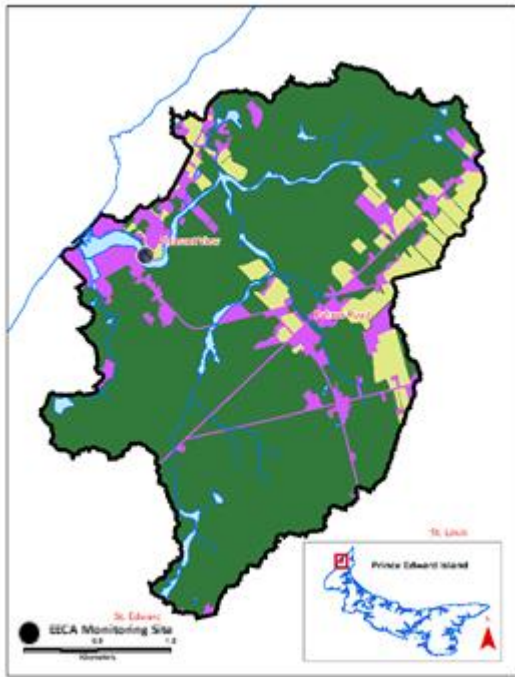
If you have any questions about water quality in this or any other watershed in P.E.I., please contact the provincial Department of Environment, Energy and Climate Action at 1-866-368-5044 and/or the [local community watershed group](#). The Department is working with a local community group, the Belfast and Area Watershed Grouping, to protect water quality in the Black Marsh watershed.

View how the Water Quality Score is calculated [here](#). View the data used for this calculation [here](#).

View or download the available raw water quality monitoring data PEI Department of Environment, Energy and Climate Action [here](#).

Return to the list of watersheds [here](#).

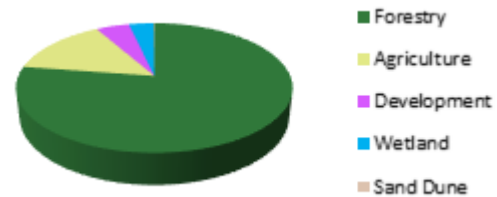
Black Pond Brook Map



Water Quality Score



Land Use



Watershed Area
21.59 km²

Status

The Black Pond Brook watershed has **Good** water quality. The measured watershed nitrate concentration is 0.8 mg/l, which is in the low range for PEI. This result covers about 86% of the watershed and is from stream sampling data collected by the Department of Environment, Energy and Climate Action (2008 - 2009). Anoxic events have never been reported in the small barrier beach pond and no fish kills have been recorded in the watershed. The Roseville / Miminegash Watersheds Inc. (RMWI) recently reported that siltation (red water) events occur infrequently in the watershed. The RMWI also reported that elevated water temperatures are an issue in the watershed.

Other Information

If you have any questions about water quality in this or any other watershed in P.E.I., please contact the provincial Department of Environment, Energy and Climate Action at 1-866-368-5044 and/or the [local community watershed group](#). The Department is working with a local community group, the Roseville/Miminegash Watersheds Inc., to protect water quality in the Black Pond Brook watershed.

View how the Water Quality Score is calculated [here](#). View the data used for this calculation [here](#).

View or download the available raw water quality monitoring data from the PEI Department of Environment, Energy and Climate Action [here](#).

Return to the list of watersheds [here](#).

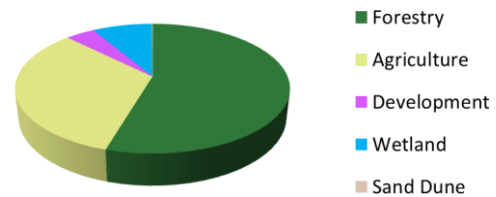
Boughton River Map



Water Quality Score



Land Use



Watershed Area
93.78 km²

Status

The Boughton River watershed has **Good** water quality. The measured watershed nitrate concentration is 0.5 mg N/l which is in the very low range for PEI. This result covers about 71% of the watershed and is from stream sampling data collected by the Department of Environment, Energy and Climate Action (2008-2010, 2016, 2019). Anoxic events have been reported in the Boughton River estuary 4 times in the last 5 years (2016-2018) but no fish kills related to run-off have been documented in the watershed. Sediment laden run-off (red water) events have recently been reported to occur infrequently by the Southeast Environmental Association (SEA). Some elevated water temperatures have been reported.

The watershed used for this assessment has been drawn to contain the drainage area of the entire Boughton River estuary. It has 5 subwatersheds which would have water quality in the Good (Boughton River, Narrows Creek, Greystone Creek) to Excellent (Morrison Pond, Poplar Point) categories if considered separately.

Other Information

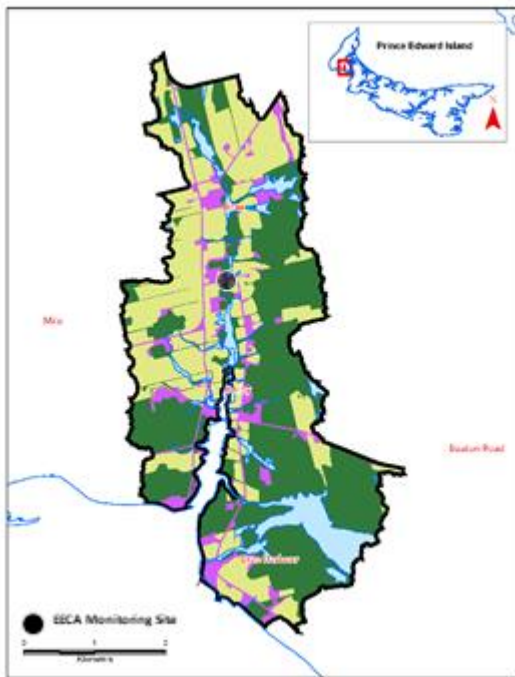
If you have any questions about water quality in this or any other watershed in P.E.I., please contact the provincial Department of Environment, Energy and Climate Action at 1-866-368-5044 and/or the [local community watershed group](#). The Department is working with a local community group, the Southeast Environmental Association, to address water quality issues in the Boughton River watershed.

View how the Water Quality Score is calculated [here](#). View the data used for this calculation [here](#).

View or download the available raw water quality monitoring data from the PEI Department of Environment, Energy and Climate Action [here](#).

Return to the list of watersheds [here](#).

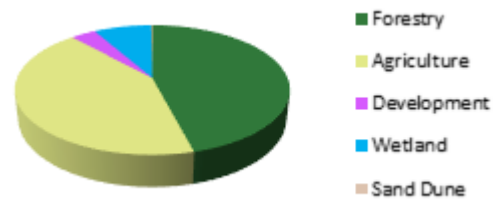
Brae River Map



Water Quality Score



Land Use



Watershed Area
17.68 km²

Status

The Brae River watershed has **Good** water quality. The measured watershed nitrate concentration is 4.1 mg N/l which is in the high range for PEI. This result covers about 31% of the watershed and is from stream sampling data collected by the Department of Environment, Energy and Climate Action (2009, 2014, 2017). No anoxic events have been ever been reported in the small estuary and no fish kills related to run-off have been documented in the watershed. Sediment laden run-off (red water) events have recently been reported to occur infrequently by Trout Unlimited, Prince County Chapter. The average groundwater nitrate concentration is > 3 mg/l.

Other Information

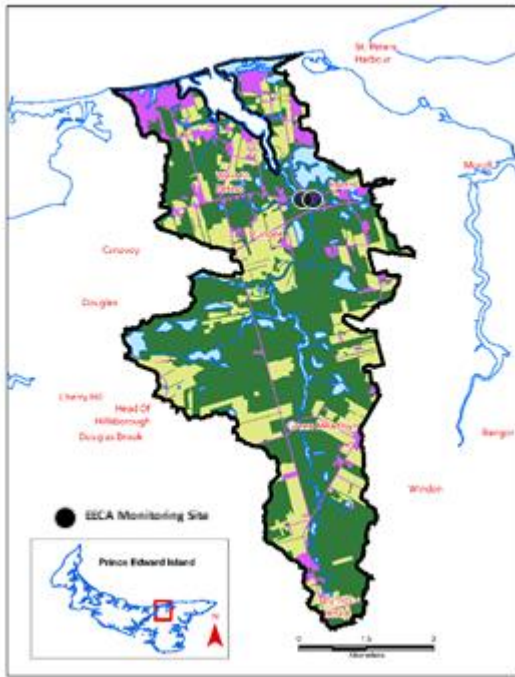
If you have any questions about water quality in this or any other watershed in P.E.I., please contact the provincial Department of Environment, Energy and Climate Action at 1-866-368-5044 and/or the [local community watershed group](#). The Department is working with a local community group, the Trout Unlimited Prince County Chapter, to address water quality issues in the Brae River watershed.

View how the Water Quality Score is calculated [here](#). View the data used for this calculation [here](#).

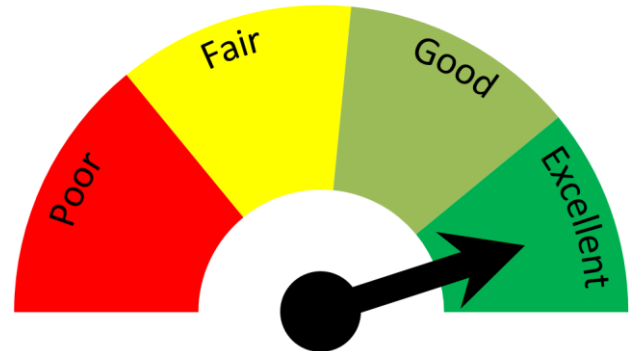
View or download the available raw water quality monitoring data from the PEI Department of Environment, Energy and Climate Action [here](#).

Return to the list of watersheds [here](#).

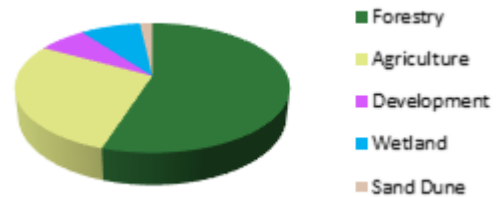
Bristol Creek Map



Water Quality Score



Land Use



Watershed Area
43.50 km²

Status

The Bristol Creek watershed has **Excellent** water quality. The measured watershed nitrate concentration is estimated to be < 0.2 mg N/l which is in the very low range for PEI. This result covers about 78% of the watershed and is from a very small amount of stream sampling data collected by the Department of Environment, Energy and Climate Action (2008). No anoxic events have been reported in St. Peter's Lake in the last 5 years (2015-2019) and no fish kills related to run-off have been documented in the watershed. Sediment laden run-off (red water) events were recently reported to occur infrequently by the Morell River Management Cooperative.

Other Information

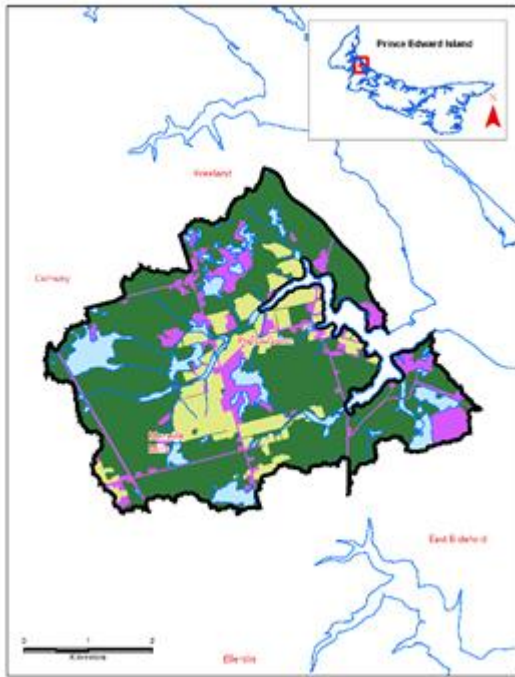
If you have any questions about water quality in this or any other watershed in P.E.I., please contact the provincial Department of Environment, Energy and Climate Action at 1-866-368-5044 and/or the [local community watershed group](#). The Department is working with a local community group, the Morell River Management Cooperative, to protect water quality in the Bristol Creek watershed.

View how the Water Quality Score is calculated [here](#). View the data used for this calculation [here](#).

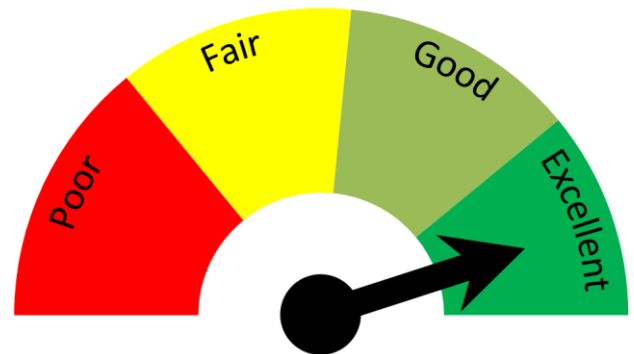
View or download the available raw water quality monitoring data PEI Department of Environment, Energy and Climate Action [here](#).

Return to the list of watersheds [here](#).

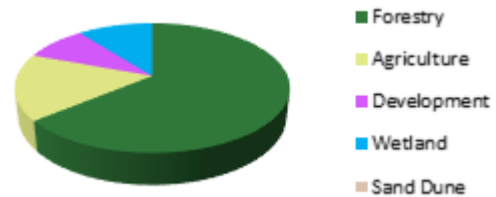
Brooks River Map



Water Quality Score



Land Use



Watershed Area
20.00 km²

Status

The Brooks River watershed has **Excellent** water quality. The modelled watershed nitrate concentration is 0.8 mg N/l which is in the low range for PEI. No anoxic events have been reported in the Brooks River estuary, and no fish kills related to run-off have been documented in the watershed. Sediment laden run-off (red water) events were recently reported to occur infrequently by the Lot 11 and Area Watershed Management Group Inc.

Other Information

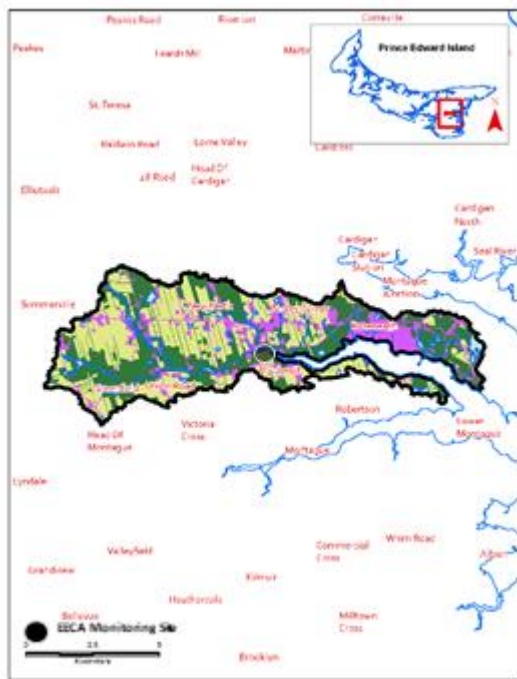
If you have any questions about water quality in this or any other watershed in P.E.I., please contact the provincial Department of Environment, Energy and Climate Action at 1-866-368-5044 and/or the [local community watershed group](#). The Department is working with a local community group, the Lot 11 and Area Watershed Management Group Inc., to protect water quality in the Brooks River watershed.

View how the Water Quality Score is calculated [here](#). View the data used for this calculation [here](#).

View or download the available raw water quality monitoring data PEI Department of Environment, Energy and Climate Action [here](#).

Return to the list of watersheds [here](#).

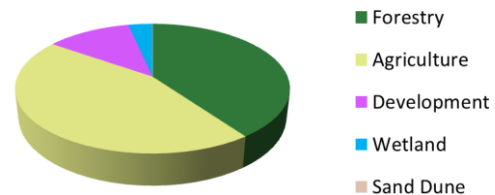
Brudenell River Map



Water Quality Score



Land Use



Watershed Area
55.81 km²

Status

The Brudenell River watershed has **Good** water quality. The measured watershed nitrate concentration is 2.0 mg N/l which is in the moderate range for PEI. This result covers about 64% of the watershed and is from stream sampling data collected by the Department of Environment, Energy and Climate Action (2012-2013, 2016). Anoxia has not been reported in the Brudenell River estuary in the last 5 years (2015-2019) and no fish kills related to run-off have been documented in the watershed. The Southeast Environmental Association recently reported that sedimentation (red water) events occur infrequently in the watershed. The average groundwater nitrate concentration in the watershed is >3 mg N/l.

Other Information

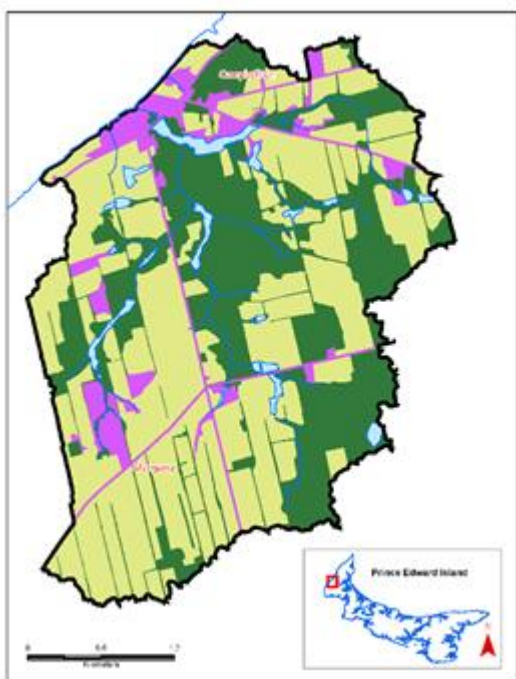
If you have any questions about water quality in this or any other watershed in P.E.I., please contact the provincial Department of Environment, Energy and Climate Action at 1-866-368-5044 and/or the [local community watershed group](#). The Department is working with a local community group, the Southeast Environmental Association, to address water quality issues in the Brudenell River watershed.

View how the Water Quality Score is calculated [here](#). View the data used for this calculation [here](#).

View or download the available raw water quality monitoring data from the PEI Department of Environment, Energy and Climate Action [here](#).

Return to the list of watersheds [here](#).

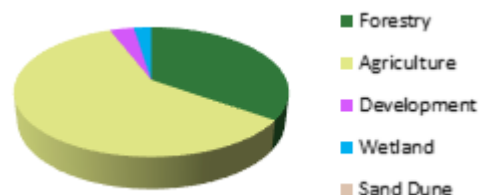
Cambellton Map



Water Quality Score



Land Use



Watershed Area
11.20 km²

Status

The Campbellton watershed has **Fair** water quality. The modelled watershed nitrate concentration is 3.5 mg N/l which is in the high range for PEI. The Campbellton watershed does not have an estuary, so estuarine anoxic events are not a factor. A fish kill related to run-off occurred in 2017. Sediment laden run-off (red water) events were recently reported to occur very frequently by the Roseville/Miminegash Watersheds Inc. (RMWI). The RMWI also reports a lack of riparian cover in the watershed as an issue.

Other Information

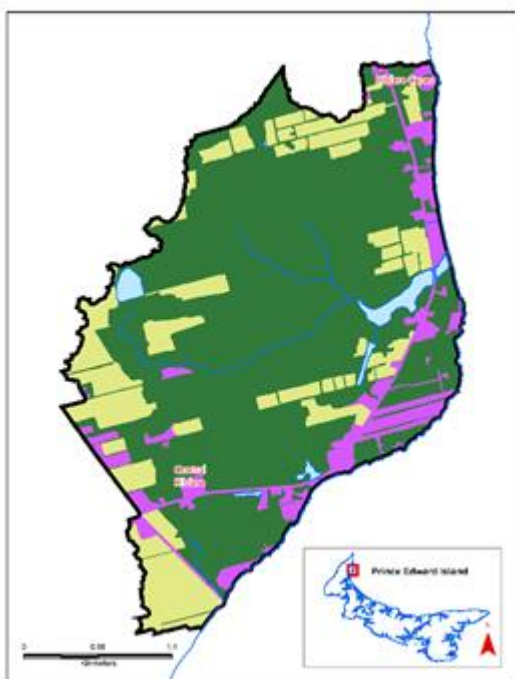
If you have any questions about water quality in this or any other watershed in P.E.I., please contact the provincial Department of Environment, Energy and Climate Action at 1-866-368-5044 and/or the [local community watershed group](#). The Department is working with a local community group, the Roseville/Miminegash Watersheds Inc., to address water quality issues in the Campbellton watershed.

View how the Water Quality Score is calculated [here](#). View the data used for this calculation [here](#).

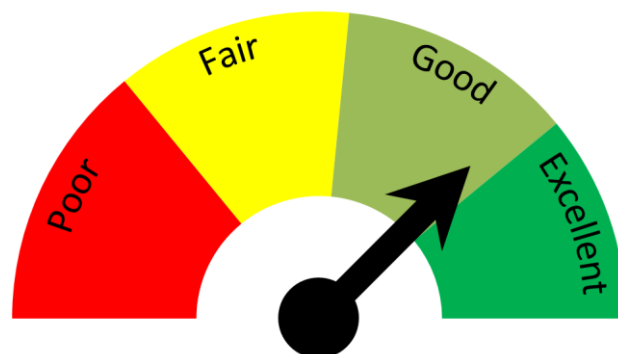
View or download the available raw water quality monitoring data PEI Department of Environment, Energy and Climate Action [here](#).

Return to the list of watersheds [here](#).

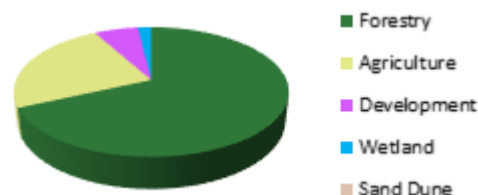
Cape Kildare Map



Water Quality Score



Land Use



Watershed Area
7.87 km²

Status

The Cape Kildare watershed has **Good** water quality. The modelled watershed nitrate concentration is 1.5 mg N/l which is in the low/moderate range for PEI. The Cape Kildare watershed does not have an estuary, so estuarine anoxic events are not a factor. No fish kills related to run-off have been documented in the watershed. Sediment laden run-off (red water) events were recently reported to occur infrequently by the Tignish and Area Watershed Management Group Inc.

Other Information

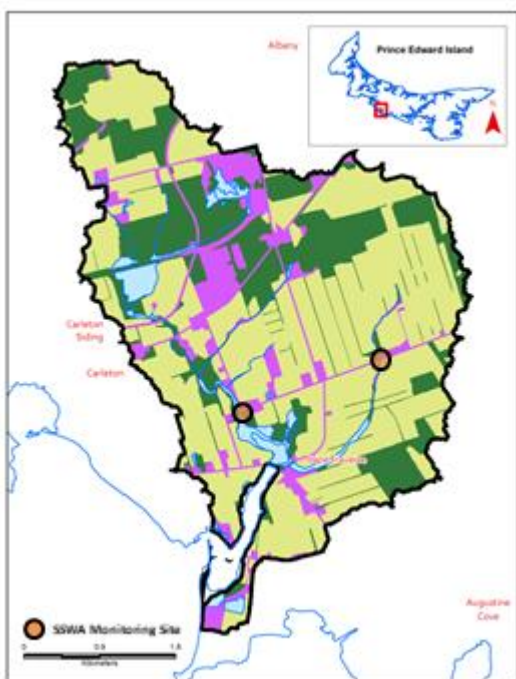
If you have any questions about water quality in this or any other watershed in P.E.I., please contact the provincial Department of Environment, Energy and Climate Action at 1-866-368-5044 and/or the [local community watershed group](#). The Department is working with a local community group, the Tignish and Area Watershed Management Group Inc., to protect water quality in the Cape Kildare watershed.

View how the Water Quality Score is calculated [here](#). View the data used for this calculation [here](#).

View or download the available raw water quality monitoring data from the PEI Department of Environment, Energy and Climate Action [here](#).

Return to the list of watersheds [here](#).

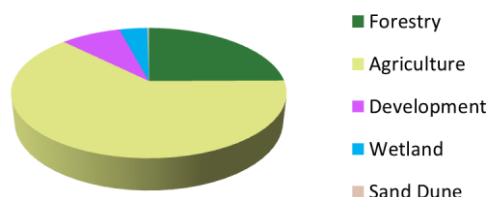
Cape Traverse River Map



Water Quality Score



Land Use



Watershed Area
18.33 km²

Status

The Cape Traverse River watershed has **Fair** water quality. The measured nitrate concentration is 4.0 mg N/l, which is in the high range for PEI. This result covers about 66% of the watershed and comes from stream sampling data collected by the South Shore Watershed Association Inc. (SSWA)(2016-2018). Anoxic events have never been reported in the Cape Traverse River estuary and no fish kills related to run-off have been documented in the watershed. The SSWA recently reported that sediment laden run-off (red water) events occur very frequently in the watershed. A freshwater pond located near the head of tide had an anoxic event in 2009. The average groundwater nitrate concentration in the watershed is > 3 mg N/l.

Other Information

If you have any questions about water quality in this or any other watershed in P.E.I., please contact the provincial Department of Environment, Energy and Climate Action at 1-866-368-5044 and/or the [local community watershed group](#). The Department is working with a local community group, the South Shore Watershed Association, to address water quality issues in the Cape Traverse River watershed.

View how the Water Quality Score is calculated [here](#). View the data used for this calculation [here](#).

View or download the available raw water quality monitoring data from the PEI Department of Environment, Energy and Climate Action [here](#).

Return to the list of watersheds [here](#).

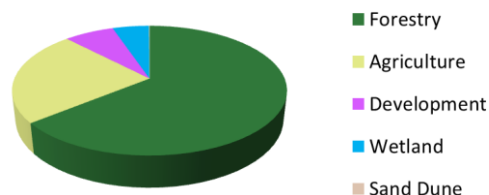
Cardigan River Map



Water Quality Score



Land Use



Watershed Area
82.74 km²

Status

The Cardigan River watershed has **Good** water quality. The measured watershed nitrate concentration is 0.7 mg N/l which is in the low range for PEI. This result covers about 57% of the watershed and comes from stream sampling data collected by the Department of Environment, Energy and Climate Action (2005-2009, 2012-2013, 2016, 2019). A single anoxic event was reported in the Cardigan River estuary (2017), but no fish kills related to run-off have been documented in the watershed. The Southeast Environmental Association (SEA) recently reported that sediment laden run-off (red water) events occur frequently in the watershed. Local residents report that effluents from a fish hatchery are a concern for water quality and stream habitat in the Cardigan River.

The watershed used for this assessment has been drawn to contain the drainage area of the entire Cardigan River estuary. It has 4 subwatersheds which would have water quality in the Good (Cardigan River) to Excellent (Byrnes Creek, Mitchell River, Seal River) categories if considered separately.

Other Information

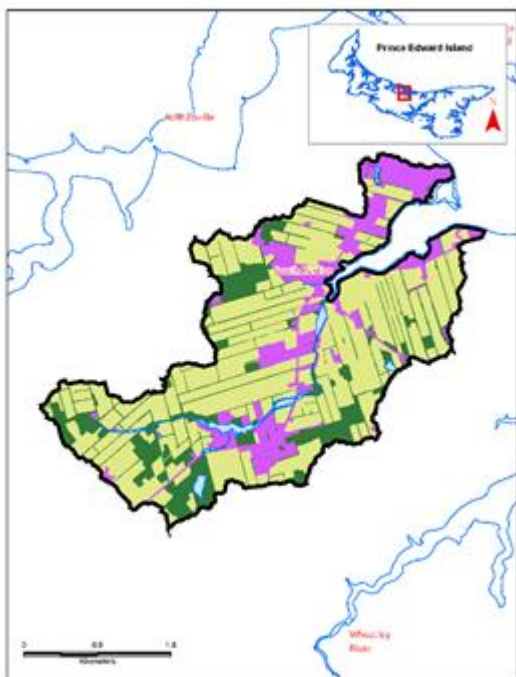
If you have any questions about water quality in this or any other watershed in P.E.I., please contact the provincial Department of Environment, Energy and Climate Action at 1-866-368-5044 and/or the [local community watershed group](#). The Department is working with a local community group, the Southeast Environmental Association, to protect water quality in the Cardigan River watershed.

View how the Water Quality Score is calculated [here](#). View the data used for this calculation [here](#).

View or download the available raw water quality monitoring data from the PEI Department of Environment, Energy and Climate Action [here](#).

Return to the list of watersheds [here](#).

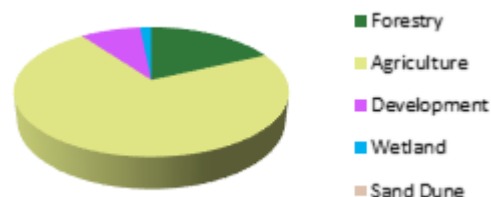
Chapel Creek Map



Water Quality Score



Land Use



Watershed Area
11.41 km²

Status

The Chapel Creek watershed has **Good** water quality. The modelled watershed nitrate concentration is 3.0 mg N/l which is in the low-moderate range for PEI. No anoxic events were documented in the Chapel Creek estuary between 2015 and 2019, however some discolorations and odors have been reported. No fish kills related to run-off have been documented in the watershed. Sediment laden run-off (red water) were recently reported to occur infrequently by the Wheatley River Improvement Group Inc. The average groundwater nitrate concentration is > 3 mg/l.

Other Information

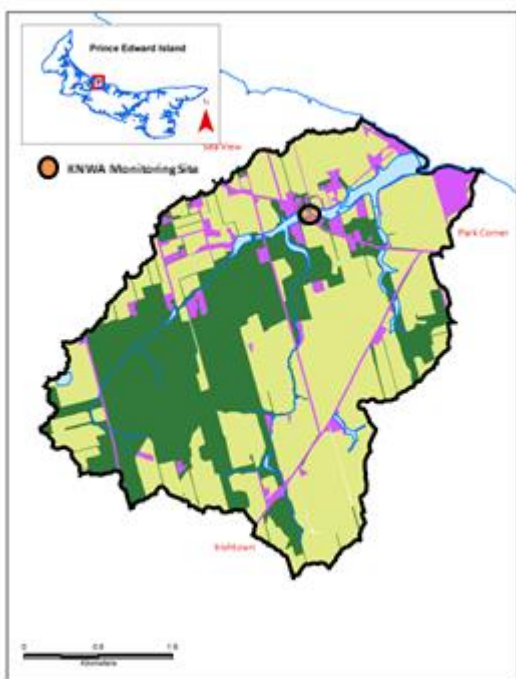
If you have any questions about water quality in this or any other watershed in P.E.I., please contact the provincial Department of Environment, Energy and Climate Action at 1-866-368-5044 and/or the [local community watershed group](#). The Department is working with a local community group, the Wheatley River Improvement Group Inc., to address water quality issues in the Chapel Creek watershed.

View how the Water Quality Score is calculated [here](#). View the data used for this calculation [here](#).

View or download the available raw water quality monitoring data PEI Department of Environment, Energy and Climate Action [here](#).

Return to the list of watersheds [here](#).

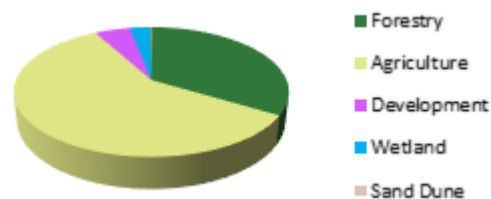
Cousins Pond Map



Water Quality Score



Land Use



Watershed Area
13.80 km²

Status

The Cousins Pond watershed has **Good** water quality. The measured watershed nitrate concentration is 2.6 mg N/l which is in the moderate range for PEI. This result covers about 72% of the watershed and is from stream sampling data collected by the Kensington North Watersheds Association Ltd. (KNWA) (2012-2013). No anoxic events have been ever been reported in the barrier beach pond and no fish kills related to run-off have been documented in the watershed. Sediment laden run-off (red water) events were recently reported to occur frequently in the watershed by the KNWA. The average groundwater nitrate concentration is > 3 mg/l.

Other Information

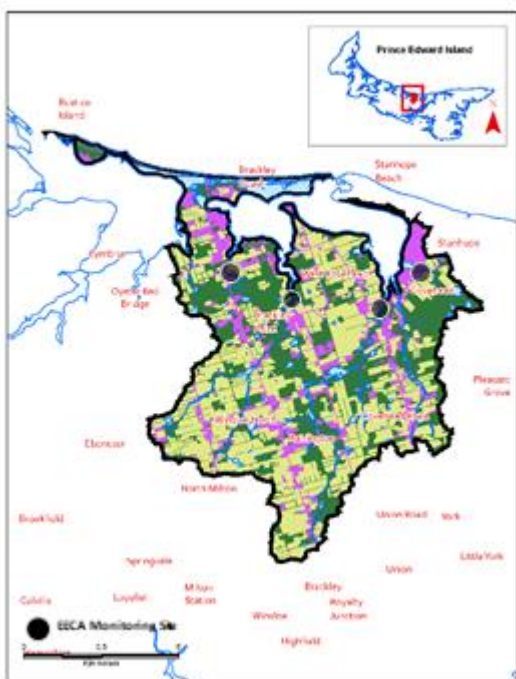
If you have any questions about water quality in this or any other watershed in P.E.I., please contact the provincial Department of Environment, Energy and Climate Action at 1-866-368-5044 and/or the [local community watershed group](#). The Department is working with a local community group, the Kensington North watersheds Association Ltd., to address water quality issues in the Cousins Pond watershed.

View how the Water Quality Score is calculated [here](#). View the data used for this calculation [here](#).

View or download the available raw water quality monitoring data from the PEI Department of Environment, Energy and Climate Action [here](#).

Return to the list of watersheds [here](#).

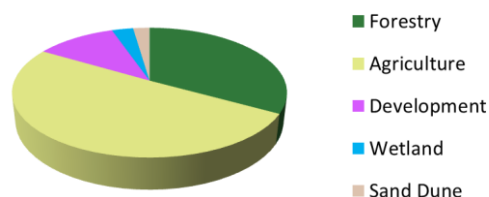
Covehead Bay /Brackley Bay Map



Water Quality Score



Land Use



Watershed Area
78.34 km²

Status

The Covehead/Brackley Bay watershed has **Fair** water quality. The measured watershed nitrate concentration is 2.6 mg N/l which is in the moderate range for PEI. This result covers about 70% of the watershed and is from stream sampling data collected by the Department of Environment, Energy and Climate Action (2006 -2009, 2009-2010, 2013, 2015, 2018). Anoxic events have been reported in Covehead Bay in 4 of the last 5 years (2016-2019) and in 3 of those years (2017-2019) in Brackley Bay. No fish kills related to run-off have been documented in the watershed. Recent expert opinion is that sediment-laden run-off (red water) events occur very frequently in the watershed. The Friends of Covehead and Brackley Bays Inc. have also recorded elevated water temperatures in freshwater ponds located near the head of tide.

The watershed used for this assessment has been drawn to contain the drainage area of the entire Covehead Bay / Brackley Bay system. It has 3 subwatersheds (Bells Creek, Black River, McCallum Creek) which would all have water quality in the Fair category if considered separately.

Other Information

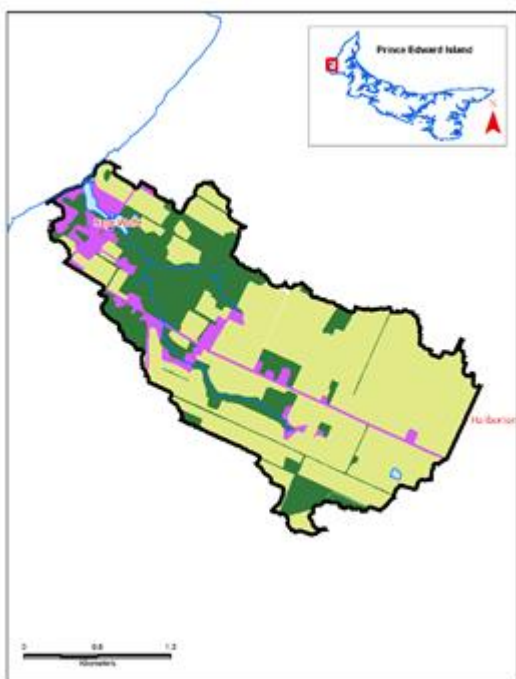
If you have any questions about water quality in this or any other watershed in P.E.I., please contact the provincial Department of Environment, Energy and Climate Action at 1-866-368-5044 and/or [the local community watershed group](#). The Department is working with a local community group, the Friends of Covehead and Brackley Bays Inc., to address water quality issues in the Covehead Bay/Brackley Bay watershed.

View how the Water Quality Score is calculated [here](#). View the data used for this calculation [here](#).

View or download the available raw water quality monitoring data from the PEI Department of Environment, Energy and Climate Action [here](#).

Return to the list of watersheds [here](#).

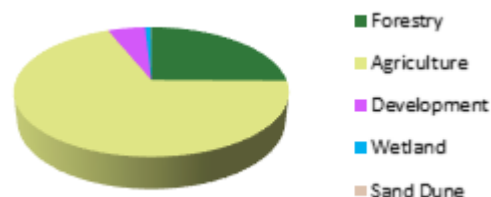
Crossmans Brook Map



Water Quality Score



Land Use



Watershed Area
5.09 km²

Status

The Crossmans Brook watershed has Fair water quality. The modelled watershed nitrate concentration is 6.0 mg N/l which is in the very high range for PEI. The watershed does not have an estuary, so estuarine anoxic events are not a factor. No fish kills related to run-off have ever been documented in the watershed. The West Point and Area Watersheds Association recently reported that sediment laden run-off (red water) events occur infrequently in the watershed. The average groundwater nitrate concentration is > 5 mg/l.

Other Information

If you have any questions about water quality in this or any other watershed in P.E.I., please contact the provincial Department of Environment, Energy and Climate Action at 1-866-368-5044 and/or the [local community watershed group](#). The Department is working with a local community group, the West Point and Area Watersheds Inc., to address water quality issues in the Crossmans Brook watershed.

View how the Water Quality Score is calculated [here](#). View the data used for this calculation [here](#).

View or download the available raw water quality monitoring data from the PEI Department of Environment, Energy and Climate Action [here](#).

Return to the list of watersheds [here](#).

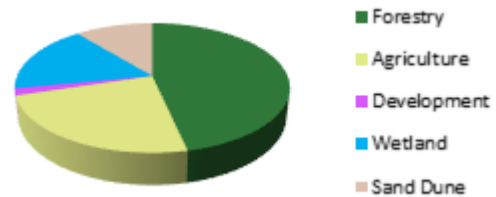
Deroche Pond Map



Water Quality Score



Land Use



Watershed Area
28.08 km²

Status

The Deroche Pond watershed has **Good** water quality. The measured watershed nitrate concentration is < 1.5 mg N/l which is in the low range for PEI. This result is from a small amount of sampling carried out by the Winter River/Tracadie Bay Watershed Association Inc. (WRTBWA) (2016, 2017) and represents about 61% of the watershed. Occasional late-spring anoxia is reported to be an issue in the large barrier beach pond by a provincial biologist. No fish kills related to run-off have been documented in the watershed. The WRTBWA recently reported that sediment laden run-off (red water) events occur infrequently. Some elevated temperatures were recorded by the watershed group in one stream.

Other Information

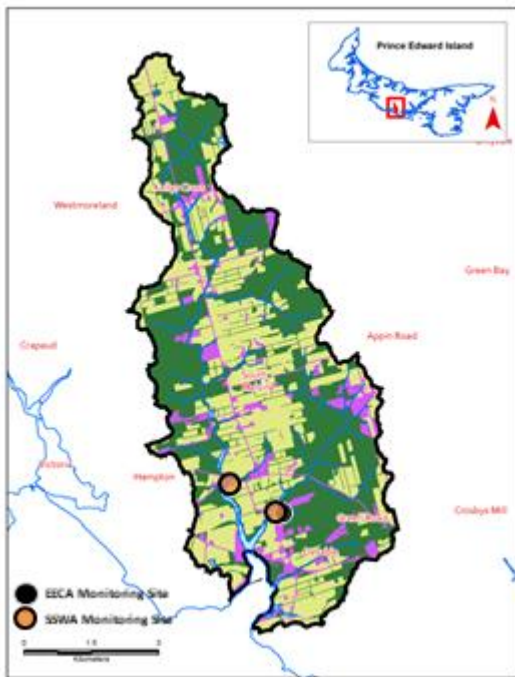
If you have any questions about water quality in this or any other watershed in P.E.I., please contact the provincial Department of Environment, Energy and Climate Action at 1-866-368-5044 and/or the [local community watershed group](#). The Department is working with a local community group, the Winter River/Tracadie Bay Watershed Association Inc., to protect water quality in the Deroche Pond watershed.

View how the Water Quality Score is calculated [here](#). View the data used for this calculation [here](#).

View or download the available raw water quality monitoring data PEI Department of Environment, Energy and Climate Action [here](#).

Return to the list of watersheds [here](#).

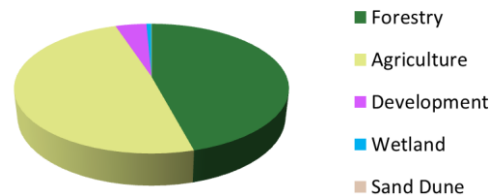
Desable River Map



Water Quality Score



Land Use



Watershed Area
41.78 km²

Status

The Desable River watershed has **Good** water quality. The measured watershed nitrate concentration is 1.4 mg N/l which is in the low range for PEI. This result covers about 79% of the watershed and is from stream sampling data collected by the Department of Environment, Energy and Climate Action (2013, 2015, 2018) and the South Shore Watershed Association (SSWA) (2015, 2017). Anoxic events have never been documented in the Desable River estuary however there have been reports of odors in the estuary associated with decaying sea lettuce. No fish kills related to run-off have been documented in the watershed in the last 10 years (2010-2019). The SSWA recently reported that sediment-laden run off (red water) events occur frequently in the watershed.

Other Information

If you have any questions about water quality in this or any other watershed in P.E.I., please contact the provincial Department of Environment, Energy and Climate Action at 1-866-368-5044 and/or [the local community watershed group](#). The Department is working with a local community group, the South Shore Watershed Association, to address water quality issues in the Desable River watershed.

View how the Water Quality Score is calculated [here](#). View the data used for this calculation [here](#).

View or download the available raw water quality monitoring data from the PEI Department of Environment, Energy and Climate Action [here](#).

Return to the list of watersheds [here](#).

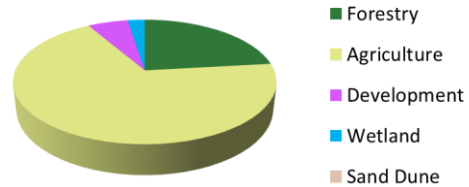
Dunk River Map



Water Quality Score



Land Use



Watershed Area
214.15 km²

Status

The Dunk River watershed has **Fair** water quality. The measured watershed nitrate concentration is about 5.0 mg N/l which is in the high range for PEI. This result covers 78% of the watershed and is from stream sampling data collected by the Bedeque Bay Environmental Management Association (BBEMA) (2016-2018). Anoxia was recorded in the Dunk River estuary in 2018 but no fish kills related run-off were reported between 2010 and 2019. Recent expert opinion is that sediment laden run-off (red water) events occur very frequently in the watershed. The average groundwater nitrate concentration in the watershed is above 5 mg N/l. Some elevated water temperatures have been recorded by the BBEMA in streams and ponds in the watershed. The watershed used for this assessment has been drawn to contain the drainage area of the entire Dunk River estuary. It has 2 subwatersheds (Bradshaw River, Dunk River) which would both have water quality in the Fair category if considered separately.

Other Information

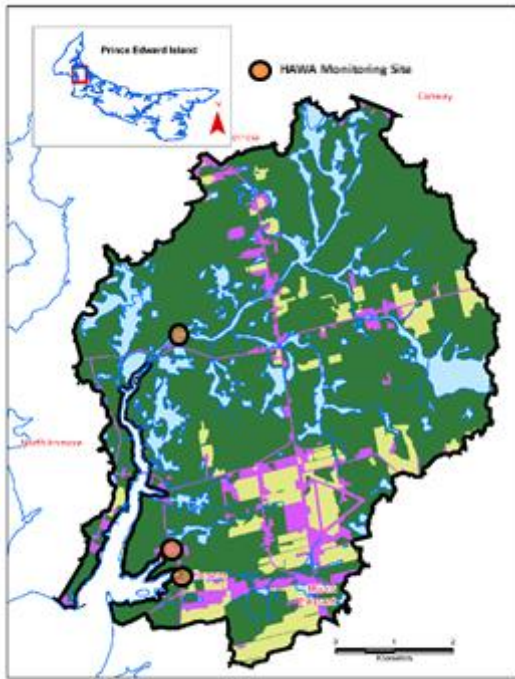
If you have any questions about water quality in this or any other watershed in P.E.I., please contact the provincial Department of Environment, Energy and Climate Action at 1-866-368-5044 and/or the [local community watershed group](#). The Department is working with a local community group, the Bedeque Bay Environmental Management Association, to address water quality issues in the Dunk River watershed.

View how the Water Quality Score is calculated [here](#). View the data used for this calculation [here](#).

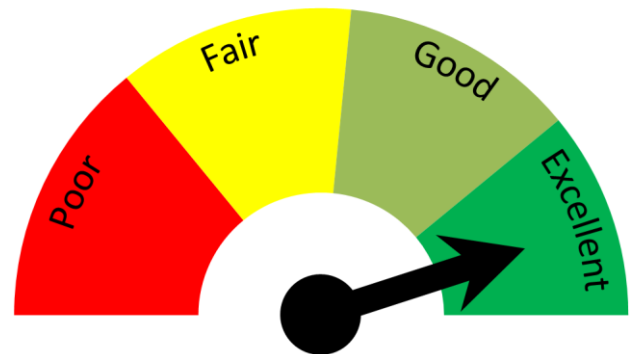
View or download the available raw water quality monitoring data from the PEI Department of Environment, Energy and Climate Action [here](#).

Return to the list of watersheds [here](#).

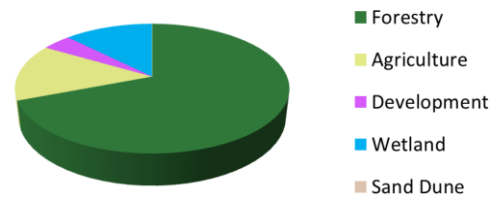
Enmore River Map



Water Quality Score



Land Use



Watershed Area
45.89 km²

Status

The Enmore River watershed has **Excellent** water quality. The measured nitrate concentrations from streams in the watershed is < 0.2 mg N/l (3 samples 2012, 2013, 2016) from 2 streams (60% of the watershed) and 1.7- 3.7 mg N/l (4 samples 2008-2009, 2016, 2015) from 1 stream (10% of the watershed). Overall this would result in a watershed nitrate concentration in the low range for PEI. These results are from data collected by the Harmony and Area Watershed Enhancement Group (HAWAEG). Anoxic events have never been reported in the Enmore River estuary and no fish kills related to run-off have been documented in the watershed. Sediment laden run-off (red water) events were recently reported to occur infrequently by HAWAEG.

Other Information

If you have any questions about water quality in this or any other watershed in P.E.I., please contact the provincial Department of Environment, Energy and Climate Action at 1-866-368-5044 and/or the [local community watershed group](#). The Department is working with a local community group, the Harmony and Area Watershed Enhancement Group, to protect water quality in the Enmore River watershed.

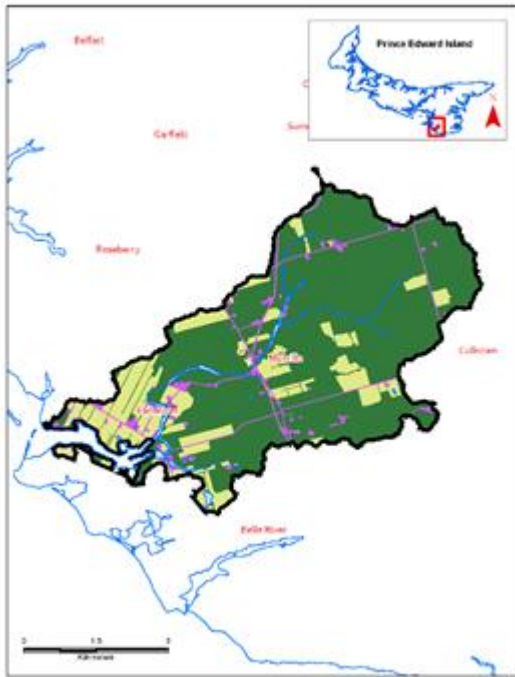
View how the Water Quality Score is calculated [here](#). View the data used for this calculation [here](#).

View or download the available raw water quality monitoring data from the PEI Department of Environment, Energy and Climate Action [here](#).

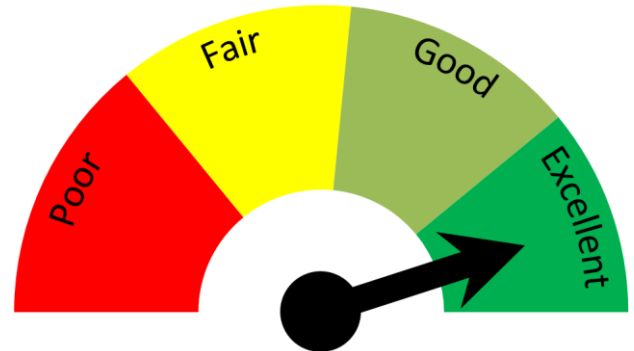
Return to the list of watersheds [here](#).

Flat River

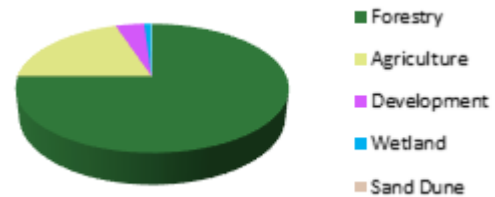
Map



Water Quality Score



Land Use



Watershed Area
30.34 km²

Status

The Flat River watershed has **Excellent** water quality. The modelled watershed nitrate concentration is about 1.0 mg N/l which is in the low range for PEI. Anoxic events have not been reported in the estuary. No fish kills related to run-off have ever been documented in the watershed and sediment laden run-off (red water) events were recently reported to occur infrequently by the Belfast and Area Watershed Grouping.

Other Information

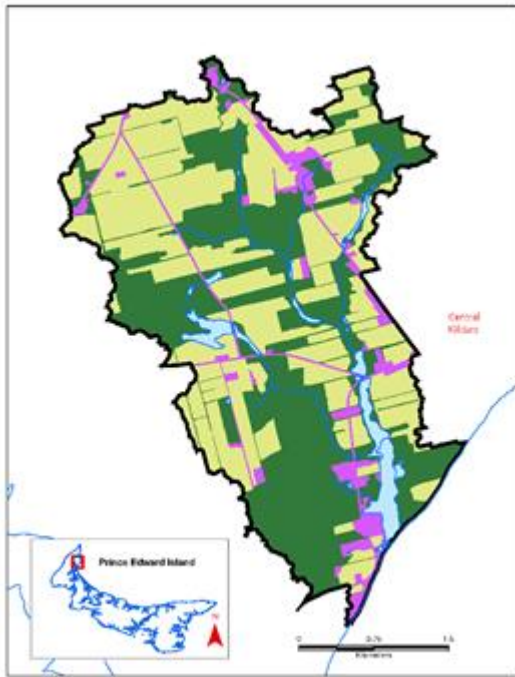
If you have any questions about water quality in this or any other watershed in P.E.I., please contact the provincial Department of Environment, Energy and Climate Action at 1-866-368-5044 and/or the [local community watershed group](#). The Department is working with a local community group, the Belfast and Area Watershed Grouping, to protect water quality issues in the Flat River watershed.

View how the Water Quality Score is calculated [here](#). View the data used for this calculation [here](#).

View or download the available raw water quality monitoring data from the PEI Department of Environment, Energy and Climate Action [here](#).

Return to the list of watersheds [here](#).

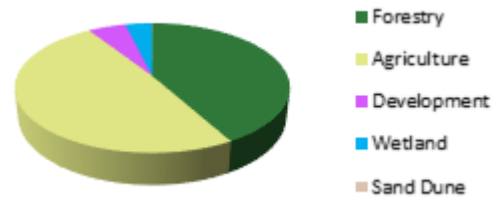
Foleys Pond Map



Water Quality Score



Land Use



Watershed Area
12.46 km²

Status

The Foleys Pond watershed has **Good** water quality. The modelled watershed nitrate concentration is 4.1 mg N/l which is in the high range for PEI. Anoxic events have not been reported in the small barrier beach pond and no fish kills related to run-off have been documented in the watershed. Sediment laden run-off (red water) events were recently reported to occur frequently by the Tignish and Area Watershed Group. The average groundwater nitrate concentration is > 3 mg/l.

Other Information

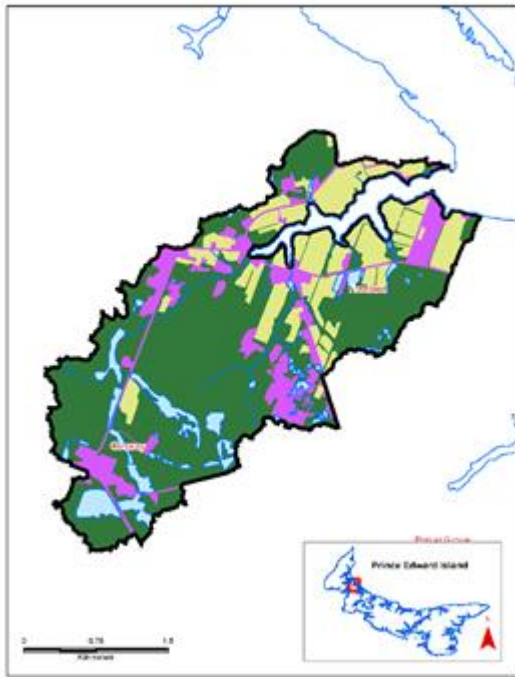
If you have any questions about water quality in this or any other watershed in P.E.I., please contact the provincial Department of Environment, Energy and Climate Action at 1-866-368-5044 and/or the [local community watershed group](#). The Department is working with a local community group, the Tignish and Area Watershed Management Group Inc., to address water quality issues in the Foley's Pond watershed.

View how the Water Quality Score is calculated [here](#). View the data used for this calculation [here](#).

View or download the available raw water quality monitoring data from the PEI Department of Environment, Energy and Climate Action [here](#).

Return to the list of watersheds [here](#).

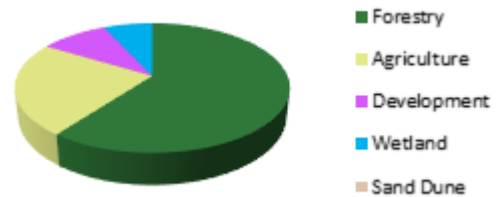
Freeland Creek Map



Water Quality Score



Land Use



Watershed Area
9.50 km²

Status

The Freeland Creek watershed has **Good** water quality. The modelled watershed nitrate concentration is 1.5 mg N/l which is in the low-moderate range for PEI. Anoxic events have not been reported in the Freeland Creek estuary and no fish kills related to run-off have been documented in the watershed. Sediment laden run-off (red water) events were recently reported to occur infrequently by the Lot 11 and Area Watershed Management Group Inc. The average groundwater nitrate concentration is > 3 mg/l.

Other Information

If you have any questions about water quality in this or any other watershed in P.E.I., please contact the provincial Department of Environment, Energy and Climate Action at 1-866-368-5044 and/or the [local community watershed group](#). The Department is working with a local community group, the Lot 11 and Area Watershed Management Group Inc., to protect water quality in the Freeland Creek watershed.

View how the Water Quality Score is calculated [here](#). View the data used for this calculation [here](#).

View or download the available raw water quality monitoring data PEI Department of Environment, Energy and Climate Action [here](#).

Return to the list of watersheds [here](#).

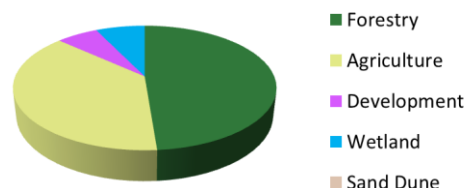
Grand River Map



Water Quality Score



Land Use



Watershed Area
130.10 km²

Status

The Grand River watershed has **Good** water quality. The measured watershed nitrate concentration is 0.8 mg N/l which is in the low range for PEI. This result covers 47% of the watershed and it is from stream sampling data collected by the Department of Environment, Energy and Climate Action (2008-2010, 2012-2014, 2017). No anoxic events were recorded in tributaries of the Grand River estuary in the last 5 years (2015-2019) and no fish kills related to run-off have been documented in the watershed. Recent expert opinion is that sediment laden run-off (red water) events occur frequently in the watershed. The average groundwater nitrate is > 3 mg/l for the Grand River.

The watershed used for this assessment has been drawn to contain the drainage area of the entire Grand River estuary. It has 4 subwatersheds which would have water quality in the Good (Shipyard Creek, Little Trout River, Nebraska Creek) to Excellent (Grand River) categories if considered separately.

Other Information

If you have any questions about water quality in this or any other watershed in P.E.I., please contact the provincial Department of Environment, Energy and Climate Action at 1-866-368-5044 and/or the [local community watershed group](#). The Department is working with a local community group, the Richmond Bay Watershed Association Inc., to protect water quality in the Grand River watershed.

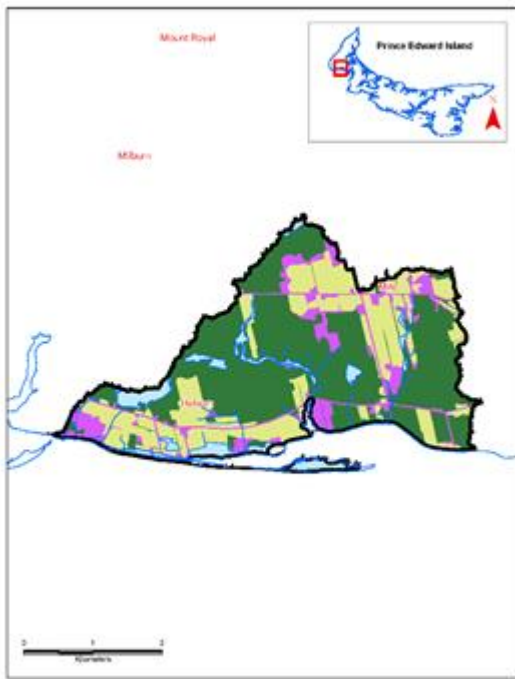
View how the Water Quality Score is calculated [here](#). View the data used for this calculation [here](#).

View or download the available raw water quality monitoring data PEI Department of Environment, Energy and Climate Action [here](#).

Return to the list of watersheds [here](#).

Hebron

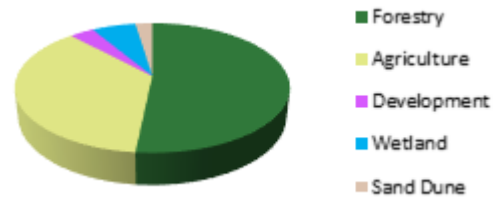
Map



Water Quality Score



Land Use



Watershed Area
12.37 km²

Status

The Hebron watershed has **Good** water quality. The modelled watershed nitrate concentration is 2.4 mg N/l which is in the moderate range for PEI. The Hebron has a small estuary which has not reported an anoxic event. No fish kills related to run-off have been documented in the Hebron watershed. Trout Unlimited, Prince County Branch has recently reported that sediment laden run-off (red water) events occur infrequently in the watershed.

Other Information

If you have any questions about water quality in this or any other watershed in P.E.I., please contact the provincial Department of Environment, Energy and Climate Action at 1-866-368-5044 and/or the [local community watershed group](#). The Department is working with a local community group, Trout Unlimited, Prince County Chapter, to protect water quality issue in the Hebron watershed.

View how the Water Quality Score is calculated [here](#). View the data used for this calculation [here](#).

View or download the available raw water quality monitoring data from the PEI Department of Environment, Energy and Climate Action [here](#).

Return to the list of watersheds [here](#).

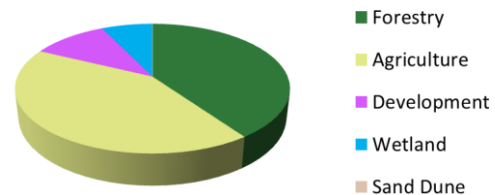
Hillsborough River Map



Water Quality Score



Land Use



Watershed Area
347.79 km²

Status

The Hillsborough River watershed has **Good** water quality. The measured watershed nitrate concentration is 0.54 mg N/l which is in the low range for PEI. This result covers 57% of the watershed and it is from stream sampling data collected by the Department Environment, Energy and Climate Action (2005-2007, 2008-2009, 2012-2013, 2016) and the Stratford and Area Watershed Improvement Group (2018). Anoxic events have never been recorded in the Hillsborough River estuary and no fish kills have been recorded in the watershed in the last 10 years (2010-2019). Sediment laden run-off (red water) events were recently reported to occur frequently to very frequently by the Hillsborough Area Watershed Co-operative and infrequently or very frequently by the Stratford and Area Watershed Improvement Group indicating differences between sub watersheds. Other concerns include anoxic events and elevated water temperatures in some small freshwater ponds in the watershed. The average groundwater nitrate concentration in the watershed is above 3 mg N/l.

The watershed used for this assessment has been drawn to contain the drainage area of the entire Hillsborough River estuary. It has 17 subwatersheds which would have water quality in the Good (Charlottetown, Wrights Creek, Hornes Creek, Appletree Creek, Millers Creek, Scotchfort, Hillsborough River, Pisquid River, Clarks Brook, Cheese Factory Creek, Fullertons Creek, Rosebank) to Excellent (Riverside, Scotts Creek, Black Brook, Glenfinnan River, Johnstons River) categories if considered separately.

Other Information

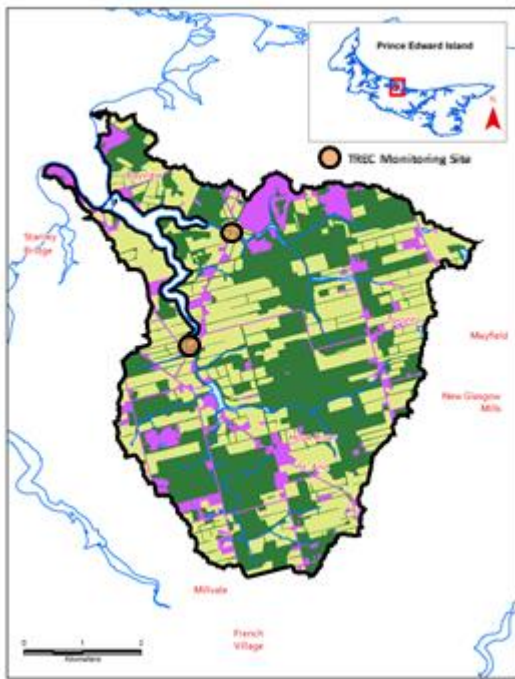
If you have any questions about water quality in this or any other watershed in P.E.I., please contact the provincial Department of Environment, Energy and Climate Action at 1-866-368-5044 and/or [the local community watershed group](#). The Department is working with two local community groups, the Hillsborough Area Watershed Co-operative and the Straford and Area Watershed Improvement Group, to address water quality issues in the Hillsborough River watershed.

View how the Water Quality Score is calculated [here](#). View the data used for this calculation [here](#).

View or download the available raw water quality monitoring data from the PEI Department of Environment, Energy and Climate Action [here](#).

Return to the list of watersheds [here](#).

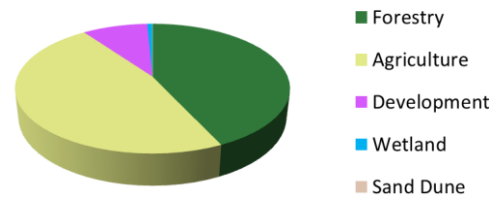
Hope River Map



Water Quality Score



Land Use



Watershed Area
31.41 km²

Status

The Hope River watershed has **Good** water quality. The measured watershed nitrate concentration is 1.9 mg N/l which is in the moderate range for PEI. This result covers 77% of the watershed and it is from stream sampling data collected by the Trout River Environmental Committee Inc. (2016, 2017, 2019). Anoxic events were recorded in 3 (2016-2018) of the last 5 years. No fish kills related to run-off have been recorded in the watershed. Sediment laden run-off events were recently reported to occur infrequently by the Trout River Environmental Committee.

The watershed used for this assessment has been drawn to contain the drainage area of the entire Hope River estuary. It has 2 subwatersheds (Bayview River, Hope River) which would both have water quality in the Good category if considered separately.

Other Information

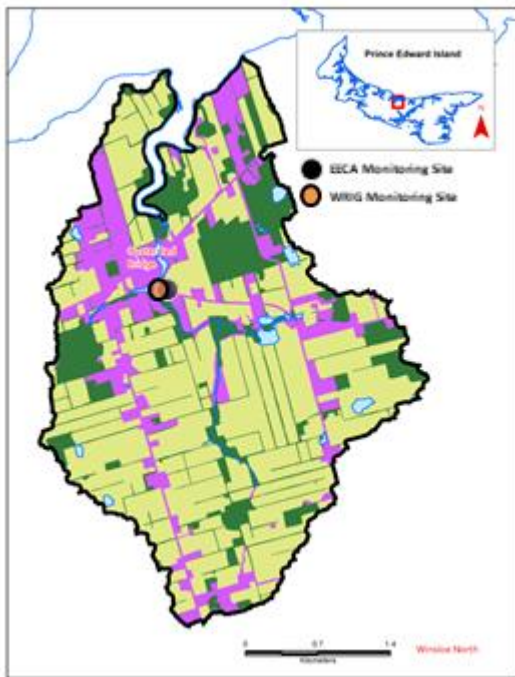
If you have any questions about water quality in this or any other watershed in P.E.I., please contact the provincial Department of Environment, Energy and Climate Action at 1-866-368-5044 and/or the [local community watershed group](#). The Department is working with a local community group, the Trout River Environmental Committee Inc., to address water quality issues in the Hillsborough River watershed.

View how the Water Quality Score is calculated [here](#). View the data used for this calculation [here](#).

View or download the available raw water quality monitoring data from the PEI Department of Environment, Energy and Climate Action [here](#).

Return to the list of watersheds [here](#).

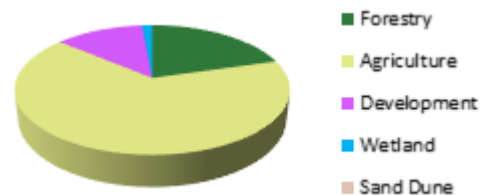
Hornes Creek Map



Water Quality Score



Land Use



Watershed Area
11.92 km²

Status

The Hornes Creek watershed has **Good** water quality. The measured watershed nitrate concentration is 4.7 mg N/l which is in the high range for PEI. This result covers 60% of the watershed and it is from stream sampling data collected by the Department of Environment, Energy and Climate Action (2014) and the Wheatley River Improvement Group Inc. (2017-2018). Anoxic events have never been reported in the estuary and no fish kills related to run-off have been recorded in the watershed. Sediment laden run-off events were reported to occur infrequently by WRIG.

Other Information

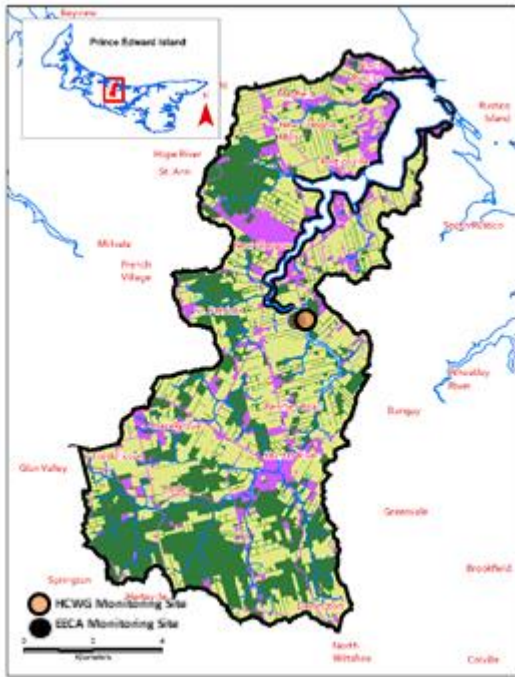
If you have any questions about water quality in this or any other watershed in P.E.I., please contact the provincial Department of Environment, Energy and Climate Action at 1-866-368-5044 and/or the [local community watershed group](#). The Department is working with a local community group, the Wheatley River Improvement Group Inc., to address water quality issues in the Horne's Creek watershed.

View how the Water Quality Score is calculated [here](#). View the data used for this calculation [here](#).

View or download the available raw water quality monitoring data from the PEI Department of Environment, Energy and Climate Action [here](#).

Return to the list of watersheds [here](#).

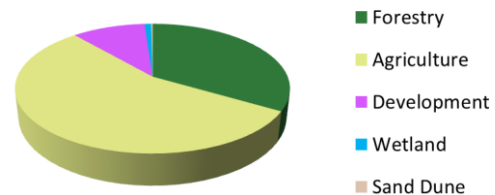
Hunter / Clyde River Map



Water Quality Score



Land Use



Watershed Area
89.53 km²

Status

The Hunter River/River Clyde watershed has **Fair** water quality. The measured watershed concentration is 1.2 mg N/l which is in the low range for PEI. This result covers 57% of the watershed and it is from stream sampling data collected by the Department Environment, Energy and Climate Action (2015, 2018) and the Hunter Clyde Watershed Group (HCWG) (2019). Anoxic events have been recorded in the Hunter River/River Clyde estuary in 4 of the last 5 years (2015-2018) but no fish kills related to run-off have been recorded in the watershed. Sediment laden run-off (red water) events were recently reported occur infrequently by HCWG. Other reported issues include a lack of riparian cover and that average groundwater nitrate concentration is above 3 mg/l.

Other Information

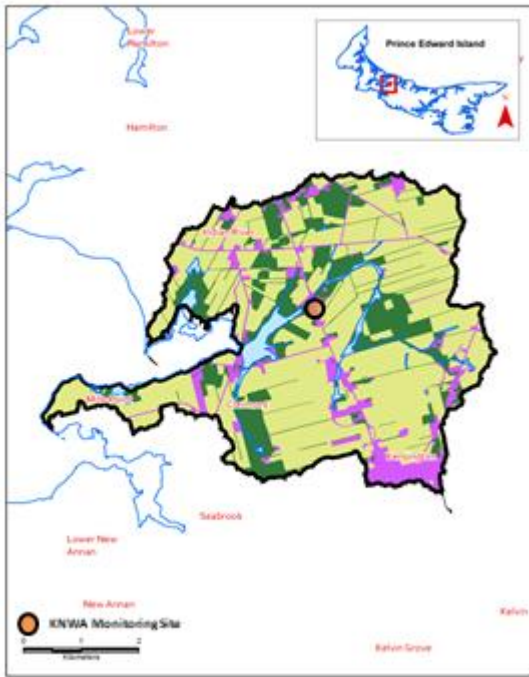
If you have any questions about water quality in this or any other watershed in P.E.I., please contact the provincial Department of Environment, Energy and Climate Action at 1-866-368-5044 and/or the [local community watershed group](#). The Department is working with a local community group, the Hunter Clyde Watershed Group Inc., to address water quality issues in the Hunter/Clyde River watershed.

View how the Water Quality Score is calculated [here](#). View the data used for this calculation [here](#).

View or download the available raw water quality monitoring data from the PEI Department of Environment, Energy and Climate Action [here](#).

Return to the list of watersheds [here](#).

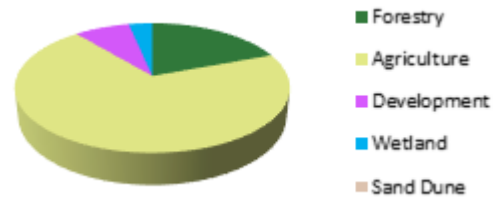
Indian River Map



Water Quality Score



Land Use



Watershed Area
24.60 km²

Status

The Indian River watershed has **Fair** water quality. The measured watershed concentration is 6.2 mg N/l which is in the very high range for PEI. This result covers 54% of the watershed and it is from stream sampling data collected by the Kensington North Watersheds Association Ltd. (KNWA) (2012-2013, 2019). Anoxic events have been recorded in the estuary in 2 (2016, 2018) of the last 5 years. No fish kills related to run-off have been recorded in the watershed in the last 10 years (2010-2019). Sediment laden run-off (red water) events were recently reported to occur infrequently in the watershed by the KNWA. The average groundwater nitrate concentration is above 3 mg/l.

Other Information

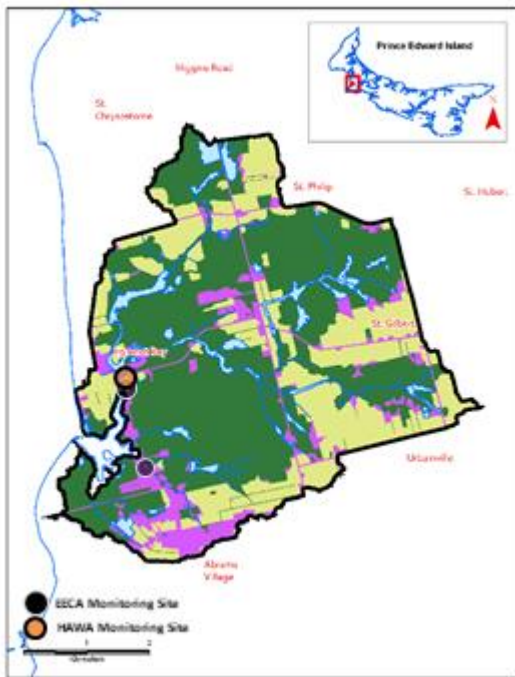
If you have any questions about water quality in this or any other watershed in P.E.I., please contact the provincial Department of Environment, Energy and Climate Action at 1-866-368-5044 and/or the [local community watershed group](#). The Department is working with a local community group, the Kensington North Watersheds Association Ltd. , to address water quality issues in the Indian River watershed.

View how the Water Quality Score is calculated [here](#). View the data used for this calculation [here](#).

View or download the available raw water quality monitoring data from the PEI Department of Environment, Energy and Climate Action [here](#).

Return to the list of watersheds [here](#).

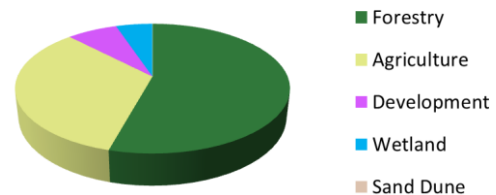
Jacques River Map



Water Quality Score



Land Use



Watershed Area
27.6 km²

Status

The Jacques River watershed has **Good** water quality. The measured watershed nitrate concentration is 0.4 mg N/l which is in the very low range for PEI. This result covers about 83% of the watershed and is from data collected by the by the Department Environment, Energy and Climate Action (2008 – 2009) and the Harmony and Area Watersheds Enhancement Group Inc. (HAWEG) (2010- 2014, 2017). Anoxic events have never been reported in the Jacques River estuary and no fish kills related to run-off have been documented in the watershed. Sediment laden run-off (red water) events were recently reported to occur infrequently by HAWEG. The average groundwater nitrate concentration in the watershed is above 3 mg N/l.

Other Information

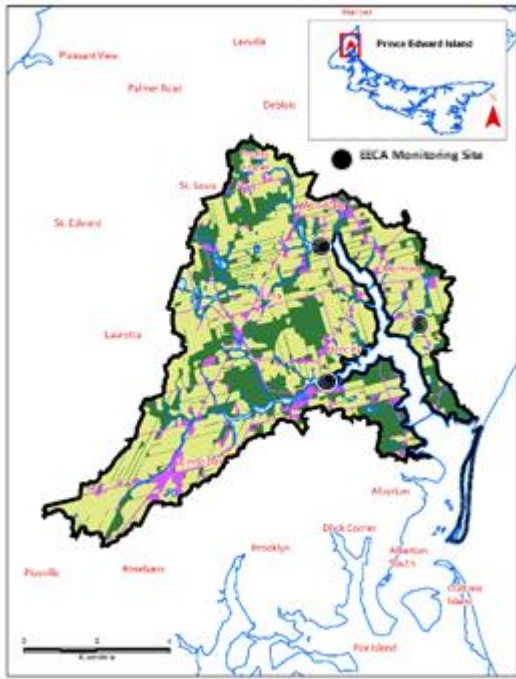
If you have any questions about water quality in this or any other watershed in P.E.I., please contact the provincial Department of Environment, Energy and Climate Action at 1-866-368-5044 and/or [the local community watershed group](#). The Department is working with a local community group, the Harmony and Area Watershed Enhancement Group Inc., to protect water quality in the Jacques River watershed.

View how the Water Quality Score is calculated [here](#). View the data used for this calculation [here](#).

View or download the available raw water quality monitoring data from the PEI Department of Environment, Energy and Climate Action [here](#).

Return to the list of watersheds [here](#).

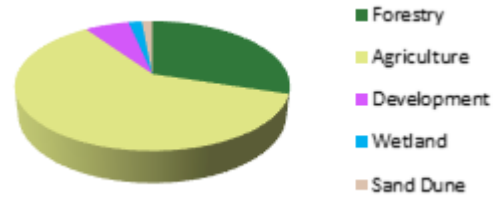
Kildare / Montrose River Map



Water Quality Score



Land Use



Watershed Area
56.38 km2

Status

The Kildare/Montrose watershed has **Poor** water quality. The measured watershed nitrate concentration is 4.4 mg N/l which is in the high range for PEI. This result covers about 67% of the watershed and is from stream sampling data collected by the Department of Environment, Energy and Climate Action (2010, 2012-2014, 2017). Anoxic events have been recorded in the Kildare/Montrose River estuary in 4 (2014, 2016-2018) of the last 5 years and there have been 2 run-off related fish kills (2010, 2017) in the watershed in the last 10 years. Sediment laden run-off (red water) events were recently reported to occur very frequently by the Cascumpec Bay Watershed Association Inc. Another concern is high summertime temperatures in a freshwater pond located at the head of tide. The average groundwater nitrate concentration in the watershed is above 3 mg N/l.

The watershed used for this assessment has been drawn to contain the drainage area of the entire Kildare / Montrose River estuary. It has 2 subwatersheds which would have water quality in the Poor (Kildare River) to Fair (Huntley River) categories if considered separately.

Other Information

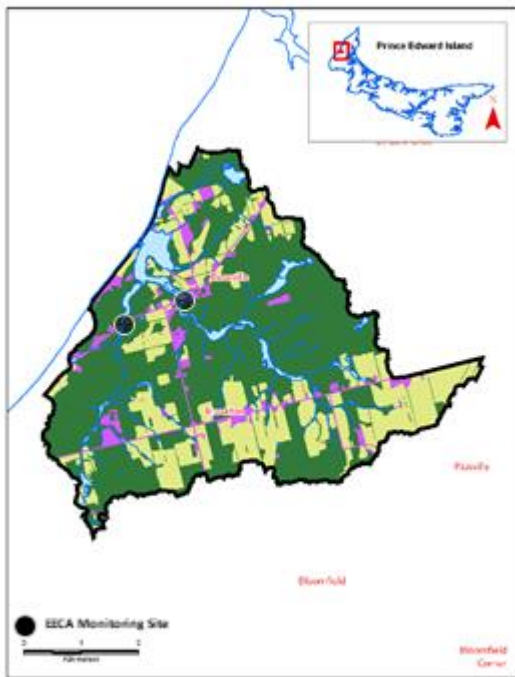
If you have any questions about water quality in this or any other watershed in P.E.I., please contact the provincial Department of Environment, Energy and Climate Action at 1-866-368-5044 and/or the [local community watershed group](#). The Department is working with a local community group, the Cascumpec Bay Watershed Association Inc., to address water quality issues in the Kildare River/Montrose River watershed.

View how the Water Quality Score is calculated [here](#). View the data used for this calculation [here](#).

View or download the available raw water quality monitoring data from the PEI Department of Environment, Energy and Climate Action [here](#).

Return to the list of watersheds [here](#).

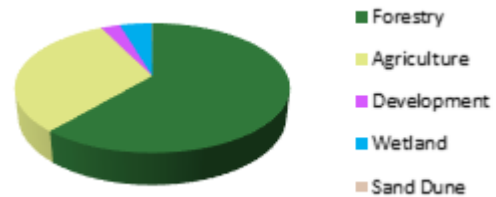
Little Miminegash River Map



Water Quality Score



Land Use



Watershed Area
26.64 km²

Status

The Little Miminegash River watershed has **Fair** water quality. The measured watershed nitrate concentration is about 2.0 mg N/l which is in the moderate range for PEI. This result covers 78% of the watershed and is from stream sampling data collected by the Department of Environment, Energy and Climate Action (2008-2009). Anoxic events have not been confirmed in the large barrier beach pond. A fish kill related to run-off occurred in 2016. Sediment laden run-off events were recently reported to be very frequent by the Roseville / Miminegash Watersheds Inc. Other reported issues include a lack of riparian cover and elevated water temperatures.

Other Information

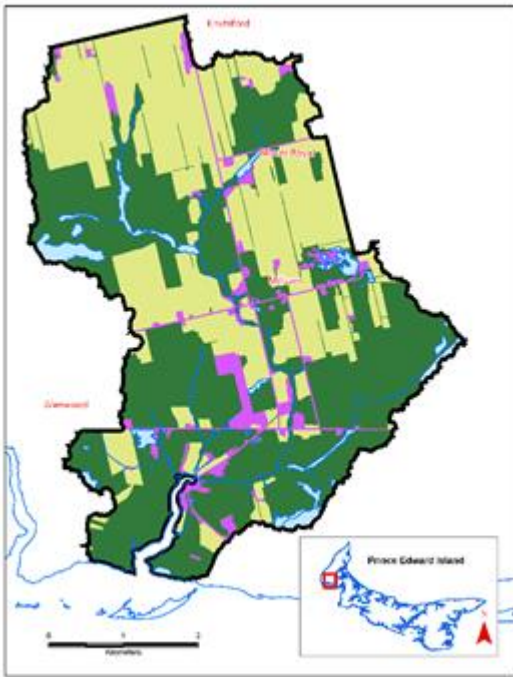
If you have any questions about water quality in this or any other watershed in P.E.I., please contact the provincial Department of Environment, Energy and Climate Action at 1-866-368-5044 and/or the [local community watershed group](#). The Department is working with a local community group, the Roseville / Miminegash Watersheds Inc. , to address water quality issues in the Little Miminegash River watershed.

View how the Water Quality Score is calculated [here](#). View the data used for this calculation [here](#).

View or download the available raw water quality monitoring data from the PEI Department of Environment, Energy and Climate Action [here](#).

Return to the list of watersheds [here](#).

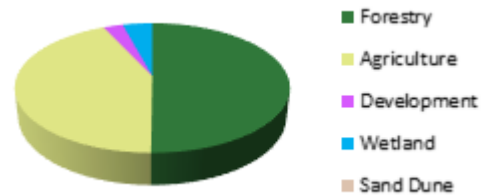
Little Pierre Jacques River Map



Water Quality Score



Land Use



Watershed Area
26.75 km²

Status

The Little Pierre Jacques River watershed has **Good** water quality. The modelled watershed nitrate concentration is 3.4 mg N/l which is in the high range for PEI. Anoxic events have not been reported in the small estuary and no fish kills related to run-off have been documented in the Little Pierre Jacques watershed. Sediment laden run-off (red water) events were recently reported to occur frequently in the watershed by the West Point and Area Watersheds Inc. The watershed average groundwater nitrate concentration is above 3 mg/l.

Other Information

If you have any questions about water quality in this or any other watershed in P.E.I., please contact the provincial Department of Environment, Energy and Climate Action at 1-866-368-5044 and/or the [local community watershed group](#). The Department is working with a local community group, the West Point and Area Watersheds Inc. , to address water quality issues in the Little Pierre Jacques River watershed.

View how the Water Quality Score is calculated [here](#). View the data used for this calculation [here](#).

View or download the available raw water quality monitoring data PEI Department of Environment, Energy and Climate Action [here](#).

Return to the list of watersheds [here](#).

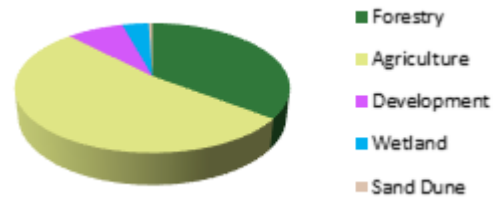
Little Tignish River Map



Water Quality Score



Land Use



Watershed Area
22.07 km²

Status

The Little Tignish River watershed has **Good** water quality. The measured watershed nitrate concentration is 2.0 mg N/l which is in the moderate range for PEI. This result covers 60% of the watershed and it is from stream sampling data collected by the Department of Environment, Energy and Climate Action (2008-2009). Anoxic events have not been reported in the large barrier beach pond and no fish kills related to run-off have been recorded in the watershed. Sediment laden run-off events were recently reported to occur frequently by the Tignish and Area Watershed Management Group Inc. A blue-green algae (cyanobacteria) bloom occurred in Doyle's Pond in 2015. The average groundwater nitrate concentration is > 3 mg/l.

Other Information

If you have any questions about water quality in this or any other watershed in P.E.I., please contact the provincial Department of Environment, Energy and Climate Action at 1-866-368-5044 and/or the [local community watershed group](#). The Department is working with a local community group, the Tignish and Area Watershed Management Group Inc., to address water quality issues in the Little Tignish River watershed.

View how the Water Quality Score is calculated [here](#). View the data used for this calculation [here](#).

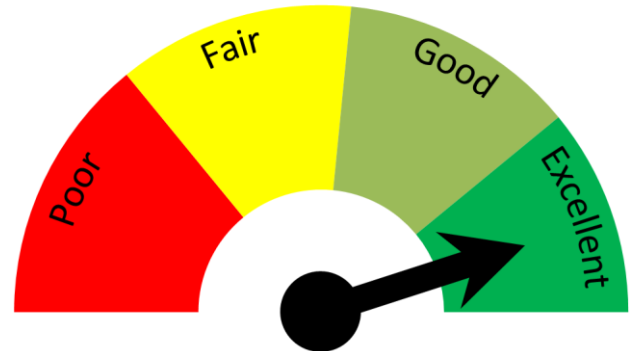
View or download the available raw water quality monitoring data PEI Department of Environment, Energy and Climate Action [here](#).

Return to the list of watersheds [here](#).

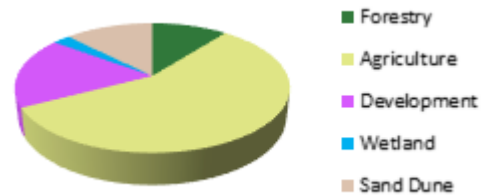
Lukes Creek Map



Water Quality Score



Land Use



Watershed Area
2.77 km²

Status

The Lukes Creek watershed has **Excellent** water quality. The measured watershed nitrate concentration is 0.9 mg N/l which is in the low range for PEI. This result covers 57% of the watershed and it is from stream sampling data collected by the Wheatley River Improvement Group Inc. (WRIG) (2018). Anoxic events have not been reported in the Luke's Creek estuary and no fish kills related to run-off have been recorded in the watershed. Sediment laden run-off were recently reported to occur infrequently by WRIG.

Other Information

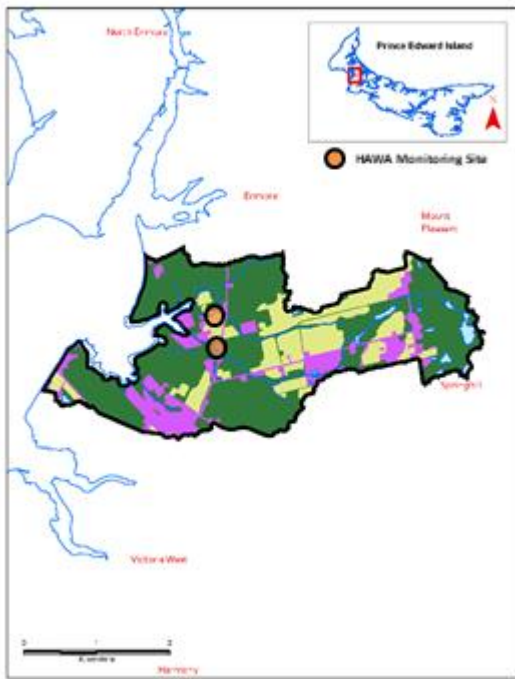
If you have any questions about water quality in this or any other watershed in P.E.I., please contact the provincial Department of Environment, Energy and Climate Action at 1-866-368-5044 and/or the [local community watershed group](#). The Department is working with a local community group, the Wheatley River Improvement Group Inc., to protect water quality in the Lukes Creek watershed.

View how the Water Quality Score is calculated [here](#). View the data used for this calculation [here](#).

View or download the available raw water quality monitoring data from the PEI Department of Environment, Energy and Climate Action [here](#).

Return to the list of watersheds [here](#).

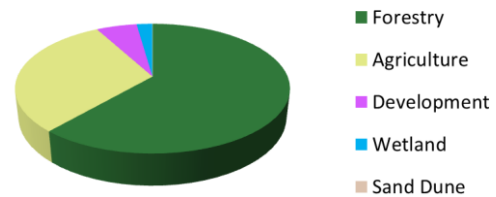
MacLaurins Creek Map



Water Quality Score



Land Use



Watershed Area
9.09 km²

Status

The MacLaurins Creek watershed has **Good** water quality. The measured watershed nitrate concentrations from streams in the watershed are 0.9 – 1.9 mg N/l (5 samples 2010-2012, 2016-2017) from one stream (34% of the watershed) and 4.7 – 7.3 mg N/l (3 samples 2009, 2010, 2012) from another stream (16% of the watershed). Overall this would result in a watershed nitrate concentration in the moderate range for PEI. These results are from stream sampling data collected by the Harmony and Area Watershed Enhancement Group Inc. (HAWEG). Anoxic events have never been reported in the MacLaurin's Creek estuary and no fish kills related to run-off have ever been documented in the watershed. Sediment laden run-off (red water) events were recently reported to occur infrequently by HAWEG.

Other Information

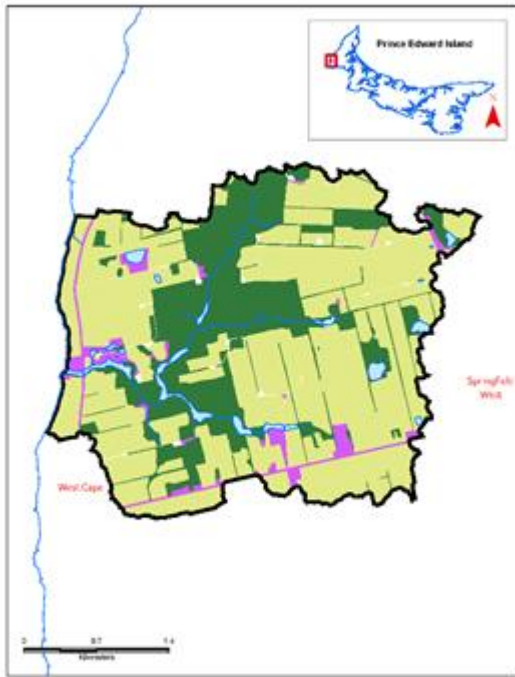
If you have any questions about water quality in this or any other watershed in P.E.I., please contact the provincial Department of Environment, Energy and Climate Action at 1-866-368-5044 and/or the [local community watershed group](#). The Department is working with a local community group, the Harmony and Area Watersheds Enhancement Group Inc, to protect water quality in the MacLaurin's Creek watershed.

View how the Water Quality Score is calculated [here](#). View the data used for this calculation [here](#).

View or download the available raw water quality monitoring data PEI Department of Environment, Energy and Climate Action [here](#).

Return to the list of watersheds [here](#).

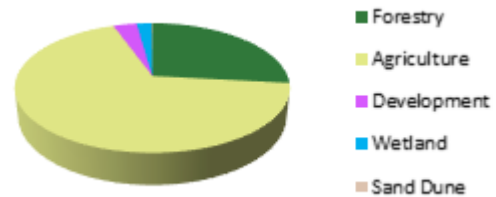
MacWilliams Brook Map



Water Quality Score



Land Use



Watershed Area
10.47 km²

Status

The MacWilliams Brook watershed has **Fair** water quality. The modelled watershed nitrate concentration is 4.8 mg N/l which is in the high range for PEI. MacWilliams Brook does not have an estuary so estuarine anoxia is not an issue. No fish kills related to run-off have been documented in the watershed. Sediment laden run-off (red water) events were recently reported to occur infrequently by the West Point and Area Watersheds Inc. The average groundwater nitrate concentration is above 5 mg/l.

Other Information

If you have any questions about water quality in this or any other watershed in P.E.I., please contact the provincial Department of Environment, Energy and Climate Action at 1-866-368-5044 and/or the [local community watershed group](#). The Department is working with a local community group, the West Point and Area Watersheds Inc., to address water quality issues in the MacWilliams Brook watershed.

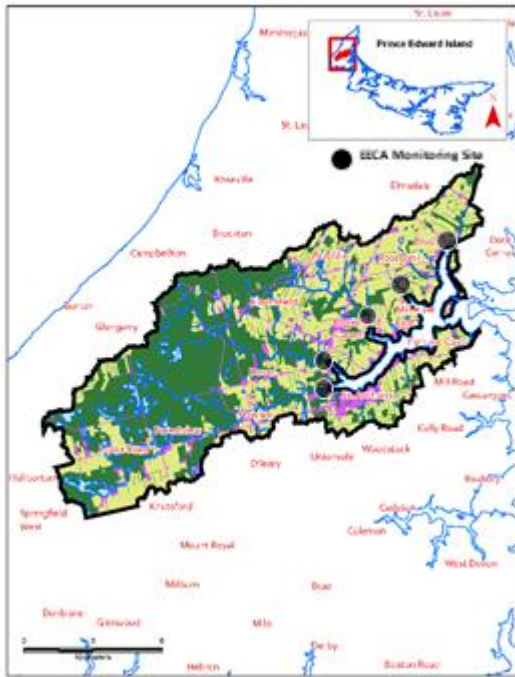
View how the Water Quality Score is calculated [here](#). View the data used for this calculation [here](#).

View or download the available raw water quality monitoring data from the PEI Department of Environment, Energy and Climate Action [here](#).

Return to the list of watersheds [here](#).

Mill River

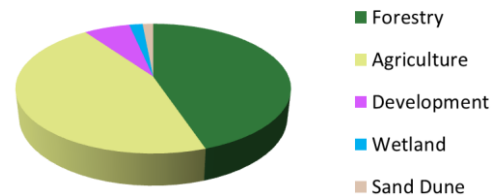
Map



Water Quality Score



Land Use



Watershed Area

134.45 km²

Status

The Mill River watershed has **Poor** water quality. The measured watershed nitrate concentration is 3.0 mg N/l which is the moderate to high range for PEI. This result covers about 76% of the watershed and is from stream sampling data collected by the Department of Environment, Energy and Climate Action (2009, 2013-2014, 2017-2019). Anoxic events have been reported in the Mill River estuary and/or its tributaries in each of the last 5 years (2015-2019). Two fish kills related to run-off have been documented in the watershed in the last 10 years (2011, 2013). Sediment laden run-off (red water) events have recently been reported to occur either frequently or very frequently in sub-watersheds by Trout Unlimited Prince County Chapter and the Cascumpec Bay Watershed Association. The average groundwater nitrate concentration in the watershed is above 3 mg N/l. Elevated water temperatures have also been reported to exist in streams in the watershed.

The watershed used for this assessment has been drawn to contain the drainage area of the entire Mill River estuary. It has 2 subwatersheds which would have water quality in the Poor (Mill River) to Fair (Hills River) category if considered separately.

Other Information

If you have any questions about water quality in this or any other watershed in P.E.I., please contact the provincial Department of Environment, Energy and Climate Action at 1-866-368-5044 and/or the [local community watershed group](#). The Department is working with two local community groups, the

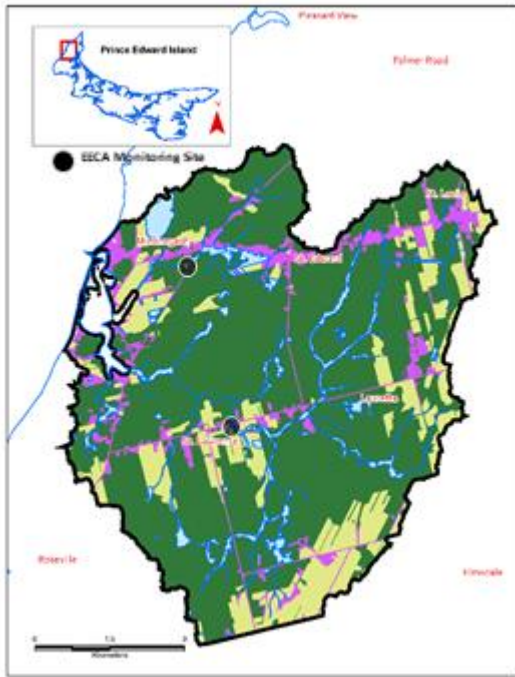
Cascumpec Bay Watershed Association Inc. and Trout Unlimited-Prince County Chapter, to address water quality issues in the Mill River watershed.

View how the Water Quality Score is calculated [here](#). View the data used for this calculation [here](#).

View or download the available raw water quality monitoring data PEI Department of Environment, Energy and Climate Action [here](#).

Return to the list of watersheds [here](#).

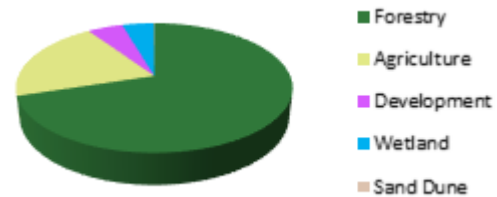
Miminegash River Map



Water Quality Score



Land Use



Watershed Area
58.36 km²

Status

The Miminegash River watershed has **Good** water quality. The measured watershed nitrate concentration is about 0.5 mg N/l which is in the low range for PEI. This result covers 67% of the watershed and it is from stream sampling data collected by the Department of Environment, Energy and Climate Action (2008-2009). Anoxic events have not been reported in the Miminegash River estuary in the last 5 years (2015-2019) and no fish kills related to run-off have been documented. Sediment laden run-off events were recently reported to occur frequently by the Roseville / Miminegash Watersheds Inc. Another reported issue include a lack of riparian cover in the watershed.

Other Information

If you have any questions about water quality in this or any other watershed in P.E.I., please contact the provincial Department of Environment, Energy and Climate Action at 1-866-368-5044 and/or the [local community watershed group](#). The Department is working with a local community group, the Roseville / Miminegash Watersheds Inc, to address water quality issues in the Miminegash River watershed.

View how the Water Quality Score is calculated [here](#). View the data used for this calculation [here](#).

View or download the available raw water quality monitoring data from the PEI Department of Environment, Energy and Climate Action [here](#).

Return to the list of watersheds [here](#).

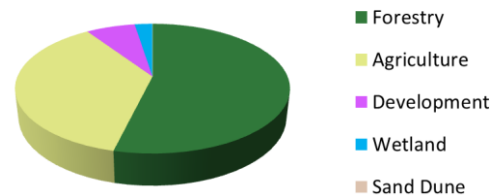
Montague / Valleyfield River Map



Water Quality Score



Land Use



Watershed Area
196.44 km²

Status

The Montague/Valleyfield River watershed has **Good** water quality. The measured watershed nitrate concentration is 1.5 mg N/l which is in the low to moderate range for PEI. This result covers about 70% of the watershed and is from stream sampling data collected by the Department Environment, Energy and Climate Action (2017-2019). Anoxic events were recorded in a small tributary of the Montague/Valleyfield estuary twice in the last 5 years (2018, 2019) but there have been no fish kills related to run-off documented in the last 10 years (2010-2019). Sediment laden run-off (red water) events were recently reported to occur very frequently in the watershed by the Southeast Environmental Association.

Other Information

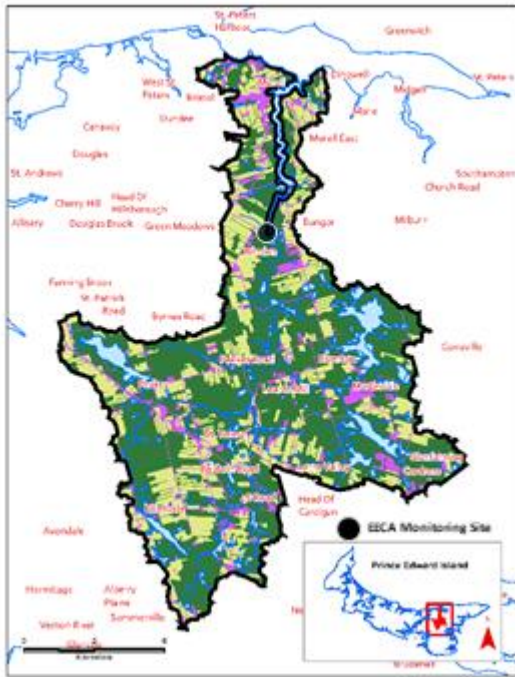
If you have any questions about water quality in this or any other watershed in P.E.I., please contact the provincial Department of Environment, Energy and Climate Action at 1-866-368-5044 and/or [the local community watershed group](#). The Department is working with a local community group, the Southeast Environmental Association, to protect water quality in the Montague River/Valleyfield River watershed.

View how the Water Quality Score is calculated [here](#). View the data used for this calculation [here](#).

View or download the available raw water quality monitoring data from the PEI Department of Environment, Energy and Climate Action [here](#).

Return to the list of watersheds [here](#).

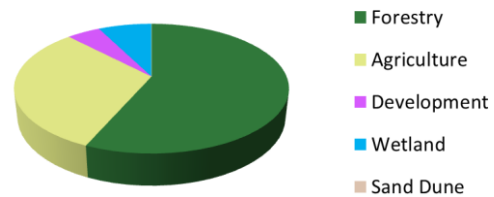
Morell River Map



Water Quality Score



Land Use



Watershed Area
175.49 km²

Status

The Morell River watershed has **Good** water quality. The measured watershed nitrate concentration is 0.9 mg N/l which is in the low range for PEI. This result covers about 85% of the watershed and is from stream sampling data collected by the Department of Environment, Energy and Climate Action (2017-2019). An anoxic event was reported in the Morell River estuary in 2016 but no fish kills related to run-off have been documented in the last 10 years (2010-2019). Sediment laden run-off (red water) events were recently reported to occur frequently by the Morell River Management Co-operative. The average groundwater nitrate concentration in the watershed is above 3 mg N/l. High water temperatures have also been reported for streams in the watershed.

Other Information

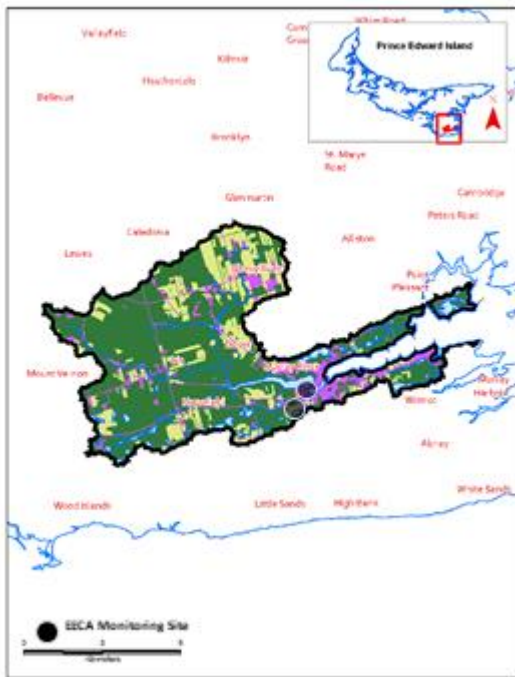
If you have any questions about water quality in this or any other watershed in P.E.I., please contact the provincial Department of Environment, Energy and Climate Action at 1-866-368-5044 and/or the [local community watershed group](#). The Department is working with a local community group, the Morell River Management Co-operative, to address water quality issues in the Morell River watershed.

View how the Water Quality Score is calculated [here](#). View the data used for this calculation [here](#).

View or download the available raw water quality monitoring data from the PEI Department of Environment, Energy and Climate Action a [here](#).

Return to the list of watersheds [here](#).

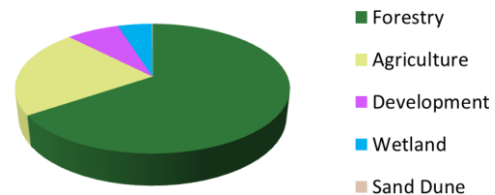
Murray River Map



Water Quality Score



Land Use



Watershed Area
70.27 km²

Status

The Murray River watershed has **Good** water quality. The measured watershed nitrate concentration is < 0.2 mg/l which is in the very low range for PEI. This result covers about 81% of the watershed and is from stream sampling data collected by the Department of Environment, Energy and Climate Action (2007-2010, 2016). No anoxic events were recorded in the Murray River estuary in the last 5 years (2015-2019) and no fish kills related to run-off have been documented in the watershed. Sediment laden run-off (red water) events were recently reported to occur infrequently the Southeast Environmental Association. One concern is cyanobacteria (blue-green algae) blooms which have been recorded in MacLure's Dam on several occasions, the last time in 2018.

Other Information

If you have any questions about water quality in this or any other watershed in P.E.I., please contact the provincial Department of Environment, Energy and Climate Action at 1-866-368-5044 and/or the [local community watershed group](#). The Department is working with a local community group, the Southeast Environmental Association, to protect water quality in the Murray River watershed.

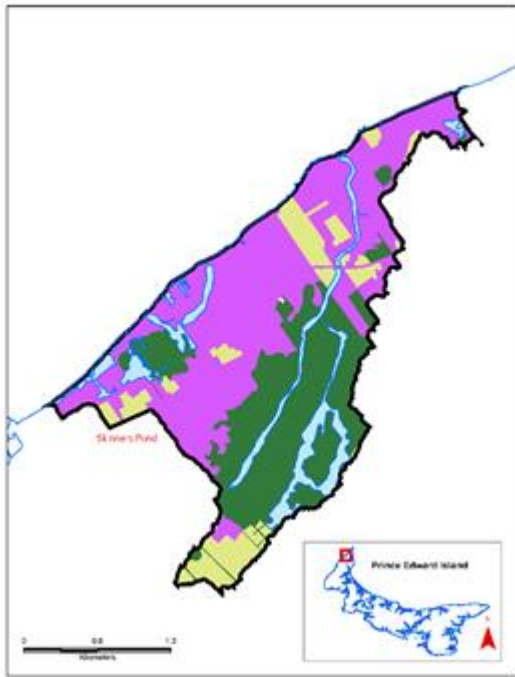
View how the Water Quality Score is calculated [here](#). View the data used for this calculation [here](#).

View or download the available raw water quality monitoring data from the PEI Department of Environment, Energy and Climate Action [here](#).

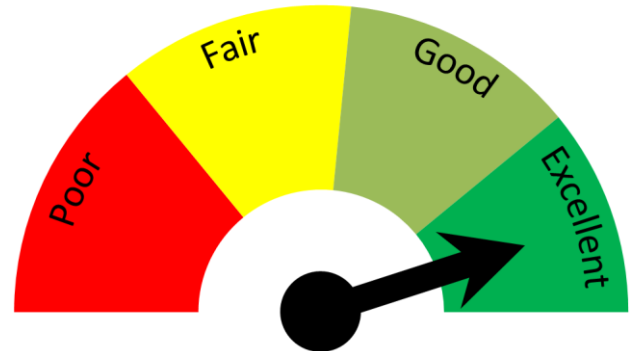
Return to the list of watersheds [here](#).

Nail Head

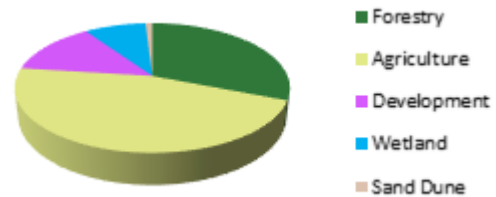
Map



Water Quality Score



Land Use



Watershed Area
5.24 km²

Status

The Nail Head watershed has **Excellent** water quality. The modelled watershed nitrate concentration is 1.3 mg N/l which is in the low range for PEI. The Nail Head watershed has no estuary so estuarine anoxia is not a factor. No fish kills related to run-off have been documented in the watershed. Sediment laden run-off (red water) events were recently reported to occur infrequently by the Tignish and Area Watershed Management Group Inc.

Other Information

If you have any questions about water quality in this or any other watershed in P.E.I., please contact the provincial Department of Environment, Energy and Climate Action at 1-866-368-5044 and/or the [local community watershed group](#). The Department is working with a local community group, the Tignish and Area Watershed Management Group Inc., to protect water quality in the Nail Head watershed.

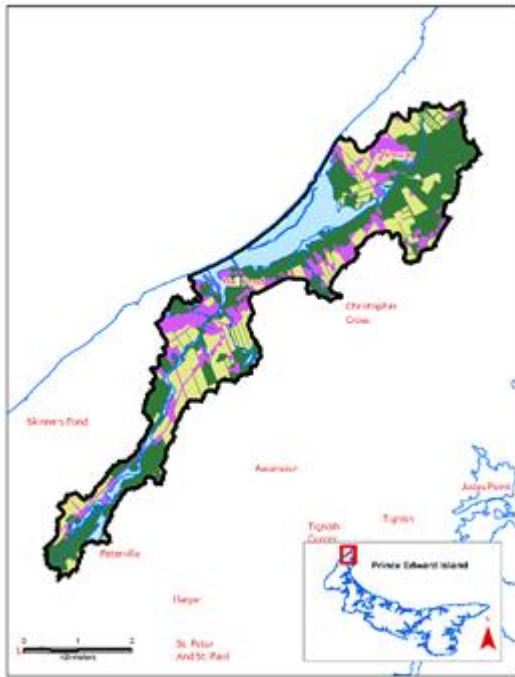
View how the Water Quality Score is calculated [here](#). View the data used for this calculation [here](#).

View or download the available raw water quality monitoring data from the PEI Department of Environment, Energy and Climate Action [here](#).

Return to the list of watersheds [here](#).

Nail Pond

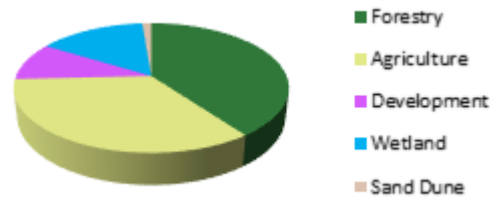
Map



Water Quality Score



Land Use



Watershed Area
15.16 km²

Status

The Nail Pond watershed has **Good** water quality. The modelled watershed nitrate concentration is 1.8 mg N/l which is in the moderate range for PEI. Anoxia has never been reported in the large barrier beach pond and no fish kills related to run-off have been documented in the watershed. Sediment laden run-off (red water) events were recently reported to occur infrequently by the Tignish and Area Watershed Management Group Inc. The average watershed groundwater nitrate concentration is above 3 mg/l.

Other Information

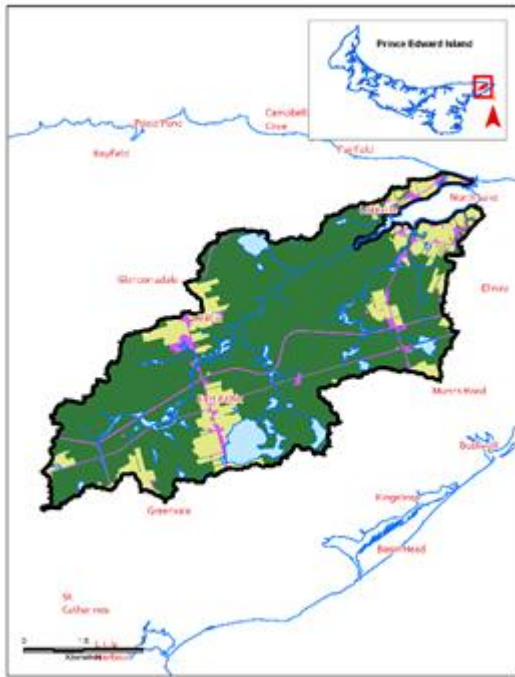
If you have any questions about water quality in this or any other watershed in P.E.I., please contact the provincial Department of Environment, Energy and Climate Action at 1-866-368-5044 and/or the [local community watershed group](#). The Department is working with a local community group, the Tignish and Area Watershed Management Group Inc., to protect water quality in the Nail Pond watershed.

View how the Water Quality Score is calculated [here](#). View the data used for this calculation [here](#).

View or download the available raw water quality monitoring data PEI Department of Environment, Energy and Climate Action [here](#).

Return to the list of watersheds [here](#).

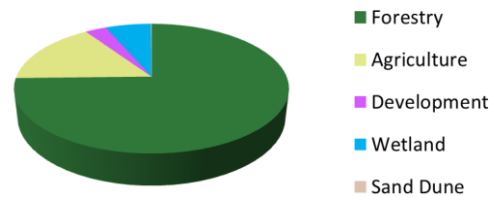
North Lake Map



Water Quality Score



Land Use



Watershed Area
47.52 km²

Status

The North Lake watershed has **Good** water quality. The modelled watershed nitrate concentration is 1.3 mg N/l which is in the low range for PEI. Anoxic events have never been reported in the North Lake lagoon and no fish kills related to run-off have ever been recorded in the watershed. Recent expert opinion is that sediment laden run-off (red water) events may occur infrequently in the watershed. The average groundwater nitrate concentration in the watershed is above 3 mg N/l.

Other Information

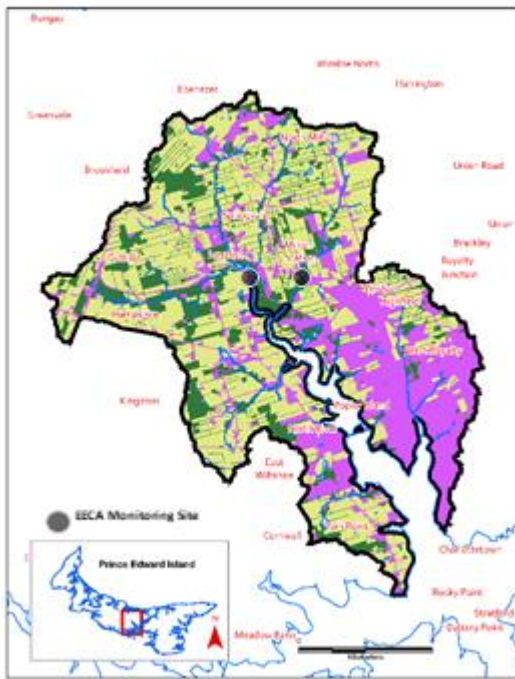
If you have any questions about water quality in this or any other watershed in P.E.I., please contact the provincial Department of Environment, Energy and Climate Action at 1-866-368-5044 and/or the [local community watershed group](#). The Department is working with a local community group, the Souris and Area Branch of the PEI Wildlife Federation, to protect water quality in the North Lake watershed.

View how the Water Quality Score is calculated [here](#). View the data used for this calculation [here](#).

View or download the available raw water quality monitoring data from the PEI Department of Environment, Energy and Climate Action [here](#).

Return to the list of watersheds [here](#).

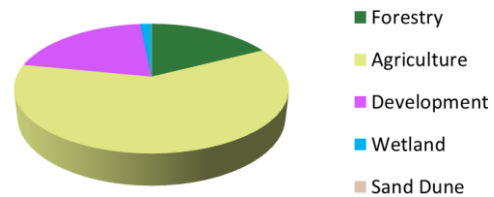
North River Map



Water Quality Score



Land Use



Watershed Area
97.19 km²

Status

The North River watershed has **Fair** water quality. The measured watershed nitrate concentration is 3.3 mg N/l which is in the high range for PEI. This result covers 48% of the watershed and is from stream sampling data collected by the Department of Environment, Energy and Climate Action (2009, 2012, 2015, 2018). No anoxic events have been recorded in the North River estuary in the last 5 years and one fish kill related to run-off kill was recorded in the watershed in the last 10 years (2014). Sediment laden run-off (red water) events were recently reported to occur very frequently by the Cornwall and Area Watershed Group Inc. (CAWG). Some elevated water temperatures, possibly associated with low flows, have been reported by the CAWG.

Other Information

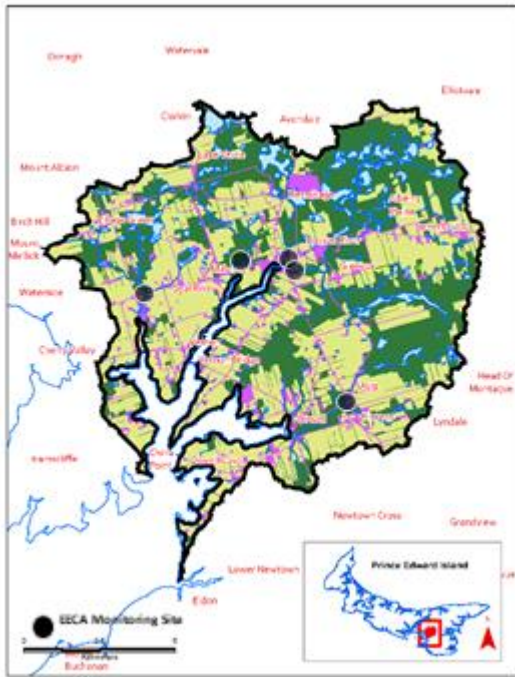
If you have any questions about water quality in this or any other watershed in P.E.I., please contact the provincial Department of Environment, Energy and Climate Action at 1-866-368-5044 and/or [the local community watershed group](#). The Department is working with two local community groups, the Cornwall and Area Watershed Group Inc. and the Ellen's Creek Watershed Group Inc. to address water quality issues in the North River watershed.

View how the Water Quality Score is calculated [here](#). View the data used for this calculation [here](#).

View or download the available raw water quality monitoring data from the PEI Department of Environment, Energy and Climate Action [here](#).

Return to the list of watersheds [here](#).

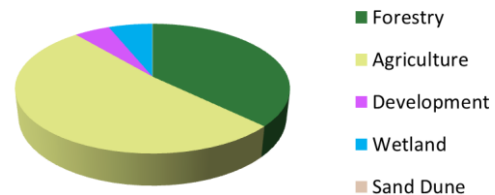
Orwell River/Vernon River Map



Water Quality Score



Land Use



Watershed Area
126.40 km²

Status

The Orwell River/Vernon River watershed has **Good** water quality. The measured watershed nitrate concentration is 1.9 mg N/l which is in the moderate range for PEI. This result covers 67% of the watershed and is from stream sampling data collected by the Department of Environment, Energy and Climate Action (2008-2010, 2013, 2016, 2019). No anoxic events have been recorded in the Orwell/Vernon River estuary in the last five years (2015-2019) and no fish kills related to run-off have been documented in the last 10 years (2010-2019). Sediment laden run-off (red water) events were recently reported to occur very frequently by the Belfast and Area Watershed Grouping. The average groundwater nitrate concentration in the watershed is above 3 mg N/l.

The watershed used for this assessment has been drawn to contain the drainage area of the entire Orwell / Vernon estuary. It has 4 subwatersheds which would have water quality in the Fair (Orwell Cove, Orwell River) to Good (Vernon River, Seal River) categories if considered separately.

Other Information

If you have any questions about water quality in this or any other watershed in P.E.I., please contact the provincial Department of Environment, Energy and Climate Action at 1-866-368-5044 and/or the [local community watershed group](#). The Department is working with a local community group, the Belfast and

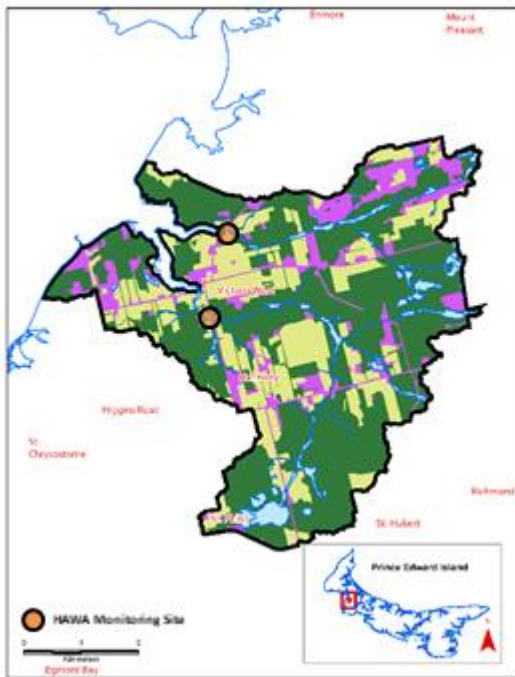
Area Watershed Management Grouping, to address water quality issues in the Orwell/Vernon River watershed.

View how the Water Quality Score is calculated [here](#). View the data used for this calculation [here](#).

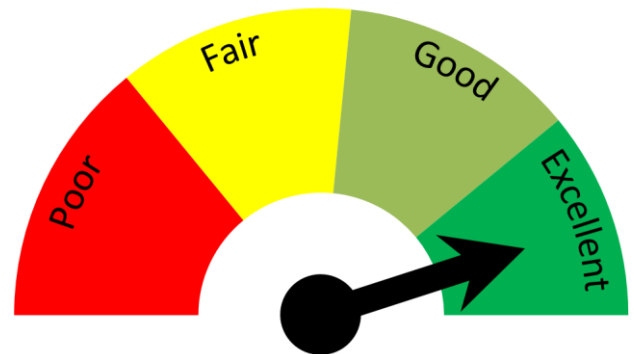
View or download the available raw water quality monitoring data from the PEI Department of Environment, Energy and Climate Action [here](#).

Return to the list of watersheds [here](#).

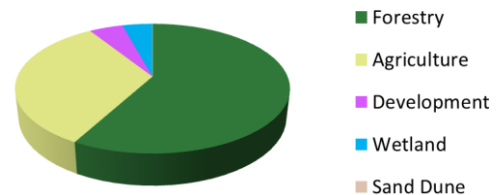
Ox/Sheep River Map



Water Quality Score



Land Use



Watershed Area
29.24 km²

Status

The Ox/Sheep River Watershed has **Excellent** water quality. The measured watershed nitrate concentration is 0.9 mg N/l which is in the low range for PEI. This result covers about 76% of the watershed and is from data collected by the Harmony and Area Watersheds Enhancement Group (HAWEG)(2012- 2017). No anoxic events have been reported in the Ox/Sheep River estuary and no fish kills related to run-off have been documented in the watershed. Sediment laden run-off (red water) events were recently reported to occur infrequently by the HAWEG.

Other Information

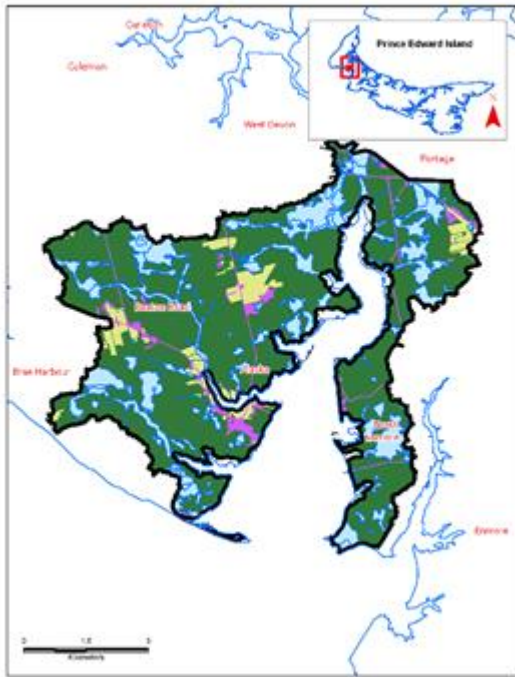
If you have any questions about water quality in this or any other watershed in P.E.I., please contact the provincial Department of Environment, Energy and Climate Action at 1-866-368-5044 and/or the [local community watershed group](#). The Department is working with a local community group, the Harmony and Area Watersheds Enhancement Group, to protect water quality in the Ox/Sheep River watershed.

View how the Water Quality Score is calculated [here](#). View the data used for this calculation [here](#).

View or download the available raw water quality monitoring data from the PEI Department of Environment, Energy and Climate Action [here](#).

Return to the list of watersheds [here](#).

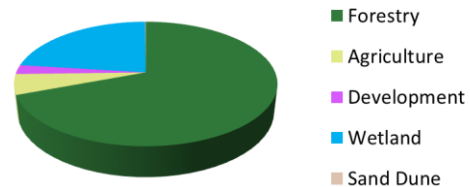
Percival River Map



Water Quality Score



Land Use



Watershed Area
50.08 km²

Status

The Percival Bay watershed has **Good** water quality. The modelled watershed nitrate concentration is 0.7 mg N/l which is in the low range for PEI. No anoxic events have been reported in Percival Bay and no fish kills related to run-off have been documented in the watershed. Sediment laden run-off (red water) events were recently reported to be infrequent by Trout Unlimited Prince County Branch (TUPCB). TUPCB reports some low dissolved oxygen results in streams. There is some debate on whether to include high temperature and stream sediments as issues of concern for the tributary streams. Some argue that this is a natural situation for the streams because of their low gradient while some may argue that this is due to beaver impoundments.

Other Information

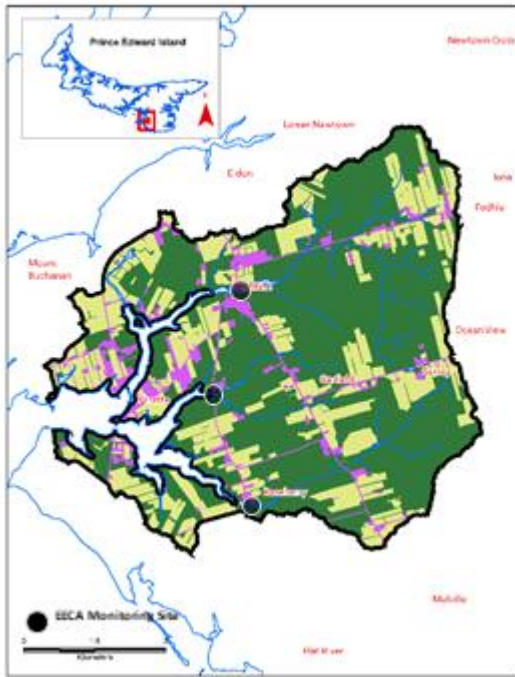
If you have any questions about water quality in this or any other watershed in P.E.I., please contact the provincial Department of Environment, Energy and Climate Action at 1-866-368-5044 and/or the [local community watershed group](#). The Department is working with a local community group, the Prince County Branch Trout Unlimited Canada, to protect water quality in the Percival River watershed.

View how the Water Quality Score is calculated [here](#). View the data used for this calculation [here](#).

View or download the available raw water quality monitoring data from the PEI Department of Environment, Energy and Climate Action [here](#).

Return to the list of watersheds [here](#).

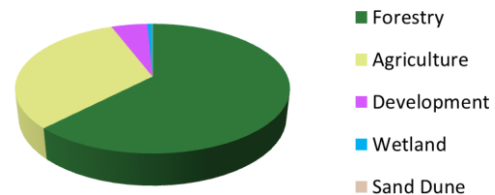
Pinette River Map



Water Quality Score



Land Use



Watershed Area
53.08 km²

Status

The Pinette River watershed has **Good** water quality. The measured watershed nitrate concentration is 1.2 mg N/l which is in the low range for PEI. This result covers 65% of the watershed and is from stream sampling data collected by the Department of Environment, Energy and Climate Action (2008-2009, 2016, 2019). No anoxic events have been recorded in the Pinette River estuary in the last 5 years (2015-2019) and no fish kills related to run-off have been documented in the watershed. Sediment laden run-off (red water) were recently reported to occur infrequently by the Belfast and Area Watershed Grouping. The average groundwater nitrate concentration in the watershed is above 3 mg N/l.

The watershed used for this assessment has been drawn to contain the drainage area of the entire Percival River estuary. It has 2 subwatersheds (Beatons Creek, Percival River) which would both have water quality in the Good category if considered separately.

Other Information

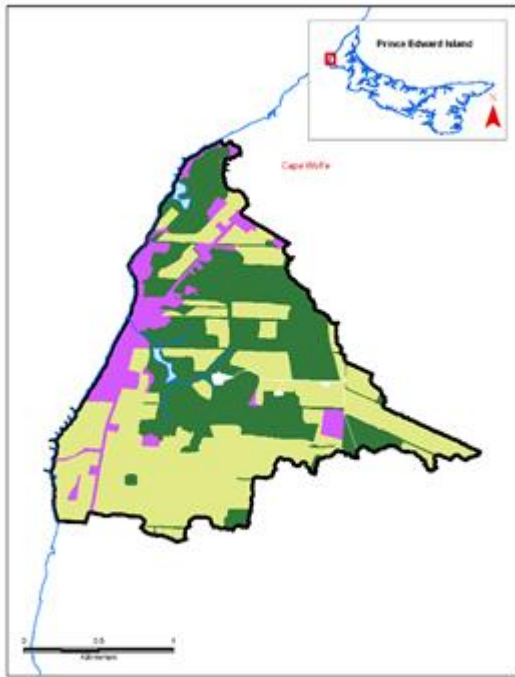
If you have any questions about water quality in this or any other watershed in P.E.I., please contact the provincial Department of Environment, Energy and Climate Action at 1-866-368-5044 and/or the [local community watershed group](#). The Department is working with a local community group, the Belfast and Area Watershed Grouping, to protect water quality in the Pinette River watershed.

View how the Water Quality Score is calculated [here](#). View the data used for this calculation [here](#).

View or download the available raw water quality monitoring data from the PEI Department of Environment, Energy and Climate Action [here](#).

Return to the list of watersheds [here](#).

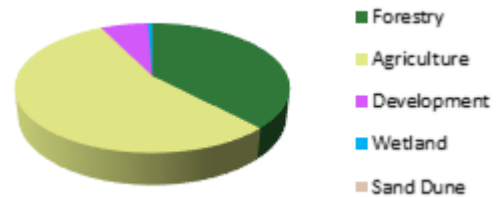
Pollard Brook Map



Water Quality Score



Land Use



Watershed Area
3.47 km²

Status

The Pollard Brook watershed has **Good** water quality. The modelled watershed nitrate concentration is 3.6 mg N/l which is in the high range for PEI. The Pollard Brook watershed has no estuary so estuarine anoxia is not an issue. No fish kills related to run-off have been documented in the watershed. Sediment laden run-off (red water) events were recently reported to occur infrequently by the West Point and Area Watersheds Inc.

Other Information

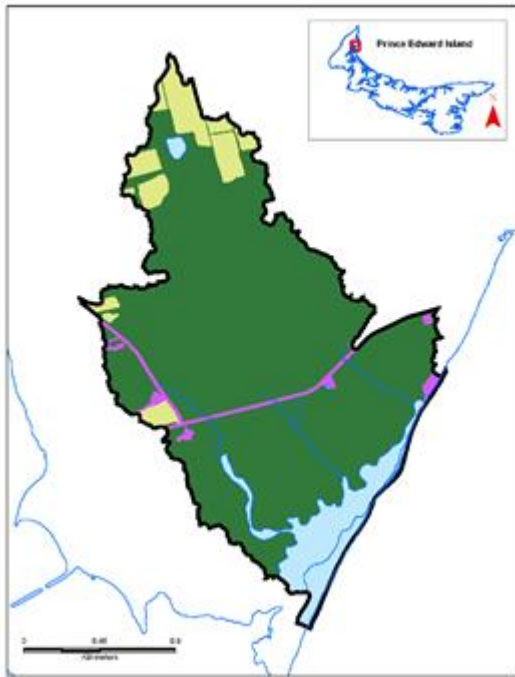
If you have any questions about water quality in this or any other watershed in P.E.I., please contact the provincial Department of Environment, Energy and Climate Action at 1-866-368-5044 and/or the [local community watershed group](#). The Department is working with a local community group, the West Point and Area Watersheds Inc., to address water quality issues in the Pollard Brook watershed.

View how the Water Quality Score is calculated [here](#). View the data used for this calculation [here](#).

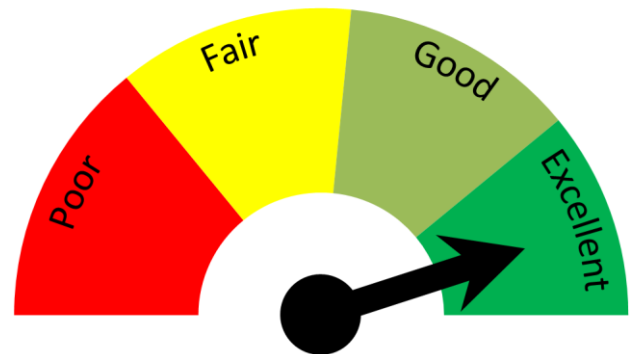
View or download the available raw water quality monitoring data PEI Department of Environment, Energy and Climate Action [here](#).

Return to the list of watersheds [here](#).

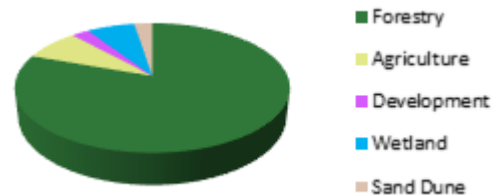
Rayners Pond Map



Water Quality Score



Land Use



Watershed Area
3.50 km²

Status

The Rayners Pond watershed has **Excellent** water quality. The modelled watershed nitrate concentration is 0.8 mg N/l which is in the low range for PEI. Rayners Pond has no estuary so estuarine anoxia is not an issue. No fish kills related to run-off have been documented in the watershed. Sediment laden run-off (red water) events were recently reported to occur infrequently by the Tignish and Area Watershed Management Group.

Other Information

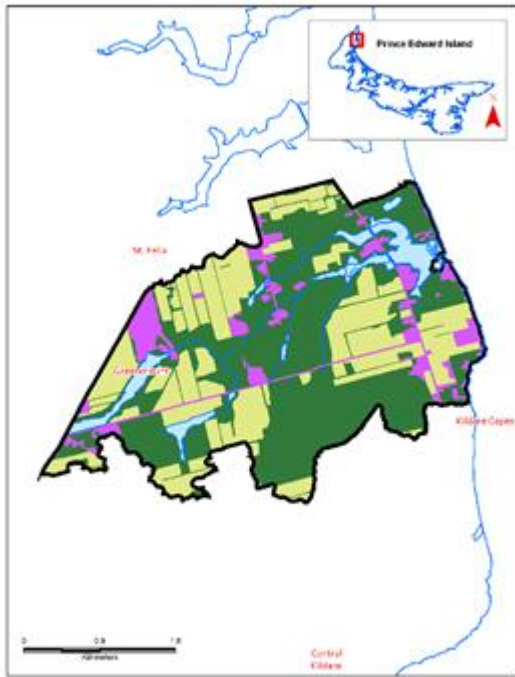
If you have any questions about water quality in this or any other watershed in P.E.I., please contact the provincial Department of Environment, Energy and Climate Action at 1-866-368-5044 and/or the [local community watershed group](#). The Department is working with a local community group, the Tignish and Area Watershed Management Group Inc., to protect water quality in the Rayners Pond watershed.

View how the Water Quality Score is calculated [here](#). View the data used for this calculation [here](#).

View or download the available raw water quality monitoring data from the PEI Department of Environment, Energy and Climate Action [here](#).

Return to the list of watersheds [here](#).

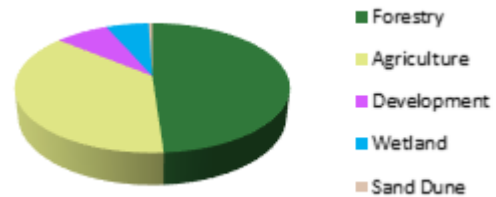
Round Pond Map



Water Quality Score



Land Use



Watershed Area
12.14 km²

Status

The Round Pond watershed has **Good** water quality. The modelled watershed nitrate concentration is 3.2 mg N/l which is in the high range for PEI. Anoxic events were not reported in the barrier beach pond between 2015 and 2019 and no fish kills related to run-off have been documented in the watershed. Sediment laden run-off (red water) events were recently reported as occurring frequently by the Tignish and Area Watershed Management Group Inc.

Other Information

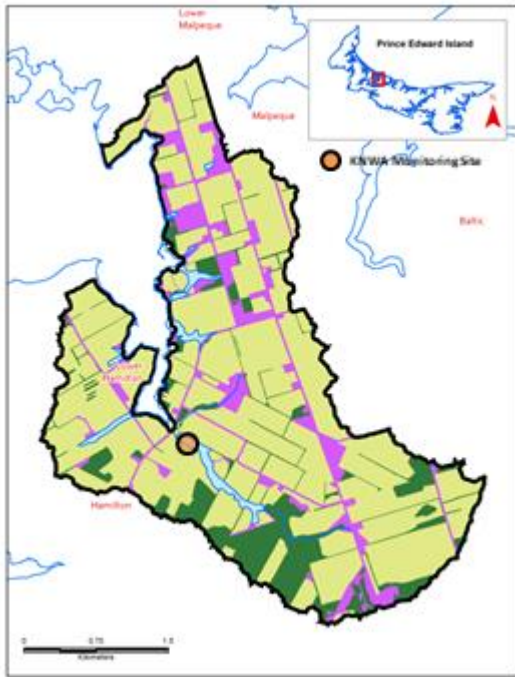
If you have any questions about water quality in this or any other watershed in P.E.I., please contact the provincial Department of Environment, Energy and Climate Action at 1-866-368-5044 and/or the [local community watershed group](#). The Department is working with a local community group, the Tignish and Area Watershed Management Group Inc., to address water quality issues in the Round Pond watershed.

View how the Water Quality Score is calculated [here](#). View the data used for this calculation [here](#).

View or download the available raw water quality monitoring data from the PEI Department of Environment, Energy and Climate Action [here](#).

Return to the list of watersheds [here](#).

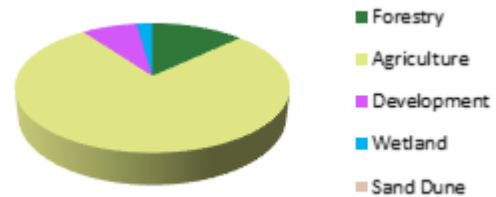
Shipyard Creek Map



Water Quality Score



Land Use



Watershed Area
12.05 km²

Status

The Shipyard Creek watershed has **Good** water quality. The measured watershed nitrate concentration is 3.6 mg N/l which is in the high range for PEI. This result covers 39% of the watershed and it is from stream sampling data collected by the Kensington North Watersheds Association Ltd. (KNWA) (2012-2013). Anoxic events have not been documented in the Shipyard Creek estuary but reports of foul odor have been received in the past. No fish kills related to run-off have been documented. Sediment laden run-off events were recently reported to be infrequent by the KNWA. The average groundwater nitrate concentration is above 5 mg/l.

Other Information

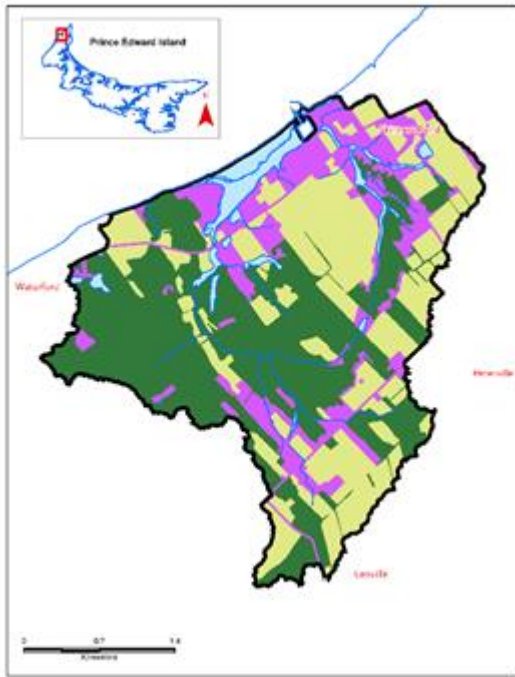
If you have any questions about water quality in this or any other watershed in P.E.I., please contact the provincial Department of Environment, Energy and Climate Action at 1-866-368-5044 and/or the [local community watershed group](#). The Department is working with a local community group, the Kensington North Watersheds Association Ltd., to address water quality issues in the Shipyard Creek watershed.

View how the Water Quality Score is calculated [here](#). View the data used for this calculation [here](#).

View or download the available raw water quality monitoring data from the PEI Department of Environment, Energy and Climate Action [here](#).

Return to the list of watersheds [here](#).

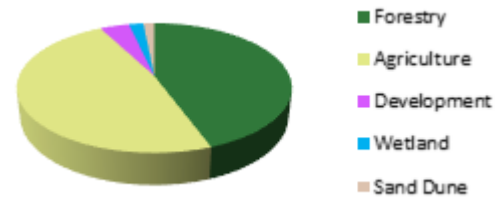
Skidders Pond Map



Water Quality Score



Land Use



Watershed Area
10.22 km²

Status

The Skidders Pond watershed has **Good** water quality. The modelled watershed nitrate concentration is 2.1 mg N/l which is in the moderate range for PEI. Anoxic events have never been reported in the Skidders Pond lagoon and no fish kills related to run-off have been documented in the watershed. Sediment laden run-off (red water) events were recently reported to be infrequent by the Tignish and Area Watershed Management Group,

Other Information

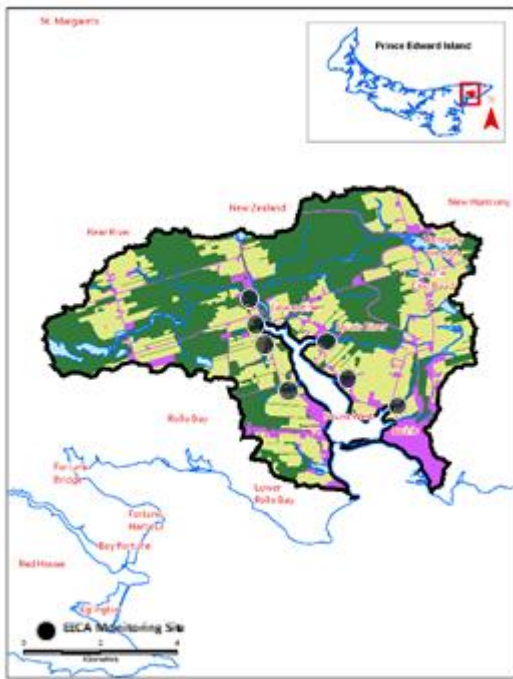
If you have any questions about water quality in this or any other watershed in P.E.I., please contact the provincial Department of Environment, Energy and Climate Action at 1-866-368-5044 and/or the [local community watershed group](#). The Department is working with a local community group, the Tignish and Area watershed Management Group Inc., to protect water quality in the Skidders Pond watershed.

View how the Water Quality Score is calculated [here](#). View the data used for this calculation [here](#).

View or download the available raw water quality monitoring data from the PEI Department of Environment, Energy and Climate Action [here](#).

Return to the list of watersheds [here](#).

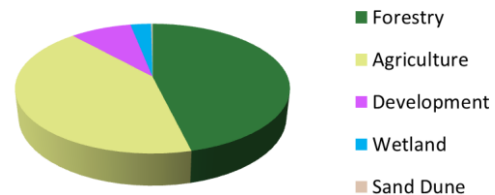
Souris River Map



Water Quality Score



Land Use



Watershed Area
52.51 km²

Status

The Souris River watershed has **Fair** water quality. The measured watershed nitrate concentration is 2.3 mg N/l which is in the moderate range for PEI. This result covers about 56% of the watershed and is from stream sampling data collected by the Department of Environment, Energy and Climate Action (2007-2008, 2010-2011). Anoxic events were recorded in the Souris River estuary twice in the last 5 years (2015, 2019) but no fish kills related to run-off have been documented in the watershed in the last 10 years (2010-2019). Recent expert opinion is that sediment laden run-off (red water) events may occur frequently in the watershed. Some elevated water temperatures have been recorded in one pond in the watershed by the Souris and Area Wildlife Federation and average groundwater nitrate levels are > 3 mg N/l.

Other Information

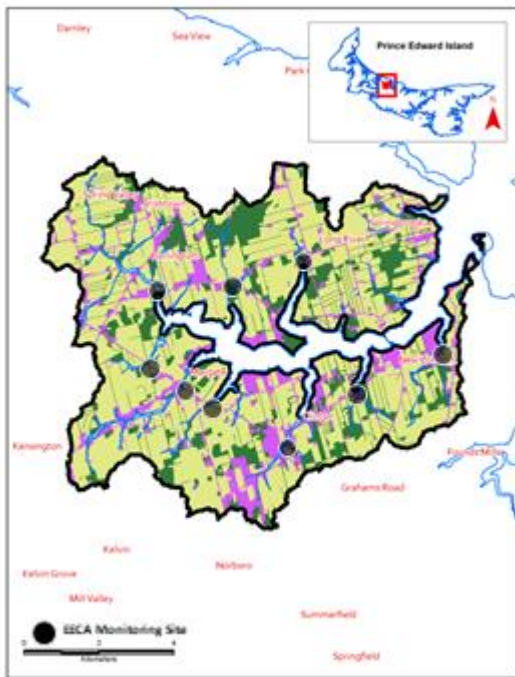
If you have any questions about water quality in this or any other watershed in P.E.I., please contact the provincial Department of Environment, Energy and Climate Action at 1-866-368-5044 and/or the [local community watershed group](#). The Department is working with a local community group, the Souris and Area Branch of the PEI Wildlife Federation, to address water quality issues in the Souris River watershed.

View how the Water Quality Score is calculated [here](#). View the data used for this calculation [here](#).

View or download the available raw water quality monitoring data from the PEI Department of Environment, Energy and Climate Action [here](#).

Return to the list of watersheds [here](#).

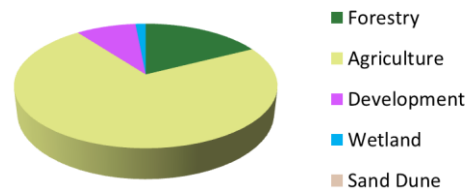
Southwest River Map



Water Quality Score



Land Use



Watershed Area
74.71 km²

Status

The Southwest River watershed has **Fair** water quality. The measured watershed nitrate concentration is 4.7 g N/l which is in the high range for PEI. This result covers about 56% of the watershed and is from stream sampling data collected by the Department Environment, Energy and Climate Action (2010-2014, 2017 - 2018) and the Kensington North Watersheds Association (KNWA) (2019). Anoxic events have occurred in the Southwest River estuary and/or some of its salt water tributaries in each of the last 5 years (2015-2019) but no fish kills related to run-off have been documented in the watershed. Sediment laden run-off events were recently reported to be infrequent by the Kensington North Watersheds Association (KNWA). A freshwater pond in the watershed had an anoxic event in 2016. The average groundwater nitrate concentration in the watershed is above 3 mg N/l. Lack of riparian cover has also been reported as an issue by the KNWA.

The watershed used for this assessment has been drawn to contain the drainage area of the entire Southwest River estuary. It has 8 subwatersheds which would have water quality in the Poor (Durant Creek, Tuplin Creek) to Fair (MacIntyres Creek, Sutherland Creek, Harding Creek, Southwest River, Long River, Paynters Creek) categories if considered separately.

Other Information

If you have any questions about water quality in this or any other watershed in P.E.I., please contact the provincial Department of Environment, Energy and Climate Action at 1-866-368-5044 and/or the [local](#)

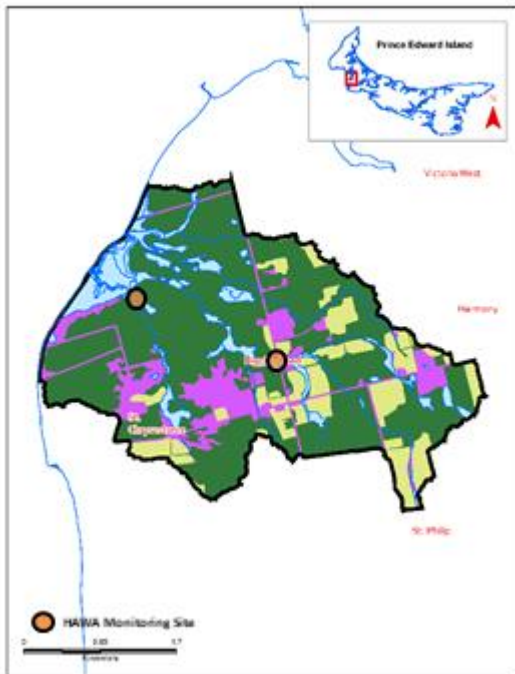
[community watershed group](#). The Department is working with a local community group, the Kensington North Watersheds Association Ltd., to address water quality issues in the Southwest River watershed.

View how the Water Quality Score is calculated [here](#). View the data used for this calculation [here](#).

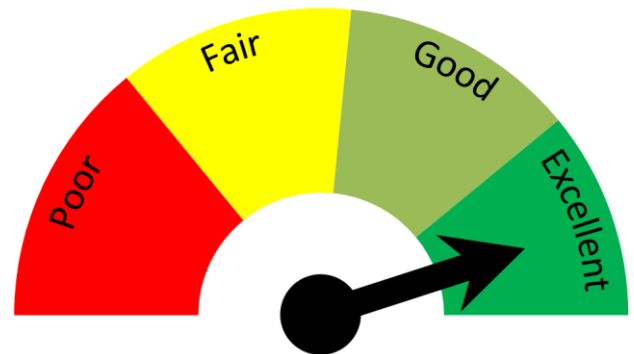
View or download the available raw water quality monitoring data from the PEI Department of Environment, Energy and Climate Action [here](#).

Return to the list of watersheds [here](#).

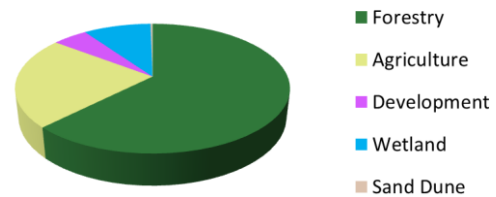
St. Chrysostome/Barachois River Map



Water Quality Score



Land Use



Watershed Area
10.56 km²

Status

The St. Chrysostome/Barachois Run watershed has **Excellent** water quality. The measured watershed nitrate concentration is 1.2 mg N/l which is in the low range for PEI, This result covers about 42% of the watershed and is from data collected by the Harmony and Area Watersheds Enhancement Group (HAWEG)(2008-2015). Anoxic events have never been reported in the St. Chrysostome/Barachois Run beach pond. No fish kills related to run-off have been documented in the watershed. Sediment laden run-off (red water) events were reported to occur infrequently by the HAWEG.

Other Information

If you have any questions about water quality in this or any other watershed in P.E.I., please contact the provincial Department of Environment, Energy and Climate Action at 1-866-368-5044 and/or [the local community watershed group](#). The Department is working with a local community group, the Harmony and Area Watersheds Enhancement Group Inc., to protect water quality in the St. Chrysostome/Barachois River watershed.

View how the Water Quality Score is calculated [here](#). View the data used for this calculation [here](#).

View or download the available raw water quality monitoring data from the PEI Department of Environment, Energy and Climate Action [here](#).

Return to the list of watersheds [here](#).

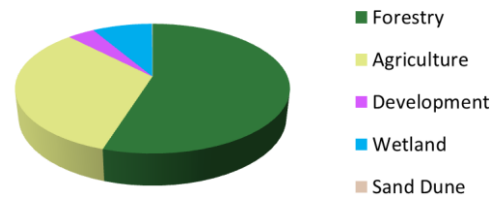
St. Peter's Bay Map



Water Quality Score



Land Use



Watershed Area
137.04 km²

Status

The St. Peter's Bay watershed has **Good** water quality. The measured watershed nitrate concentration is 0.4 mg N/l which is in the very low range for PEI. This result covers 63% of the watershed and is from stream sampling data collected by the Department of Environment, Energy and Climate Action (2006-2010, 2013, 2016, 2019). Anoxic events have been recorded in St. Peter's Bay or its tributaries in two of the last 5 years (2016, 2018) but no fish kills related to run-off have been documented in the watershed. Sediment laden run-off (red water) events were recently reported to be infrequent by the Morell River Management Cooperative. The average groundwater nitrate concentration in the watershed is above 3 mg N/l. The watershed used for this assessment has been drawn to contain the drainage area of St. Peter's Bay without the Morell River. It has 3 subwatersheds (Marie River, Midgell River, and St. Peter's River) which would all have water quality in the Good category if considered separately.

Other Information

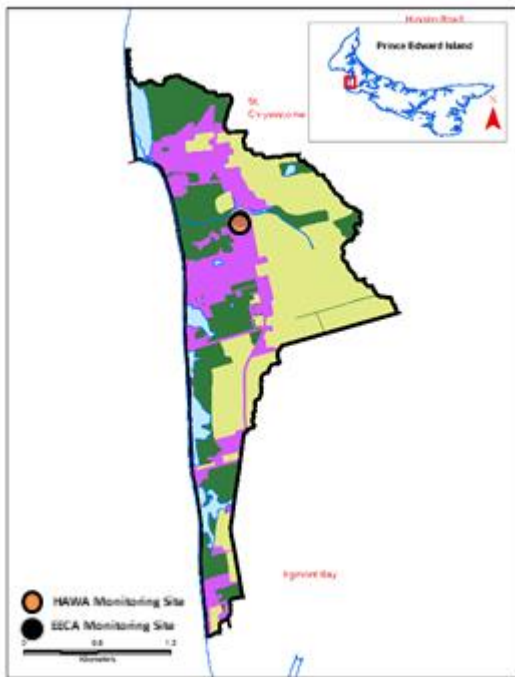
If you have any questions about water quality in this or any other watershed in P.E.I., please contact the provincial Department of Environment, Energy and Climate Action at 1-866-368-5044 and/or the [local community watershed group](#). The Department is working with a local community group, the Morell River Management Co-operative, to address water quality issues in the St. Peter's Bay watershed.

View how the Water Quality Score is calculated [here](#). View the data used for this calculation [here](#).

View or download the available raw water quality monitoring data from the PEI Department of Environment, Energy and Climate Action [here](#).

Return to the list of watersheds [here](#).

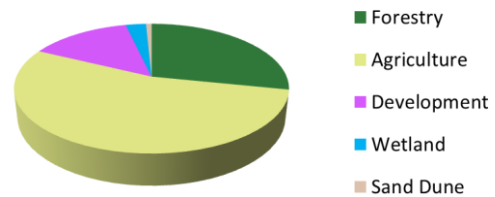
St. Philip Shore Map



Water Quality Score



Land Use



Watershed Area
3.81 km²

Status

The St. Philip Shore watershed has **Good** water quality. The measured watershed nitrate concentration is 3.5 mg N/l, which is in the high range for PEI. This result covers about 19% of the watershed and is from data collected by Department of Environment, Energy and Climate Action (2015-2016) and the Harmony and Area Watersheds Enhancement Group (HAWEG) (2015). There is no estuary associated with this watershed, so estuarine anoxia is not an issue. No fish kills related to run-off have ever been documented in the watershed. Sediment laden run-off (red water) events were recently reported to be infrequent by HAWEG. Other reported concerns are stream habitat issues and a lack of fish in the single stream in this watershed. The average groundwater nitrate concentration in the watershed is above 3 mg N/l.

Other Information

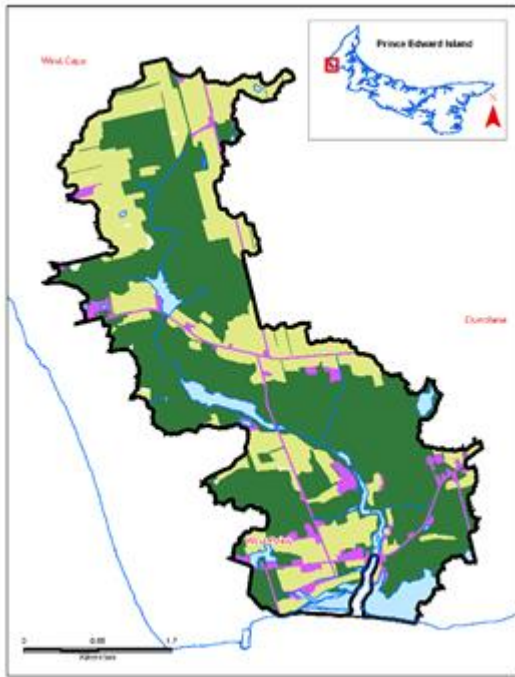
If you have any questions about water quality in this or any other watershed in P.E.I., please contact the provincial Department of Environment, Energy and Climate Action at 1-866-368-5044 and/or the [local community watershed group](#). The Department is working with a local community group, the Harmony and Area Watersheds Enhancement Group, to address water quality issues in the St. Philip Shore watershed.

View how the Water Quality Score is calculated [here](#). View the data used for this calculation [here](#).

View or download the available raw water quality monitoring data from the PEI Department of Environment, Energy and Climate Action [here](#).

Return to the list of watersheds [here](#).

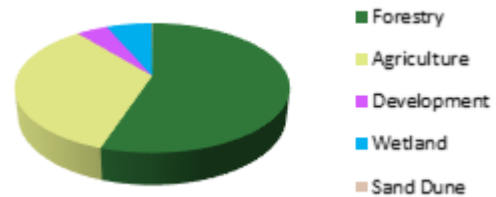
Stewarts Creek Map



Water Quality Score



Land Use



Watershed Area
14.64 km²

Status

The Stewarts Creek watershed has **Good** water quality. The modelled watershed nitrate concentration is 2.5 mg N/l which is in the moderate range for PEI. Anoxic events have not been reported in the small estuary and no fish kills related to run-off have been documented in the watershed. Sediment laden run-off (red water) events were recently reported to be infrequent by the West Point and Area Watersheds Inc. The average groundwater nitrate concentration is above 3 mg/l.

Other Information

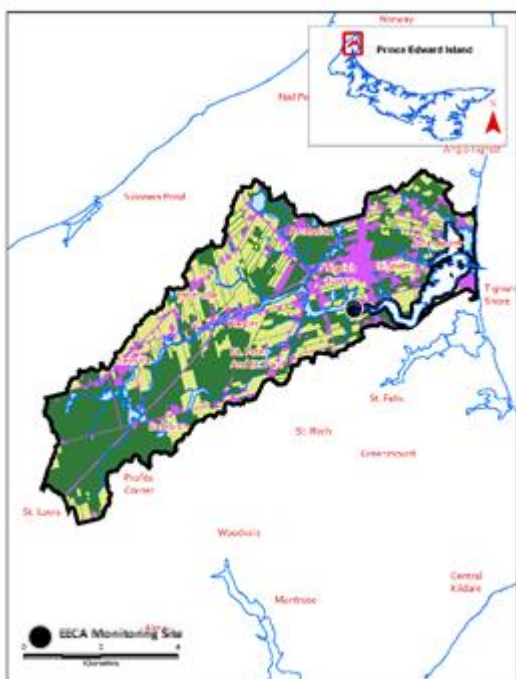
If you have any questions about water quality in this or any other watershed in P.E.I., please contact the provincial Department of Environment, Energy and Climate Action at 1-866-368-5044 and/or [the local community watershed group](#). The Department is working with a local community group, the West Point and Area Watersheds Inc., to protect water quality in the Stewarts Creek watershed.

View how the Water Quality Score is calculated [here](#). View the data used for this calculation [here](#).

View or download the available raw water quality monitoring data from the PEI Department of Environment, Energy and Climate Action [here](#).

Return to the list of watersheds [here](#).

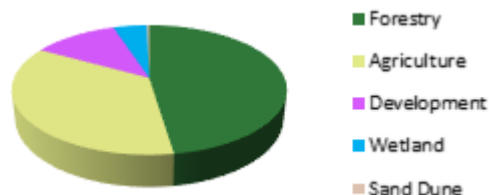
Tignish River Map



Water Quality Score



Land Use



Watershed Area
32.41 km²

Status

The Tignish River watershed has **Fair** water quality. The measured watershed nitrate concentration is 2.9 mg N/l which is in the moderate range for PEI. This result covers 76% of the watershed and it is from stream sampling data collected by the Department of Environment, Energy and Climate Action (2008-2009). One anoxic events was recorded in the Tignish River estuary in the last 5 years (2015, 2017) but no fish kills related to run-off have been documented in the watershed. Sediment laden run-off events were recently reported to occur frequently by the Tignish and Area Watershed Management Group (TAWMG). High water temperatures and lack of riparian cover have been reported as water quality issues by the TAWMG.

Other Information

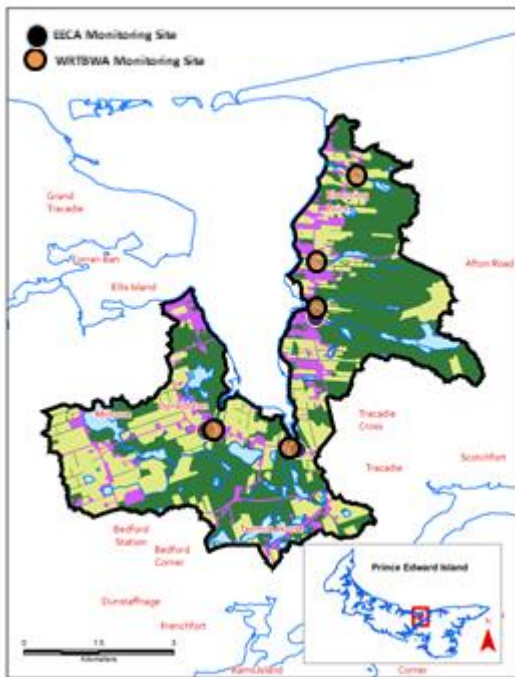
If you have any questions about water quality in this or any other watershed in P.E.I., please contact the provincial Department of Environment, Energy and Climate Action at 1-866-368-5044 and/or the [local community watershed group](#). The Department is working with a local community group, the Tignish and Area Watershed Management Group Inc., to address water quality issues in the Tignish River watershed.

View how the Water Quality Score is calculated [here](#). View the data used for this calculation [here](#).

View or download the available raw water quality monitoring data from the PEI Department of Environment, Energy and Climate Action [here](#).

Return to the list of watersheds [here](#).

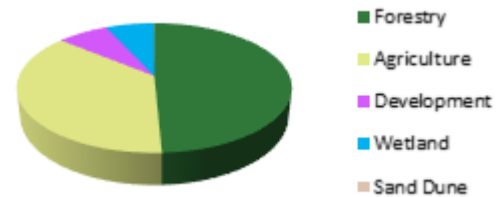
Tracadie Bay Map



Water Quality Score



Land Use



Watershed Area
29.96 km²

Status

The Tracadie Bay watershed has **Good** water quality. The measured watershed nitrate concentration is 1.7 mg N/l which is in the moderate range for PEI. This result covers 54% of the watershed and is from stream sampling data collected by the Department Environment, Energy and Climate Action (2007 - 2009) and the Winter River Tracadie Bay Watershed Association (WRTBWA) (2016-2019). No anoxic events have been recorded in Tracadie Bay and there have been no fish kills related to run-off in the watershed. Sediment laden run-off (red water) events were recently reported to be frequent by the WRTBWA. Some high water temperatures have been recorded in small eastern tributaries of the bay by WRTBWA.

The watershed used for this assessment has been drawn to contain the drainage area of the Tracadie Bay estuary without the Winter River. It has 3 subwatersheds (Black River, Kellys Point, Pipers Creek) which would all have water quality in the Good category if considered separately.

Other Information

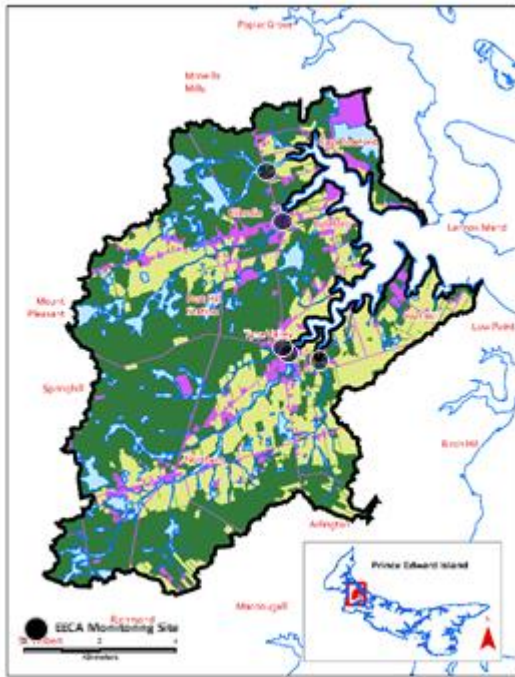
If you have any questions about water quality in this or any other watershed in P.E.I., please contact the provincial Department of Environment, Energy and Climate Action at 1-866-368-5044 and/or [the local community watershed group](#). The Department is working with a local community group, the Winter River/Tracadie Bay Watershed Association, to protect water quality in the Tracadie Bay watershed.

View how the Water Quality Score is calculated [here](#). View the data used for this calculation [here](#).

View or download the available raw water quality monitoring data PEI Department of Environment, Energy and Climate Action [here](#).

Return to the list of watersheds [here](#).

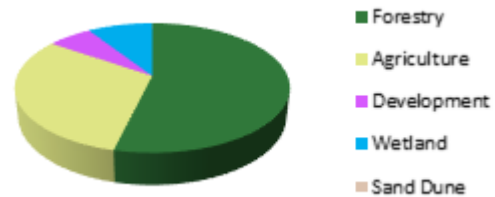
Trout / Bideford River Map



Water Quality Score



Land Use



Watershed Area
85.05 km²

Status

The Trout River/ Bideford River watershed has **Good** water quality. The measured watershed nitrate concentration is 0.7 mg N/l which is in the low range for PEI. This result covers about 73% of the watershed and is from stream sampling data collected by the Department Environment, Energy and Climate Action (2008- 2010, 2014, 2017). No anoxic events have been documented in the Trout River/Bideford River estuary in the last 5 years (2015-2019) and no fish kills have been documented in the watershed in the last 10 years (2010-2019). Sediment laden run-off (red water) events were recently reported to be infrequent by the Lot 11 and Area Watershed Management Group. A water quality concern is the release of peat to the estuary from a local mining facility.

The watershed used for this assessment has been drawn to contain the drainage area of the entire Trout / Bideford River estuary. It has 2 subwatersheds which would have water quality in the Good (Trout River – Tyne Valley) to Excellent (Bideford River) category if considered separately.

Other Information

If you have any questions about water quality in this or any other watershed in P.E.I., please contact the provincial Department of Environment, Energy and Climate Action at 1-866-368-5044 and/or the [local community watershed group](#). The Department is working with two local community groups, the Lot 11

and Area Watershed Management Group and the Richmond Bay Watershed Association, to address water quality issues in the Trout River/Bideford River watershed.

View how the Water Quality Score is calculated [here](#). View the data used for this calculation [here](#).

View or download the available raw water quality monitoring data from the PEI Department of Environment, Energy and Climate Action [here](#).

Return to the list of watersheds [here](#).

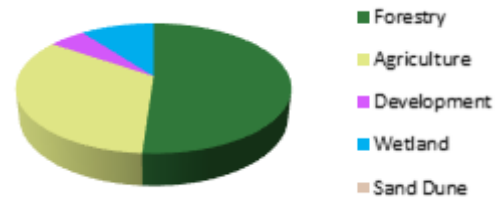
Trout / Foxley River Map



Water Quality Score



Land Use



Watershed Area
149.66 km²

Status

The Trout River/Foxley River watershed has **Fair** water quality. The measured watershed nitrate concentration is 1.6 mg N/l which is in the moderate range for PEI. This result covers 58% of the watershed and is from stream sampling data collected by the Department of Environment, Energy and Climate Action (2006, 2008-2010, 2012-2014, 2017). Anoxic events have been reported in the Trout River/Foxley River estuary 2 (2015-2016) of the last 5 years and 3 (2011-2013) fish kills related to run-off have been documented in the last 10 years. Sediment laden run-off (red water) events were recently reported to be infrequent by Trout Unlimited Prince County Branch. The average groundwater nitrate concentration is > 3 mg/l.

The watershed used for this assessment has been drawn to contain the drainage area of the entire Trout / Foxley River estuary. It has 2 subwatersheds which would have water quality in the Fair (Trout River – Roxbury) to Good (Foxley River) category if considered separately.

Other Information

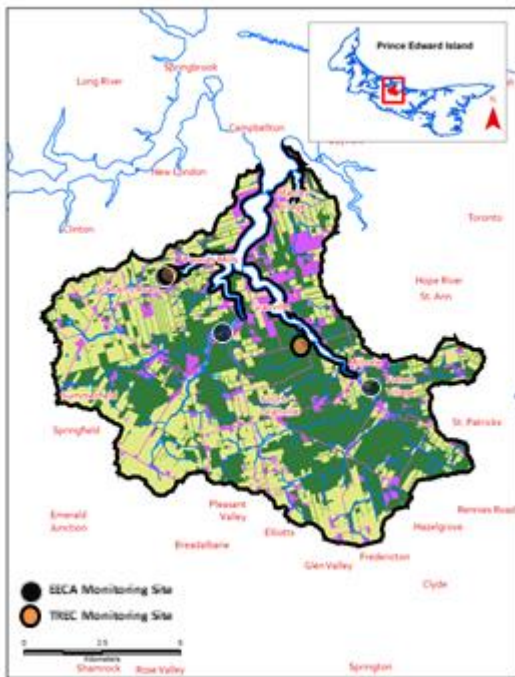
If you have any questions about water quality in this or any other watershed in P.E.I., please contact the provincial Department of Environment, Energy and Climate Action at 1-866-368-5044 and/or the [local community watershed group](#). The Department is working with a local community group, Trout Unlimited Prince County Branch, to address water quality issues in the Trout / Foxley River watershed.

View how the Water Quality Score is calculated [here](#). View the data used for this calculation [here](#).

View or download the available raw water quality monitoring data from the PEI Department of Environment, Energy and Climate Action [here](#).

Return to the list of watersheds [here](#).

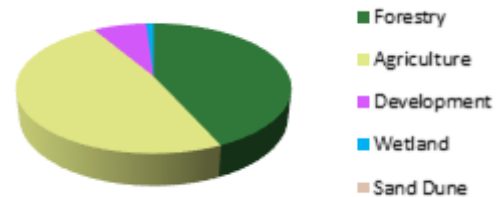
Trout /Stanley River Map



Water Quality Score



Land Use



Watershed Area
92.22 km²

Status

The Trout River/Stanley River watershed has **Fair** water quality. The measured watershed nitrate concentration is 1.7 mg N/l which is in the moderate range for PEI. This result is from stream sampling carried out by the Department of Environment, Energy and Climate Action (2013, 2015, 2018) and the Trout River Enhancement Committee (TREC) (2014, 2016-2017, 2019). The Trout/Stanley River estuary has had anoxic events in each of the last 5 years (2015-2019) but there have been no fish kills related to run-off documented in the watershed. Sediment laden run-off (red water) events were recently reported to be frequent by TREC.

The watershed used for this assessment has been drawn to contain the drainage area of the entire Trout / Stanley River estuary. It has 3 subwatersheds which would have water quality in the Fair (Granville Creek, Founds Fiver) to Good (Trout River - Millvale) categories if considered separately.

Other Information

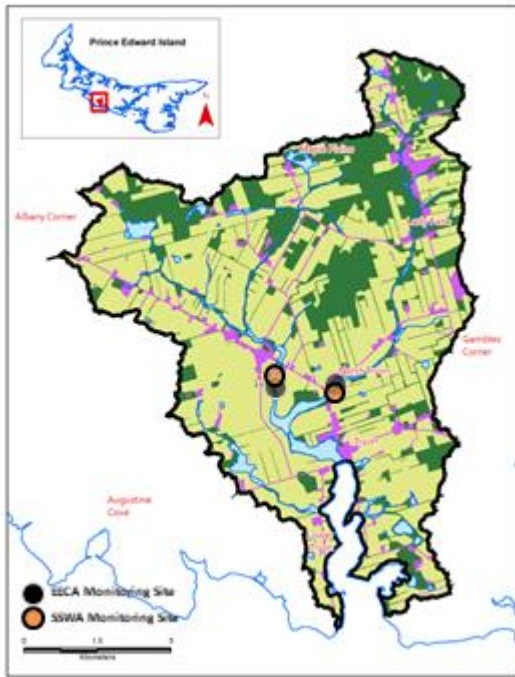
If you have any questions about water quality in this or any other watershed in P.E.I., please contact the provincial Department of Environment, Energy and Climate Action at 1-866-368-5044 and/or the [local community watershed group](#). The Department is working with a local community group, the Trout River Environmental Committee, to address water quality issues in the Trout/ Stanley River watershed.

View how the Water Quality Score is calculated [here](#). View the data used for this calculation [here](#).

View or download the available raw water quality monitoring data from the PEI Department of Environment, Energy and Climate Action [here](#).

Return to the list of watersheds [here](#).

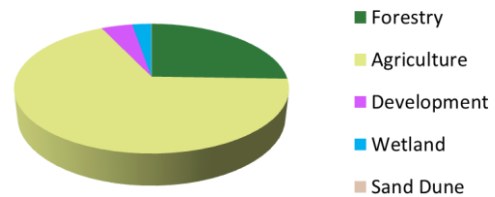
Tryon River Map



Water Quality Score



Land Use



Watershed Area
52.49 km²

Status

The Tryon River watershed has **Fair** water quality. The measured nitrate concentration is 3.9 mg N/l which is in the high range for PEI. This result covers about 69% of the watershed and is from stream sampling data collected by the Department of Environment, Energy and Climate Action (2018) and the South Shore Watershed Association (SSWA) (2017-2019). Anoxic events have never been reported in the Tryon River estuary and there have been no run-off related fish kills in the last 10 years (2010-2019). Recent expert opinion is that sediment laden (red water) events are very frequent. The average groundwater nitrate concentration in the watershed is above 3 mg N/l.

Other Information

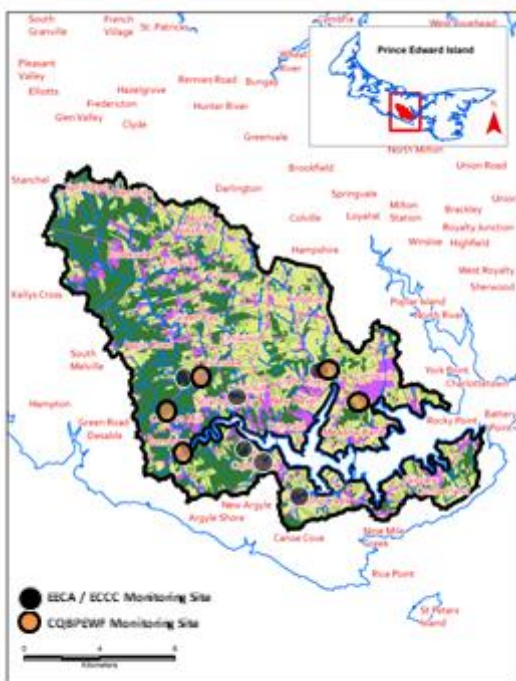
If you have any questions about water quality in this or any other watershed in P.E.I., please contact the provincial Department of Environment, Energy and Climate Action at 1-866-368-5044 and/or the [local community watershed group](#). The Department is working with a local community group, the South Shore Watershed Association Inc., to address water quality issues in the Tryon River watershed.

View how the Water Quality Score is calculated [here](#). View the data used for this calculation [here](#).

View or download the available raw water quality monitoring data from the PEI Department of Environment, Energy and Climate Action [here](#).

Return to the list of watersheds [here](#).

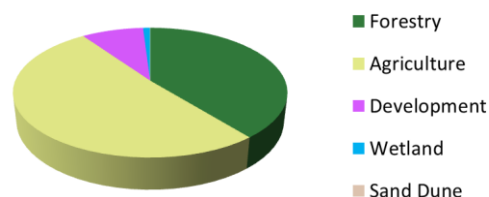
West River Map



Water Quality Score



Land Use



Watershed Area
224.60 km²

Status

The West River watershed has **Fair** water quality. The measured watershed nitrate concentration is 1.4 mg N/l which is in the low range for PEI. This result covers 69% of the watershed and is from stream sampling data collected by the Department of Environment, Energy and Climate Action (2005-2009, 2012-2013, 2017-2019) and the Central Queens County Branch of the PEI Wildlife Federation (CQBPEIWF) (2012-2017, 2019). Two fish kills related to run-off were documented in the watershed in the last 10 years (2016 and 2017). Sediment laden run-off (red water) events are reported to occur very frequently in parts of the watershed by the CQBPEIWF. The average groundwater nitrate concentration is above 3 mg/l in some parts of the watershed. Another concern is that researchers have identified that low light levels due to turbid water is having a negative effect on the growth of macroalgae and marine plants in the estuary. The watershed used for this assessment has been drawn to contain the drainage area of the entire West River estuary. It has 10 subwatersheds which would have water quality in the Fair (Clyde River, Hyde Creek) to Good (Fairview, Long Creek, MacLeods Creek, MacLaughlins Creek, MacFaydens Creek, West River, Churchill, McPhee Creek) categories if considered separately.

Other Information

If you have any questions about water quality in this or any other watershed in P.E.I., please contact the provincial Department of Environment, Energy and Climate Action at 1-866-368-5044 and/or the [local community watershed group](#). The Department is working with a local community group, the Central

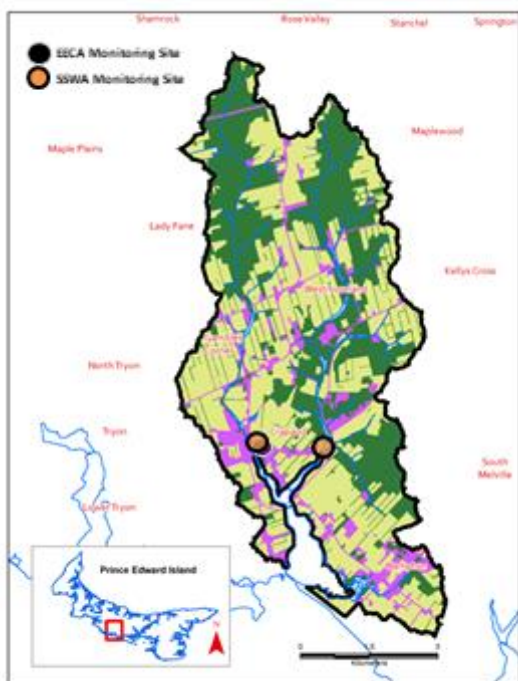
Queens Branch of the PEI Wildlife Federation, to address water quality issues in the West River watershed.

View how the Water Quality Score is calculated [here](#). View the data used for this calculation [here](#).

View or download the available raw water quality monitoring data from the PEI Department of Environment, Energy and Climate Action [here](#).

Return to the list of watersheds [here](#).

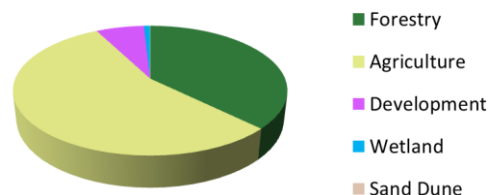
Westmoreland River Map



Water Quality Score



Land Use



Watershed Area
44.61 km²

Status

The Westmoreland River watershed has **Good** water quality. The measured watershed nitrate concentration is 2.8 mg N/l, which is in the moderate range for PEI. This result covers about 79% of the watershed and is from stream sampling data collected by the Department of Environment, Energy and Climate Action (2015, 2018) and the South Shore Watershed Association (SSWA)(2016-2018). Anoxic events have never been reported in the Westmoreland River and no fish kills related to run-off have been documented in the watershed in the last 10 years (2010-2019). Recent expert opinion is that sediment laden run-off (red water) events occur frequently in the watershed. The average groundwater nitrate concentration in the watershed is above 3 mg N/l.

Other Information

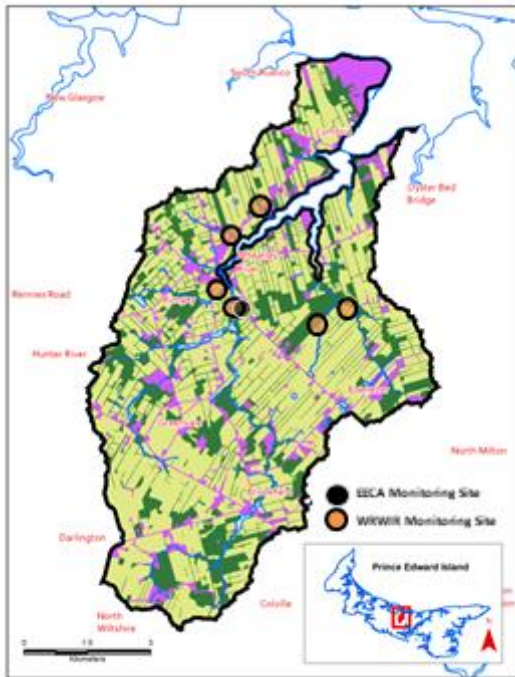
If you have any questions about water quality in this or any other watershed in P.E.I., please contact the provincial Department of Environment, Energy and Climate Action at 1-866-368-5044 and/or the [local community watershed group](#). The Department is working with a local community group, the South Shore Watershed Association Inc., to address water quality issues in the Westmoreland River watershed.

View how the Water Quality Score is calculated [here](#). View the data used for this calculation [here](#).

View or download the available raw water quality monitoring data from the PEI Department of Environment, Energy and Climate Action [here](#).

Return to the list of watersheds [here](#).

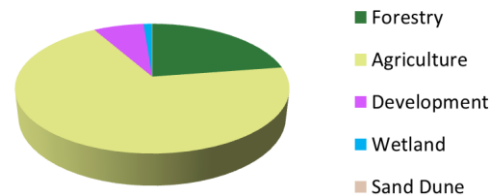
Wheatley River Map



Water Quality Score



Land Use



Watershed Area
63.69 km²

Status

The Wheatley River watershed has **Fair** water quality. The measured watershed nitrate concentration is 2.9 mg N/l which is in the moderate range for PEI. This result covers about 69% of the watershed and is from stream sampling data collected by the Department of Environment, Energy and Climate Action (2014) and the Wheatley River Improvement Group (WRIG) (2017-2018). Anoxic events have been recorded in the Wheatley River estuary in each of the last 5 years (2015-2019) but there have been no fish kills related to run-off documented in the watershed. Sediment laden run-off (red water) were recently reported to be frequent by WRIG. The average groundwater nitrate concentration in the watershed is above 3 mg N/l.

Other Information

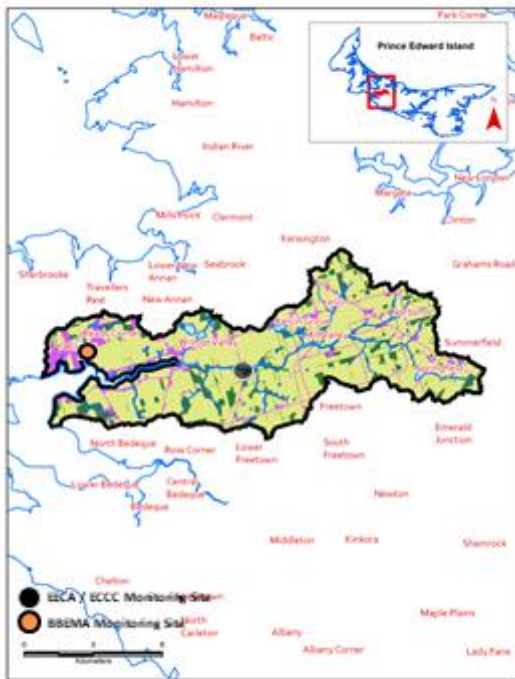
If you have any questions about water quality in this or any other watershed in P.E.I., please contact the provincial Department of Environment, Energy and Climate Action at 1-866-368-5044 and/or the [local community watershed group](#). The Department is working with a local community group, the Wheatley River Improvement Group Inc., to address water quality issues in the Wheatley River watershed.

View how the Water Quality Score is calculated [here](#). View the data used for this calculation [here](#).

View or download the available raw water quality monitoring data from the PEI Department of Environment, Energy and Climate Action [here](#).

Return to the list of watersheds [here](#).

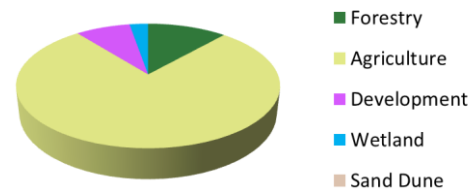
Wilmot River Map



Water Quality Score



Land Use



Watershed Area
82.91 km²

Status

The Wilmot River watershed has **Fair** water quality. The measured watershed nitrate concentration is 6.1 mg N/l which is in the very high range for PEI. This result covers about 61% of the watershed and is from stream sampling data collected by the Department of Environment, Energy and Climate Action (2017-2019), the Department of Environment and Climate Change Canada (2017-2019) and the Bedeque Bay Environmental Management Committee (2014). A single anoxic event was recorded in the Wilmot River estuary in 2018 and no fish kills related to run-off have been documented in the watershed in the last 10 years (2010 - 2019). Recent expert opinion is that sediment laden run-off (red water) events occur very frequently in the watershed.. The average groundwater nitrate concentration is above 5 mg N/l in the watershed.

Other Information

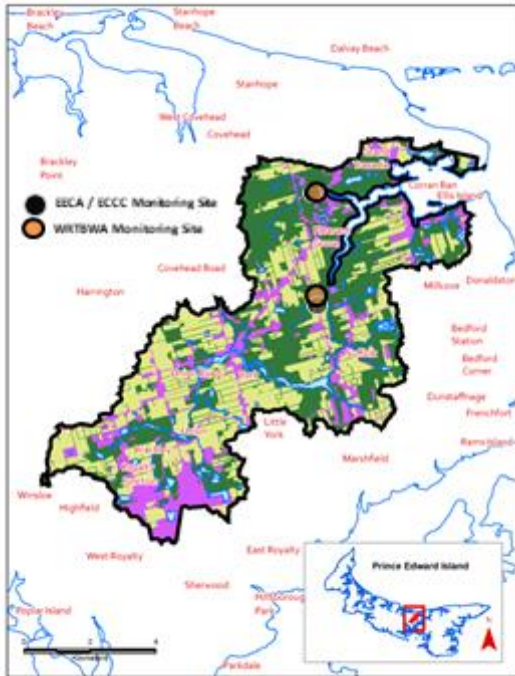
If you have any questions about water quality in this or any other watershed in P.E.I., please contact the provincial Department of Environment, Energy and Climate Action at 1-866-368-5044 and/or the [local community watershed group](#). The Department is working with a local community group, the Bedeque Bay Environmental Management Association, to address water quality issues in the Wilmot River watershed.

View how the Water Quality Score is calculated [here](#). View the data used for this calculation [here](#).

View or download the available raw water quality monitoring data from the PEI Department of Environment, Energy and Climate Action [here](#).

Return to the list of watersheds [here](#).

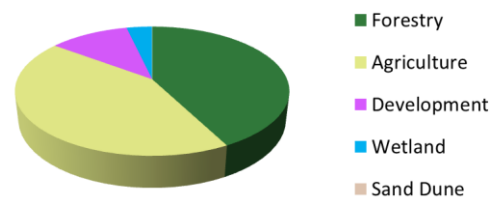
Winter River Map



Water Quality Score



Land Use



Watershed Area
70.54 km²

Status

The Winter River watershed has **Fair** water quality. The measured watershed nitrate concentration is 1.5 mg N/l which is in the low range for PEI. This result covers 75% of the watershed area and is from stream sampling data collected by the Department Environment, Energy and Climate Action (2016, 2019) and the Winter River Tracadie Bay Watershed Association (WRTBWA) (2016-2018). Anoxic events have been recorded in the Winter River estuary in each of the last 5 years (2015-2019), but no fish kills related to run-off have been recorded in the watershed. Sediment laden run-off (red water) events were recently reported to be frequent by the WRTBWA. Other concerns include elevated summer water temperature and low dissolved oxygen in ponds and upper tributaries. The average groundwater nitrate concentration in the watershed is above 3 mg N/l.

Other Information

If you have any questions about water quality in this or any other watershed in P.E.I., please contact the provincial Department of Environment, Energy and Climate Action at 1-866-368-5044 and/or the [local community watershed group](#). The Department is working with a local community group, the Winter River/Tracadie Bay Watershed Association, to address water quality issues in the Winter River watershed.

View how the Water Quality Score is calculated [here](#). View the data used for this calculation [here](#).

View or download the available raw water quality monitoring data from the PEI Department of Environment, Energy and Climate Action [here](#).

Return to the list of watersheds [here](#).