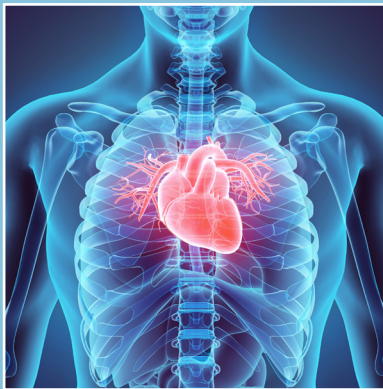


BIO521A



SCIENCE

Grade 11 Biology



Curriculum Guide

Acknowledgements

The Prince Edward Island Department of Education and Early Years (DEEY) gratefully acknowledges the contributions of the following committee in the development of the Prince Edward Island Biology 521A and Biology 621A Curriculum Guides.

Biology Curriculum Development Committee

Charlie Trainor - Montague Regional High School

Chris Higginbotham - Three Oaks Senior High

Dylan Voth - Kinkora Regional High School

Erin Costello - Colonel Gray High School

Jason Campbell - Bluefield High School

Karen Power- Souris Regional School

Kevin Bustard - Charlottetown Rural High School

Lisa Paugh - Westisle Composite High

Louis Andrew - Kensington Intermediate Senior High

Tracy McGee - Morell Regional High School

Jonathan Hayes - Secondary Science Innovation Leader, DEEY

The Prince Edward Island Department of Education and Early Years would also like to gratefully acknowledge the contributions of the following individuals.

Dr. Michael Gibson (Holland College - Bioscience Technology Learning Manager) for sharing his advice and expertise.

Kim McBurney (former Secondary Science Innovation Leader, DEEY) for her efforts in the development of the science outcomes framework and associated content.

Prince Edward Island
Department of Education and Early Years
250 Water Street, Suite 101
Summerside, Prince Edward Island, Canada, C1N 1B6
Tel: (902) 438-4130. Fax: (902) 438 4062

Implemented 2022

Table of Contents

Acknowledgements	i
Table of Contents	ii
List of Tables and Figures	iv
Introduction	1
Vision	1
Aim	2
Attitudes	2
Purpose of Curriculum Guide	2
Curriculum Design	3
Essential Graduation Competencies (EGC's)	3
Essential Graduation Competencies—Definitions	4
Foundations of Scientific Literacy	7
General Curriculum Outcomes	7
Specific Curriculum Outcomes	8
Achievement Indicators (AIs)	8
Elaborations	8
Bloom's Taxonomy	9
Cognitive Process Dimension	9
SCO Structure	10
Curriculum Guide Layout	10
Assessment and Evaluation	12
Science Learning Environment	13
Social and Emotional Learning (SEL)	13
Supporting English as an Additional Language (EAL) Learners	14
STEAM Problem-Solving Processes	15
Interdisciplinary Skills	17
Pathway to Scientific Literacy	20
Foundations of Scientific Literacy	22
Overview	22
Nature of Science	23
Procedural Knowledge	26
Content Knowledge	32
Decisions and Perspectives	35

Table of Contents

Biology 521A Course Overview	39
Course Description	39
Outcome Summary	40
Assessment Framework	41
Reporting Structure	41
Nature of Science	42
NoS 1	42
Decisions and Perspectives	44
DP 1	44
Procedural Knowledge	46
PK1	46
PK 2	48
PK 3	50
PK 4	52
PK 5	54
PK 6	56
Content Knowledge	58
CK 1.1	58
CK 1.2	60
CK 1.3	62
CK 2.1	64
CK 2.2	66
CK 2.3	68
CK 2.4	70
CK 2.5	72
CK 2.6	74
CK 2.7	76
CK 2.8	78
CK 3	80
Appendix A: The Scientific Continuum	82
Appendix B: Literacy Strategies that Support Science Learning	84
References	85

List of Tables and Figures

List of Tables

Table 1. Bloom’s Taxonomy—Cognitive Process Dimension	9
Table 2. Details of Curriculum Guide Layout	10
Table 3. STEAM Problem-solving.	15
Table 4. Stages of the Scientific Inquiry Process and Selected Skills	29
Table 5. Summary of Curriculum Outcomes	40
Table 6. Assessment Framework for BIO521A.	41
Table 7. Types of Error	51
Table 8. Claim, Reasoning, and Evidence Writing Frame Sample.	53

List of Figures

Figure 1. Essential Graduation Competencies	3
Figure 2. Nature of Science	7
Figure 3. Generic Problem Solving Process.	16
Figure 4. Comparison of STEAM Problem-Solving Processes	16
Figure 5. The nature of language Arts	19
Figure 6. Pathways to Scientific Literacy	20
Figure 7. How Science Works (University of California Museum of Paleontology 2016)	22
Figure 8. Scientific Reasoning	24
Figure 9. Classification of Scientific Studies. Adapted from Oleckno, 2002.	27
Figure 10. Scientific Inquiry Process Wheel	28
Figure 11. Quantum Mechanical Model of the Atom	30
Figure 12. Energy Flow in a Food Web (Perry 2019)	30
Figure 13. Stock and Flow Conceptual Model	31

Introduction

The pan-Canadian Common Framework of Science Learning Outcomes K to 12 (1997) assisted in standardizing science education across Canada. This framework was used to develop the Foundation for the Atlantic Canada Science Curriculum (1998). Sections of the Atlantic Canada Science Foundation Document have been incorporated into this revision and augmented with ideas and standards presented in newer Canadian provincial science curricula and recent literature concerning science education. This includes the National Research Council's Framework for K–12 Science Education: Practices, Cross-Cutting Concepts, and Core Ideas (2012), and the resulting Next Generation Science Standards: For States, By States (2013).

The revised science curriculum is designed to enable students to work towards the achievement of six, cross-curricular essential graduation competencies (EGCs) as defined by the Council of Atlantic Ministers of Education and Training (CAMET) in The Atlantic Canada Framework for Essential Graduation Competencies (2015). To facilitate this shift to competency-based education, a number of significant changes have been incorporated in this guide: 1) specific curriculum outcomes (SCOs) have been reduced and targeted toward EGCs; 2) greater emphasis has been placed on processes and skills; and 3) achievement indicators (AIs) have been included to clarify the “depth and breadth” of SCOs.

Vision

The Prince Edward Island science curriculum is guided by the vision that all students will have the opportunity to develop scientific literacy. Scientific literacy is the set of knowledge, skills, and attitudes that enables an individual to inquire, problem solve, critically evaluate and make well-informed decisions, and maintain a sense of wonder about the world around them.

Scientific Literacy

As we progress through the 21st century, humans have created a world that confronts us daily with issues of a scientific and technological nature: global warming, decreasing sources of clean water, cloning, multi-drug-resistant bacteria, evolving viruses, nanotechnology, genetically modified organisms (GMOs), waste disposal, new sources of energy, dependency on electronic devices, suburbanization, and new frontiers in space exploration. In order to play an active role in this world of change, individuals must have a degree of scientific literacy that enables them to sort through valid and invalid claims and understand the implications of new developments.

Scientifically literate people have a fundamental knowledge about the natural world around them and an understanding of the scientific processes that were used to obtain such knowledge. They are aware that knowing something scientifically requires evidence that passes through a rigorous process of review, evaluation, and support by a global community of experts, and that this process extends over time. They recognize our understanding of the natural world is not static but constantly evolving; what we “know” today may change as new concepts and technologies are developed. Whether or not they work in a science-related field, scientifically literate people are able to make informed personal, political, economic, and ethical decisions regarding science and technology matters by evaluating evidence, and are able to defend their decisions using rational reasoning.

Aim

The Prince Edward Island science curriculum aims to facilitate the development of scientifically literate students by providing opportunities to develop and apply an understanding of the nature of science to evaluate claims related to science; develop skills and strategies required to perform scientific inquiry and apply science to solve problems; work collaboratively to generate and explore ideas, and carry out investigations; reason scientifically; develop foundational understanding of scientific concepts that explain the natural and material world; communicate scientific information effectively; evaluate the personal, societal, environmental, and ethical implications of the applications of science and technology from a variety of perspectives.

Attitudes

Positive attitudes towards science will also be fostered in our learners. Attitudes are generalized aspects of behaviour that can be modelled by adults and encouraged by selective approval. Positive attitudes include, but are not limited to

- exhibiting a sense of wonder and curiosity about scientific and technological endeavours;
- engaging and persevering in science tasks and projects;
- demonstrating resilience;
- showing concern for safety during inquiry activities;
- exhibiting collaborative behaviours;
- valuing the role of science and technology in our understanding of the world;
- demonstrating an appreciation of the nature of science;
- demonstrating respect and sensitivity in maintaining a balance between the needs of humans and the environment; and
- being open-minded and projecting beyond the personal consequences of proposed actions.

Purpose of Curriculum Guide

The overall purpose of this curriculum guide is to advance social studies education through teaching and learning, and, at the same time, recognize and validate effective practices that already exist in many classrooms. More specifically, this curriculum guide

- provides detailed curriculum outcomes to which educators and others can refer to when making decisions concerning learning experiences, instructional techniques, and assessment strategies for the social studies program;
- informs both educators and members of the general public about the philosophy and scope of social studies education for the senior high school level in Prince Edward Island;
- promotes the effective learning and teaching of social studies for students.

Essential Graduation Competencies (EGC's)

Curriculum is designed to articulate what students are expected to know and be able to do by the time they graduate from high school. The PEI Department of Education and Lifelong Learning designs curriculum that is based on the Atlantic Canada Framework for Essential Graduation Competencies released by the Council of Atlantic Ministers of Education and Training (CAMET 2015).

Competencies articulate the interrelated sets of attitudes, skills, and knowledge—beyond foundational literacy and numeracy—that prepare learners to successfully participate in lifelong learning and life/work transitions. They are cross-curricular in nature and provide opportunities for interdisciplinary learning. Six competencies have been identified: citizenship, communication, personal-career development, creativity and innovation, critical thinking, and technological fluency (Figure 1). Achievement of the essential graduation competencies (EGCs) will be addressed through the assessment and evaluation of curriculum outcomes developed for individual courses and programs.

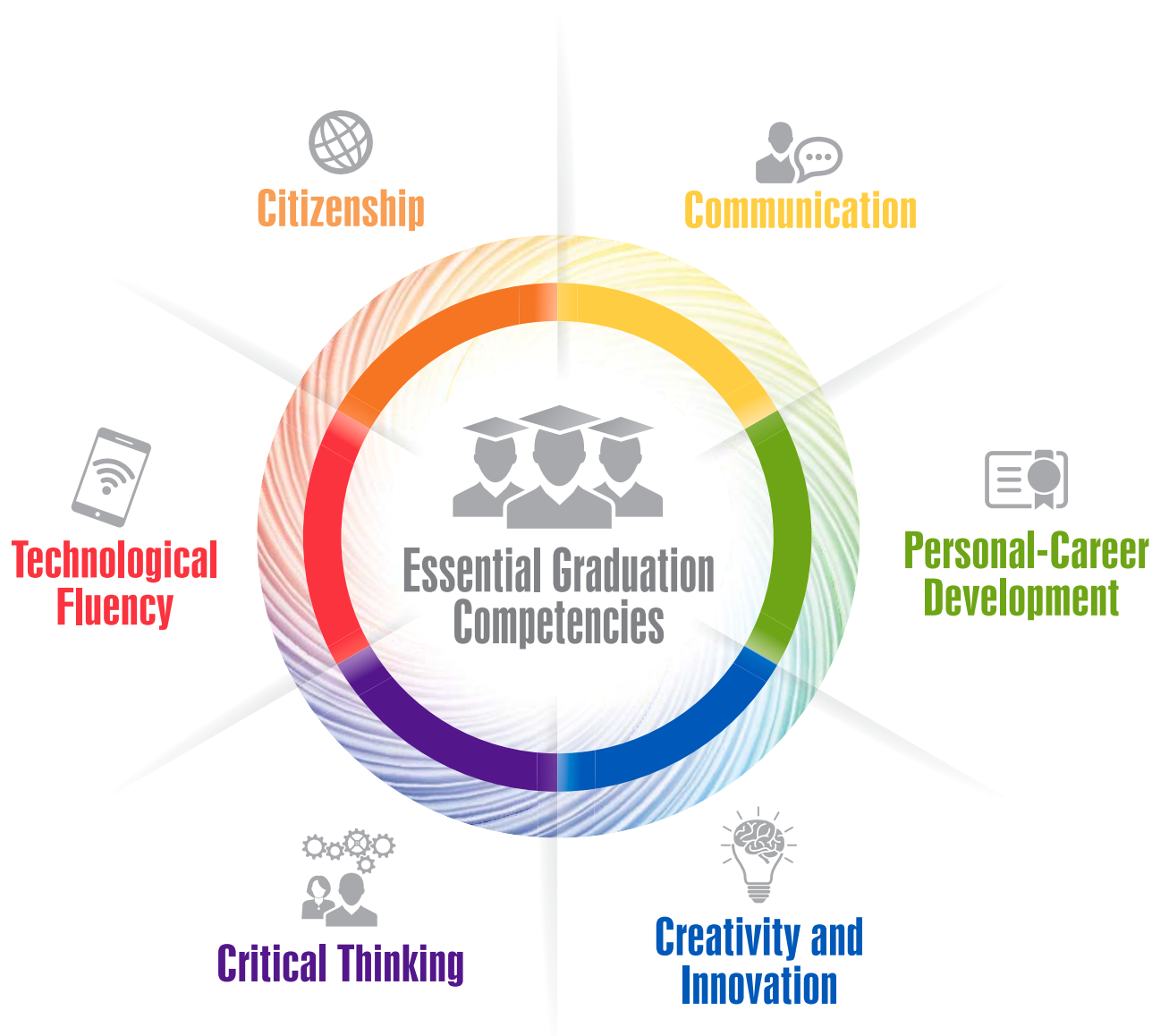


Figure 1. *Essential Graduation Competencies*

Essential Graduation Competencies—Definitions

Critical Thinking



Learners are expected to analyse and evaluate evidence, arguments, and ideas using various types of reasoning and systems thinking to inquire, make decisions, and solve problems. They reflect critically on thinking processes.

Learners are expected to

- use critical thinking skills to inquire, make decisions, and solve problems;
- recognize that critical thinking is purposeful;
- demonstrate curiosity, inquisitiveness, creativity, flexibility, persistence, open- and fair-mindedness, tolerance for ambiguity, and suspension of judgment;
- ask powerful questions which support inquiry, decision-making, and problem solving;
- acquire, interpret, and synthesize relevant and reliable information from a variety of sources;
- analyse and evaluate evidence, arguments, and ideas;
- use various types of evidence, reasoning, and strategies to draw conclusions, make decisions, and solve problems;
- reflect critically on thinking processes used and acknowledge assumptions;
- effectively communicate ideas, conclusions, decisions, and solutions; and
- value the ideas and contributions of others who hold diverse points of view.

Technological Fluency



Learners are expected to use and apply technology to collaborate, communicate, create, innovate, learn, and solve problems. They use technology in a legal, safe, and ethically responsible manner.

Learners are expected to

- recognize that technology encompasses a range of learning tools and contexts;
- use and interact with technology to create new knowledge;
- apply digital technology to gather, filter, organize, evaluate, use, adapt, create, and share information;
- select and use technology to impact and advance one another; and
- adopt, adapt, and apply technology efficiently, effectively, and productively.

Citizenship



Learners are expected to contribute to the quality and sustainability of their environment, communities, and society. They analyse cultural, economic, environmental, and social issues; make decisions and judgments; and solve problems and act as stewards in a local, national, and global context.

Learners are expected to

- recognize the principles and actions of citizens in just, pluralistic, and democratic societies;
- demonstrate the disposition and skills necessary for effective citizenship;
- consider possible consequences of decisions, judgment, and solutions to problems;
- participate in civic activities that support and promote social and cultural diversity and cohesion;
- promote and protect human rights and equity;
- appreciate the complexity and interconnectedness of factors in analysing issues; and
- demonstrate understanding of sustainable development.

Communication



Learners are expected to express themselves and interpret effectively through a variety of media. They participate in critical dialogue, listen, read, view, and create for information, enrichment, and enjoyment.

Learners are expected to

- listen and interact purposefully and respectfully in formal and informal contexts;
- engage in constructive and critical dialogue;
- understand, interpret, and respond to thoughts, ideas, and emotions presented through multiple media forms;
- express ideas, information, learnings, perceptions, and feelings through multiple media forms, considering purpose and audience;
- assess the effectiveness of communication and critically reflect on intended purpose, audience, and choice of media; and
- analyse the impact of information and communication technology.

Personal-Career Development



Learners are expected to become self-aware and self-directed individuals who set and pursue goals. They understand and appreciate how culture contributes to work and personal life roles. They make thoughtful decisions regarding health and wellness, and career pathways.

Learners are expected to

- connect learning to personal and career development;
- demonstrate behaviours that contribute to the well-being of self and others;
- build healthy personal and work relationships;
- establish skills and habits to pursue physical, spiritual, mental, and emotional well-being;
- develop strategies to manage career balance and wellness;
- create and implement a personal, education, career, and financial plan to support transitions and achievement of personal, education, and career goals; and
- demonstrate preparedness to learn and work individually, cooperatively, and collaboratively in diverse, evolving environments.

Creativity and Innovation



Learners are expected to demonstrate openness to new experiences; to engage in creative processes; to make unexpected connections; and to generate new and dynamic ideas, techniques, and products. They value aesthetic expression and appreciate the creative and innovative work of others.

Learners are expected to

- gather information through all senses to imagine, create, and innovate;
- develop and apply creative abilities to communicate ideas, perceptions, and feelings;
- take responsible risk, accept critical feedback, reflect, and learn from trial and error;
- think divergently, and embrace complexity and ambiguity;
- recognize that creative processes are vital to innovation;
- use creation techniques to generate innovations;
- collaborate to create and innovate;
- critically reflect on creative and innovative works and processes; and
- value the contribution of creativity and innovation.

Foundations of Scientific Literacy

PEI science curriculum is based upon four foundations deemed essential to scientific literacy. Three of these components—Procedural Knowledge, Content Knowledge, and Decisions and Perspectives—reflect 1) the processes and skills required in the development and application of scientific knowledge, 2) the resulting body of knowledge, and 3) the need for critical thinking about the application of science developments from a variety of perspectives and with consideration of ethics. Central to these three foundations is the Nature of Science, which addresses epistemic knowledge or the principles underlying science as a way of knowing. More detail relating to these concepts can be found in the section “Foundations of Scientific Literacy” p.22. The foundations of science literacy support and are integrated with the six essential graduation competencies.



General Curriculum Outcomes

Figure 2. *Nature of Science*

General curriculum outcomes statements articulate what students are expected to know and be able to do upon completion of study in Science education.

Nature of Science (NoS)

Students will comprehend science as a way of knowing about the natural world that uses valid, empirical evidence and logical reasoning. They will recognize that scientific knowledge is dynamic and probabilistic in its nature, evolving as new evidence and ideas are presented, and accepted by a community of scientists only after rigorous review.

Procedural Knowledge (PK)

Students will understand and become proficient using skills, processes, and practices required for scientific inquiry and the application of science. This includes the skills necessary for reading comprehension, argumentation, communication, collaboration, computational thinking, mathematical analysis, and technological fluency.

Content Knowledge (CK)

Students will integrate knowledge and understanding of concepts related to life sciences, physical sciences, Earth and space sciences, and their real-world applications. They will think critically about these understandings to extend their knowledge of themselves and the world around them.

Decisions and Perspectives (DP)

Students will evaluate personal, societal, environmental, ethical, and sustainability issues relating to the applications of science and technology from multiple perspectives. This includes exploring science-related career pathways.

Specific Curriculum Outcomes

Specific curriculum outcomes (SCOs) identify what students are expected to know and be able to do for a particular course. They provide a focus for instruction in terms of measurable or observable student performance and are the basis for the assessment of student achievement across the province. PEI specific curriculum outcomes are developed with consideration of Bloom's Taxonomy of Learning and the Essential Graduation Competencies.

SCOs will begin with the phrase—Learners are expected to... .

Achievement Indicators (AIs)

Each specific curriculum outcome is described by a set of achievement indicators that support, define, and demonstrate the depth and breadth of the corresponding SCO. Taken together as a set, AIs support the SCO in defining specific levels of knowledge acquired, skills applied, or attitudes demonstrated by a student for that particular outcome.

It is important to note that AIs are not a prescriptive checklist to be taught in a sequential manner, are not a prioritized list of instructional activities, and are not a set of prescribed assessment items. Achievement indicators provide clarity and understanding to ensure instructional design is aligned to the SCO.

The set of achievement indicators for a given outcome begins with the phrase—Learners who have achieved this outcome should be able to... .

Elaborations

An elaboration provides a fuller description of the SCO and the instructional intent behind it. It provides a narrative for the SCO, gives background information where possible, and offers a broader context to help teachers gain a deeper understanding of the scope of the SCO. This may also include suggestions and/or reference supporting resources that may be helpful for instruction and assessment of the SCO.

Bloom's Taxonomy

Bloom's Taxonomy was published in 1956 as a framework for the purpose of classifying expectations for student learning as indicated by educational outcomes. David Krathwohl's 2002 revision of this taxonomy expands on the original work by defining the relationship between the cognitive process dimension—how we expect students to come to know and think about the outcome—and the knowledge dimension—the category of knowledge expressed by the outcome.

A full understanding of the relationship between the cognitive process and knowledge dimensions of Bloom's Taxonomy will serve students, teachers, and administrators by

- providing a framework for developing the specific curriculum outcomes (SCOs) for a particular course;
- identifying the type of knowledge and cognitive target of the outcome;
- providing a means for the alignment of specific curriculum outcomes with instructional activities and assessments; and
- providing a common language about the curriculum outcomes within all subjects to facilitate communication.

Cognitive Process Dimension

The cognitive process dimension classifies six types of cognition that learners may be expected to demonstrate or use as they work towards proficiency of any given specific curriculum outcome. The verb(s) that begins a specific curriculum outcome identifies the cognitive process dimension.

Table 1. Bloom's Taxonomy—Cognitive Process Dimension

Category	Description
Remembering	Retrieve, recall, and/or recognize specific information or knowledge from memory.
Understanding	Construct meaning from different sources and types of information, and explain ideas and concepts.
Applying	Implement or apply information to complete a task, carry out a procedure through executing or implementing knowledge.
Analysing	Break information into component parts and determine how the parts relate or interrelate to one another or to an overall structure or purpose.
Evaluating	Justify a decision or course of action, problem solve, or select materials and/or methods based on criteria and standards through checking and critiquing.
Creating	Form a coherent functional whole by skillfully combining elements together and generating new knowledge to guide the execution of the work.

SCO Structure

Examining the structure of a specific curriculum outcome is necessary to fully understand its intent prior to planning instruction and assessment. The verb(s) in the outcome relates to the expected level and type of thinking (cognitive process). A noun or noun phrase communicates the type of knowledge (i.e., factual, conceptual, procedural, or metacognitive) that is the focus of the outcome.



verb: explain
cognitive process: UNDERSTANDING

CK1.3 explain the processes involved in human reproduction and development.

Curriculum Guide Layout

The curriculum guide layout is designed to highlight the critical elements/features of the provincial curriculum required for a given course.

Table 2. Details of Curriculum Guide Layout

Feature	Description
Unit Name	Appears in the upper left hand corner.
SCO Block	Appears in the coloured box; contains the cognitive process level
AI List	Appears in the body of the page immediately following the SCO.
EGC Map	Appears at the bottom of the page.

Curriculum Design

Name of Curriculum Unit

Specific Curriculum Outcomes (SCOs)

NATURE OF SCIENCE

Specific curriculum outcome (SCO)

NoS 1	Learners are expected to ...					
	evaluate the development and use of a technology related to Biology.					
	Remembering	Understanding	Applying	Analysing	Evaluating	Creating

Achievement Indicators

Learners who have achieved this outcome should be able to ...

- a analyse the design and function of a technology using scientific principles;
- b describe examples where technologies were developed based on scientific understandings;
- c analyse why and how a particular technology was developed and improved over time;
- d analyse society's influence on scientific and technological endeavors;
- e identify various constraints that result in trade-offs during the development of technologies; and
- f explain how emerging technologies revolutionized thinking in the scientific community.

Cognitive process level for this particular SCO

Set of achievement indicators (AIs) indicating "breadth and depth" of SCO

Essential Graduation Competencies Map

✓ Citizenship	✓ Critical Thinking	Personal-Career Development	Essential Graduation Competencies
Communication	Technological Fluency	Creativity and Innovation	
40	DRAFT (MAY 2023)		GRADE 12 BIOLOGY - BIO621A

Curriculum Design

Assessment and Evaluation

Assessment and evaluation are integral components of the teaching and learning process. They are continuous activities that are planned for and derived from specific curriculum outcomes (SCOs) and should be consistent with instruction. Effectively planned assessment and evaluation improves and guides future instruction. It also promotes learning, builds confidence, and develops students' understanding of themselves as learners.

Assessment is the process of gathering evidence about student learning. Assessments need to be reflective of the cognitive process and type of knowledge indicated by the SCO ("Bloom's Taxonomy" on page 9). The achievement indicators inform teachers of the depth and breadth of skills, knowledge, and understandings expected for each SCO.

Assessment has three interrelated purposes:

- assessment for learning to guide and inform instruction (formative)
- assessment as learning to involve students in self-assessment and setting goals for their own learning (formative)
- assessment of learning to determine student progress relative to curriculum outcomes (summative)

Triangulation is a process by which a teacher uses evidence about student learning from three different sources. These sources include conversations, observations, and products. Collecting data from a balance of these sources ensures reliable and valid assessment of student learning.

Evaluation involves analyzing and reflecting upon various forms of evidence of student learning and making judgments or decisions regarding student learning based upon that evidence.

Effective assessment strategies

- must be valid in that they measure what is intended to be measured and are reliable in that they consistently achieve the same results when used again, or similar results with a similar group of students;
- are appropriate for the purpose of instruction and learning strategies used;
- are explicit and communicate to students and parents the expectations and criteria used to determine the level of achievement;
- are comprehensive and enable all students to have diverse and multiple opportunities to demonstrate their learning consistently, independently, and in a range of contexts in everyday instruction;
- accommodate the diverse learning needs and experiences of the students;
- allow for relevant, descriptive, and supportive feedback that gives students clear directions for improvement, and engages students in metacognitive self-assessment and goal setting that can increase their success as learners; and
- assist teachers in selecting appropriate instruction and intervention strategies to promote the gradual release of responsibility of learning.

Students should know what they are expected to learn as designated by SCOs and the criteria that will be used to determine the quality of their achievement.

Assessment must provide opportunities for students to reflect on their progress, evaluate their learning, and set goals for future learning.

Science Learning Environment

Social and Emotional Learning (SEL)

Social and emotional learning is the process through which children and adults acquire and effectively apply the knowledge, attitudes, and skills necessary to understand and manage emotions, set and achieve goals, feel and show empathy for others, establish and maintain positive relationships, and make responsible decisions (Weissberg & Cascarino, 2013).

The benefits of social and emotional learning (SEL) are well-researched. Evidence demonstrates that an education integrated with SEL yields positive outcomes for students, adults, and school communities. These findings include increased social and emotional skills, academic performance, mental wellness, healthy behaviours, school climate and safety, and positive lifetime outcomes (Durlak et al., 2011).

Students will experience a sense of belonging and emotional safety when teachers develop a supportive atmosphere where students feel valued and are encouraged to express their ideas and emotions. While SEL isn't a designated subject like history or math, it must be woven into a school's curriculum and community (Durlak et al., 2011; Wigglesworth et al., 2016). The following five skills provide examples of how social-emotional learning competencies can be incorporated into the curriculum:

Self-Awareness entails the understanding of one's own emotions, personal identity, goals and values. Integrating self-awareness involves planning activities and practices that help students understand and connect with their thoughts, emotions, and strengths and how they influence behaviour;

Self-Management entails skills and attitudes that help students to regulate emotions and behaviours. Integrating self-management involves developing students' organizational skills, resilience, and goal-setting abilities through structured activities, personalized learning plans, and providing consistent feedback;

Social Awareness entails recognizing the perspective of those with the same or different backgrounds and empathizing and feeling compassion. Integrating social awareness involves incorporating diverse perspectives, cultural contexts, and collaboration while encouraging students to understand and appreciate the broader societal implications of the content they are learning;

Relationship Skills entail the tools to establish and maintain healthy relationships and effectively navigate settings with different social norms and demands. Integrating relationship skills involves fostering collaborative projects, encouraging effective communication and teamwork, and enabling students to develop positive interpersonal connections that enhance their learning experience and

Responsible Decision-making entails the knowledge, skills and attitudes to make caring and constructive choices about personal behaviour and social interactions across diverse settings. Integrating responsible decision-making within lessons involves incorporating real-world scenarios, ethical considerations, and critical information analysis to make thoughtful choices.

Supporting English as an Additional Language (EAL) Learners

Multilingual learners add valuable experiences to the classroom. The linguistic knowledge and experiences of English as an additional language (EAL) students can extend the understanding of the linguistic diversity of all students. When the language, prior knowledge, and culture of EAL students are valued, respected, and incorporated into learning, the learning environment is enhanced.

Supportive learning includes classroom practices that affirm cultural values and leverage students' home language and prior knowledge. Making connections to content and language structures in their home language and English is encouraged when possible. It is also essential that EAL students make connections between their learning in English and learning in other curricular areas and use learning contexts in other subjects to practice, reinforce, and extend their language skills. Addressing the demands of the subject area and discussing how different forms, styles, and registers of English are used for various purposes will benefit students. Providing students learning English as an additional language with ample opportunities to use English in communicative ways and designing classroom activities to aid language development through active language use will support their learning.

It's essential to address barriers to equitable instruction and assessment for EAL students. By providing various ways for them to access content, demonstrate learning, and develop language skills, we can ensure their full participation and contribution to the classroom community. This approach not only benefits EAL students but also enhances the overall learning environment.

STEAM Problem-Solving Processes

The acronym STEAM represents Science, Technology, Engineering, Art, and Math. STEAM education is a pedagogical approach which provides students the opportunity to integrate learning associated with these five disciplines while solving meaningful problems.

The original acronym, STEM was introduced in the 1990s by the National Science Foundation. The 'A' was added to STEM in recognition that creative thinking normally associated with art is as necessary as analytical thinking when solving problems in science, engineering, and technology. The ability to think mathematically is also an integral aspect of these three fields.

Problem-solving is an iterative, multi-layered and multi-stepped process that requires flexible thinking patterns (Figure 12). The analytical thinking component involves selecting, gathering, sorting, comparing, and contrasting information. Analytical thinking is convergent thinking which helps to identify and narrow possible solutions. Creative thinking is required to solve broad, open-ended problems that do not have a readily apparent solution and are not single-outcome specific. Creative processes involves divergent thinking or out-of-the-box thinking. A creative thinker may consider solutions that are based on intuition and emotion rather than logic. Creative solutions can also arise from observation, inspiration, and serendipity. STEAM activities are designed to encourage the flexibility to move back and forth between these two cognitive processes. They also support the development of other habits of mind necessary for STEAM such as persistence and resilience.

All five disciplines do not have to be targeted at the same time during a STEAM activity. To obtain the benefit of STEAM-based instruction, the problem presented should not have a readily apparent solution or be single outcome specific. The problem should be open-ended and designed in a way that the learner has more than one possible path to the solution. Productive struggle and reflection should be encouraged.

Table 3. STEAM Problem-solving

Problem-Solving Component	Science	Technology	Engineering	Arts	Mathematics
Nature of Problem	Extending our understanding of the natural world	Developing ways to extend human capacity	Addressing a human need or concern	Expressing and interpreting human perception	Discovering mathematical relationships
Name of Process	Scientific Inquiry	Technology Design	Engineering Design	Creative Process	Mathematical Analysis
Initial Question	What causes...?	How can I...?	How can I make...?	Imagine if...	What is the relationship...?
Solutions and Products	Communications of new knowledge	Digital products, digital processes	Structures, equipment, machines, processes	Aesthetic expression, products, processes	Numerical solutions, equations

Science Learning Environment

STEAM problem-solving processes (i.e., scientific inquiry, technology and engineering design, the creative process, and mathematical analysis) differ in the nature of the question and the solution or product. However, all are based on the generic problem-solving process. All are iterative processes that involve reflection, evaluation, and feedback throughout. All require analytical thinking and creative thinking. The figures below compare the problem-solving processes for science, engineering, art, and math.



Figure 3. Generic Problem Solving Process

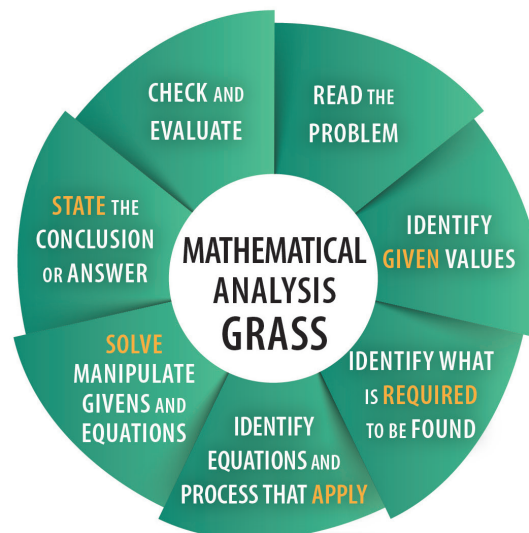
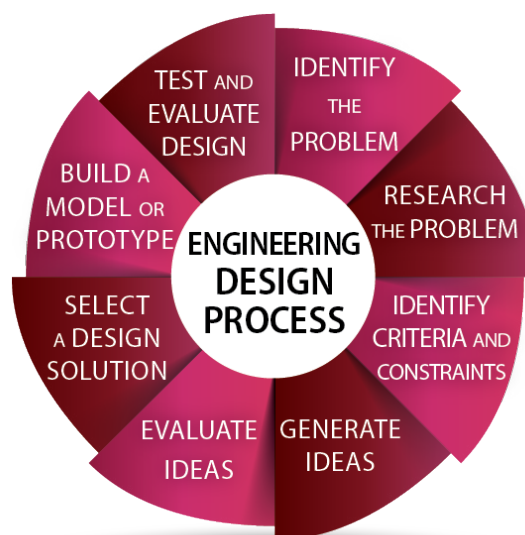


Figure 4. Comparison of STEAM Problem-Solving Processes

Interdisciplinary Skills

In addition to problem-solving, a number of interdisciplinary skills are required in science.

Mathematical Skills

Mathematics can be considered to be the language of many sciences. Mathematics is used to describe relationships, enable predictions, quantify, and validate evidence. Science provides a concrete context in which students can develop skills such as mental mathematics and estimation, problem-solving, mathematical reasoning, visualization, and connecting mathematical ideas to the real world. During Grades 7-10 mathematical skills used in science include, but are not limited to

- *measuring and applying appropriate units for quantities such as length, mass, and volume;*
- *performing unit conversions;*
- *solving problems using equations;*
- *expressing patterns and relationships mathematically;*
- *determining totals, averages, percentages, ratios, and proportions;*
- *presenting and interpreting data in graphical and tabular form;*
- *visualizing space and shape from different perspectives.*

Technology Skills

Technology is concerned with developing innovative solutions to problems arising from humans adapting to their environment. Science and technology have been inextricably linked throughout history. Technology is constantly producing new developments that have potential use in science and lead to a greater understanding of our world. New scientific developments, in turn, can inspire further technological innovations.

Technologies used in science include tools and equipment (e.g., thermometers, microscopes) common to science investigations and data gathering, as well as communication and information technologies. Students should develop skills specific to both forms of technology. Communication and information technologies (CITs) can be used during all steps of the science inquiry process.

Manipulative Skills

Manipulative skills are those skills involved with the handling of equipment and material. Developing confidence in using equipment, materials, and techniques enables students to explore and inquire in a safe manner while focusing on the concept being investigated rather than “how to.” These skills take time to develop and require that students in Grades 7 to 12 be given frequent opportunities to independently use lab equipment in a risk-free atmosphere. During the intermediate years, students should develop proficiency in skills and dexterity required when

- *making accurate measurements (e.g., length, mass, volume, time, temperature);*
- *using instruments (e.g., thermometers, multimeters);*
- *selecting and using appropriate glassware for measuring and mixing;*
- *using and caring for instruments, including knowing their use, parts, and adjustments (if applicable);*
- *employing safe practices when using chemicals and equipment;*
- *connecting components, constructing simple apparatuses, and creating simple innovations.*

Science Learning Environment

Data Collection and Analysis

- *Data loggers (e.g., temperature probes, motion detectors) permit students to collect and analyze data in real time.*
- *Spreadsheets and graphing software can facilitate the analysis and display of student-collected data or data obtained from databases.*

Visualization and Imaging

- *Simulation/modelling software provides opportunities to create and/or use models to explore concepts that are difficult to visualize, and perform experiments that are unsafe or difficult to perform in the classroom.*
- *Students may collect their own digital images and video recordings for analysis, or they may access digital images and online video software to help enhance understanding of scientific concepts.*

Communication and Collaboration

- *In addition to the usual tools involved in accessing information, and creating reports and presentations, the Internet can be a means of networking with scientists, teachers, and other students through social media, cloud computing, blogs, and video conferencing to collect and share information, and work on projects collaboratively.*

Language Skills

Language is the principal means through which students communicate with others and make meaning of scientific concepts, phenomena, and claims. These skills can be classified in terms of the input and output of information.

The input of information is addressed through reading, listening, and viewing. Learning about scientific concepts, claims, and ideas involves comprehending specialized vocabulary and understanding how to interpret informational texts such as textbooks, magazine articles, lab instructions, and case studies and their features (graphs, charts, tables, and diagrams). Comprehending the intent and purpose of text when evaluating the scientific validity of claims requires the ability to interpret tone and bias, and to determine the logic of arguments.

The output of information involves communication by speaking, writing, and representing. The purpose of scientific writing is to communicate new findings so that they can be retested, validated, and expanded upon by other scientists in the global scientific community. The style of writing employed by scientists works to this purpose by being succinct and precise, and by avoiding descriptive and colloquial words that may create bias or not be universally understood. Nomenclature rules (i.e., naming rules) for organisms and chemicals are determined by organizations such as IUPAC (International Union of Pure and Applied Chemistry) and the ICZN (International Commission on Zoological Nomenclature). When students write scientifically, they not only construct new understanding of the scientific concept being examined, but they also practise the basic principles inherent to the nature of science.



Figure 5. *The nature of language Arts*

PATHWAY TO SCIENTIFIC LITERACY K-12

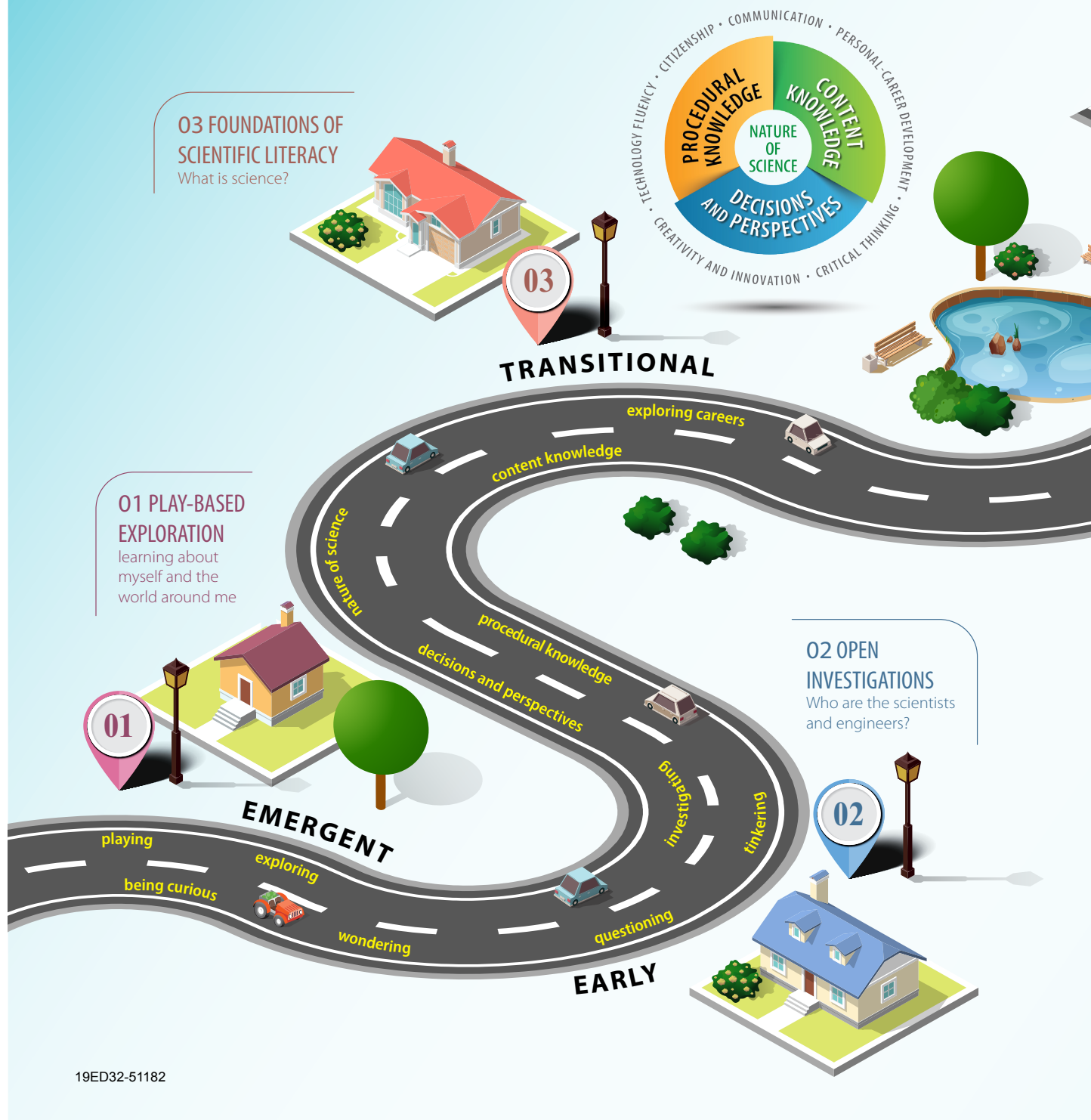


Figure 6. Pathways to Scientific Literacy

Pathway to Scientific Literacy



Foundations of Scientific Literacy

Overview

The four foundations of scientific literacy represent the complex and dynamic relationship of science and society that is depicted in Figure 7. How Science Works. Procedural knowledge and the Nature of Science are represented in this model by Exploration and Discovery, Testing Ideas, and Community Analysis and Feedback. The final results of science, Benefits and Outcomes, include the theories, models, and laws that help explain natural phenomena and are addressed by content knowledge. The Benefits and Outcomes section of the model also links to the foundation Decisions and Perspectives, since both relate to the application of science in our society.

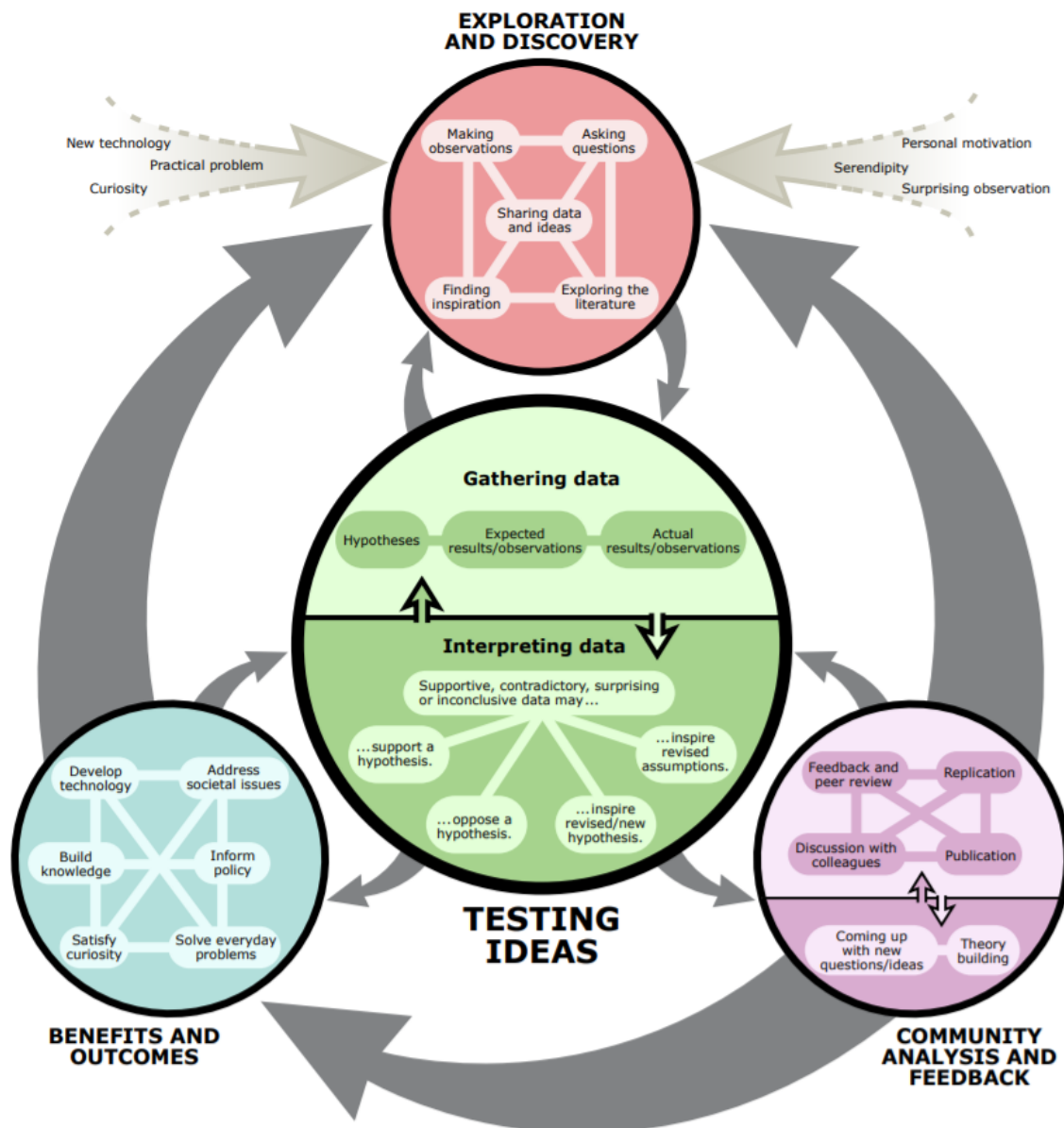


Figure 7. *How Science Works* (University of California Museum of Paleontology 2016)

Nature of Science

What is science?

Science originated as a philosophy of nature, and it stems from the curiosity of humans and their ambition to understand themselves and the natural world around them. Science presumes that the world has a natural organization and is coherent; therefore, it can be understood. From the historical beginnings of science, humans have attempted to explain the natural world around them by looking for patterns, trends, similarities, and differences in everything from structure and composition to properties and behaviours.

*“Epistemic knowledge includes an understanding of the function that questions, observations, theories, hypotheses, models, and arguments play in science, recognition of the variety of forms of scientific inquiry, and the role peer review plays in establishing knowledge that can be trusted.”
(OECD 2015)*

The branch of philosophy known as epistemology (theory of knowledge) examines knowledge and the way we come to know. Many ways of knowing have been identified—such as faith, intuition, emotion, perception, memory, imagination, and reason. (Dombrowski, Rotenberg, Brick 2013) Knowing something scientifically involves rational reasoning. It is not the purpose of this science curriculum to rate one way of knowing as superior to another, but instead, enable students to develop the skills necessary to think scientifically. This begins with an understanding of the characteristics and principles of science.

Science is Limited and Dynamic

Science is limited to developing knowledge and understanding of the physical world. Science can only address questions that have testable solutions; questions such as those relating to the supernatural, ethics, value, or aesthetics are beyond the scope of science.

The body of knowledge that is produced by science is constantly evolving, and much of our understanding of the world has resulted from a steady and gradual accumulation of knowledge over time. Scientists are always proposing and testing new hypotheses, researching, and building bodies of evidence that can lead to new theories.

Science is never absolute but based upon probability and levels of certainty. However, this does not mean that everything we know as a result of science cannot be relied upon or used to make decisions. Many hypotheses are accepted when it can be shown that there is a 95% probability that the results are not found due to chance; the probability of some studies is higher (e.g., 99%) and approaches, but never reaches, 100%. It takes many studies, each stemming from a hypothesis, and each passing through a rigorous review process, before the scientific community supports the acceptance of a new theory. By the time a theory is accepted, often decades of scientific studies have contributed to its acceptance.

Science is Evidence-Based

Although the practices and types of studies used by scientists to interpret and describe our world are quite varied (Figure 9), the knowledge they create is considered scientific when it is based on valid empirical evidence. Empirical evidence is qualitative or quantitative observations (data) recorded using human senses or technology; raw data must be analyzed and interpreted before it is considered evidence. The evidence used to support scientific claims may or may not result from experimentation. When evaluating evidence consider the following questions.

Evaluating Evidence

- Is it relevant?
- Is it plausible?
- Is it sufficient?
- Is it reliable?
- Is there bias?
- Is it replicable?

Foundations of Scientific Literacy: Nature of Science

Science Involves Rational Reasoning

The development of scientific claims and theories is characterized by an interplay between inductive and deductive reasoning. Inductive reasoning occurs when generalizations or inferences are made based upon observations. When scientists use generalizations to predict what will happen during a test or experiment, they are practising deductive reasoning. While inferring and inductive reasoning are important aspects of science, students should recognize that making a conclusion without testing and using deductive reasoning is “jumping to a conclusion” (Figure 6) and is not “scientific thinking.” Engaging students in reasoning and argumentation in defense of their claims or conclusions is central to the development of critical thinking in science

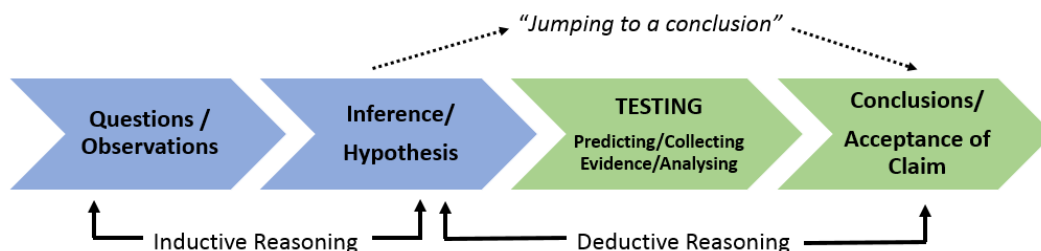


Figure 8. *Scientific Reasoning*

Science Language is Precise

Words commonly used to denote absolutes (e.g., all, none, never) are avoided in scientific communication to reflect that science cannot give complete certainty. Even fact, a statement of absolute truth in lay language, is used differently in science. This is also true for the terms hypothesis, law, and theory.

- A fact is a readily verifiable observation that is generally accepted (e.g., if you drop a coin from your hand, it will fall to the Earth). Facts in science are still open to inquiry and therefore able to change.
- Hypotheses are tentative explanations describing a causal relationship. Hypotheses are not guesses but stem from problems, questions, observations, logic, other hypotheses, and theories. The development of a hypothesis involves elements of curiosity, creativity, imagination, and intuition. Hypotheses lead to predictions of what will happen under a given set of circumstances (i.e., tests or investigations). Hypotheses can be accepted, rejected, or modified as a result of evidence. While hypotheses can never be proven true with 100% certainty, they can be proven to be false. Many varied hypotheses can be generated from one new scientific idea.
- A law is a descriptive generalization, often mathematical, that concerns patterns of behaviour regarding some aspect of the natural world. Laws differ from theories in that they are not explanations; they are similar in that both can be used to make predictions. It is a misconception that laws evolve from theories. It is also a misconception that laws are more credible than theories because they are definite and cannot be altered. Laws, like theories and hypotheses, can be rejected or modified as new evidence is found.

“Hypotheses are created, not discovered, and the process of their creation is just as open-minded as the process of artistic creation.”
(Schick and Vaughn 2014)

Examples of Laws

Laws of Thermodynamics
Law of Natural Selection
Ohm’s Law
Coulomb’s Law
Universal Law of Gravitation

Foundations of Scientific Literacy: Nature of Science

- A scientific theory is more than a passing, tentative suggestion, as is implied by its use in common language. A theory, as it is used by scientists, is a well substantiated explanation for a broad set of phenomena within the natural world. A theory synthesizes hypotheses, laws, principles, and facts from a broad range of studies and can involve a variety of fields. In addition to their ability to predict new and a diverse range of phenomena, theories are evaluated in terms of their ability to be tested, their simplicity (how many assumptions are required), and how well they fit into established scientific understandings. Theories maintain acceptance until disproven.

Examples of Theories

Atomic Theory
Germ Theory of Disease
Big Bang Theory
Theory of Evolution
Theory of General Relativity

Science is a Collaborative, Human Endeavour

The science community is global and includes people of all genders, societies, cultures, and ethnicities. While everyone uses science in some way, it is the members of this community who contribute to our deepening understanding of the world. This is due to the fact that scientific research often requires years of training and access to highly specialized equipment and materials that are not at the disposal of the average citizen.

Science is a collaborative process. The proliferation of information that has been generated by this discipline has heightened the need for specialization in increasingly narrower fields. To compensate for this, scientists often work in teams composed of a number of specialists from a variety of fields. Technology has facilitated this collaboration by eliminating the requirement for team members to work in the same geographical location. Online publishing makes the findings of studies available so that investigations can be repeated, critiqued, or developed in new directions. The rigorous process of critical review is frequently completed by peers who have an expertise within the area being studied. Whether by sharing expertise or by providing feedback, collaboration is an essential aspect of science.

Skills and Attitudes for Collaboration

Considering others' ideas and perspectives
Criticizing ideas, not people
Accepting criticism
Being persuasive
Listening
Showing initiative
Asking for and offering help
Sharing ideas
Being responsible, completing tasks
Taking turns
Clarifying and asking for clarification
Following directions

Procedural Knowledge

What do scientists do?

The focus of many scientific investigations (studies) is to determine the relationship between variables. Of interest to scientists is 1) Is there a relationship? 2) Is the relationship correlational? 3) Is the relationship causal? In correlational relationships, there is an association between the variables. However, it is not known whether or not one causes the other to occur. In causal relationships, one variable results in the response or occurrence of another in a consistent manner. Causal relationships can be complex such as is seen with chain reactions, biofeedback mechanisms, and biosphere nutrient cycles. Understanding cause and effect is an important step towards controlling or modifying the cause in ways that address a human need. Often, when a relationship between two variables is assumed to be causal, it is only correlational. Understanding the difference between these two concepts is a fundamental aspect of scientific literacy.

Examples of No Relationship, Correlational, or Cause and Effect

- Smoking and cancer (Causal)
- Genetically modified organisms (GMOs) and decrease in biodiversity (no Relationship)
- Climate change and human activity (Complex Causal)
- Vaccines and autism (no Relationship)
- Megadoses of vitamins and health (Correlation)

Correlations can be positive or negative. If the correlation is positive, the variables move in the same direction (e.g., an increase in attendance is associated with an increase in achievement). If the correlation is negative, a change in direction of one variable is associated with a change in the opposite direction of the other (e.g., an increase in the number of people vaccinated is associated with a decrease in the incidence of a disease—this is also causal). In science, establishing a correlational relationship requires more than observation and inductive reasoning. It requires data collection and statistical analysis, which are used to determine both the direction and strength of the correlation. (e.g., Pearson's correlation coefficient is calculated to measure the linear relationship between two variables.)

Correlational relationships can appear odd, until one remembers that they do not necessarily represent cause and effect. Two examples that demonstrate this are the positive correlation between smoking and alcoholism, and the positive correlation between ice-cream sales and violent crimes. Ice-cream sales do not cause crime. However, correlation may imply a causal relationship and warrant further examination, as was the case with smoking and lung cancer. Smoking was once thought to be beneficial to health. However, the mass production of cigarettes in the early part of the 20th century soon revealed a positive correlation between smoking and lung cancer. The question remained: was tobacco a causative agent?

Pure causation is extremely hard, and arguably impossible, to prove with 100% certainty. This is due to the fact that real life is complex with a variety of confounding variables that are unable to be completely identified and controlled. Sir Richard Doll and Sir Austin Bradford Hill confirmed the causal link between smoking and cancer in the 1950s. Part of their work involved establishing criteria (Hill's postulates) to increase the strength of causal claims. (Oleckno 2002) The more of these postulates that are true for a given relationship, the more likely it is causal in nature. Tools such as Hill's postulates, together with multiple lines of evidence gathered from examination of 7,000 studies over the following decade, resulted in consensus in 1964 that smoking does cause cancer.

Questions to Help Determine Cause and Effect (based on Hill's postulates)

- Does the cause come before effect?
- What is the strength of association (measured by statistics)?
- Is there a consistent association?
- Is there a mathematical relationship between variables?
- Does it make sense in terms of other established science?

Foundations of Scientific Literacy: Procedural Knowledge

Categories of Scientific Studies

One way to classify scientific inquiries is to divide them into two categories: experimental studies and observational studies (Figure 7). (Oleckno 2002) In experimental studies, the investigator has control over how the variables are manipulated. For example, in a study on the effect of temperature on the rate of a chemical reaction, the experimenter would manipulate the temperature (cause) and measure the responding change in reaction rate (effect). Confounders such as agitation and the type of chemical would be controlled. These forms of causal investigations are frequently equated with “inquiry” in science education. Observational studies, on the other hand, do not include direct manipulation and control of variables by the experimenter. The preferred study design is best determined by the nature of the question.

Randomized, controlled experimental investigations remain the gold-star method for validating cause and effect phenomena. A familiar type of randomized controlled study is one used in drug trials where some subjects are given the experimental drug to see if it causes an effect. For others, the drug (which is the independent variable) is replaced with a placebo; these subjects are the control group and should not experience the effect (dependent variable). If the subject is unaware of which treatment they received, the experiment is considered blind. This helps minimize bias that would reduce the quality of the evidence.

Observational studies can be descriptive or analytical in nature. Descriptive observational studies are not directed by a specific question but involve collecting information that may lead to the development of a hypothesis. Analytical-observational examinations, like experimental inquiries, are designed to answer a proposed question. However, due to ethical considerations, they do not allow for direct experimentation. Analytical-observational studies can still demonstrate causal relationships with a high degree of certainty when tools such as Hill’s postulates are used. To improve their ability to determine cause and effect, analytical-observational investigations rely on methods such as careful design (e.g., use of longitudinal studies) and rigorous statistical control. Observational studies are frequently used in medical research, and appear to be the ones that are most often surrounded by controversy in the media, especially when a cause and effect relationship is suggested.

Modelling: Investigating Complex Systems

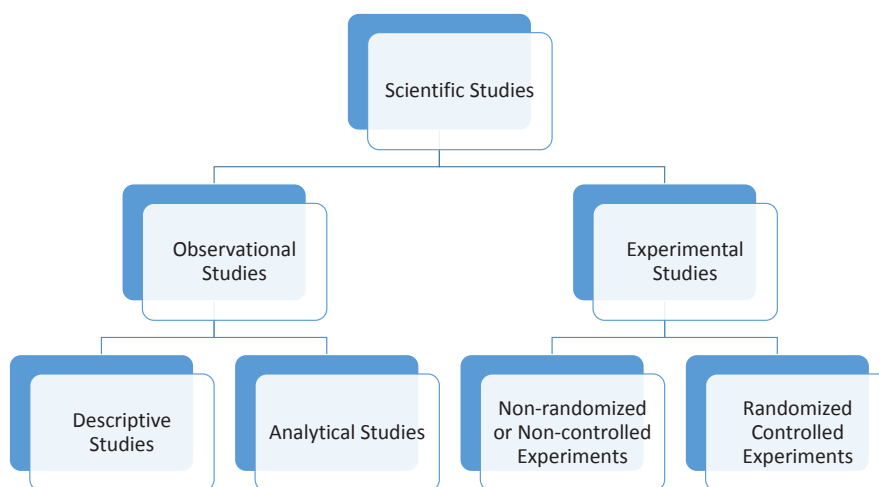


Figure 9. *Classification of Scientific Studies. Adapted from Oleckno, 2002*

Foundations of Scientific Literacy: Procedural Knowledge

Components of Scientific Inquiry

The process of developing scientific knowledge is a complex interplay of experimentation; current knowledge; modification of theories; debate; social, cultural, political, and economic influences; and peer review and acceptance. This observation of science has often resulted in the declaration, “There is no one scientific method.” This statement is true in the sense that there are many ways to inquire or answer scientific questions, but it has seemingly resulted in a misconception in science education that the approach to scientific investigation is vague and that there are no common elements in the way that scientists inquire. While study designs (Figure 9) vary depending on the question being asked, the process of developing new scientific knowledge always involves a number of aspects or stages (Figure 10). These aspects include asking testable questions about the natural world, collecting and analyzing evidence to answer those questions in a logical manner, and sharing that knowledge with other experts so that it can be skeptically reviewed and validated by other lines of evidence. Each stage of scientific inquiry is associated with specific skills and competencies (Table 4).



Figure 10. *Scientific Inquiry Process Wheel*

Foundations of Scientific Literacy: Procedural Knowledge

Table 4. Stages of the Scientific Inquiry Process and Selected Skills

Component of Scientific Literacy	Detail	Skills and Competencies
Initiating and Planning (creativity and innovation)	Exploring, tinkering, and asking questions	observing activating prior knowledge brainstorming researching for background information
	Hypothesizing	selecting and refining questions or hypotheses inferring (inductive reasoning), predicting
	Designing and investigating	planning (time, materials, sequence) identifying variables (independent, dependent, control) identifying data to be collected that will help answer the question adapting or developing a procedure performing a trial run
Performing and Recording (manipulative skills and problem-solving)	Performing an investigation and collecting evidence	using equipment and techniques safely or running computer simulations building prototypes, developing models following instructions and sequencing tasks reading digital and analog scales recording quantitative and qualitative data measuring accurately, recording precision of measurement managing time, evaluating progress, problem-solving as necessary collaborating
Analyzing and Interpreting Data (higher order/critical thinking)	Analyzing and interpreting evidence	analyzing patterns and trends using mathematical processes, knowledge, and skills graphing transforming representations (e.g., graphs ↔ tables, diagrams ↔ text) comparing and contrasting classifying identifying cause and effect, or correlational relationships making conclusions
	Evaluating errors	evaluating scientific errors (degree of reliability and certainty of measurement, and control of variables) reflecting on ways to improve future investigations and data
Communicating Findings (synthesizing, reasoning, argumentation)	Defending and communicating findings	constructing explanations using writing, media, visual literacy, and technology skills to create a product that communicates findings/makes a claim explaining (discussing) results using deductive reasoning, evidence, and argumentation to defend claim (accept or reject a hypothesis)
	Proposing further questions	identifying new questions that arise from the investigation

Foundations of Scientific Literacy: Procedural Knowledge

A system is a collection of components that interact with one another so that the overall effect is much greater than that of the individual components. Examples of systems are educational systems, political systems, transportation systems, the solar system, the respiratory system, electrical systems, mechanical systems, and ecosystems.

"Systems thinking is the ability to see the world as a complex system, where everything is connected to everything else." (Sterman 2000)

Systems thinking is an essential higher order thinking skill that involves thinking about a whole in terms of its parts, and alternatively, about the parts in terms of how they relate to one another and the whole. It involves analyzing the components, dynamics, and the interactions within and between systems. Examining systems in terms of stability, equilibrium, and rate of change is a major focus of both science and engineering.

Models are one tool used by scientists and engineers to help them understand natural and material systems. Models facilitate the understanding of abstract ideas and testing of relationships between variables in complex systems. Models, such as the atomic model, are refined as understanding of a phenomenon evolves.

Scientific models can take many forms. Conceptual models include:

- *physical replicas (e.g., model of the cell, landforms, water systems of area)*
- *diagrams that demonstrate the relationship of subatomic particles in the atom (Figure 11)*
- *flow charts that depict energy flow in a food web (Figure 12) or electricity transmission rates (Figure 13)*

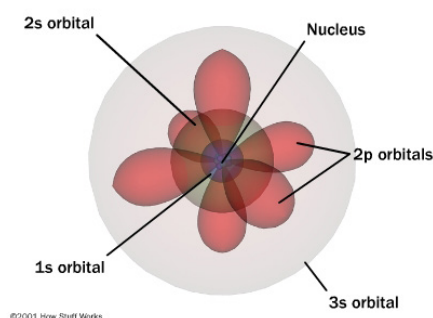


Figure 11. *Quantum Mechanical Model of the Atom*

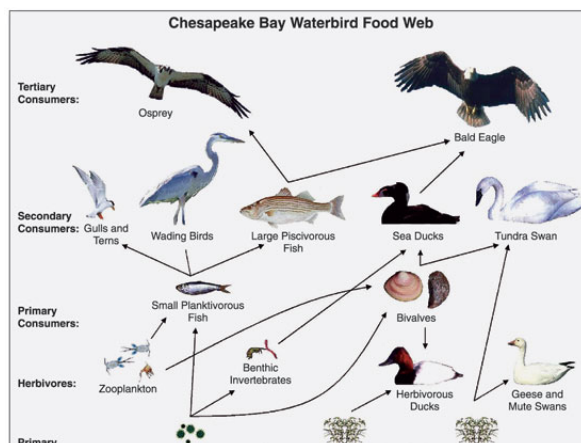


Figure 12. *Energy Flow in a Food Web (Perry 2019)*

Foundations of Scientific Literacy: Procedural Knowledge

Mathematical models can vary from simple mathematical formulas to computer simulations. The latter extends the human capacity to examine processes present in systems that are too complex or abstract to work with in a practical manner (e.g., global warming, climate change, rising sea levels, population dynamics of a species, forest stand growth, behaviour of a brake system prototype). Simulations are computer programs that connect various components (variables) of the system using mathematical relationships. They allow the experimenter to explore “what if” scenarios by giving them the flexibility to control certain variables while changing others. This enables greater understanding of complex interactions within the system and how these interactions impact the whole system. When students use computer simulations (e.g., Physics Education Technology (Wieman 2016)) to explore cause and effect relationships based on gas laws, or circuit electricity, they are practising science by using models. Students should be made aware, however, that because models are oversimplifications of real life, they have limited predictive powers.

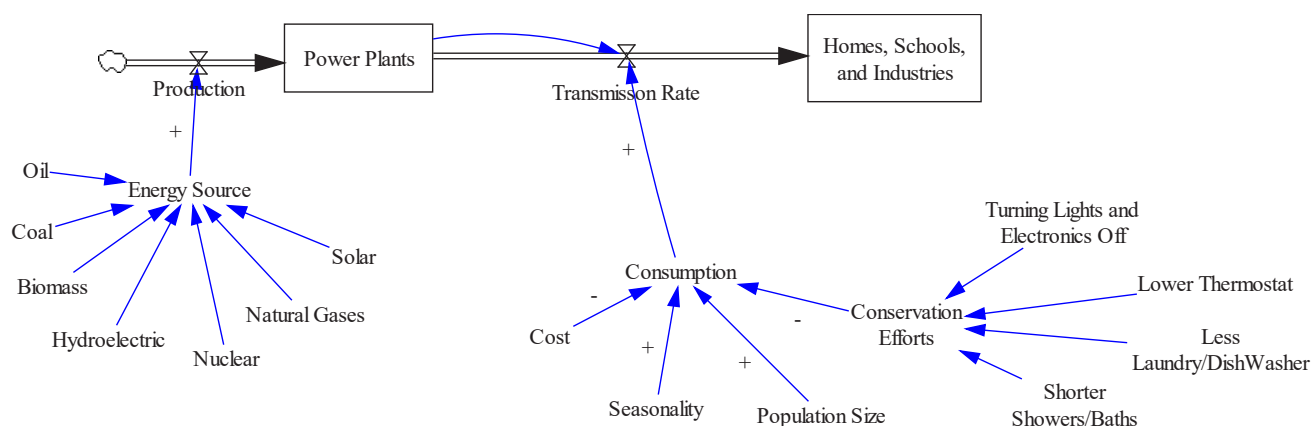


Figure 13. *Stock and Flow Conceptual Model*

Content Knowledge

What have scientists learned?

There are many fields of science (e.g., chemistry, physics, biology, geology), each of which is associated with specific theories (explanations), models, concepts, and principles. In science education, multiple fields are often grouped under the categories of life science, physical science, and Earth and space science.

Life Science

Life science examines the growth and interactions of life forms within their environments in ways that reflect their uniqueness, diversity, genetic continuity, and changing nature. Life science includes fields of study such as ecology, zoology, botany, cell biology, genetic engineering, and biotechnology.

Physical Science

Physical science, which encompasses chemistry and physics, is concerned with matter, energy, forces, and the relationships between them. Momentum, change, and the conservation laws of mass and energy are addressed by physical science.

Earth and Space Science

Earth and space science bring global and universal perspectives to students' knowledge. Earth, our home planet, exhibits form, structure, and patterns of change, as does our surrounding solar system and the physical universe beyond it. Earth and space science includes fields of study such as geology, meteorology, and astronomy.

Interdisciplinary Concepts

In addition to the knowledge generated by specific fields of science, there are a number of interdisciplinary concepts that are common to all sciences. For the purpose of this document, these concepts are grouped into five categories: matter; patterns in form and function; energy; cause and effect; and equilibrium, stability, and change within systems. Many of these concepts are not the exclusive domain of science but are also found in mathematics, technology, business, government and politics, education, and law. These themes are fundamental to the conceptual understanding of science and facilitate integrated and higher order thinking by providing a common framework on which students can organize and scientific knowledge. At every opportunity, these concepts should be taught explicitly within the context of the science topic being studied. Only after accumulating a wealth of examples, illustrations, and experiences will students integrate knowledge related to these abstract concepts into their thinking and synthesize their understanding of science. A summary of the more important aspects of each of five interdisciplinary concepts follows.

Interdisciplinary Science Concepts

Matter

Patterns in Form and Function

Energy

Cause and Effect

Equilibrium, Stability, and Change within systems

Foundations of Scientific Literacy: Content Knowledge

Matter

The identification, examination, transformation, and cycling of matter within and between systems is of interest to all scientific disciplines. Broad foundational concepts relating to matter include the following:

- All living and non-living entities on the Earth are composed of matter, which has mass and occupies space.
- The smallest unit of matter is the atom.
- Earth's matter is of a finite quantity.
- All matter—including that of plants, animals, elements, and compounds—is formed from various arrangements of atoms; principles that apply to the structure of matter in the physical (inorganic) world also apply to the organic world.
- Atoms are rearranged but not destroyed during chemical change; mass is conserved during chemical change.
- The smallest unit of living matter is the cell; all cells arise from other cells.
- Living matter or “life” is characterized by homeostasis (i.e., regulation of an internal environment), and the ability to metabolize, (i.e., produce energy from chemical reactions), move, grow, reproduce, respond to stimuli, and adapt to the external environment.

Patterns in Form and Function

Form refers to the physical structure, the shape, size, and composition of living and non-living things. Interdisciplinary concepts relating to form and function include the following:

- There is a vast array of living and non-living forms of matter.
- Science classifies matter on the basis of similarities and differences in form (structure) and function.
- There are clear relationships between structure and function in the components of natural and human-made systems. (For example, metallic elements contain atoms arranged in a manner that imparts properties such as conductivity and malleability; anatomical structures such as hollow bones in bird wings support flight.)

Energy

Energy, the ability to do work, is a central concept of science because all physical phenomena and interactions involve energy. Physics describes the interaction of matter and energy at the universal, macroscopic, and atomic levels and uses mathematical models such as the Newton's laws and Einstein's theory of special relativity to explain some of these interactions. Physics is concerned with concepts such as the conservation of energy and its transformation into various forms, motion, and forces. Chemistry focusses on the amount of energy required for chemical reactions to occur and the resulting energy released or absorbed from the surroundings during those reactions (e.g., combustion of fuels). In the life sciences, the flow of energy through individuals and ecosystems controls, maintains, and drives diverse phenomena such as photosynthesis, growth, metabolism, and interactions within food chains. Fundamental concepts relating to energy include the following:

- The sun is the source of radiant energy for the Earth.
- Energy, like matter, can be transferred or transformed, but never created nor destroyed.
- All matter contains energy as a result of its motion (kinetic energy), position (potential energy), or atomic makeup.

Foundations of Scientific Literacy: Content Knowledge

Cause and Effect

Cause and effect has been more thoroughly addressed in “Procedural Knowledge” p.26. Fundamental concepts relating to cause and effect include the following:

- In causal relationships between variables, one variable results in the response or occurrence of another in a consistent manner.
- A major focus of science is identifying, describing, and explaining cause and effect relationships. When possible, these relationships are described mathematically.
- Causal relationships can be complex, such as is seen with chain reactions, biofeedback mechanisms, and biosphere matter cycles.
- Understanding cause and effect helps scientists to predict.
- Correlation does not imply causation.

Equilibrium, Stability, and Change within Systems

A system is an abstract concept that is used in science to describe the part of the universe that is the focus of study. The interaction of components within a system is of interest to all sciences (“Modelling: Investigating Complex Systems” p.27). Fundamental concepts relating to systems include the following:

- A system is a collection of components that interact with one another so that the overall effect is much greater than that of the individual components.
- The boundaries of a system are determined by the observer and vary in scale (i.e., atomic, microscopic, macroscopic, and universal).
- Within living and non-living systems, dynamic (causal) relationships occur that involve changes in matter and energy.
- A system in which all processes of change appear to have stopped, or which displays constancy or stability is in a state known as equilibrium. When at equilibrium, opposing forces or processes balance in a static or dynamic way.
- Systems move towards equilibrium, a state of stability or balance (i.e., lowest potential energy).
- A cause, such as an outside force or an exchange of energy/matter with the surroundings, will cause a stable system to shift away from equilibrium and to exhibit change.
- Change in systems can occur as a steady trend, in a cyclical fashion, irregularly, or in any combination of these patterns.
- It is the rate of change that is often of most interest to scientists, since the rate of change can have a greater impact than the change itself on the stability of a system.
- Scientists use models as tools that facilitate the understanding and testing of relationships between variables in systems.

Decisions and Perspectives

How can science be applied to solve problems?

Science investigates the natural world to develop theories that explain how it works, and laws that describe its patterns of behaviour. Science is not focused on practical outcomes. Instead, technology and engineering apply scientific understanding to propose solutions to human needs or desires. Technology and engineering, like science, are creative human activities with a long history in all cultures of the world. While the three disciplines differ in purpose and methodologies, they are inextricably linked.

The needs addressed by the application of science often arise from humans adapting to and/or modifying their environment. The solutions include new products, processes, systems, or structures. For example, the application of science in agriculture addresses the need to feed an exploding population by developing new equipment, fertilizers, crops, animal breeds, and computer technologies that automate tasks such as feeding and milking. Mechanical, electrical, and civil engineering enable humans to dam and divert water in quantities that enable large-scale irrigation and the production of hydroelectric power. The application of science in medicine has resulted in technologies that detect disease in the early stages; new processes that can repair, replace, and rebuild parts of the human body; medicines that combat pathogens and regulate body functions; and bioengineering techniques that allow us to modify genes and grow new organs in alternative species.

What are the considerations when applying science?

Science is not a matter of opinion. However, decisions regarding how we should apply science, or act upon what we have learned, are based upon opinions that are influenced by various personal, political, cultural, ethical, and economical perspectives. For example, science has resulted in our understanding of chemical and biological principles that enabled the development of pesticides, tools to reduce disease and improve crop yields. However, opinion differs regarding which pesticides to use, when to use them, and in what quantity they should be used. To complicate things further, perspectives shift as our understanding progresses. A case in point is the story of the synthetic pesticide DDT that was developed in the 1940s to combat insect-borne diseases such as malaria. As evidence mounted about this chemical's severe adverse effects on the environment, and predatory birds in particular, there was a call to ban DDT in most countries and to use other pesticides more judiciously.

Decisions that we are required to make vary from personal day-to-day decisions to complex ethical issues that can affect entire species, including our own. As individuals, we make daily choices regarding food, health, and energy, often basing them upon scientific understanding. For example, studies on climate change have created a greater awareness that the burning of fossil fuels (e.g., coal, oil, gasoline) has caused an increase in atmospheric carbon dioxide, which has in turn resulted in climate change. This information has inspired many to consider alternative ways to heat their homes and travel to work. As consumers, our decisions have influenced research and the development of new technologies such as solar panels, windmills, and geothermal heating. As citizens in a democracy, we can influence the development and acceptance of policies, such as the United Nations Kyoto Protocol. Decisions at this level can affect the entire planet.

As science continues to open doors for innovation and the development of new technologies, we will continue to be called upon to make difficult decisions that require weighing the risks and benefits of these advancements. It is important that we teach our students how to think ethically about the application of science and technology and to consider the question, "Just because we can, should we?" Human ingenuity is frequently accompanied by impacts that can reach far around the globe and long into the future. Therefore, it is imperative for both sustainability and global harmony that we develop scientifically literate, ethical, and critical thinkers who are capable of deciding upon reasonable courses of action, while considering many varying perspectives. This requires that students have the opportunity to practise flexible thinking, listening to others, questioning, reasoning, and synthesizing their understanding.

BIO521A



SCIENCE

Grade 11 Biology



Curriculum Guide

Biology 521A Course Overview

Course Description

Biology 521A provides an opportunity for students to develop scientific literacy through a holistic examination of how human systems work independently and interdependently to maintain homeostasis – an optimum equilibrium state of function. These topics, along with procedural knowledge, provide the content and skill framework that will be used to engage students with the processes of scientific literacy (inquiry, problem solving, decision making) and continued development of the essential graduation competencies.

Biology 521A Course Overview

Outcome Summary

The outcomes of Biology 521A are categorized into four scientific literacy foundations (Nature of Science, Decisions and Perspectives, Procedural Knowledge and Content Knowledge). The table below shows the summary of specific curriculum outcomes for Biology 521A.

Table 5. Summary of Curriculum Outcomes

GCO	Code	Specific Curriculum Outcome
Nature of Science; Decisions and Perspectives	NoS 1	analyse the development of a technology related to the diagnosis or treatment of a disease
	DP 1	construct arguments to support a decision or judgment, using examples and evidence and recognizing various perspectives
Procedural Knowledge	PK 1	apply knowledge and understanding of safe laboratory protocols and procedures.
	PK 2	apply appropriate techniques, procedures, and technologies for collecting and analysing data to solve problems.
	PK 3	use uncertainty in data measurement and data processing.
	PK 4	evaluate scientific phenomena using argumentation.
	PK 5	design an experiment identifying and controlling major variables
	PK6	use appropriate language, visual aids, and formatting conventions to effectively communicate plans, procedures, data, results, and conclusions of research and experimentation.
Content Knowledge	CK 1.1	describe the structure and function of important biochemical compounds (water, carbohydrates, lipids, and proteins).
	CK 1.2	describe how the cell membrane and other organelles manage the cell processes to transport materials into and out of the cell to maintain homeostasis.
	CK 1.3	compare and contrast matter and energy transformations associated with the processes of photosynthesis and cellular respiration.
	CK 2.1	analyse how organ systems work together to maintain homeostasis.
	CK 2.2	examine how the human circulatory system helps maintain homeostasis.
	CK 2.3	examine how the human respiratory system helps maintain homeostasis.
	CK 2.4	examine how the human digestive system helps maintain homeostasis.
	CK 2.5	examine how the excretory system helps maintain homeostasis.
	CK 2.6	examine how the immune system helps maintain homeostasis.
	CK 2.7	examine how the nervous system helps maintain homeostasis.
	CK 2.8	examine how the endocrine system helps maintain homeostasis.
	CK 3	analyse the impact of infectious, genetic, and environmental diseases on the homeostasis of the system and the organism as a whole.

Biology 521A Course Overview

Assessment Framework

The assessment framework describes the relative weighting of each domain (unit or cluster of outcomes) within a specified course. It is constructed by transforming the depth and breadth of each specific curriculum outcome into an overall instructional time for each domain. The primary purpose of the assessment framework is one of validity - to align curriculum outcomes, instruction, and assessment. As such, the framework should be used to ensure that summative student assessments are representative of the instructional time and complexity of the specific curriculum outcomes for each domain, to inform the specified course reporting structure, and be consulted as a high-level guide for course planning, pacing, and syllabi development.

Table 6. Assessment Framework for BIO521A

Domain/GCO	Remember	Understand	Apply	Analyse	Evaluate	Create	GCO Weight
Nature of Science; Decisions and Perspectives				NoS1			10%
					DP1		
Procedural Knowledge			PK1				30%
			PK2				
			PK3				
					PK4		
						PK5	
			PK6				
Content Knowledge		CK1.1					60%
		CK1.2					
		CK1.3					
				CK2.1			
				CK2.2			
				CK2.3			
				CK2.4			
				CK2.5			
				CK2.6			
				CK2.7			
				CK2.8			
				CK3			

Reporting Structure

Nature of Science, Decisions & Perspectives	7	(10% of 70)
Procedural Knowledge	21	(30% of 70)
Content Knowledge	42	(60% of 70)
Major Assessments	30	(Reflective of Domain Weightings)

NATURE OF SCIENCE: SCIENTIFIC/TECHNOLOGICAL DEVELOPMENT

NoS 1	Learners are expected to ...					
	analyse the development of a technology related to the diagnosis or treatment of a disease.					
	Remembering	Understanding	Applying	Analysing	Evaluating	Creating

Achievement Indicators

Learners who have achieved this outcome should be able to ...

- analyse the design and function of a technology using scientific principles;
- describe examples where technologies were developed based on scientific understandings;
- analyse why and how a particular technology was developed and improved over time;
- analyse society's influence on scientific and technological endeavours;
- identify various constraints that result in trade-offs during the development of technologies; and
- explain how emerging technologies revolutionized thinking in the scientific community.



Citizenship

Communication



Critical Thinking

Technological Fluency

Personal-Career Development

Creativity and Innovation

Essential
Graduation
Competencies

ELABORATIONS

Outcome NoS1 can be addressed independently, or in conjunction with complementary outcome CK 3. Furthermore, this outcome may be addressed via a project, either individually or in groups, where students present their research in the form of a "speakers' series" or "video series" that is scheduled to occur throughout the course.

Students should analyse the design of their technology and the way it functions. To explain how their technology improved over time students should look at historic iterations of their technology to identify improvements/efficiencies resulting from the evolution of scientific knowledge. Furthermore, emerging technologies may have revolutionized how the scientific community thinks about the technology production and/or use.

Examples of technologies related to select systems are provided below as a reference.

Much of the recent success of surgery and transplants is due to research performed on, and in the creation of, immunosuppressants and anesthetics. Students may want to research a particular procedure to describe the development of medicinal drugs technology used to facilitate the process. Similarly, the use of a cardiopulmonary bypass (CPB) to temporarily take over the function of the heart and lungs during surgery is common to many procedures related to all systems.

Regarding the circulatory system, students may research the progress from bypass surgery to modern techniques (shunts, angioplasty, clot-busting drugs such as Plavix).

In consideration of the nervous system, students may investigate and discuss how specific technologies influence our ability to explore the human brain. Technologies may include MRI, EEG, CAT scan, and PET scan. Students may evaluate the consequences of damage or injury to the nervous system (e.g., stroke, spinal injury). Students may investigate the research being done on treatments for stroke and spinal injury and the potential these have for the improvement of the lifestyle of victims of these conditions. Stem cell research could be investigated with respect to Parkinson's disease.

Students should be aware of the importance of Canadian researchers Frederick Banting and Charles Best in the discovery of insulin and the control of diabetes. Furthermore, students may want to research methods of the measurement of blood sugar and delivery of insulin (from the past to present-day insulin pumps). Students may survey information concerning the influence of anesthetics, prescription drugs (e.g., OxyContin, Valium, Ritalin), illegal drugs (e.g., marijuana, ecstasy, cocaine), and legalized drugs (e.g., alcohol, nicotine, caffeine) on the functioning of the nervous and endocrine systems, and the relationship of drugs to addiction theory (e.g., nicotine, OxyContin, morphine, LSD). Students may compare the relative physiological and societal impacts of chemical and drug use on adult development and fetal development.

Regarding the excretory system, students can analyse the development of technology to treat kidney and urological diseases such as kidney failure, kidney stones, and bladder cancer.

Development of technologies related to the immune system is of global concern. Students can focus their research on vaccine technologies by investigating how vaccines make use of the workings of the immune system, and how the technologies and the procedures for their development have evolved over time. Alternatively, students may choose technologies used to treat a specific immune disease such as Hodgkin's.

DECISIONS AND PERSPECTIVES: SOCIETAL CONSIDERATIONS

DP 1	Learners are expected to ...					
	construct arguments to support a decision or judgment, using examples and evidence and recognising various perspectives.					
	Remembering	Understanding	Applying	Analysing	Evaluating	Creating

Achievement Indicators

Learners who have achieved this outcome should be able to ...

- identify multiple perspectives that influence a science-related decision or issue;
- debate the merits of funding specific scientific or technological endeavours and not others;
- propose a course of action on social issues related to science and technology, taking into account an array of perspectives, including that of sustainability;
- distinguish between questions that can be answered by science and those that cannot, and between problems that can be solved by technology and those that cannot; and
- propose alternative solutions to a given practical problem, identify the potential strengths and weaknesses of each, and select one as the basis for a plan.



Citizenship

Communication



Critical Thinking

Technological Fluency

Personal-Career Development

Creativity and Innovation

Essential
Graduation
Competencies

ELABORATIONS

This outcome is central to science, as it touches on all components of the nature of science — how and what we know about the natural/physical world. Argumentation is integral to science being a dynamic, evidence-based human endeavour that continuously toys with the interplay between inductive and deductive reasoning.

Argumentation is evaluative in nature. It requires a deep understanding of the task that is being analysed, followed by a decision (claim) to be made that is tied (reasoning) to supporting evidence. In the scientific realm, argumentation is often used in the discussion section of reports to justify the conclusion in relation to the experimental objective. In broader society, argumentation is informed by scientific knowledge used to make societal decisions that have moral, ethical, and cultural implications.

The intent of specific curriculum outcome DP 1 is to engage students in argumentation involving questions that cannot be answered by science alone. Rather, science is used to inform many societal decisions. The following questions/ scenarios provide contexts that may be used to engage students in specific curriculum outcome DP 1.

- Engage students in a case study related to organ transplantation, so they can construct an argument to defend a decision that requires identifying multiple perspectives that influence a science-related decision or issue. For example, these perspectives could include the difficult decisions that must be made to determine the recipient of an available organ for transplantation, the decision to make organ donation “opt out” versus “opt in”, and the decision to make organ sales illegal.
- Should technologies be developed and used to maintain, prolong, sustain, or terminate life?
- Debate the merits of using drugs for treatments of nervous disorders in light of their long-term side effects. Questions for discussion could also include the following: how does Valium affect the nervous system? (a question which can be answered by science); and how should society address the unlawful use of drugs such as OxyContin? (a questions that cannot be answered by science)
- Should society play a more proactive role in promoting the improvement of diets and the prevention of diseases, or a more reactive role in the treatment of diseases?
- Students might be asked to investigate provincial and community standards on smoking/vaping in public places and on tobacco advertising. Debates/discussions may involve a discussion of the rights of the smoker versus the non-smoker; the issue of exposure to secondhand smoke; why smoking/vaping remains an issue among youth, particularly among young women; or whether high schools should provide a smoking/vaping area for their students.
- The media inundates the public with information on fad diets. Students can evaluate how nutritional deficiency (e.g., starvation diets, bulimia, anorexia nervosa) can adversely affect the dynamic equilibrium. Students could be asked to investigate the physiological basis of these diets (e.g., high protein, high carbohydrate, low fat), their safety, and their effectiveness. These investigations could include more drastic weight loss measures that involve anatomical operations such as stomach stapling or removal of a portion of the small intestine.
- Students could research and debate the safety and necessity of food additives, food irradiation, and other technologies used to improve the shelf life or the attractiveness of food products; examine the relative value of the use of processed versus unprocessed foods; examine the use of pesticides on food crops; examine the necessity of techniques used only to make food more visually appealing to the consumer; discuss the question of where our food comes from; or examine the potential of the inadvertent introduction of foreign organisms to an ecosystem through the importation of food.

For more information on the process of constructing argument, please refer to specific curriculum outcome PK 4, which addresses argumentation as it relates to evaluating scientific phenomena.

PROCEDURAL KNOWLEDGE: SAFETY

PK1	Learners are expected to ...					
	apply knowledge and understanding of safe laboratory protocols and procedures.					
	Remembering	Understanding	Applying	Analysing	Evaluating	Creating

Achievement Indicators

Learners who have achieved this outcome should be able to ...

- interpret Workplace Hazardous Materials Information System 2015 (WHMIS 2015) pictograms and labels;
- ensure the safety of self and others by understanding the general safety protocols, procedures, and hazards;
- understand the safety protocols, procedures, and hazards specific to the activity being performed to ensure the safety of self and others; and
- apply appropriate protocols and procedures to acquire, use, and dispose of materials and equipment safely.



Citizenship

Critical Thinking



Personal-Career Development

Communication

Technological Fluency

Creativity and Innovation

Essential
Graduation
Competencies

ELABORATIONS

Students are expected to know their roles and responsibilities, the generic science safety guidelines, and the safety protocols and procedures specific to the science activity as outlined at the beginning of the activity.

Considering the importance of safety in science activities, assessment of this outcome should be frequent and triangulated (observation, conversation, product). This outcome contains a blend of knowing and doing; consequently, assessment should incorporate a variety of assessment techniques, some of which must incorporate performance assessment where students can demonstrate their knowledge and understanding through application.

Prior to engaging in any laboratory activities, students should be provided with generic science safety guidelines. These guideline can be introduced in a variety of creative ways to encourage thoughtful discussion. Students could engage in co-construction of criteria to relate to the questions, "What matters, what counts, and what is important for a safer science laboratory?" To assist with this process, a series of questions can be created to catalyse student thoughts on the various aspects of safety in the science laboratory. Furthermore, safety concerns and procedures specific to an activity should be addressed at the beginning of each activity.

WHMIS is a system in Canada that provides information regarding safe use and storage of chemicals in the workplace. WHMIS 2015 aligns these guidelines with the Globally Harmonized System of Classification and Labeling of Chemicals (GHS), which is a world-wide system currently being used. Information regarding WHMIS 2015 and GHS can be found on the website for the Canadian Centre for Occupational Health and Safety (<http://www.ccohs.ca>).

In grade 9 and 10 science (SCI9, SCI421A), students were introduced to the Workplace Hazardous Materials Information System (WHMIS 2015) through the expectation of applying safe practices when handling and disposing of lab materials. This required that students would recognise the components of workplace and supplier labels, and safety pictograms, and follow the safety advice provided. The intent of indicator PK1a is to have students interpret WHMIS labels and pictograms when the opportunity arises to do so.

PK1

PROCEDURAL KNOWLEDGE: EXPERIMENTATION

PK 2	Learners are expected to ...					
	apply appropriate techniques, procedures, and technologies for collecting and analysing data to solve problems.					
	Remembering	Understanding	Applying	Analysing	Evaluating	Creating

Achievement Indicators

Learners who have achieved this outcome should be able to ...

- use appropriate techniques for observation, data collection, and analysis;
- use appropriate data collection tools, including data loggers, for data collection;
- use appropriate data analysis tools, including spreadsheets, for data analysis; and
- communicate appropriate techniques and procedures needed to investigate scientific phenomena and solve a problem.

Citizenship



Communication

Critical Thinking



Technological Fluency

Personal-Career Development

Creativity and Innovation

**Essential
Graduation
Competencies**

ELABORATIONS

It is important that students not only know how to use technologies (ex. microscope, data logger, scalpel, spreadsheet) and techniques (ex. observation, sampling, analysis, anatomical dissection) that are common to science but are also able to apply and communicate appropriate techniques, procedures, and technologies specific to the topic being investigated in order to solve problems. Students must attain a level of understanding that allows them to act flexibly with the procedural knowledge that they acquire.

The tools, techniques, and procedures expected of students are those found and performed in the common core laboratory activities identified below.

Common Core Laboratory:

Lab 1: Factors Affecting Enzyme Activity

Lab 2: Microscopy (depth of field, field of view, and estimating specimen size)

Lab 3: Osmosis (e.g., red onion cell lab, potato and sugar solutions)

Lab 4: Photosynthesis/Cellular Respiration

Lab 5: Human Physiology (e.g., heart rate, blood pressure, vital capacity)

Lab 6: Nervous System Carousel (sense organs and reflex arc)

Lab 7: Dissection (Vertebrate; e.g. fetal pig)

The depth of this outcome goes beyond understanding and use. Students are expected to apply (and communicate) the techniques and procedures used. Consequently, the following question related to a common core lab procedure further elucidates the expectation for assessment of outcome PK 2.

Question

Describe a procedure to use a microscope to estimate the specimen size of an amoeba. Assume that the field of view of the scanning objective is 4000 μm (40x total magnification), and the low and high-power lens have a total magnification of 100x and 400x, respectively.

Answer Details

It is expected that the students would use the coarse adjustment knob to focus the image of an amoeba in the centre of the field of view. They should then proceed to describe that they would continually switch to higher power lenses until they have the highest-power lens that would allow the specimen to fit entirely in the field of view. Students would be expected to calculate the new field of view width based on the magnification of the ocular/objective lens and determine the specimen size by multiplying the calculated field of view by the proportion of the field of view that is occupied by the specimen.

Please note: For efficiency purposes, outcome PK 5 may be addressed by incorporating experimental design in any of the common core laboratories identified above.

PROCEDURAL KNOWLEDGE: UNCERTAINTY

PK 3	Learners are expected to ...					
	use uncertainty in data measurement and data processing.					
	Remembering	Understanding	Applying	Analysing	Evaluating	Creating

Achievement Indicators

Learners who have achieved this outcome should be able to ...

- understand random and systematic error and recognise their sources;
- distinguish between accuracy and precision;
- identify the error associated with measured values (\pm or % range);
- identify quantities, both implicit and explicit, required to solve a problem;
- manipulate subject-specific algebraic expressions to isolate any variable; and
- estimate and calculate an unknown quantity using known quantities.

Citizenship



Critical Thinking

Personal-Career Development



Communication

Technological Fluency

Creativity and Innovation

Essential
Graduation
Competencies

ELABORATIONS

Students should understand that uncertainty exists with all measured quantities, and the sources of error fall into one of two categories: random or systematic. Students should be able to identify sources of random and systematic error in laboratory experiments.

Random error results from the imprecision of measuring devices and leads to values measuring above or below the expected value. We often run multiple trials or use more precise equipment to mitigate random error.

Systematic error results from improper experimental setup and leads to values measuring always above or always below the expected value. Examples of systematic error would be a poorly calibrated instrument or a poorly controlled experiment. Multiple trials will not mitigate systematic error.

Evaluating the extent of scientific errors is important, since errors directly impact the quality of evidence used to support the final conclusion. Students should look for scientific errors that affect accuracy and precision. Scientific errors are accepted as an inherent part of science and reported with the results. Students should realize that scientific errors differ from mistakes. Mistakes include such things as forgetting to record data, miscalculating, spilling material, and setting up an apparatus incorrectly. In good science practice, investigations in which mistakes have occurred are discarded.

Table 7. Types of Error

Type of Error	Characteristics	Sources of Error	Ways to Reduce
Systematic Error (inaccuracy)	<ul style="list-style-type: none"> consistently in one direction due to design or skill can be eliminated 	<ul style="list-style-type: none"> quality of equipment uncalibrated equipment failure to control variables bias (observational) 	<ul style="list-style-type: none"> improve design or equipment use a control or blind study calibrate equipment
Random Error (imprecision)	<ul style="list-style-type: none"> fluctuates randomly can be reduced but not eliminated 	<ul style="list-style-type: none"> normal fluctuation in measurements imprecision of instruments used to measure too few measurements or samples 	<ul style="list-style-type: none"> use more precise equipment increase number of trials increase number of samples

Accuracy and precision are often used interchangeably; however, in science they have very specific meanings. Students should understand accuracy as how close a measured value is to the expected value, whereas precision relates to how close measured values are to each other. Specifically, precision dictates the significant figures in a measured value and is represented by uncertainty values, either as absolute or percent uncertainty.

Students should identify and record the absolute/percentage uncertainty that is associated with the use of equipment for measurements when the uncertainty is provided with the equipment (e.g., temperature probe uncertainty $\pm 0.1^\circ\text{C}$). Having these values will be of assistance to students when engaged in writing discussion/conclusions for laboratory experiments (links to PK 4). While the determination of uncertainty using various least count methods is a requirement in 500/600-level physical science courses, it is not an expectation that students in Biology 521A engage in the determination of uncertainty.

PROCEDURAL KNOWLEDGE: ARGUMENTATION

PK 4	Learners are expected to ...					
	evaluate scientific phenomena using argumentation.					
	Remembering	Understanding	Applying	Analysing	Evaluating	Creating

Achievement Indicators

Learners who have achieved this outcome should be able to ...

- a understand that scientific argumentation involves claim, evidence, and reasoning;
- b support a claim using evidence from experimental data and associated reasoning;
- c support a claim using concepts, models, laws, or theories and associated reasoning;
- d argue the directional impact of error on results;
- e argue which sources of error most likely had major/minor effects on results;
- f explain ways to adjust experimental procedure to mitigate uncertainty or to use controls to strengthen claims; and
- g evaluate the limitations of the evidence provided, including weaknesses in the methodology and possible sources of bias.

Citizenship



Critical Thinking

Personal-Career Development



Communication

Technological Fluency

Creativity and Innovation

**Essential
Graduation
Competencies**

ELABORATIONS

This outcome is central to science, as it touches on all components of the nature of science — how and what we know about the natural/physical world. Argumentation is integral to science being a dynamic, evidence based human endeavour that continuously toys with the interplay between inductive and deductive reasoning.

Argumentation is evaluative in nature. It requires a deep understanding of the task that is being analysed, followed by a decision (claim) to be made that is tied (reasoning) to supporting evidence. Argumentation is often used in the discussion section of reports to justify the conclusion in relation to the experimental objective. Furthermore, scientific argument is used to explain the types of error in experimentation, their directional impact on results, and resulting limitations of the study.

Argumentation has been introduced to students in earlier science courses, and it has a close correlation to other subject areas that involve persuasive writing and formal debate. The components of scientific argument (claim-evidence-reasoning), and the skill of writing argument should be formally addressed. The use of exemplars and gradual release of responsibility for learning ("Instructional Strategies," p.34) are recommended as instructional strategies. Writing frames such as the one illustrated below can be used to organize evidence and explanation as they relate to the claim. Students could be asked to complete a writing frame by deconstructing an exemplar. This process should elucidate how a writing frame is used and how to move from the frame to the completed argument.

Table 8. Claim, Reasoning, and Evidence Writing Frame Sample

Claim	Reasoning	Evidence
Your answer to a given question is your claim.	Reasoning is the bridge between your answer (claim) and the data that led you there (evidence).	The data (evidence) that helped you arrive at your claim is your evidence.
In the space provided, state your claim, define your evidence, and indicate how and/or why your evidence supports or justifies your claim. Together, your claim, evidence, and reasoning form your evidence-based argument.		

PROCEDURAL KNOWLEDGE: EXPERIMENTAL DESIGN

PK 5	Learners are expected to ...					
	design an experiment identifying and controlling major variables.					
	Remembering	Understanding	Applying	Analysing	Evaluating	Creating

Achievement Indicators

Learners who have achieved this outcome should be able to ...

- formulate relevant questions to investigate;
- formulate hypotheses and make informed predictions;
- identify and control major variables;
- select appropriate procedures/techniques to vary the independent variable; and
- select appropriate sampling procedures/techniques for the dependant variable.

Citizenship



Critical Thinking

Personal-Career Development

Communication

Technological Fluency



Creativity and Innovation

**Essential
Graduation
Competencies**

ELABORATIONS

Students are expected to continue the practice of experimental design that was developed in prior science courses (see below). Although the practice and understanding of experimental design is relatively static, the scientific phenomena studied in 500/600-level courses are more complex from a content and procedural knowledge perspective as compared with earlier grades. Consequently, the depth of knowledge required to design an experiment in 500/600-level courses will inherently be more complex as well.

Depending on the phenomenon being studied, teachers can decide if students will engage in designing an entire experimental procedure. Furthermore, teachers may choose instead to have students engaged in designing, or modifying the design of, a component of a study. For example, an experimental procedure may already have been used by students to measure atmospheric carbon dioxide levels resulting from photosynthesis/cellular respiration of a particular plant. In consideration of the procedure used, the students can decide on a question they wish to investigate and then modify the original procedure to allow for an investigation pertaining to the new inquiry. Alternatively, students could be asked to examine an experimental procedure, and to recommend modifications to the procedure that would mitigate the effects of confounding variables that may have been originally overlooked.

During intermediate grades, students were introduced to experimental design and practised generating descriptive and causal questions, identifying variables, writing and testing hypotheses, and identifying scientific errors (specifically, bias and lack of control of variables). In addition to designing an investigation, students in Science 421A were expected to analyse and evaluate the design of experiments more deeply. Criteria used to evaluate science investigations include reproducibility, repeatability, reliability, accuracy, and precision.

Throughout their studies of science, students should have been formally introduced to the following terms used in experimental design and would have been made aware that a fundamental principle of science is that results produced by an investigation are repeatable and reproducible.

Repeatable	yields consistent (reliable) results when performed by the same individual using the same equipment or apparatus
Reproducible	yields consistent (reliable) results when performed by another investigator using the same equipment or apparatus
Independent Variable	manipulated (altered) variable that causes a change in another variable. This is the only variable to be manipulated by the experimenter.
Dependent Variable	responding (measured) variable that is affected by the independent variable. The experimenter observes or measures any changes that occur.
Controlled Variable	variable that is neither altered nor measured, rather is maintained constant. To be certain that the independent variable is causing the observed effect on the dependent variable, all other variables must be controlled or kept constant.
Confounding variable	variable that is not properly controlled and can inadvertently affect the results
Hypothesis	a tentative, testable explanation to answer a causal question. It is a misconception that hypotheses are guesses. A hypothesis is accompanied by a prediction statement.
Prediction	statement describing what is expected to happen during the test if the hypothesis is correct. The prediction statement includes the direction of change (e.g., increase or decrease).

PROCEDURAL KNOWLEDGE: COMMUNICATION

PK 6	Learners are expected to ...					
	use appropriate language, visual aids, and formatting conventions to effectively communicate plans, procedures, data, results, and conclusions of research and experimentation.					
	Remembering	Understanding	Applying	Analysing	Evaluating	Creating

Achievement Indicators

Learners who have achieved this outcome should be able to ...

- use appropriate language conventions and visual aids to effectively communicate in research papers and experimental reports;
- use appropriate numeric and symbolic modes of representation to report data and associated units of measure;
- use a consistent style guide (MLA, APA, ACS, APS, Chicago, etc.) for referencing the works of others; and
- use a consistent style guide (MLA, APA, ACS, APS, Chicago, etc.) for formatting research papers and experiment reports and their components (tables, charts, lists, graphs, etc.).



Citizenship

Critical Thinking

Personal-Career Development



Communication

Technological Fluency

Creativity and Innovation

Essential
Graduation
Competencies

ELABORATIONS

The organization and style of scientific writing emphasize clarity, objectivity, and the use of specialized technical language to ensure that the message communicated is clear and unambiguous. Implied in “effectively communicate” in PK 6 is the quality or clarity of writing based on criteria such as word choice, organization, fluency, and mechanics.

To develop proficiency with technical writing, students can be provided with opportunities to practise skills specific to individual sections of lab reports (e.g., writing a sequential procedure, recording observations, interpreting patterns and trends in graphed data, and formulating a discussion) before completing a whole report.

Students should demonstrate proficiency using informational text features and technical writing conventions by creating purposeful tables, graphs, models, and diagrams. Students should also clearly communicate the nature of relationships within data, devices, apparatuses, or scientific concepts.

For consistency and clarity of expectations, A particular style guide should be adopted by your science department and applied across all science courses. Once students become proficient in applying the detail necessary to adhere to a particular style, they should have little difficulty applying alternate styles to written work. As multiple style guides are employed between, and within, each science discipline, it is important to note that the consistent use of a style guide is important. The type of style is of nominal importance. The same style guide should be further used to explicitly teach students how to avoid plagiarizing the work of others.

The use of exemplars and gradual release of responsibility for learning to elucidate appropriate language and style conventions are recommended as instructional strategies.

CONTENT KNOWLEDGE: BIOCHEMICAL COMPOUNDS

CK 1.1	Learners are expected to ...					
	describe the structure and function of important biochemical compounds (water, carbohydrates, lipids, and proteins).					
	Remembering	Understanding	Applying	Analysing	Evaluating	Creating

Achievement Indicators

Learners who have achieved this outcome should be able to ...

- describe the structure, properties, and function of the water molecule in relation to living systems;
- describe the basic structure and function of carbohydrates, lipids, and proteins;
- describe the basic monomer structure involved in the synthesis of carbohydrate, lipid, and protein polymers;
- illustrate how polymers are created via dehydration synthesis/condensation from monomers; and
- illustrate how polymers are broken down via hydrolysis.

Citizenship



Critical Thinking

Personal-Career Development



Communication

Technological Fluency

Creativity and Innovation

**Essential
Graduation
Competencies**

ELABORATIONS

As an introduction to the various biochemical compounds, teachers may provide students with a list of biochemical names or product labels and ask students to identify those that are familiar and describe what they know about the functioning of the compounds identified.

It is not the intent of CK 1.1 to have students recognise the name and structure of specific macromolecules (e.g., different protein names and chemical structures); however, students should know the basic structure of a carbohydrate, lipid, and protein and the associated monomer. They should be able to recognise which bonds are formed/broken during dehydration synthesis and hydrolysis. Hydrolysis is the breaking apart of larger biochemical molecules by the addition of the parts of a water molecule, H^+ and OH^- . Dehydration synthesis or condensation reactions refers to the removal of a water molecule during the joining of two molecules, such as amino acids to form proteins or simple sugars to form polysaccharides.

Please note: The structure and function of nucleic acids will be addressed in Biology 621A.

CK1.1

CONTENT KNOWLEDGE: CELL TRANSPORT

CK 1.2	Learners are expected to ...					
	describe how the cell membrane and other organelles manage the cell processes to transport materials into and out of the cell to maintain homeostasis.					
	Remembering	Understanding	Applying	Analysing	Evaluating	Creating

Achievement Indicators

Learners who have achieved this outcome should be able to ...

- explain how the structure of the cell membrane is related to its function (fluid-mosaic model);
- explain how materials are able to move into and out of cells through a selectively permeable membrane;
- define the terms diffusion, osmosis, facilitated diffusion, hypotonic, hypertonic, and isotonic;
- describe the effects of hypotonic, isotonic, and hypertonic solutions on animal and plant cells;
- define the terms protein pump, endocytosis (pinocytosis, phagocytosis), and exocytosis;
- describe the effects of protein pump, endocytosis (pinocytosis, phagocytosis), and exocytosis on animal and plant cells; and
- compare and contrast passive transport with active transport.

Citizenship



Critical Thinking

Personal-Career Development



Communication

Technological Fluency

Creativity and Innovation

Essential
Graduation
Competencies

ELABORATIONS

The processes of osmosis and diffusion can be easily illustrated in the classroom by setting up an experiment in which concentration gradients exist (links to PK 2). One example involves placing massed potato cubes in solutions of varying sugar concentration and determining if there is a change in mass over a specified amount of time. Students could then determine the isotonic concentration from the intercept of the graph of concentration versus percentage change in mass. Another example involves soaking an egg in vinegar overnight for the purpose of removing the shell while maintaining the membrane intact. The egg should be dried (with a towel), massed, and then placed in each of the following solutions for periods of eight minutes: pure distilled water, distilled water with 5% salt, distilled water with 10% salt, and distilled water with 20% salt. The egg must be dried and massed after eight minutes in each of the solutions. The students can then tabulate and explain the results.

Creation of a model cell membrane by students is an effective method, as well, to show passive, yet selective, transport through a membrane. Dialysis tubing or a sandwich bag can be utilized to represent the cell membrane. This example would use starch, sugar, and water located inside the tubing, and iodine and water located outside of the tubing.

Students can explore the concept of osmosis and the influence of hypotonic, hypertonic, and isotonic solutions by discussing how foods are preserved (sugar and salt); why plants may be adversely affected by too much fertilizer; why vegetables are sprayed with water at the local grocery stores; and how intravenous fluids are used in medical situations.

CONTENT KNOWLEDGE: ENERGY TRANSFORMATIONS

CK 1.3	Learners are expected to ...					
	compare and contrast matter and energy transformations associated with the processes of photosynthesis and cellular respiration..					
	Remembering	Understanding	Applying	Analysing	Evaluating	Creating

Achievement Indicators

Learners who have achieved this outcome should be able to ...

- define ADP and ATP and briefly describe how they are involved in the energy cycle ($\text{ADP} + \text{P} + \text{Energy} \rightleftharpoons \text{ATP}$);
- explain the importance of the processes of photosynthesis and aerobic cellular respiration for individual organisms;
- demonstrate, using equations, that photosynthesis and aerobic cellular respiration are complementary processes;
- explain the importance/impact of the processes of photosynthesis and aerobic respiration on a global basis (e.g., Climate Change); and
- define anaerobic respiration, and explain in general terms its role in industrial fermentation and muscle fatigue.



Citizenship

Communication



Critical Thinking

Technological Fluency

Personal-Career Development

Creativity and Innovation

Essential
Graduation
Competencies

ELABORATIONS

The emphasis of this outcome is the difference between aerobic processes and photosynthetic processes. It is not intended for students to investigate biochemical processes (glycolysis, Krebs cycle, electron transport chain, and light and dark reactions). This is a good opportunity to have students revisit from previous grades the organelles responsible for these energy-conversion processes (chloroplast, mitochondria).

Teachers should explain that photosynthetic organisms, using light as an energy source, remove CO₂, water, and other materials from their environment in order to assemble more complex organic compounds and release, as a byproduct, oxygen gas. Teachers should also explain that cellular respiration is a chemical process utilized by all organisms to extract energy from organic molecules. These organic substances are broken down into the components of CO₂ and water, and the energy released is utilized by the organism for its own purposes or released into the environment.

An analysis of the role of photosynthesis as the biological basis of the primary industries of agriculture, forestry, and fisheries would be appropriate. Students may also suggest ways that humans are manipulating the natural processes of photosynthesis and respiration through their activities (such as selective breeding to increase productivity), and discuss the potential ramifications of these activities. This discussion may lead to how the human population intentionally or unintentionally impacts the environment. For example, deforestation releases tremendous quantities of carbon into the atmosphere and destroys a carbon sink — thus having a compound effect on our ability to counteract climate change.

Students should be aware that some microorganisms are capable of metabolizing without the presence of oxygen (anaerobic respiration), and that these organisms are used in fermentation. Connections should also be made between muscle fatigue and oxygen deprivation with respect to anaerobic respiration.

CK1.3

CONTENT KNOWLEDGE: HOMEOSTASIS

CK 2.1	Learners are expected to ...					
	analyse how organ systems work together to maintain homeostasis.					
	Remembering	Understanding	Applying	Analysing	Evaluating	Creating

Achievement Indicators

Learners who have achieved this outcome should be able to ...

- define homeostasis, including the concept of dynamic equilibrium;
- describe what cells need to survive (O_2 , nutrients) and what waste that must be removed (metabolic waste, CO_2);
- explain the importance of fitness and nutrition in maintaining homeostasis; and
- analyse the interdependence of organ systems and how they may react in response to a disruption (stimuli).

Citizenship



Critical Thinking

Personal-Career Development



Communication

Technological Fluency

Creativity and Innovation

**Essential
Graduation
Competencies**

ELABORATIONS

In this outcome, students should be given the opportunity to study a variety of factors that affect the homeostasis of an organism. Through this, they will begin to appreciate the complexity of the mechanisms involved in the maintenance of homeostasis. Alternatively, students can be provided with a visual containing a high-level explanation of how various body systems contribute to the maintenance of homeostasis. Once provided they can discuss how each system interacts with given stimuli (fight or flight response, smell of pizza, cold temperature, etc.).

Teachers should establish a scenario that could be used to show the interdependence of body systems and their importance in the maintenance of homeostasis. As students begin to learn more about the functioning of the various body systems, the interactions among these systems will become increasingly elaborate. Once the functioning of the nervous and endocrine system is addressed, a more complete description of how an organism reacts to a stimulus can be described (from sensing to the response to establish equilibrium). Students could brainstorm responses to the following questions: What happens to your body as you run? Why? Answers generated by students may include increased heart rate; breathing more quickly and deeply; thirst; feeling sweaty, hot, and tired; or sore muscles. Students should suggest why the body would respond in each of these ways, and what body systems would be involved. For example, they might say that an increased heart rate (circulatory system) increases the distribution of O_2/CO_2 (respiratory system) and sugar (digestive system) to and from the tissues. Another scenario could be to investigate how illness (common cold) disrupts homeostasis to create specific symptoms.

Temperature regulation is only one of a number of the body's homeostatic mechanisms. Investigating the importance of temperature regulation is a good introduction to the body's feedback mechanisms. Some organisms incorporate behaviours to help control temperature. For example, lions move to shady areas during midday sun, and desert animals are primarily nocturnal. Physiologically, temperature control can be accomplished through the responses of the circulatory system. Vasoconstriction and vasodilation can assist in this process.

Students could investigate the terms *healthy nutrition* and *fitness*. Students could suggest what parts of their bodies or what body systems are involved in the achievement of health and fitness. For example, students may suggest that a balanced diet is important and propose a connection with the digestive system to break down the food and the circulatory system to distribute nutrients. This activity provides another opportunity to have students establish the interrelationships within the body and how these systems work together to maintain homeostasis.

Please note: This outcome should continuously be revisited in conjunction with all CK outcomes.

CONTENT KNOWLEDGE: CIRCULATORY SYSTEM

CK 2.2	Learners are expected to ...					
	examine how the human circulatory system helps maintain homeostasis.					
	Remembering	Understanding	Applying	Analysing	Evaluating	Creating

Achievement Indicators

Learners who have achieved this outcome should be able to ...

- identify the main components of the human heart and explain the role of each;
- trace the flow of blood through the heart and describe the pulmonary and systemic pathways;
- explain how the SA node and AV node control the heartbeat;
- describe the structure of an artery, vein, and capillary, and relate these structures to their functions in blood circulation;
- describe the meaning of systolic and diastolic blood pressure and their values as they relate to healthy blood pressure;
- identify the main components of blood and explain the role of each; and
- analyse how the circulatory system contributes to the maintenance of dynamic equilibrium through its role in the transport of heat, energy, and matter.

Citizenship

Critical Thinking



Personal-Career Development



Communication

Technological Fluency

Creativity and Innovation

**Essential
Graduation
Competencies**

ELABORATIONS

All organisms have some mechanism to circulate materials and dispose of wastes. Larger organisms require specialized transport systems in order to ensure that all cells have access to materials required for survival and waste removal.

In terms of depth of treatment, the following items are to be addressed with regard to the components of the heart: atria, ventricles, valves (bicuspid, tricuspid, semilunar), aorta, pulmonary vein, pulmonary artery, and septum. The main components of blood to be addressed include erythrocytes, leukocytes, platelets, and plasma.

Teachers may consider engaging students in specific curriculum outcome PK 2 by having students use a microscope to examine prepared slides of human blood and observe the contrasting morphologies, the relative abundance of the cellular components (red and white blood cells), and the structure of an artery, vein, and capillary. Furthermore, students could observe a heart by using preserved specimens, models, or computer simulations to help them clarify how the structure of the heart allows it to function as a mechanical pump.

To engage students in systems thinking (electrical, mechanical, biochemical), data from the use of datalogging equipment such as an EKG sensor can be used in conjunction with knowledge of the components of the circulatory system. During this process, students will have the opportunity to observe and appreciate how various structures control the direction of blood flow through the heart. Students can use a variety of ways to demonstrate this knowledge. One such method is to have student groups create a kinulation (kinesthetic simulation), where select students play a role of a circulatory system component while other students move through the system as “blood.”

CONTENT KNOWLEDGE: RESPIRATORY SYSTEM

CK 2.3	Learners are expected to ...					
	examine how the human respiratory system helps maintain homeostasis.					
	Remembering	Understanding	Applying	Analysing	Evaluating	Creating

Achievement Indicators

Learners who have achieved this outcome should be able to ...

- explain the characteristics of a respiratory surface as it relates to gas exchange;
- identify and state the function of the parts of the respiratory system;
- explain the mechanics of inhalation/exhalation;
- describe how respiratory gasses are transported in the blood (CO_2 - dissolved/bicarbonate/hemoglobin; O_2 - hemoglobin);
- explain the terms vital capacity, tidal volume, inspiratory reserve volume, expiratory reserve volume, and residual volume; and
- analyse how the respiratory system contributes to the maintenance of dynamic equilibrium through its role in gas exchange.

Citizenship

Critical Thinking



Personal-Career Development



Communication

Technological Fluency

Creativity and Innovation

Essential
Graduation
Competencies

ELABORATIONS

Students should be reminded that humans require a respiratory surface for gas exchange and for the provision of O_2 for respiration at the cellular level. The respiratory surface must be moist, thin-walled, large enough for efficient gas exchange, and in contact with a transport system. Students should realize that moisture is required to allow gas dissolution and cross-membrane transport. A large surface area aids in efficiency and accounts for the advantage of the mammalian lung.

Students should investigate the mechanics of inhalation/exhalation and the regulation of the breathing cycle. They may construct a model to illustrate the functioning of the diaphragm in respiration. A popular design involves the use of a bell jar, with balloons to represent lungs and a membrane to represent the diaphragm.

Students should identify and state the function of the following components of the respiration system: nasal cavity, pharynx, epiglottis, trachea, larynx, bronchi, bronchioles, alveoli, diaphragm, intercostal muscle, ribs, and sternum.

CK2.3

CONTENT KNOWLEDGE: DIGESTIVE SYSTEM

CK 2.4	Learners are expected to ...					
	examine how the human digestive system helps maintain homeostasis.					
	Remembering	Understanding	Applying	Analysing	Evaluating	Creating

Achievement Indicators

Learners who have achieved this outcome should be able to ...

- describe the purpose and functioning of the digestive system;
- define mechanical and chemical digestion and explain the relationship between them;
- identify the major organs and glands of digestion and describe their roles in the digestive process;
- trace the pathway of food through the digestive tract and explain the efficiency of its structures (e.g., villi);
- identify the general role and activity of enzymes, secretions, and microbiome in the digestive tract; and
- analyse how the digestive system contributes to the maintenance of dynamic equilibrium through its role in breaking down food into nutrients.

Citizenship

Critical Thinking



Personal-Career Development

**Essential
Graduation
Competencies**


Communication

Technological Fluency

Creativity and Innovation

ELABORATIONS

Students should be aware that the purpose of digestion is to convert large molecules into smaller ones capable of being utilized by the cell. Students should distinguish between mechanical digestion (physical change) and chemical digestion (chemical change) via the action of enzymes. Students should understand that enzymes catalyse chemical reactions by binding to specific substrate(s) in order to produce the desired product(s). Students do not need to know the specific chemical formulas, only the basic structures of carbohydrates, lipids, and proteins (links to CK 1.1).

Students should describe the function of the following organs or glands in the digestive process: oral cavity, salivary gland, esophagus, stomach, small intestine, liver, pancreas, gallbladder, large intestine, rectum, and anus. An effective method for students to do this is through the use of a chart (or body diagram) that places the organs in the order that they are found in the digestive pathway with information related to associated glands, type of digestion, and enzymes/secretions involved. It is important to have students distinguish between the digestive organs through which food travels (e.g., stomach, small intestine, oral cavity) and the accessory digestive organs that assist with digestion via secretions (e.g., liver, gallbladder, pancreas, salivary glands).

Students could be provided with the opportunity to observe the principal features of the digestive system by utilizing models, computer simulations, or dissection, and to identify the structures through the use of drawings or photographs. To emphasize the unifying theme of form and function, teachers can relate the structure of intestinal villi (increased surface area for absorption) to the processes of active transport (links to CK 1.2), where basic nutrients from the intestines are carried across the cell membrane into the blood vessels.

Please note: Nutritional requirements and health are addressed in CK 2.1.

CONTENT KNOWLEDGE: EXCRETORY SYSTEM

CK 2.5	Learners are expected to ...					
	examine how the excretory system helps maintain homeostasis.					
	Remembering	Understanding	Applying	Analysing	Evaluating	Creating

Achievement Indicators

Learners who have achieved this outcome should be able to ...

- explain the role of the lungs, skin, and liver in excretion;
- identify and describe the main structures of the human urinary system, including the kidney (cortex, medulla, and pelvis), ureter, bladder, and urethra;
- explain the role of the kidney as an excretory organ in removing metabolic wastes from the body;
- identify and explain the function of the glomerulus and the parts of a nephron (Bowman's capsule, loop of Henle, tubules - proximal and distal, collecting duct); and
- analyse how the excretory system contributes to the maintenance of dynamic equilibrium through its role in regulating the volume and composition of body fluid.

Citizenship

Critical Thinking



Personal-Career Development



Communication

Technological Fluency

Creativity and Innovation

**Essential
Graduation
Competencies**

ELABORATIONS

Excretory systems maintain homeostasis with respect to water, salt, and metabolite concentrations within the blood. Students may oversimplify the excretory system by thinking it is all about the kidney (which removes metabolic wastes). Several other organs involved in the excretory system are often overlooked. Students should briefly overview the function of the lungs (which remove CO_2), the skin (which removes heat, mineral salts, and urea), and the liver (which removes metabolic wastes and creates bile and urea) as vital organs that play a major role in the excretory system.

Students should be provided with the opportunity to observe the principal features of the human excretory system utilizing models, dissection, or computer simulations, and to identify the structures through the use of drawings or photographs. Diagrams or charts could be used to illustrate the structure of the nephron and to emphasize its role as the working unit of the kidney. Microscopic analysis of a kidney cortex section could provide some visual confirmation of the structural components of the kidney.

Students will recognise the kidney's structure as including the cortex, medulla, and pelvis, and will understand the filtration and selective reabsorption functions of the nephron (links to cell transport CK 1.2). Students could perform experiments to investigate simulated urine composition, perform data analysis, and summarize the role of the kidney in homeostatic regulation of pH, water, and ionic substances.

CONTENT KNOWLEDGE: IMMUNE SYSTEM

CK 2.6	Learners are expected to ...					
	examine how the immune system helps maintain homeostasis.					
	Remembering	Understanding	Applying	Analysing	Evaluating	Creating

Achievement Indicators

Learners who have achieved this outcome should be able to ...

- compare and contrast the types of immune response: physical and chemical barriers, the inflammatory response, and the adaptive immune system;
- describe the role of phagocytes and lymphocytes in the immune response;
- explain the meaning of antigen and antibody;
- explain the mechanism of passive immunity (e.g., breastmilk) and acquired immunity (e.g., vaccines, actual exposure); and
- analyse how the immune system contributes to the maintenance of dynamic equilibrium through its role in protecting the body from foreign invaders that cause infection, illness, and disease.

Citizenship

Critical Thinking



Personal-Career Development



Communication

Technological Fluency

Creativity and Innovation

**Essential
Graduation
Competencies**

ELABORATIONS

Students should compare and contrast the types of immune responses. Physical and chemical barriers such as skin, sweat, and stomach acid are non-specific. The inflammatory response and phagocytes as a general response to a foreign substance should be explained. The role of B cells (naive, memory, and plasma), T cells, and antibodies in the adaptive immune response should be summarized.

The specificity of antibodies and their role in binding/inactivation and "flagging" for phagocytes should be discussed. The application of antibodies may be discussed in terms of passive immunity (e.g., breastmilk, monoclonal antibody treatments, Sotrovimab for COVID-19, Pertuzumab for breast cancer) and biotechnology applications (e.g., pregnancy test, ELISA, Western Blot).

Students may investigate vaccine-preventable illnesses (like smallpox, tuberculosis, polio, chicken pox, etc.). In conjunction with DP 1, the social impact of infectious diseases and vaccine programs could be discussed.

CONTENT KNOWLEDGE: NERVOUS SYSTEM

CK 2.7	Learners are expected to ...					
	examine how the nervous system helps maintain homeostasis.					
	Remembering	Understanding	Applying	Analysing	Evaluating	Creating

Achievement Indicators

Learners who have achieved this outcome should be able to ...

- identify the requirements necessary for a nervous response to occur, including sensory receptors (eye, ear, skin), impulse transmission (neurons), interpretation and analysis of impulses (spinal cord and brain), and effectors (muscles, glands);
- describe the function of sensory neurons, motor neurons, and interneurons;
- describe the structure of the typical neuron and explain the function of each part;
- describe the transmission of an action potential along the length of a neuron;
- describe the transmission of an impulse across a synapse and the general effects of an excitatory and inhibitory neurotransmitter involved (acetylcholine, noradrenaline, glutamate, GABA, dopamine, serotonin);
- explain the basic structure, function, and protection of the central nervous system (brain, spinal cord);
- describe the basic functions of a peripheral nervous system (autonomic – sympathetic/parasympathetic; somatic); and
- analyse how the nervous system contributes to the maintenance of dynamic equilibrium through its role in monitoring and controlling body processes.

Citizenship



Critical Thinking

Personal-Career Development

Communication

Technological Fluency

Creativity and Innovation

**Essential
Graduation
Competencies**

ELABORATIONS

Neuron Structure and Function

The study of the structure and function of neuron components should include dendrite, cell body, axon, axon terminal, and Schwann cells (myelin sheath and nodes of Ranvier). Students can observe the structure of neurons and neuromuscular junctions on prepared microscope slides in the laboratory. Students should be able to describe the role of the sodium-potassium (Na^+/K^+) pump as it pertains to ion distributions. Discussion of action potential should be described at a very basic level. Threshold potential causes a chain of depolarization and repolarization that ultimately creates a nerve impulse to flow the length of an axon. While action potential is beyond the scope of this outcome, students can be directed to various websites containing animations of this process, should they wish to view it in more depth. Considering the cursory treatment of action potential, the function of neurotransmitters should only be described as excitatory (depolarizing) or inhibitory (repolarizing). When the action potential reaches the axon terminal, a neurotransmitter is released, which triggers an action potential in a neighbouring neuron or a response in an effector such as a muscle or gland. Students should be provided with examples of both excitatory and inhibitory neurotransmitters and the positive and negative effects of their presence on an organism.

Cells within the nervous system require enormous amounts of energy to function. This energy is provided by the processing of glucose and the production of ATP, which requires an adequate supply of carbohydrates and oxygen. The energy is required to maintain the resting potential (operate the sodium-potassium pump) and convert chemical signals into electrical signals that travel along a nerve cell (action potential) and between individual nerve cells (synapse).

Central Nervous System

Students should explain how the nervous system is protected (skull, meninges, cerebrospinal fluid) and explain the basic structure and function of the brain (cerebrum, cerebellum, medulla oblongata, thalamus, hypothalamus, midbrain, pons, and corpus callosum). Students should understand that the basic function of the cerebrum is to sort and interpret all of the information from our senses. It is the part of the brain that makes humans different from animals because it is the centre of human consciousness. Students should also understand that the cerebrum can be divided into two hemispheres (left and right) or four lobes (frontal, parietal, temporal, occipital). For Biology 521A, it is not necessary for students to know the individual function of each hemisphere or lobe.

Peripheral Nervous System

Students can prepare a chart to visually contrast the sympathetic and parasympathetic components of the autonomic nervous system in various parts of the body (e.g., heart, digestive tract, blood vessels, bladder, bronchi, eye).

CONTENT KNOWLEDGE: ENDOCRINE SYSTEM

CK 2.8	Learners are expected to ...					
	examine how the endocrine system helps maintain homeostasis.					
	Remembering	Understanding	Applying	Analysing	Evaluating	Creating

Achievement Indicators

Learners who have achieved this outcome should be able to ...

- compare and contrast the mechanisms used by the nervous and endocrine systems as communication networks in the body;
- explain the general concepts of a hormone and target cell organ in terms of hormone solubility in membranes (steroid vs. non-steroid) and location of protein receptors;
- identify the location and function of the principal endocrine glands in the human organism;
- identify hormones and their source glands and explain their general effects on homeostasis;
- describe the general function of negative feedback loops and identify an example; and
- analyse how the endocrine system contributes to the maintenance of dynamic equilibrium through its role in releasing chemical hormones from various glands.

Citizenship

Critical Thinking



Personal-Career Development



Communication

Technological Fluency

Creativity and Innovation

**Essential
Graduation
Competencies**

ELABORATIONS

The endocrine system of animals releases chemical hormones into the blood to be circulated. These hormones help maintain homeostasis by causing or preventing change in specific organs or tissues of the body. The endocrine system is slower in producing an effect than the nervous system; however, the effect is more sustained. It is important for students to realize that the nervous system and endocrine system work together in a coordinated fashion.

Teachers could use a series of tables to summarize information about the glands, their hormones, their targets, and their functions. Hormones that should be examined include HGH, TSH, thyroxine, melatonin, insulin, glucagon, adrenaline, ACTH, cortisol, calcitonin, and PTH. The hypersecretion and hyposecretion of a hormone could be examined (linked to CK 3).

Teachers should distinguish between both steroid and non-steroid hormones and how the cell responds to each type of hormone (solubility in cell membrane, location of receptors, end result).

Students should explore the location and function of the following glands: pituitary, hypothalamus, pineal, thyroid, parathyroid, adrenal, and pancreas (endocrine/exocrine). Please note that the ovaries and testes can be mentioned; however, these glands and associated hormones will be studied in depth in Biology 621A.

Students should be able to use flowcharts to describe representative negative feedback mechanisms in living systems. Within the discussion of the hypothalamus-pituitary complex, RF (releasing factor), pituitary hormones, and target tissues (e.g., TSH on thyroid) should be included. Students should be able to represent how glucose, thyroxin, or calcium is regulated.

Please note: Positive feedback will be described in detail in Biology 621A. For example, one topic is the role of oxytocin to illustrate a positive feedback loop in a human system (e.g., When the water breaks during labour, pressure is exerted on the cervix and an increase in uterine contractions occurs. In turn, more oxytocin is released, which then increases the contractions.)

CONTENT KNOWLEDGE: DISEASES

CK 3	Learners are expected to ...					
	analyse the impact of infectious, genetic, and environmental diseases on the homeostasis of the system and the organism as a whole.					
	Remembering	Understanding	Applying	Analysing	Evaluating	Creating

Achievement Indicators

Learners who have achieved this outcome should be able to ...

- describe the signs and symptoms of the disease;
- identify the cause of the disease (infectious, genetic, environmental);
- analyse how the disease impacts the normal functioning of the affected system(s);
- analyse how the disease impacts the normal functioning of the organism; and
- describe available cures and/or treatment of symptoms.



Citizenship

Communication



Critical Thinking

Technological Fluency



Personal-Career Development

Creativity and Innovation

Essential
Graduation
Competencies

ELABORATIONS

This outcome can be addressed independently or in conjunction with complementary outcome NoS 1, where students must analyse the development of a technology related to the diagnosis and treatment of a disease. Furthermore, this outcome can be addressed by having students engage in a research project that gives them agency (voice and choice) over the topic and mode of presentation. The project can take on many forms, one of which is a “speakers' series” or “video series” where brief student presentations or videos are scheduled to occur throughout the duration of the course at times that may coincide with the system being studied.

Students could investigate a variety of diseases that include, but are not limited to, the following:

Circulatory System

heart attack, stroke, varicose veins, heart murmur, aneurysm, blood clots, leukemia, pulmonary edema (congestive heart failure), hypertension, atherosclerosis, and arteriosclerosis

Digestive System

cancer, Crohn's disease, celiac disease, ulcers, gallstones, and ileitis/colitis

Respiratory System

lung cancer, pneumonia, asthma, bronchitis, emphysema, and the impact of environmental factors such as cigarette smoke, allergens (dust, mold, food), petrochemical fumes, smog, perfumes, asbestos, farmer's lung, and vaping-associated lung injury

Excretory System

diabetes, nephritis, kidney stones, bladder infections, and kidney infections

Nervous System

multiple sclerosis, Alzheimer's disease, Parkinson's disease, meningitis, and Huntington's disease. Students may be interested in other conditions related to nervous function, such as polio, stroke, Bell's palsy, ALS, Tourette syndrome, epilepsy, or mental health disorders related to chemical imbalances (e.g., anxiety, clinical depression).

Endocrine System

pituitary dwarfism, gigantism, hyperthyroidism, hypothyroidism, and diabetes mellitus

Immune System

rheumatoid arthritis and Hodgkin's

While the terms disease, disorder, and syndrome are often used interchangeably, they actually have a specific meanings that are unique. Although this outcome and its achievement indicators reference the term disease, students can analyse disorders and syndromes.

Appendix A: The Scientific Continuum

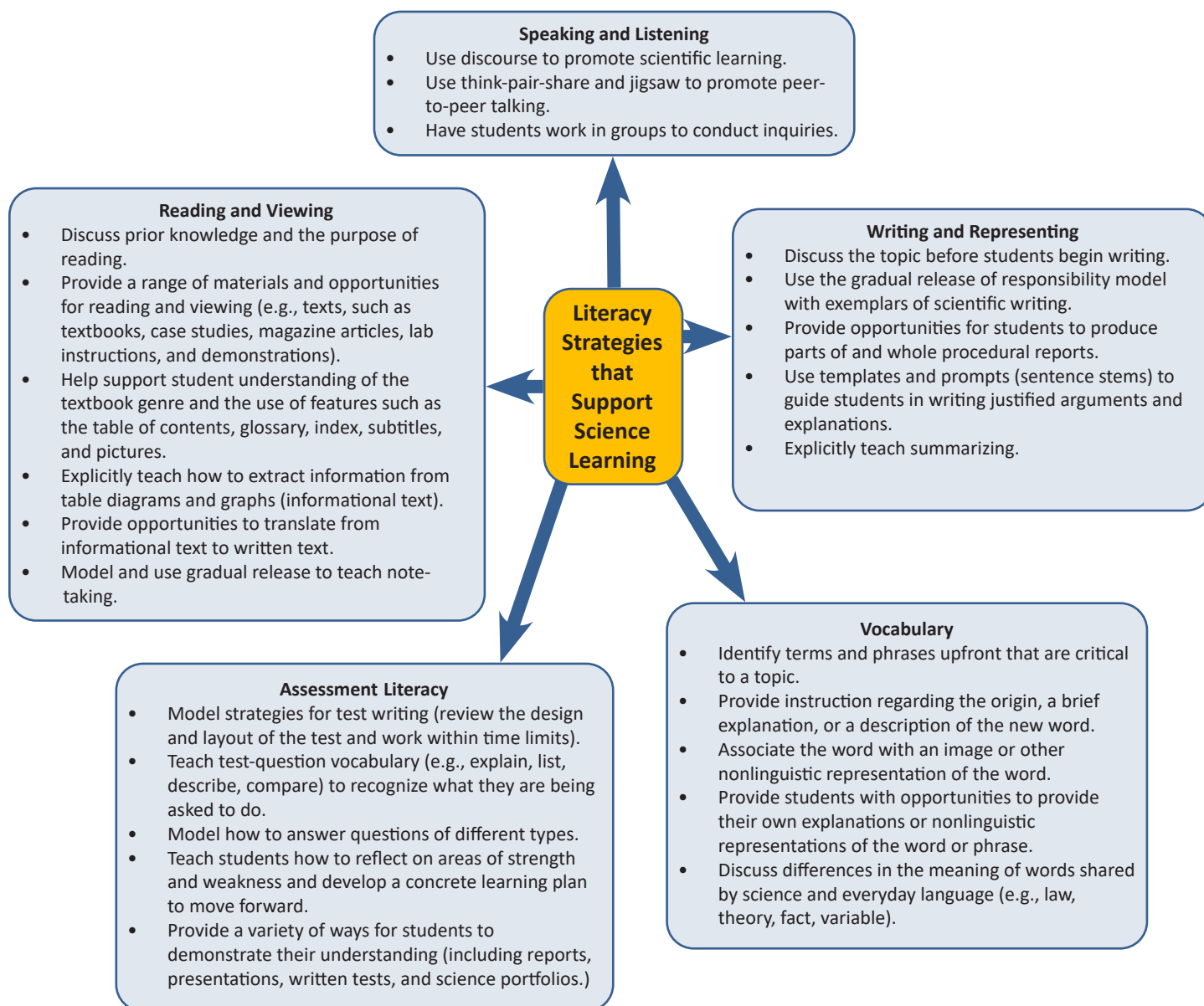
The development of the knowledge, skills, and attitudes required for scientific literacy can be described as a continuum with four key stages: emergent, early, transitional, and fluent. These stages are described through the lens of each of the four foundations of scientific literacy; subsequent stages build upon earlier ones. The continuum is based on cognitive developmental patterns for primary, elementary, middle, and high school years with the recognition that learning is neither linear nor mirrored between students.

K–12 SCIENTIFIC LITERACY CONTINUUM		Emergent	Early
Foundations of Scientific Literacy	Nature of Science <i>What is science?</i>	<ul style="list-style-type: none"> Developing an understanding that we use our senses as a way of knowing Developing an awareness that science helps us understand the natural and material world 	<ul style="list-style-type: none"> Developing an awareness of the scientific community that helps us understand the natural and material world Developing an awareness that scientists follow a process to learn about the world
	Procedural Knowledge <i>What do scientists do?</i>	<ul style="list-style-type: none"> Using their senses to learn about the natural and material world Asking questions Recording and interpreting observations Playing (exploring and exhibiting curiosity) Developing manipulative skills Exploring measurement Exploring patterns Exploring similarities and differences 	<ul style="list-style-type: none"> Exploring the scientific inquiry processes (e.g., questioning, observing, recording, analyzing, interpreting, using models) Exploring the importance of evidence and variables Investigating cause and effect Identifying similarities and differences Developing more refined understanding of measurement Exploring design Using numeric, symbolic, graphical, and linguistic modes to communicate science ideas, plans, and results
	Content Knowledge <i>What have scientists learned?</i>	<ul style="list-style-type: none"> Identifying characteristics of living things Exploring properties Exploring change 	<ul style="list-style-type: none"> Exploring science topics of personal interest Developing an appreciation for science and the vastness of its contribution to understanding our world
	Decisions and Perspectives <i>How should we apply science?</i>	<ul style="list-style-type: none"> Learning to respect self and others Controlling physical interactions Collaborating with and listening to others 	<ul style="list-style-type: none"> Extending focus beyond self and immediate environment Becoming aware of the benefits and responsibilities associated with science and technology Becoming aware of personal perspectives related to science issues Recognizing and demonstrating respect for different perspectives

Appendix A: The Scientific Continuum

Transitional	Fluent
<ul style="list-style-type: none"> Developing an understanding of science as a way of knowing (metacognition) Beginning to develop an understanding of the significance of the processes of science in determining what is, and what is not, science Beginning to critically think about scientific claims and the consequences of basing decisions on false claims 	<ul style="list-style-type: none"> Deepening understanding of science as a specific way of knowing that uses rational reasoning Deepening understanding of the significance of the processes used in science Demonstrating critical and skeptical thinking when presented with scientific and non-scientific claims in various media
<ul style="list-style-type: none"> Discovering order in the natural world by analyzing and describing patterns, with support (e.g., linear and cyclic causal patterns, proportional relationships) Developing skills for a more systematic approach to scientific inquiry Developing experiential knowledge of STEAM (science, technology, engineering, art, and mathematics) related design Developing communication strategies for science (presenting evidence and using reasoning and argumentation) reflecting about personal skills and character traits that suit STEAM-related careers 	<ul style="list-style-type: none"> Discovering, recognizing, and analyzing patterns with increasing independence Using deeper, more thorough, analysis and evaluation of design and scientific error Performing experimental and engineering design with greater independence Developing formalized communication strategies for science with more rigorous, logical argumentation and reasoning Examining science career opportunities
<ul style="list-style-type: none"> Developing a framework of understanding regarding the interdisciplinary concepts of science (matter, patterns in form and function, energy, equilibrium, change, systems, and models) and the interconnectedness of sciences and other STEAM fields 	<ul style="list-style-type: none"> Developing an understanding of foundational concepts within specialized core science (i.e., biology, chemistry, and physics) and applied science fields (e.g., agriscience, oceanography)
<ul style="list-style-type: none"> Reflecting on the risks and benefits of scientific and technological developments Deepening an understanding of perspectives Considering other perspectives when making decisions about the applications of science 	<ul style="list-style-type: none"> Critically thinking about the outcomes and applications of science with consideration of ethics Making thoughtful decisions regarding science and technology issues Critically evaluating perspectives using divergent and convergent thinking

Appendix B: Literacy Strategies that Support Science Learning



References

- Council of Atlantic Ministers of Education and Training. (2015). Atlantic Canada Framework for Essential Graduation Competencies. Retrieved November 3, 2023, from https://www.ednet.ns.ca/files/curriculum/atlantic_canada_essential_grad_competencies.pdf
- Council of Atlantic Ministers of Education and Training. (1998). *Foundation for the Atlantic Canada Science Curriculum*. Charlottetown, PE: Author.
- Councils of Ministers of Education, Canada. (1997). *Common Framework of Science Outcomes K–12*. Toronto, ON: Author. Retrieved from <https://archive.org/details/commonframework00coun>.
- Dombrowski, E., Rotenberg, L., Bick, M. (2013). *Theory of Knowledge Course Companion*. Oxford: Oxford University Press.
- Durlak, J.A., Weissberg, R.P., Dymnicki, A., Taylor, R.D., & Schellinger, K.B. (2011). The impact of enhancing students' social and emotional learning: A meta-analysis of school-based universal interventions. *Child Development*, 82, 405-432.
- Elliott, P. (2010). Science and Literacy in the Elementary Classroom [Monograph]. *What Works? Research into Practice*, 26. Retrieved from http://www.edu.gov.on.ca/eng/literacynumeracy/inspire/research/WW_science_literacy.pdf.
- Flick, L.B., Lederman, N.G. (Eds.). (2006). *Scientific Inquiry and Nature of Science: Implications for Teaching, Learning, and Teacher Education*. Netherlands: Springer Academic Publishers.
- Gauch, H.G. Jr. (2009). Science, Worldviews, and Education. *Science & Education*. 18(6-7), 667-695.
- Glickman, C. (1991). Pretending Not to Know What We Know. *Educational Leadership*. 48(8), 4-10.
- Harvey, S., Goudvis, A. (2007). *Strategies that Work: Teaching Comprehension for Understanding and Engagement*. Portland, ME: Stenhouse Publishers.
- Honouring the Truth, Reconciling for the Future: Summary of the Final Report of the Truth and Reconciliation Commission of Canada. Truth and Reconciliation Commission of Canada, 2015, www.trc.ca/assets/pdf/Honouring_the_Truth_Reconciling_for_the_Future_July_23_2015.pdf. PDF download.
- Howes, E.V., Lim, M., Campos, J. (2008). Journey into Inquiry-based Elementary Science: Literacy Practices, Questioning, and Empirical Study. *Science Education*. 93, 189-217.
- ISO, (2012). Robots and robotic devices — Vocabulary. Retrieved July 29, 2019, from <https://www.iso.org/obp/ui/#iso:std:iso:8373:ed-2:v1:en>
- Klein, P. (2008). Content Literacy [Monograph]. *What Works? Research into Practice*, 13.
- Kozak, S., Elliot, S. (2014). *Connecting the Dots, Key Stages that Transform Learning for Environmental Education, Citizenship and Sustainability*. Oshawa, ON: Maracle Press Ltd.
- Krathwal D.R. (2002). A Revision of Bloom's Taxonomy, An Overview. *Theory into Practice*. 41(4), 212-218.
- Llewellyn, D. (2013). *Teaching High School Science Through Inquiry and Argumentation*. California: Corwin.
- Marzano, R.J. (2009). Setting the Record Straight on "High-Yield Strategies". *Phi Delta Kappan*. 91(1), 30-7.

References

- Marzano, R.J., Pickering D.J., Pollock J.E. (2004). *Classroom Instruction that Works: Research-based Strategies for Increasing Student Achievement*. Alexandria, VA: Association for Supervision and Curriculum Development.
- Marzano, R.J., Toth M.D. (2014). Teaching for Rigor: A Call for a Critical Instructional Shift [Monograph]. *Learning Sciences International*. Retrieved from <http://www.marzanocenter.com/files/Teaching-for-Rigor-20140318.pdf>
- Michaels, S., Shouse, A.W., Schweingruber, H.A. (2008). *Ready, Set, Science! Putting Research to Work in K–8 Science Classrooms*. Washington, D.C.: The National Academies Press.
- National Research Council. (2012). *A Framework for K–12 Science Education: Practices, Crosscutting Concepts, and Core Ideas*. Washington, D.C.: The National Academies Press.
- Next Generation Science Standards Lead States. (2013). *Next Generation Science Standards: For States, By States*. Washington, D.C.: The National Academies Press.
- Organisation for Economic Co-operation and Development. (2013). *PISA 2015 Science Framework Draft*. Author. Retrieved from <https://www.oecd.org/pisa/pisaproducts/pisa2015draftframeworks.htm>.
- Oleckno, W.A. (2002). *Essential Epidemiology: Principles and Applications*. Illinois: Waveland Press, Inc.
- Ontario Ministry of Education. (2008). *Grades 9 and 10 Science Curriculum Document (revised)*. Ontario: The Queen's Printer of Ontario.
- Perry, M.C. (2013). Changes in Food and Habitats of Waterbirds. *Synthesis of U.S. Geological Survey Science for the Chesapeake Bay Ecosystem and Implications for Environmental Management*. 14. U.S. Department of the Interior. Retrieved from <https://pubs.usgs.gov/circ/circ1316/html/toc.html>.
- Santrampurwala, S., Lekanides, K., Rothwell, A., Rutherford, J., Trudgon R. (2013). *Theory of Knowledge for the IB Diploma*. Oxford: Oxford University Press.
- Saskatchewan Ministry of Education. (1991). *Instructional Approaches - A Framework for Professional Practice*. Saskatchewan. Author.
- Schick, T., Vaughn, L. (2014). *How to Think About Weird Things: Critical Thinking for a New Age*. New York: The McGraw-Hill Companies.
- Schmidt, B. (n.d.). STEM 101: A Primer, what is STEM? Retrieved from <https://canada2067.ca/en/articles/stem-101-what-is-stem/>
- Schmoker, M.J. (2011). *Focus: Elevating the Essentials to Radically Improve Student Learning*. Alexandria, Va: Association for Supervision and Curriculum Development.
- Sharratt, L., Fullan, M. (2012). *Putting Faces on the Data*. California:Corwin.
- Shermer, M. (2011). What is Pseudoscience?. *Scientific American*. Retrieved from: <https://www.scientificamerican.com/article/what-is-pseudoscience/>.
- Srinivasan, M. (2019) *SEL Everyday: Integrating Social and Emotional Learning with Instruction in Secondary Classrooms*. W.W. Norton & Company.

References

- "Standards for the 21st Century Learner to launch during AASL National Conference." American Library Association. 2007. <http://www.ala.org/ala/pressreleases2007/october2007/standards07.htm> (Accessed 03 Nov, 2021)
- Collaborative for Academic, Social, and Emotional Learning (CASEL). (n.d.). Home - CASEL.
- Sterman, J.D. (2000). *Business Dynamics*. Boston: McGraw-Hill, Inc.
- Tompkins, G.E., Campbell, R., Green, D., Smith, C. (2015). *Literacy for the 21st Century: a Balanced Approach (2nd edition)*. Melbourne: VIC Pearson Australia.
- University of California Museum of Paleontology. (2016). Understanding Science how science really works. Retrieved from: <http://undsci.berkeley.edu>.
- Wieman, C. (2002). PhET Interactive Simulations: University of Colorado Boulder. Retrieved from: <https://phet.colorado.edu/>.
- Weissberg, R.P. & Cascarino, J. (2013). Academic learning + social-emotional learning = national priority. *Phi Delta Kappan*, 95 (2), 8-13.
- Wiggins, G., McTigh, J. (2005). *Understanding by Design Expanded Second Edition*. Alexandria, VA: Association for Supervision and Curriculum Development
- Wiglesworth, M., Lendrum, A., Oldfield, J., Scott, A., ten Bokkel, I., Tate, K., & Emery, C. (2016). The impact of trial stage, developer involvement and international transferability on universal social and emotional learning programme outcomes: A meta-analysis. *Cambridge Journal of Education*, 46, 347-376.
- Youth Science Canada. (2011) *Smarter Science, Introducing the Framework*. Author. Retrieved from: <https://smarterscience.youthscience.ca/about-0>.