



*Family and Human Services*

# ANNUAL REPORT

2015-2016



*Department of Family and Human Services*

*Annual Report*

*For the Fiscal Year*

*April 2015 to March 2016*



## *Table of Contents*

Message from the Minister .....	1
Message de la ministre .....	3
Message from the Deputy Minister.....	5
Department Overview .....	6
Functional Organization Chart and Employee Profile .....	7
Achievements.....	8
Key Indicators for the 2015-2016 Fiscal Year .....	9
Financial Overview for the 2015-2016 Fiscal Year.....	11



## *Message from the Minister*



October 28, 2018

Honourable Antoinette Perry  
Lieutenant Governor of Prince Edward Island  
P.O. Box 846  
Charlottetown, PE C1A 7L9

May It Please Your Honour:

It is my privilege to submit our annual report for the fiscal year ending March 31, 2016.

As Minister for the Department of Family and Human Services, it is my responsibility to ensure that the Department's expenditures are managed in an effective and efficient manner. This report also fulfils my mandate to be accountable to Islanders on the activities of the Department.

This report highlights some of the many accomplishments of the Department of Family and Human Services during the 2015-2016 fiscal year. Several of these achievements in particular illustrate the Department's ongoing work to meet its mandate including:

- Housing Services implementing changes to the PEI Home Renovation Programs that aligned processes to better meet the needs of Islanders;
- Child and Family Services increased payments to Foster Parents to ensure the needs of vulnerable children are met in a caring and supportive manner; and
- The Social Assistance Program increased food and personal comfort rates to allow the Program to better meet the needs of its clients.

As well as reporting on the activities of our department during this period, this report satisfies the requirements of Section 5 of the *Rehabilitation of Disabled Persons Act* and Section 10 of the *Social Assistance Act*.

Respectfully Submitted,

A handwritten signature in black ink, appearing to be 'Tina M. Mundy', with a large, stylized loop at the end.

Tina M. Mundy  
Minister of Family and Human Services

## *Message de la ministre*



Le 28 octobre 2018

Qu'il plaise à Votre Honneur,

J'ai le privilège de présenter notre rapport annuel pour l'exercice financier qui s'est terminé le 31 mars 2016.

En tant que ministre des Services à la famille et à la personne, c'est ma responsabilité d'assurer que les dépenses ministérielles sont gérées de manière efficace et efficiente. Le présent rapport démontre également que je m'acquitte de mes fonctions de rendre des comptes aux Insulaires sur les activités du ministère.

Le présent rapport souligne certaines des nombreuses réalisations du ministère des Services à la famille et à la personne au cours de l'année financière 2015-2016. Plusieurs de ces réalisations illustrent notamment la poursuite des efforts du ministère visant la réalisation de son mandat, y compris les suivantes :

- Le Service de logement a apporté des changements aux programmes de rénovation de logements de l'Î.-P.-É. en vue d'harmoniser les processus et de mieux répondre aux besoins des Insulaires;
- Les Services à l'enfance et à la famille ont augmenté les allocations aux parents d'accueil en vue d'assurer que les besoins des enfants vulnérables soient satisfaits de façon réceptive et empathique; et
- Le Programme d'aide sociale a augmenté les allocations alimentaires et de confort personnel afin de mieux répondre aux besoins de ses clients.

En plus de rendre compte des activités de notre ministère pour cette période, ce rapport satisfait aux exigences de l'article 5 de la *Rehabilitation of Disabled Persons Act* (loi sur la



réadaptation des personnes handicapées) et de l'article 10 de la *Social Assistance Act* (loi sur l'aide sociale).

Le tout respectueusement soumis,

A handwritten signature in black ink, appearing to be 'Tina M. Mundy', with a large, stylized loop at the end.

Tina M. Mundy  
Ministre des Services à la famille et à la personne

## *Message from the Deputy Minister*



October 25, 2018

Honourable Tina Mundy  
PO Box 2000  
Charlottetown, PE C1A 7N8

Dear Minister Mundy:

It is my pleasure to provide you with the 2015-2016 annual report for the Department of Family and Human Services along with the year-end financial summary.

The Department of Family and Human Services' people and programs help Islanders when they need support the most. This report demonstrates the responsible manner in which the Department manages its fiscal and human resources in order to meet this mandate.

Once again, I would like to thank our staff and community partners for their dedicated service.

During the reporting period Ms. Teresa Hennebery served as Deputy Minister of Family and Human Services.

Sincerely,

A stylized, handwritten signature in black ink, consisting of a large, sweeping loop followed by a series of smaller, connected strokes.

Craig Dalton

Deputy Minister of Family and Human Services

## *Department Overview*

The Department of Family and Human Services has the responsibility of supporting Island citizens at times in their lives where they need assistance.

The department consists of four divisions: Child and Family Services, Social Programs, Housing Services and Corporate Support and Seniors. These divisions provide supports including: Child Protection Services, Foster Care, Adoption Services, Family Violence Prevention, Social Assistance, Disability Supports, Seniors Housing and Family Housing, Home Renovation Programs and support for the Seniors Secretariat.

### **Our Mission**

#### **To support social and economic stability for individuals, families and communities**

The Department of Family and Human Services contributes to the well being of individuals, families and communities by working collaboratively to promote the development of healthy, self-reliant individuals and to support and protect vulnerable members of the community.

### **Our Vision**

#### **“Individuals, families and communities reaching full potential.”**

The Department of Family and Human Services envisions a future where children, youth, adults and seniors are healthy, safe, secure and connected with communities. Professional and caring staff deliver programs and services that recognize each person’s worth, dignity and responsibility to themselves, their families, communities and society.

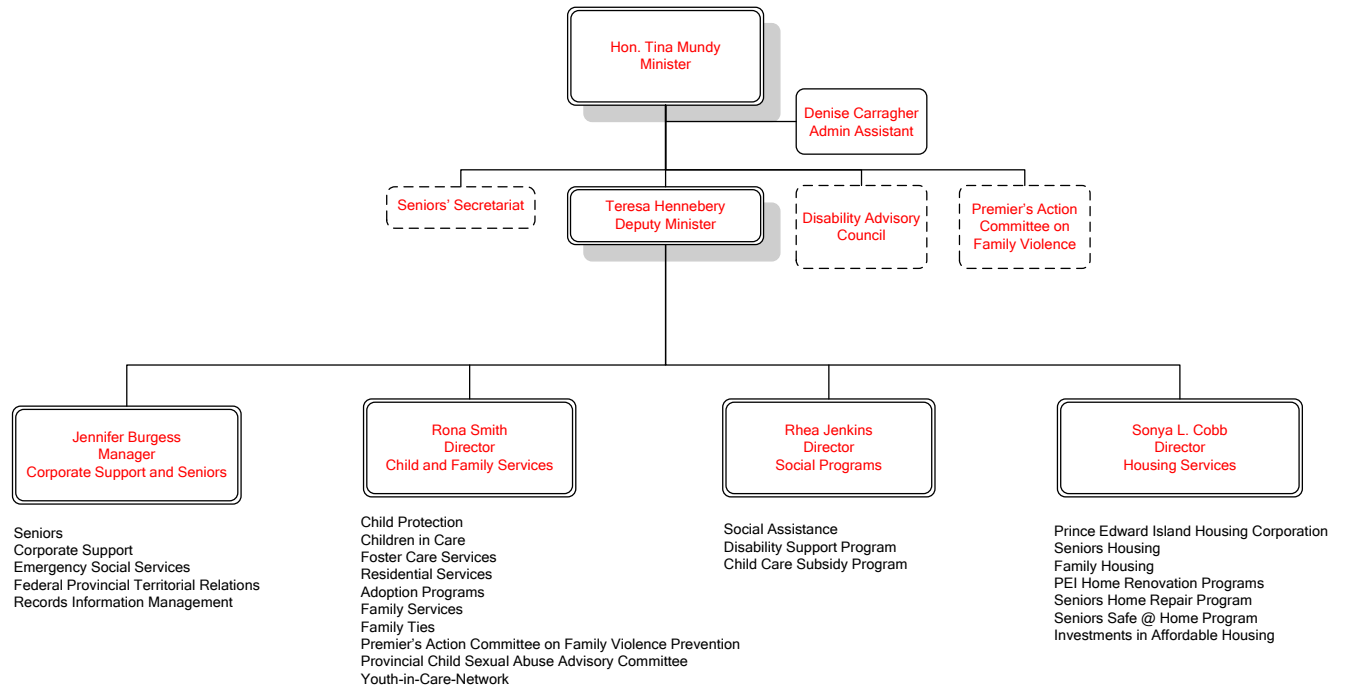
### **The Department of Family and Human Services values:**

- treating people with respect, care and fairness;
- person-centered programs that are timely, accessible and equitable;
- integrity and diversity of our employees; and
- working collaboratively through open, honest, respectful communication.

# Functional Organization Chart and Employee Profile

## Department of Family and Human Services

### Functional Organizational Chart



## Family and Human Services Employee Profile – Full Time Equivalent Positions by Division

Division	2013-2014	2014-2015	2015-2016
Child and Family Services	169.1	169.1	169.1
Social Programs	102.0	102.0	102.0
Housing Services	21.7	28.7	32.7
Corporate Support and Seniors	11.5	11.5	10.5
<b>Total Full Time Equivalent Positions</b>	<b>304.3</b>	<b>311.3</b>	<b>314.3</b>

## *Achievements*

In 2015-2016 each division within Family and Human Services made improvements to programs and services that saw the department grow in its ability to assist vulnerable persons in Prince Edward Island. These included:

- **Minister's Mandate** - Premier Wade MacLauchlan named Honourable Tina Mundy Minister of the new Department of Family and Human Services. Minister Mundy's mandate included:
  - Lead the work to establish a comprehensive Poverty Reduction Strategy;
  - Review all support programs to improve their effectiveness and efficiency in meeting the needs of the communities they serve; and
  - Renew the approach to public housing to align the supply and process with the current and expected future needs of Islanders.
- **PEI Home Renovation Programs** – Changes were made to the program to more than triple the number of homeowners who benefit (from 75 to 171).
- **Increases to Social Assistance Food Rates** – 2015-2016 was year two of a five year plan to increase social assistance food rates, a total investment of \$2.8 million.
- **Personal Comfort Allowance** – Personal comfort allowance for social assistance clients increased from \$53 to \$71 per month. This funding supports social assistance clients to help meet their personal needs.
- **Triple P** – Triple P (Positive Parenting Program), an internationally recognized, effective and positive approach to supporting parents raising their children was implemented in Prince Edward Island. This was a collaborate effort between the Departments of Family and Human Services, Education and Early Learning, and Health and Wellness.
- **Increased Rates for Foster Parents** – Increases were made to better support Foster Parents by increasing the monthly compensation provided by \$200 per month.
- **Children in Care** – Increases to Children in Care room, board and clothing rates.
- **Skills Enhancement and Mentoring Program (SEAM) and Start to Apply Right (STAR)** – Two projects funded through Family and Human Services and Workforce and Advanced Learning were piloted. These programs were directed at youth identified as high risk of not completing high school and saw 40 youth employed over the summer and mentored to develop life and work skills.

## *Key Indicators for the 2015-2016 Fiscal Year*

### **Child and Family Services**

<b>Indicator</b>	<b>2013-2014</b>	<b>2014-2015</b>	<b>2015-2016</b>
Number of Child Protection Reports Received	3,766	3,368	3,443
Number of Child Protection Investigations Opened	1,926	1,838	1,954
Number of Children who Received Child Protection Services in Their Own Homes	690	720	734
Number of Children who Received Child Protection Services in the Legal Custody and Guardianship of the Director of Child Protection	230	225	196
Focused Intervention Services	632	659	636
Average Number of Children in Care per Month	139	133	121
Average Number of Foster Homes	98	91	115
Number of Adoptions	18	15	16
Number of Applications for Post Adoption Services	20	18	15
Post Adoption Services Provided	19	27	37

### **Social Programs**

<b>Indicator</b>	<b>2013-2014</b>	<b>2014-2015</b>	<b>2015-2016</b>
Social Assistance Total Annual Cases	5,139	5,049	5,220
Social Assistance Total Annual Individuals	8,132	7,867	8,076
Social Assistance Cases <sup>1</sup>	3,734	3,758	3,835
Individuals on Social Assistance <sup>3</sup>	5,452	5,439	5,538
Children Under 18 on Social Assistance <sup>3</sup>	1,511	1,471	1,503
Single Parents on Social Assistance <sup>3</sup>	648	572	577
Single Persons on Social Assistance <sup>3</sup>	2,686	2,738	2,826
Percentage of Head of Household with a Disability on Social Assistance	68.61%	67.24%	70.00%
Total Number of Clients Accessing Disability Supports <sup>2</sup>	1,264	1,294	1,330
Total Number of Children Accessing Child Care Subsidy	1,624	1,538	1,440
Total Number of Families Accessing Child Care Subsidy	1,111	1,050	965

<sup>1,2</sup> Cases as at March 31, 2016

<sup>3</sup> as at Feb. 28, 2016

## Housing Services

Indicator	2013-2014	2014-2015	2015-2016
Number of Units in Seniors Housing	1,118	1,117	1,117
Placements in Seniors Housing	181	170	168
New Applications in Seniors Housing	380	396	448
Seniors Housing Registry	801	895	1,026
Number of Rent Supplements for Seniors	104	104	104
Number of Units in Family Housing	481	481	481
Placements in Family Housing	78	70	72
New Applications in Family Housing	295	286	275
Family Housing Registry	308	290	340
Number of Rent Supplements for Families	58	78	78
Clients Served - Seniors Home Repair Program	226	234	274
Grants Approved – Seniors Home Repair Program	\$220,300	\$253,100	\$317,000
Clients Served – Seniors Safe @ Home	N/A*	59	178
Grants Approved - Seniors Safe @ Home	N/A*	\$219,700	\$344,000
PEI Home Renovation Program Total Budget	\$1,160,000	\$1,111,500	\$1,111,500
Applications Budgeted	75	75	175
Applications Received	412	639	630
Applications Processed	127	172	171

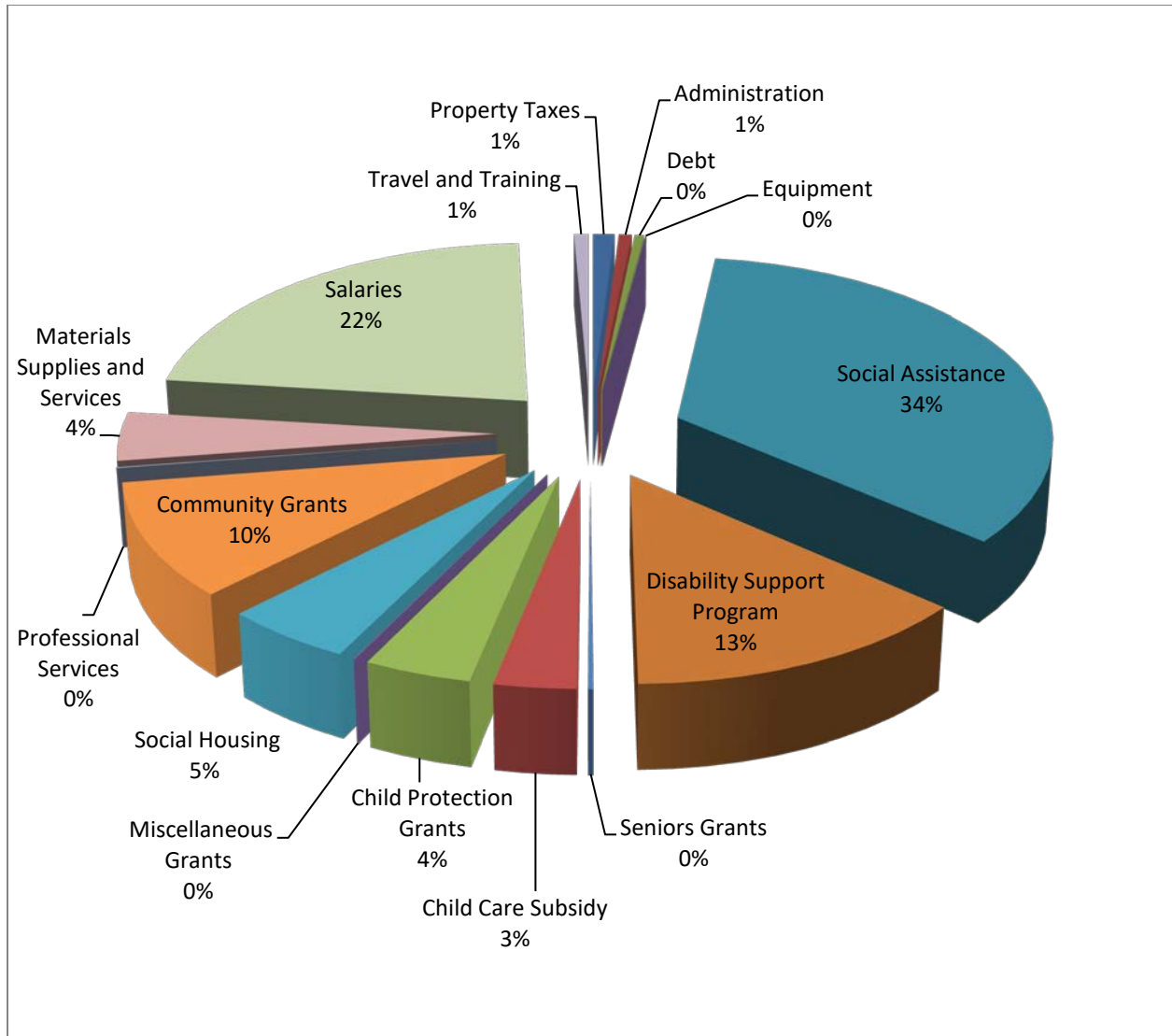
\*Seniors Safe @ Home initiated in February 2015 (fiscal year 2014-2015).

## *Financial Overview for the 2015-2016 Fiscal Year*

Program	Budget	Actuals
<b>EXPENDITURES</b>		
Housing Programs	\$11,902,000	\$11,921,000
Seniors Programs	347,000	306,000
Corporate Support	797,000	797,000
Child and Family Services	18,636,000	19,065,000
Social Programs	62,523,000	64,576,000
Total	\$94,205,000	\$96,665,000
<b>REVENUES</b>		
Housing Programs	10,352,000	11,270,000
Seniors Programs	-	-
Corporate Support	-	-
Child and Family Services	644,000	832,000
Social Programs	1,376,000	1,376,000
Total	12,372,000	13,478,000
<b>TOTAL NET</b>	<b>\$81,833,000</b>	<b>\$83,187,000</b>



## 2015-2016 Expenditures by Expense Type



For more information please contact  
The Department of Family and Human Services  
P.O. Box 2000, Charlottetown PE C1A 7N8  
902-620-3777

Information supplémentaire :  
Ministère des Services à la famille et à la personne  
C.P. 2000, Charlottetown (Î.-P.-É.) C1A 7N8  
902-620-3777