



May 2023

Prince Edward Island Population Projections 2023 – 2062

Population projections are a fundamental tool to understand the trends in the overall size and composition of a population. Projections are prepared annually by the PEI Statistics Bureau to provide organizations with a basis on which to analyze and make planning decisions on issues that are population dependent, such as estimating the future demand for schools, hospitals, long-term care, and the size of the labour force.

Population Projection Highlights

Under the scenario considered:

- PEI's population is projected to increase to 199,006 by July 1, 2030 and rise to 297,965 by July 1, 2062. (see Diagram 1)
- Beginning in 2016, increased immigration helped to reverse the decline in the working age population, which is now projected to increase to 198,400 by 2062. After reaching 97,905 in 2011, the total working age population of persons aged 15 to 64 began to decline. (see Diagram 8)
- Natural increase (births minus deaths), which was adding nearly 1,000 people per year in the late 70's, has since dropped to near or below zero in recent years. Immigration is projected to increase the number of women 15 to 40 years old and will in turn increase the number of births. This may be enough to turn natural increase positive again for the near future, however, the projected increase in the number of deaths is projected to outpace births once again by 2034. (see Diagram 2)
- International and inter-provincial migration will continue to have a large impact on population growth or decline. Diagram 5 shows the trend in past and projected levels of international migration while interprovincial migration trends are shown in Diagram 6.
- PEI Statistics Bureau's population projection is higher than Statistics Canada's high growth scenario due to a more recent (and higher) starting point, coupled with an overall increase in the immigration level.

Diagram 1

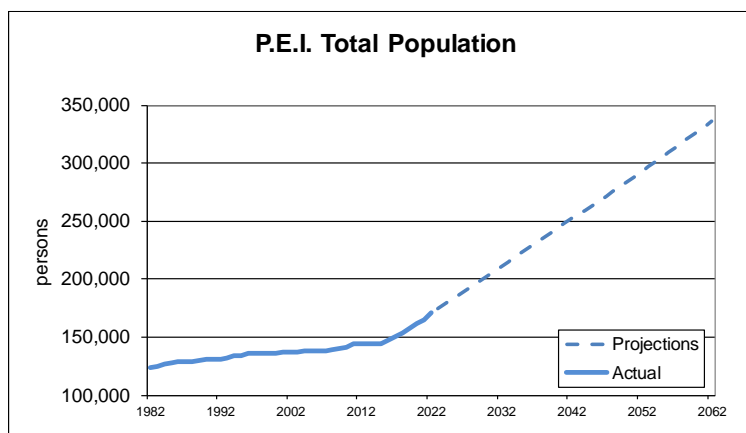


Diagram 2

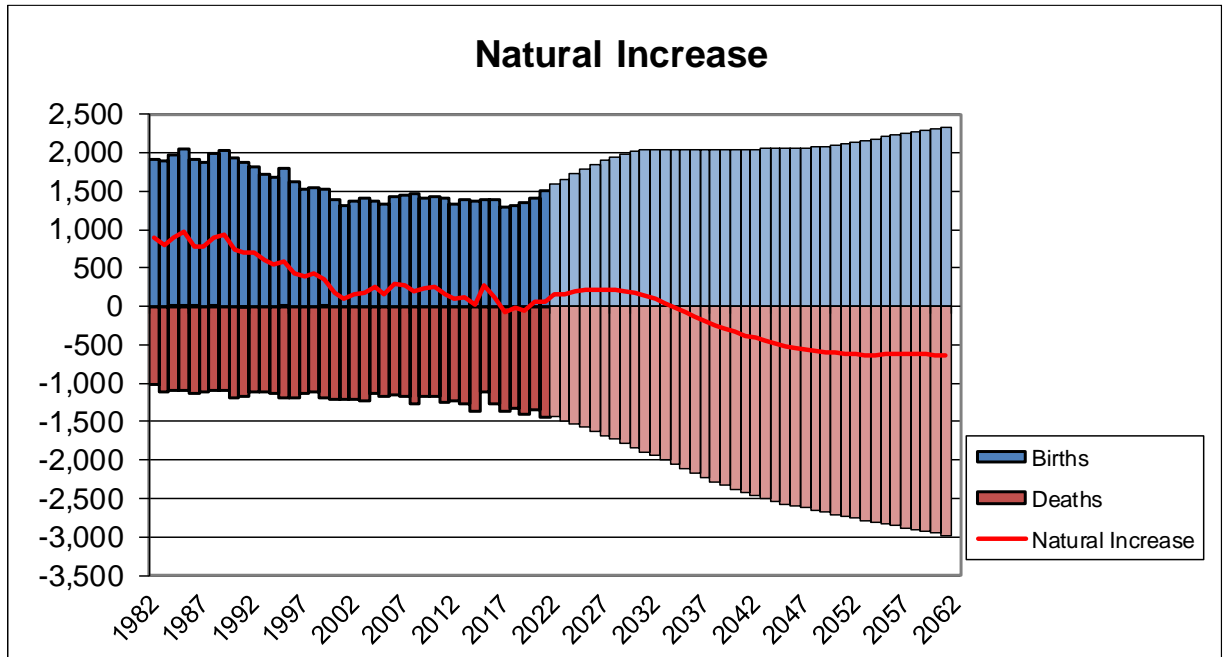


Diagram 3

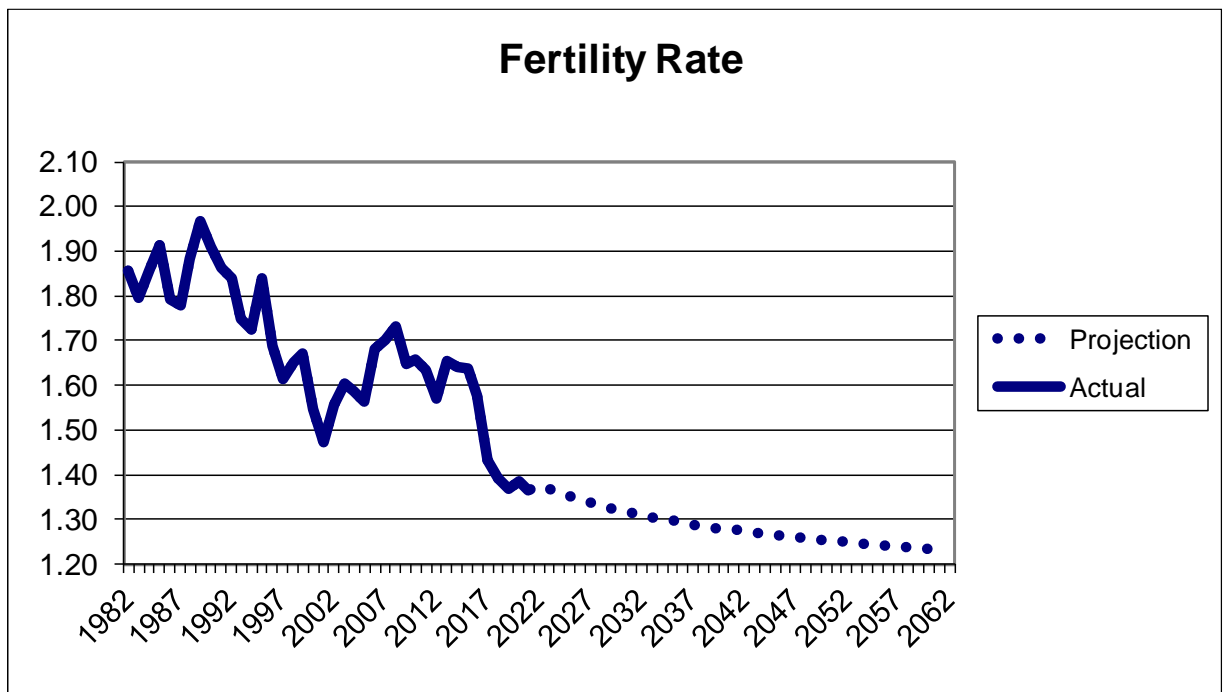


Diagram 4

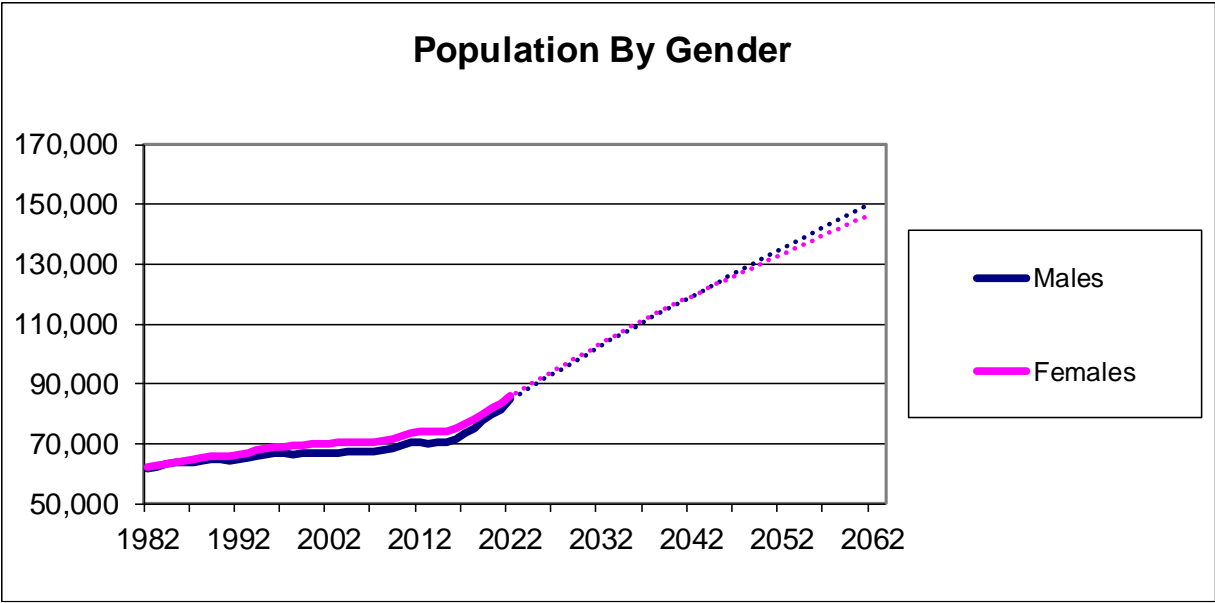


Diagram 5

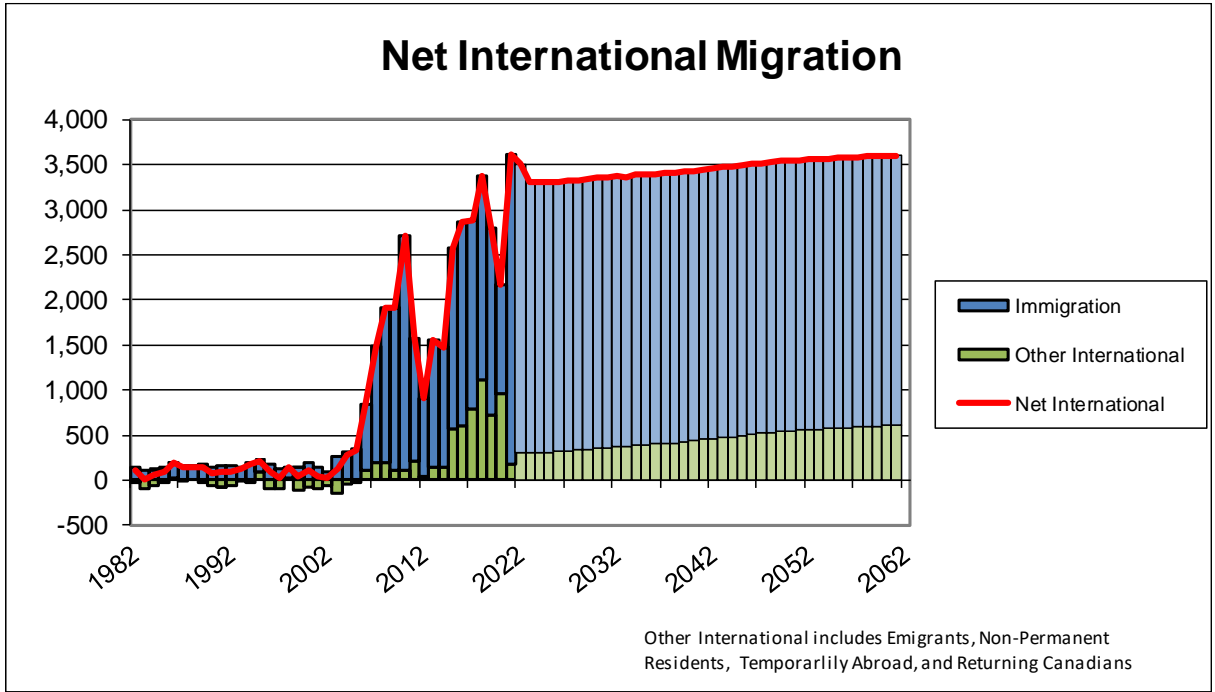


Diagram 6

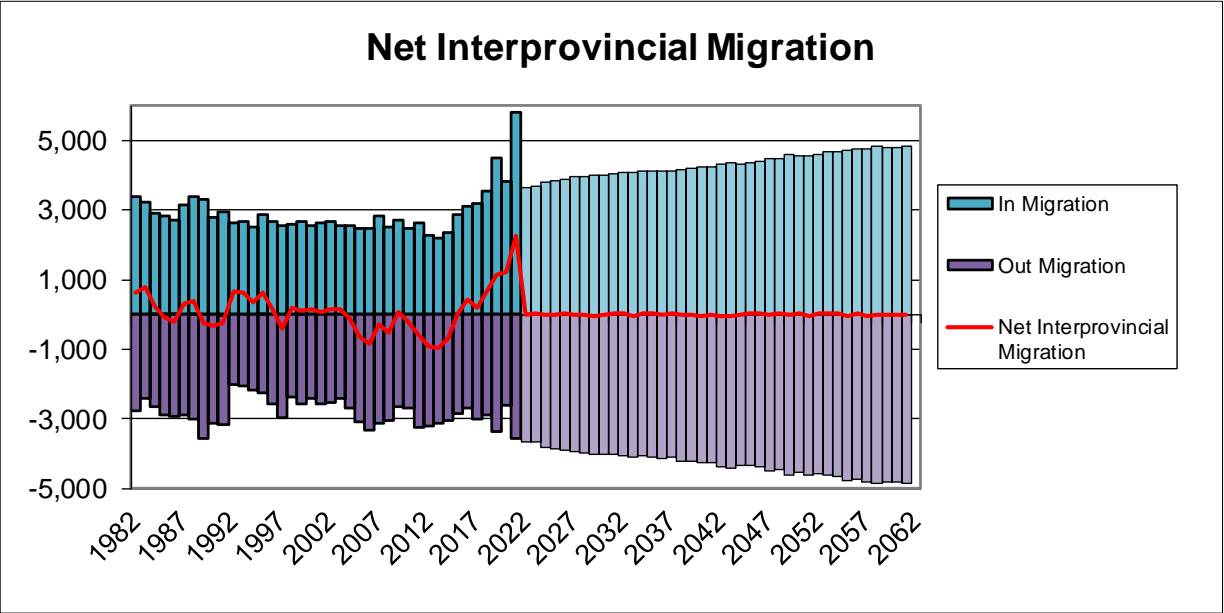
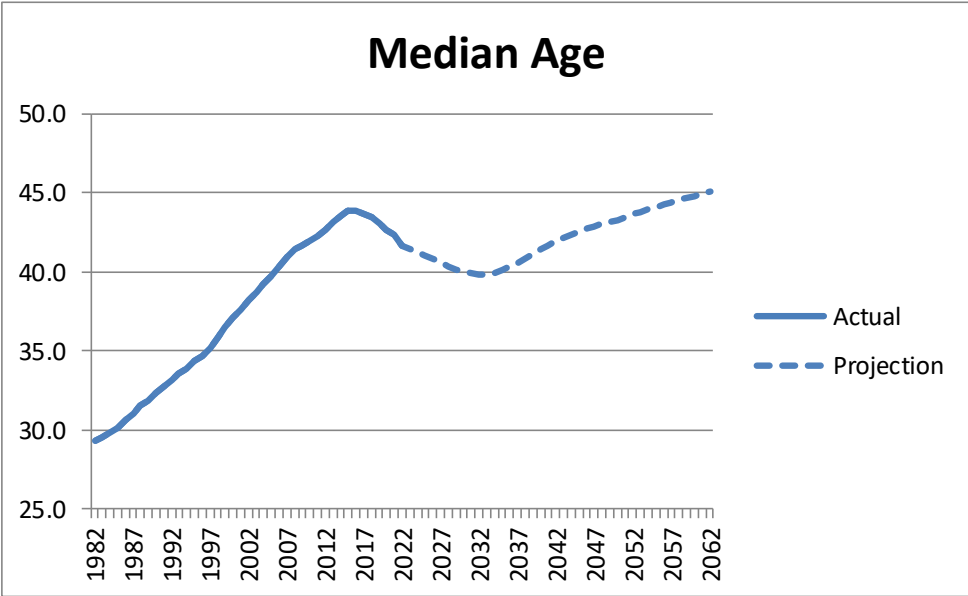


Diagram 7



Components of Population Growth, 1982-2022

In order to formulate population projections, we must first look at trends of the past. Annual population growth on PEI has averaged 0.8 per cent from 1982 to 2022. From 1982 to 1997, the growth rate averaged 0.6 per cent. The following decade, 1998 to 2007, the average annual population growth rate was just 0.1 per cent, with population declines in 3 of those 10 years. In more recent years, from 2008 to 2022, this rate of growth began to increase to reach an average of 1.4 per cent. PEI's population grew by 2.5 per cent in 2020, 2.1 per cent in 2021, and 3.6 per cent in 2022.

Natural increase (births minus deaths) has been steadily declining since the late 70's. An aging population and declining birth rates have resulted in an increase in the number of deaths and a lower number of annual births. Over the period 1982 to 2022, natural increase was highest in 1985-86 at 964 and lowest in 2016-17 at -73. The fertility rate declined during the period of 1982 to 2002, from a peak of 1.97 in 1989-90 to a low of 1.47 in 2001-02. The years following 2002 showed slight increases, climbing back to 1.73 by 2008-09. Since 2008, the fertility rate began to decline once again, reaching 1.37 in 2021-22.

Inter-provincial migration has tended to go in cycles, with periods of net loss followed by periods of net gain. Despite these periods of net gains, on average over the period being examined (1982 to 2022), PEI has shown a net gain in inter-provincial migration. Over the past 10 years (2012-13 to 2021-22), PEI had a net gain of 3,419 people due to inter-provincial migration.

Table 1 on the following page shows PEI's annual population estimates and components of growth from 1982 to 2022.

Population Projections 2022-2061

Population change is related to many socio-economic factors, many of which cannot be predicted with certainty. The following population projections were compiled assuming that historical trends for births, deaths, and interprovincial migration seen through the 1982 to 2022 period will continue. International migration forecasts are developed in consultation with relevant stakeholders as a most likely scenario based on maintaining current policies.

“PEI has seen a tremendous growth in immigration with increasing nomination levels for both 2021 and 2022 as compared to 2020. The Province continues to support workforce in PEI by nominating individuals for permanent residency who have been living and working in PEI, especially those in essential service industries. During the year, our immigration programs supported 370 employers in PEI across a variety of sectors including healthcare, trucking, manufacturing and processing, agriculture, and information technology. We anticipate that our annual nomination levels will continue to increase in the future.”¹.

For the purpose of these projections, it is assumed that international immigration will increase over levels seen in recent years. It is anticipated that PEI's nomination levels will increase as Canada's national targets for immigration are increasing in the coming years. The 2022 projection model was based on 2,500 immigrants entering PEI each year. This number has been increased to 3,000 for the 2023 projections.

¹ Island Investment Development Inc., Annual Report 2021-22, December 2022.

Due to the difficulty in projecting inter-provincial migration flows, the projection scenario considered assumes near net zero inter-provincial migration.

Increased immigration will have an effect on the median age, as we have seen since 2017. Approximately 70 per cent of immigrants who came to PEI over the past 10 years were under 40. The increase in the number of women under the age of 40 will in turn increase births. This influx of younger people and increased births is projected to decrease the median age slightly in the near future. However, as the senior population remains the fastest growing age cohort, the median age is projected to begin to rise again in 2034 and to continue to increase through the end of the projection period (see Diagram 7).

The projected fertility rate is based on the most recent 10 year trend (2013 to 2022). The fertility rate averaged 1.5 over that period, however it has declined from a high of 1.7 in 2014 to a low of 1.4 in 2022. Following this trend, the rate is projected to be near 1.2 by 2062. A replacement fertility rate of 2.1 births per woman required for a stable population.

Table 1 shows PEI’s annual population estimates and components of growth from 1982 to 2022, as provided by Statistics Canada, while Table 2 shows PEI’s annual population projections and components of growth from 2023 to 2062. Tables 3 and 4 show the annual population estimates and projections by age group.

Table 1 – Components of Growth, 1982 – 2022

| Year | Population July 1 | July 1 - June 30 | | | | | | | |
|------|----------------------|------------------|--------|-----|------------|-------------------------|-----------------|--------------|----------|
| | | Natural Increase | | | Immigrants | Other International* | Interprovincial | | Residual |
| | | Births | Deaths | Net | | | In-Migrants | Out-Migrants | |
| 1982 | 123,588 | 1,910 | 1,011 | 899 | 139 | -24 | 3,403 | 2,767 | 136 |
| 1983 | 125,102 | 1,895 | 1,106 | 789 | 103 | -92 | 3,219 | 2,422 | 136 |
| 1984 | 126,563 | 1,977 | 1,090 | 887 | 116 | -61 | 2,904 | 2,654 | 136 |
| 1985 | 127,619 | 2,055 | 1,091 | 964 | 129 | -30 | 2,830 | 2,906 | 170 |
| 1986 | 128,436 | 1,916 | 1,129 | 787 | 165 | 25 | 2,720 | 2,925 | 567 |
| 1987 | 128,641 | 1,883 | 1,112 | 771 | 165 | -14 | 3,163 | 2,868 | 569 |
| 1988 | 129,289 | 1,984 | 1,085 | 899 | 139 | 12 | 3,390 | 3,009 | 567 |
| 1989 | 130,153 | 2,028 | 1,103 | 925 | 181 | -34 | 3,322 | 3,575 | 568 |
| 1990 | 130,404 | 1,940 | 1,199 | 741 | 149 | -68 | 2,809 | 3,134 | 532 |
| 1991 | 130,369 | 1,866 | 1,167 | 699 | 165 | -73 | 2,937 | 3,174 | 96 |
| 1992 | 130,827 | 1,820 | 1,122 | 698 | 161 | -67 | 2,649 | 1,995 | 96 |
| 1993 | 132,177 | 1,725 | 1,120 | 605 | 139 | -10 | 2,688 | 2,066 | 96 |
| 1994 | 133,437 | 1,686 | 1,139 | 547 | 200 | -22 | 2,514 | 2,165 | 96 |
| 1995 | 134,415 | 1,788 | 1,198 | 590 | 127 | 89 | 2,882 | 2,244 | 122 |
| 1996 | 135,737 | 1,616 | 1,192 | 424 | 185 | -91 | 2,694 | 2,558 | 296 |
| 1997 | 136,095 | 1,530 | 1,132 | 398 | 123 | -99 | 2,570 | 2,986 | 297 |
| 1998 | 135,804 | 1,539 | 1,108 | 431 | 125 | 24 | 2,579 | 2,386 | 296 |
| 1999 | 136,281 | 1,529 | 1,182 | 347 | 142 | -107 | 2,662 | 2,558 | 297 |
| 2000 | 136,470 | 1,381 | 1,209 | 172 | 189 | -73 | 2,567 | 2,402 | 258 |
| 2001 | 136,665 | 1,313 | 1,205 | 108 | 145 | -102 | 2,639 | 2,577 | -2 |
| 2002 | 136,880 | 1,374 | 1,217 | 157 | 89 | -65 | 2,686 | 2,521 | -1 |
| 2003 | 137,227 | 1,403 | 1,225 | 178 | 268 | -139 | 2,570 | 2,426 | -2 |
| 2004 | 137,680 | 1,371 | 1,126 | 245 | 312 | -36 | 2,537 | 2,676 | -2 |
| 2005 | 138,064 | 1,329 | 1,165 | 164 | 352 | -20 | 2,460 | 3,099 | 54 |
| 2006 | 137,867 | 1,428 | 1,143 | 285 | 738 | 105 | 2,485 | 3,334 | 435 |
| 2007 | 137,711 | 1,447 | 1,166 | 281 | 1,282 | 202 | 2,821 | 3,112 | 436 |
| 2008 | 138,749 | 1,471 | 1,274 | 197 | 1,723 | 193 | 2,522 | 3,058 | 435 |
| 2009 | 139,891 | 1,407 | 1,177 | 230 | 1,792 | 116 | 2,709 | 2,649 | 435 |
| 2010 | 141,654 | 1,428 | 1,177 | 251 | 2,611 | 108 | 2,494 | 2,704 | 451 |
| 2011 | 143,963 | 1,404 | 1,250 | 154 | 1,375 | 206 | 2,620 | 3,238 | 550 |
| 2012 | 144,530 | 1,339 | 1,239 | 100 | 863 | 50 | 2,294 | 3,195 | 548 |
| 2013 | 144,094 | 1,397 | 1,270 | 127 | 1,406 | 146 | 2,198 | 3,139 | 549 |
| 2014 | 144,283 | 1,374 | 1,359 | 15 | 1,341 | 137 | 2,367 | 3,049 | 548 |
| 2015 | 144,546 | 1,397 | 1,114 | 283 | 2,015 | 567 | 2,874 | 2,844 | 472 |
| 2016 | 146,969 | 1,387 | 1,272 | 115 | 2,263 | 611 | 3,124 | 2,680 | 0 |
| 2017 | 150,402 | 1,295 | 1,368 | -73 | 2,102 | 788 | 3,193 | 3,016 | 0 |
| 2018 | 153,396 | 1,307 | 1,326 | -19 | 2,267 | 1,113 | 3,562 | 2,900 | 0 |
| 2019 | 157,419 | 1,344 | 1,405 | -61 | 2,079 | 718 | 4,500 | 3,350 | 0 |
| 2020 | 161,305 | 1,412 | 1,352 | 60 | 1,209 | 964 | 3,846 | 2,626 | 0 |
| 2021 | 164,758 | 1,499 | 1,443 | 56 | 3,436 | 178 | 5,823 | 3,563 | 0 |
| 2022 | 170,688 | | | | | | | | |

* Other International includes International Emigrants, Canadians Temporarily Abroad, Returning Canadians, and Non-Permanent Residents

Table 2 – Projections, Total Population and Components of Growth 2023 – 2062

| | | July 1 - June 30 | | | | | | | |
|------|----------------------|------------------|--------|------|------------|-------------------------|-----------------|--------------|----------|
| Year | Population July 1 | Natural Increase | | | Immigrants | Other International* | Interprovincial | | Residual |
| | | Births | Deaths | Net | | | In-Migrants | Out-Migrants | |
| 2022 | | 1,589 | 1,440 | 149 | 3,206 | 308 | 3,631 | 3,656 | 0 |
| 2023 | 174,326 | 1,653 | 1,493 | 160 | 3,000 | 304 | 3,697 | 3,668 | 0 |
| 2024 | 177,819 | 1,724 | 1,535 | 189 | 3,000 | 305 | 3,815 | 3,811 | 0 |
| 2025 | 181,317 | 1,789 | 1,572 | 217 | 3,000 | 310 | 3,859 | 3,859 | 0 |
| 2026 | 184,844 | 1,847 | 1,624 | 223 | 3,000 | 318 | 3,896 | 3,882 | 0 |
| 2027 | 188,399 | 1,900 | 1,678 | 222 | 3,000 | 325 | 3,950 | 3,953 | 0 |
| 2028 | 191,943 | 1,945 | 1,721 | 224 | 3,000 | 333 | 3,985 | 3,992 | 0 |
| 2029 | 195,493 | 1,983 | 1,782 | 201 | 3,000 | 343 | 4,003 | 4,034 | 0 |
| 2030 | 199,006 | 2,015 | 1,839 | 176 | 3,000 | 354 | 4,001 | 4,011 | 0 |
| 2031 | 202,526 | 2,034 | 1,891 | 143 | 3,000 | 356 | 4,046 | 4,027 | 0 |
| 2032 | 206,044 | 2,046 | 1,941 | 105 | 3,000 | 372 | 4,084 | 4,051 | 0 |
| 2033 | 209,554 | 2,048 | 1,998 | 50 | 3,000 | 368 | 4,084 | 4,118 | 0 |
| 2034 | 212,938 | 2,044 | 2,052 | -8 | 3,000 | 388 | 4,110 | 4,058 | 0 |
| 2035 | 216,370 | 2,042 | 2,110 | -68 | 3,000 | 392 | 4,140 | 4,104 | 0 |
| 2036 | 219,730 | 2,036 | 2,173 | -137 | 3,000 | 403 | 4,130 | 4,152 | 0 |
| 2037 | 222,974 | 2,037 | 2,225 | -188 | 3,000 | 404 | 4,143 | 4,111 | 0 |
| 2038 | 226,222 | 2,038 | 2,284 | -246 | 3,000 | 414 | 4,177 | 4,199 | 0 |
| 2039 | 229,368 | 2,040 | 2,334 | -294 | 3,000 | 426 | 4,212 | 4,234 | 0 |
| 2040 | 232,478 | 2,044 | 2,377 | -333 | 3,000 | 437 | 4,237 | 4,266 | 0 |
| 2041 | 235,553 | 2,049 | 2,427 | -378 | 3,000 | 452 | 4,245 | 4,253 | 0 |
| 2042 | 238,619 | 2,047 | 2,461 | -414 | 3,000 | 463 | 4,330 | 4,373 | 0 |
| 2043 | 241,625 | 2,054 | 2,502 | -448 | 3,000 | 474 | 4,372 | 4,404 | 0 |
| 2044 | 244,619 | 2,054 | 2,534 | -480 | 3,000 | 484 | 4,339 | 4,347 | 0 |
| 2045 | 247,615 | 2,053 | 2,575 | -522 | 3,000 | 501 | 4,372 | 4,330 | 0 |
| 2046 | 250,636 | 2,060 | 2,596 | -536 | 3,000 | 510 | 4,416 | 4,395 | 0 |
| 2047 | 253,631 | 2,063 | 2,619 | -556 | 3,000 | 521 | 4,490 | 4,481 | 0 |
| 2048 | 256,605 | 2,071 | 2,647 | -576 | 3,000 | 533 | 4,488 | 4,454 | 0 |
| 2049 | 259,596 | 2,080 | 2,672 | -592 | 3,000 | 542 | 4,585 | 4,604 | 0 |
| 2050 | 262,527 | 2,099 | 2,705 | -606 | 3,000 | 550 | 4,564 | 4,537 | 0 |
| 2051 | 265,498 | 2,113 | 2,726 | -613 | 3,000 | 556 | 4,570 | 4,621 | 0 |
| 2052 | 268,390 | 2,135 | 2,761 | -626 | 3,000 | 564 | 4,610 | 4,562 | 0 |
| 2053 | 271,376 | 2,156 | 2,789 | -633 | 3,000 | 569 | 4,673 | 4,634 | 0 |
| 2054 | 274,351 | 2,181 | 2,817 | -636 | 3,000 | 570 | 4,679 | 4,658 | 0 |
| 2055 | 277,306 | 2,206 | 2,832 | -626 | 3,000 | 579 | 4,720 | 4,755 | 0 |
| 2056 | 280,224 | 2,233 | 2,854 | -621 | 3,000 | 583 | 4,770 | 4,753 | 0 |
| 2057 | 283,203 | 2,257 | 2,879 | -622 | 3,000 | 587 | 4,770 | 4,806 | 0 |
| 2058 | 286,132 | 2,280 | 2,905 | -625 | 3,000 | 594 | 4,824 | 4,837 | 0 |
| 2059 | 289,088 | 2,301 | 2,921 | -620 | 3,000 | 596 | 4,792 | 4,797 | 0 |
| 2060 | 292,059 | 2,319 | 2,951 | -632 | 3,000 | 604 | 4,818 | 4,830 | 0 |
| 2061 | 295,019 | 2,337 | 2,982 | -645 | 3,000 | 605 | 4,838 | 4,852 | 0 |
| 2062 | 297,965 | | | | | | | | |

* Other International includes International Emigrants, Canadians Temporarily Abroad, Returning Canadians, and Non-Permanent Residents

Age Structure

- In 1982 the median age² in PEI was 29.3. By 2015, median age had risen to a peak of 43.9. In 2017, with an increase in immigration of younger people, this began to decline, reaching 41.7 by 2022. The median age for the province is projected to continue to decline to 39.8 in 2032, before rising to 45.1 by 2062.
- The number of people aged 65 and over in 2022 was 34,632. This is projected to rise to 44,053 by 2032, 47,670 by 2042, 50,815 by 2052, and 62,409 by 2062.
- In 2022, the number of people 75 and over was 14,373. There were 7.7 people of working age per one person 75 and over. This age group is projected to increase by 73.2 per cent over the next 15 years, reaching 24,888 by 2037. At that time, it is projected that there will only be 5.8 people of working age per one person 75 and over. This ratio is then projected to increase once again to 6.8 by 2052 and remain stable to 2062.
- In 2022, the working age population (between 15 and 64) was 111,072, or 65.1 per cent of the total population. 2022 marked the seventh consecutive year of increase following declines each year from 2012 to 2015. With immigration efforts, this age group is projected to increase to 132,500 by 2032, 156,467 by 2042, 182,452 by 2052 and to 198,400 by 2062. (see Diagram 9)
- Although the number of working age people is projected to increase, their percentage of the total population is projected to continue to decline to a low of 64.2 per cent in 2030, before beginning to increase to 65.6 per cent in 2042, 68.0 per cent in 2052 and declining once again to 66.6 per cent by 2062.
- The number of children under 15 years old declined from 30,254 in 1982 to a low of 22,707 in 2015. Since 2015, this age group has increased for seven consecutive years, reaching 24,984 in 2022. Over the period considered, this number is projected to increase steadily, reaching 37,156 by 2062. (see Diagram 8).
- The total dependency ratio is the number of persons under age 15 and those aged 65 and older shown as a percentage of persons aged 15 to 64. It is the sum of the youth dependency ratio and the senior dependency ratio and represents the relative size of the population being supported by the working age population. In 1982, the total dependency ratio was 58.2 per cent. By 2007, this had reached an all-time low of 46.8 per cent. Due to an increase in seniors, the total dependency ratio increased to 53.7 per cent by 2022. The ratio is projected to steadily increase, reaching 55.9 per cent by 2030, before declining to 50.2 per cent by 2062. Diagram 10 shows the dependency ratio for PEI since 1982 and projections to 2062.
- Since 1982, the youth dependency ratio has fallen from 38.7 per cent to a low of 22.5 per cent in 2022. This is projected to decline to 18.7 per cent by 2062. Over the same time period, the senior dependency ratio has increased from 19.5 per cent in 1982 to 31.2 per cent in 2022. This is projected to continue to increase over the next 8 years, reaching 33.7 per cent in 2030, before declining to 27.6 per cent by 2054, and increasing once again reaching 31.5 per cent by 2062.
- The aging of the population can be seen most evidently by looking at the age pyramid diagrams, which show the proportion of the population by gender and age groups. (Diagrams 11A –C)

² The median age is the age at which half the population is older and half the population is younger.

Diagram 8

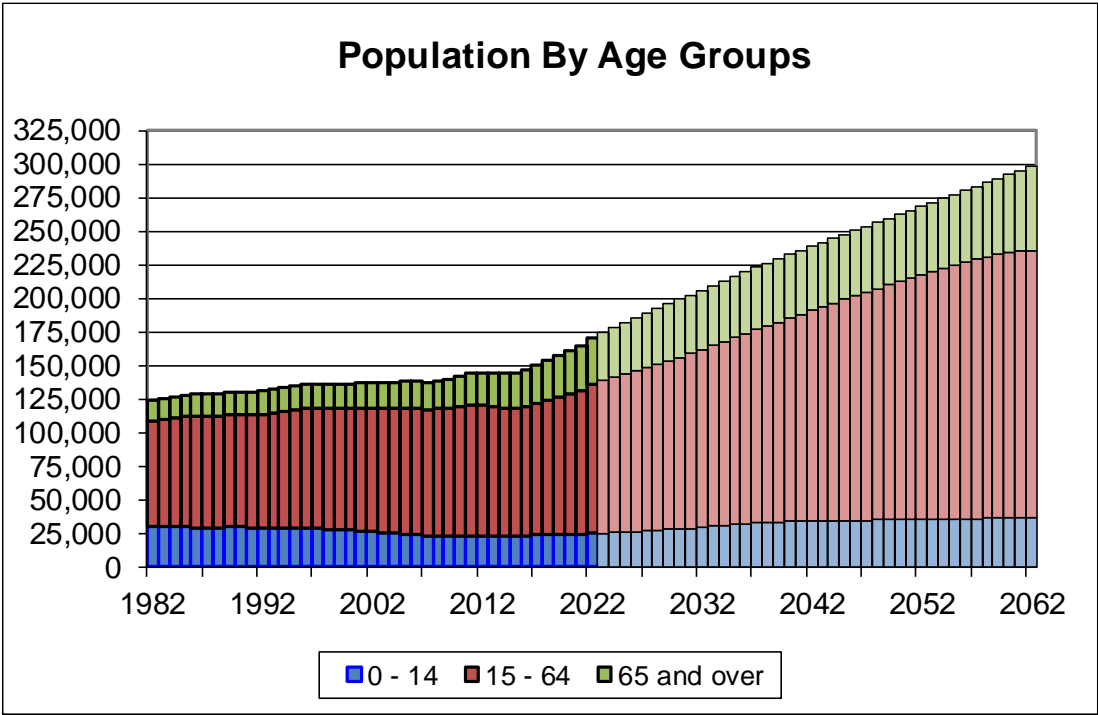


Diagram 9

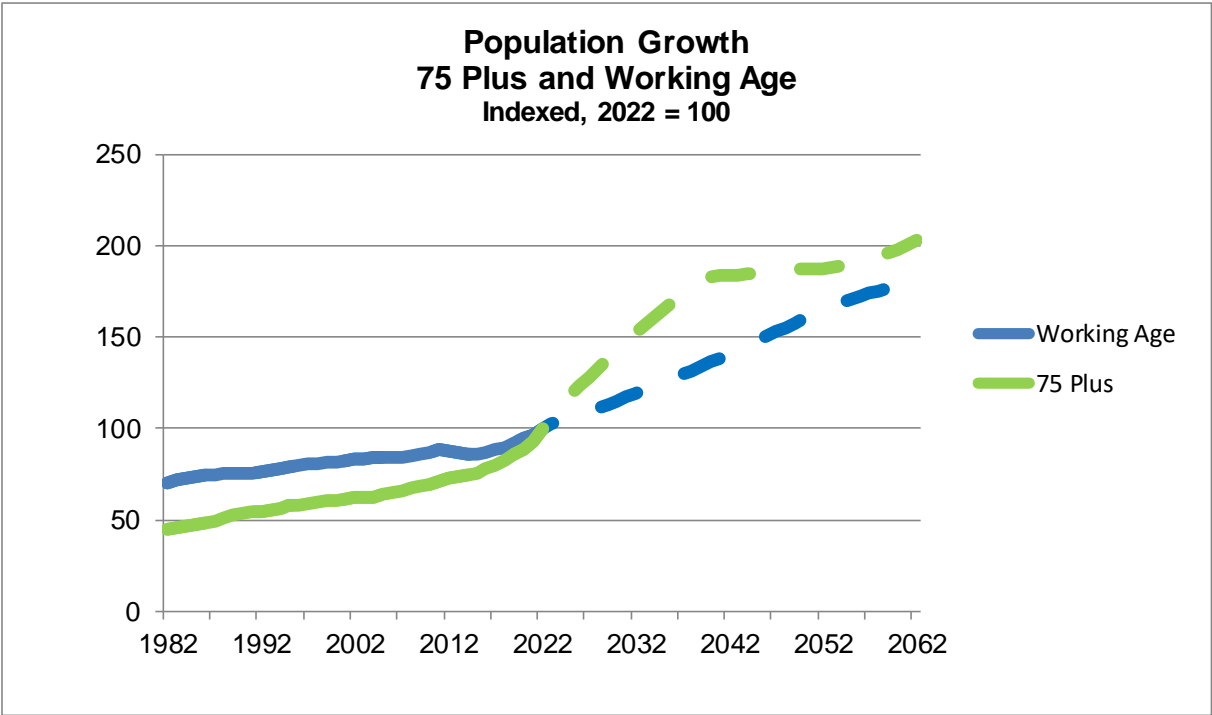
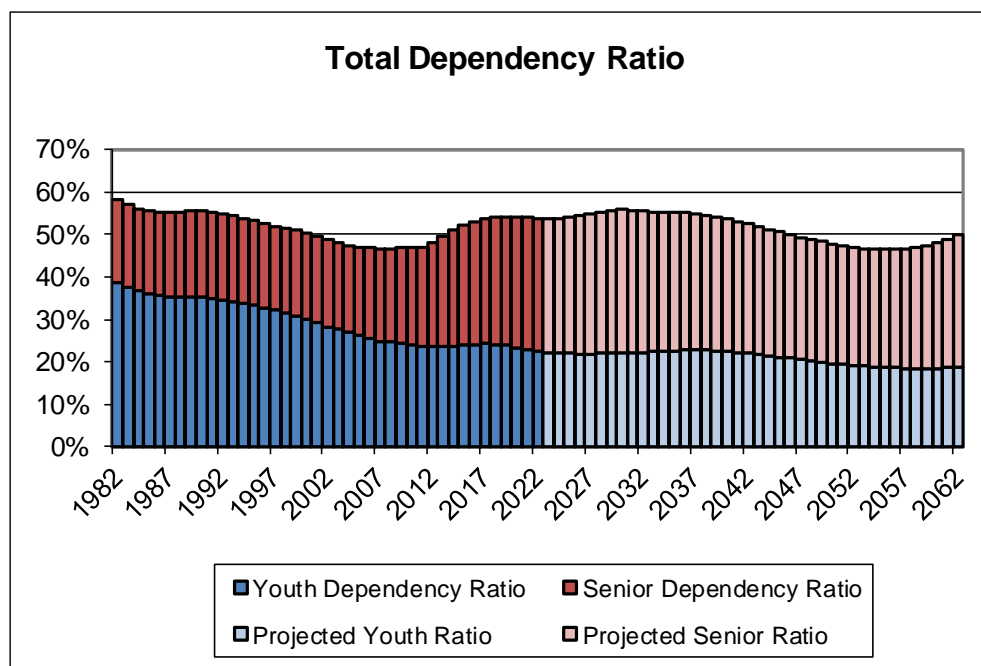


Diagram 10



Age Pyramids
Diagram 11a

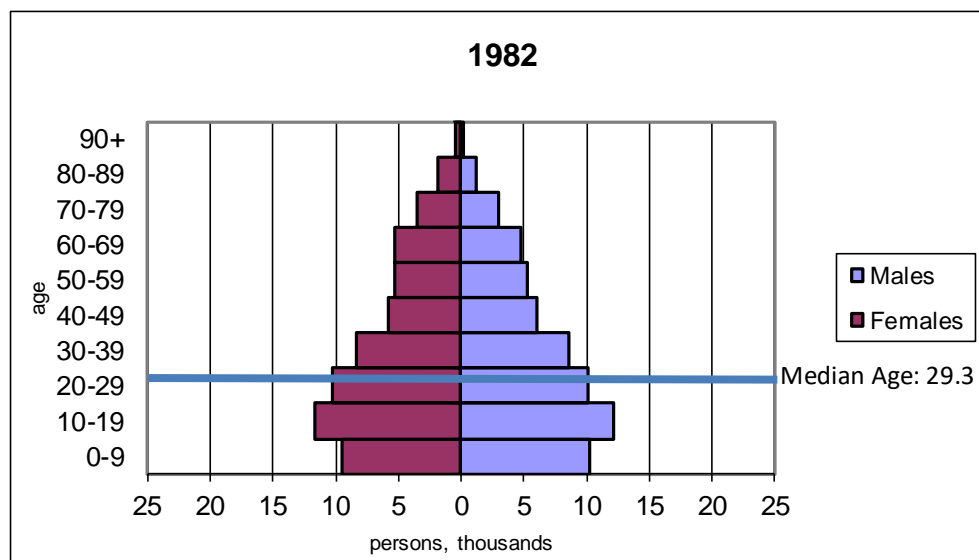


Diagram 11b – Current Year

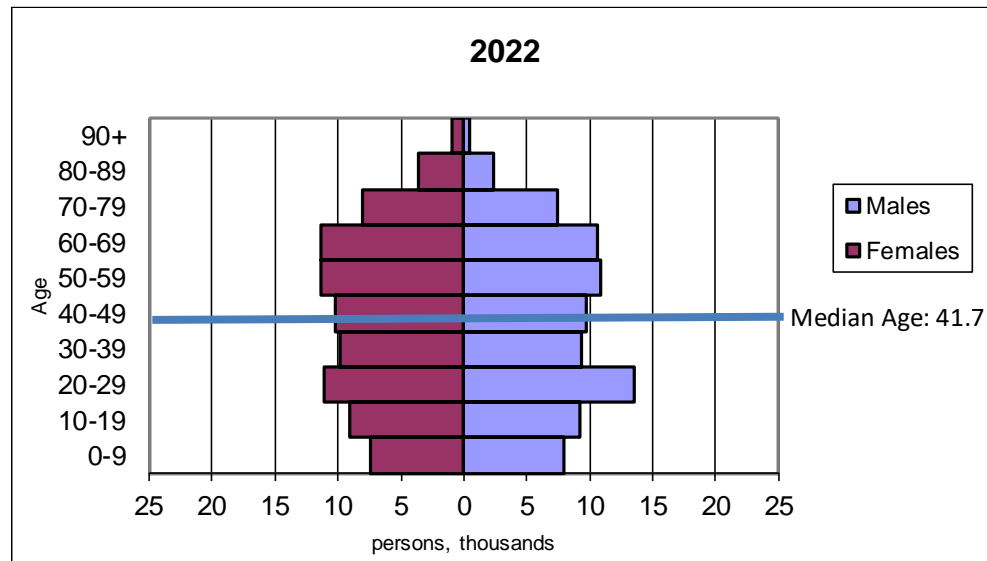


Diagram 11c

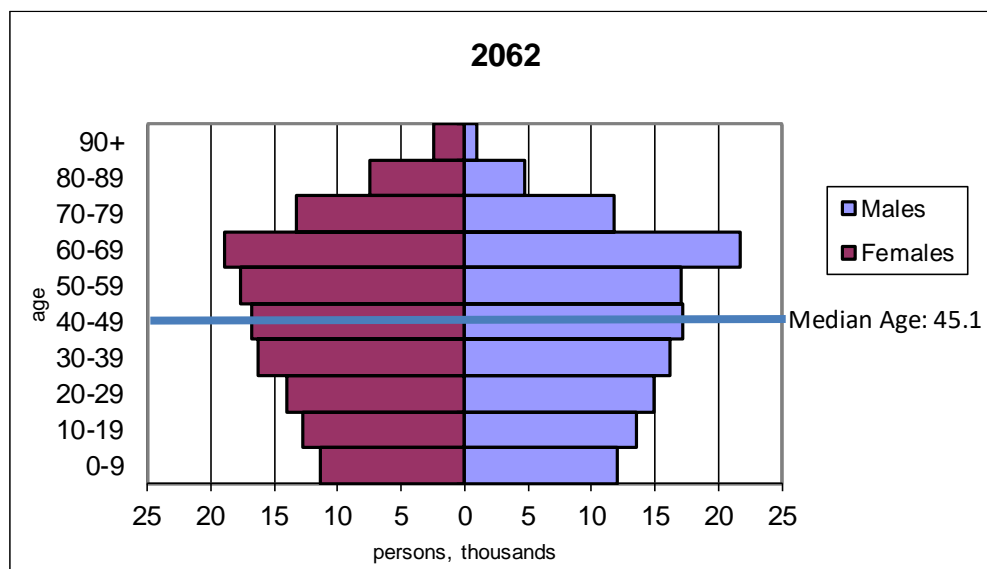


Table 3 – Population by Age Group, estimates 1982-2022

| Year | 0 - 4 | 5 - 14 | 15 - 24 | 25 - 34 | 35 - 44 | 45 - 54 | 55 - 64 | 65 - 74 | 75 - 84 | 85 plus |
|------|-------|--------|---------|---------|---------|---------|---------|---------|---------|---------|
| 1982 | 9,524 | 20,730 | 23,131 | 19,225 | 14,097 | 11,099 | 10,560 | 8,814 | 4,622 | 1,786 |
| 1983 | 9,522 | 20,510 | 23,327 | 19,534 | 14,952 | 11,178 | 10,593 | 8,898 | 4,753 | 1,835 |
| 1984 | 9,491 | 20,292 | 23,509 | 19,884 | 15,743 | 11,341 | 10,568 | 9,049 | 4,847 | 1,839 |
| 1985 | 9,569 | 20,111 | 23,272 | 20,221 | 16,404 | 11,532 | 10,503 | 9,213 | 4,918 | 1,876 |
| 1986 | 9,677 | 19,835 | 22,719 | 20,822 | 16,906 | 11,719 | 10,522 | 9,288 | 5,060 | 1,888 |
| 1987 | 9,643 | 19,710 | 22,065 | 20,962 | 17,461 | 11,864 | 10,516 | 9,334 | 5,206 | 1,880 |
| 1988 | 9,637 | 19,788 | 21,270 | 21,253 | 18,148 | 12,012 | 10,547 | 9,356 | 5,414 | 1,864 |
| 1989 | 9,779 | 19,867 | 20,510 | 21,462 | 18,769 | 12,355 | 10,623 | 9,272 | 5,633 | 1,883 |
| 1990 | 9,775 | 19,801 | 19,896 | 21,338 | 19,251 | 12,691 | 10,648 | 9,265 | 5,824 | 1,915 |
| 1991 | 9,520 | 19,860 | 19,584 | 20,788 | 19,629 | 13,157 | 10,722 | 9,289 | 5,939 | 1,881 |
| 1992 | 9,440 | 19,796 | 19,492 | 20,358 | 19,732 | 13,940 | 10,858 | 9,337 | 5,967 | 1,907 |
| 1993 | 9,508 | 19,861 | 19,506 | 20,243 | 20,022 | 14,767 | 10,964 | 9,331 | 5,991 | 1,984 |
| 1994 | 9,416 | 19,908 | 19,656 | 20,070 | 20,244 | 15,591 | 11,119 | 9,341 | 6,060 | 2,032 |
| 1995 | 9,145 | 20,130 | 19,554 | 19,817 | 20,512 | 16,376 | 11,363 | 9,249 | 6,155 | 2,114 |
| 1996 | 9,065 | 20,169 | 19,601 | 19,686 | 20,937 | 17,116 | 11,633 | 9,217 | 6,173 | 2,140 |
| 1997 | 8,706 | 20,128 | 19,385 | 19,341 | 21,254 | 17,821 | 11,779 | 9,293 | 6,217 | 2,171 |
| 1998 | 8,335 | 19,881 | 19,116 | 18,524 | 21,581 | 18,464 | 11,978 | 9,355 | 6,324 | 2,246 |
| 1999 | 8,139 | 19,723 | 18,961 | 18,048 | 21,773 | 19,052 | 12,449 | 9,489 | 6,296 | 2,351 |
| 2000 | 7,954 | 19,372 | 19,090 | 17,352 | 21,864 | 19,679 | 12,854 | 9,571 | 6,314 | 2,420 |
| 2001 | 7,578 | 19,094 | 19,299 | 16,923 | 21,583 | 20,231 | 13,349 | 9,749 | 6,424 | 2,435 |
| 2002 | 7,323 | 18,740 | 19,340 | 16,772 | 21,317 | 20,299 | 14,256 | 9,887 | 6,504 | 2,442 |
| 2003 | 7,225 | 18,357 | 19,321 | 16,715 | 21,016 | 20,366 | 15,168 | 10,095 | 6,492 | 2,472 |
| 2004 | 7,071 | 18,013 | 19,368 | 16,681 | 20,782 | 20,457 | 16,026 | 10,279 | 6,515 | 2,488 |
| 2005 | 6,895 | 17,643 | 19,383 | 16,551 | 20,447 | 20,693 | 16,812 | 10,480 | 6,577 | 2,583 |
| 2006 | 6,772 | 17,138 | 19,172 | 16,259 | 19,983 | 21,086 | 17,378 | 10,767 | 6,631 | 2,681 |
| 2007 | 6,829 | 16,547 | 19,033 | 15,933 | 19,328 | 21,471 | 18,070 | 11,038 | 6,698 | 2,764 |
| 2008 | 6,992 | 16,266 | 18,920 | 15,964 | 18,859 | 21,964 | 18,818 | 11,268 | 6,853 | 2,845 |
| 2009 | 7,117 | 16,160 | 18,855 | 15,902 | 18,612 | 22,352 | 19,474 | 11,632 | 6,962 | 2,825 |
| 2010 | 7,181 | 15,986 | 19,035 | 16,047 | 18,349 | 22,763 | 20,230 | 12,112 | 7,054 | 2,897 |
| 2011 | 7,355 | 15,823 | 19,258 | 16,265 | 18,622 | 22,838 | 20,922 | 12,662 | 7,231 | 2,987 |
| 2012 | 7,276 | 15,680 | 19,136 | 16,273 | 18,322 | 22,827 | 21,083 | 13,533 | 7,357 | 3,043 |
| 2013 | 7,171 | 15,608 | 18,638 | 16,058 | 18,001 | 22,368 | 21,281 | 14,400 | 7,502 | 3,067 |
| 2014 | 7,151 | 15,624 | 18,191 | 15,981 | 17,904 | 21,993 | 21,452 | 15,233 | 7,697 | 3,057 |
| 2015 | 7,118 | 15,589 | 17,894 | 16,051 | 17,724 | 21,586 | 21,796 | 15,942 | 7,803 | 3,043 |
| 2016 | 7,214 | 15,906 | 17,980 | 16,596 | 17,852 | 21,306 | 22,271 | 16,659 | 8,055 | 3,130 |
| 2017 | 7,337 | 16,408 | 18,487 | 17,269 | 18,205 | 21,234 | 22,619 | 17,323 | 8,300 | 3,220 |
| 2018 | 7,364 | 16,709 | 19,137 | 17,901 | 18,430 | 21,052 | 22,970 | 18,057 | 8,472 | 3,304 |
| 2019 | 7,292 | 17,090 | 20,413 | 18,722 | 18,792 | 20,902 | 23,232 | 18,657 | 8,898 | 3,421 |
| 2020 | 7,228 | 17,287 | 21,697 | 19,888 | 19,071 | 20,663 | 23,368 | 19,339 | 9,281 | 3,483 |
| 2021 | 7,208 | 17,358 | 22,057 | 21,334 | 19,485 | 20,731 | 23,218 | 19,990 | 9,771 | 3,606 |
| 2022 | 7,347 | 17,637 | 23,333 | 23,536 | 19,996 | 21,007 | 23,200 | 20,259 | 10,624 | 3,749 |

Table 4 – Population by Age Group, projections 2023-2062

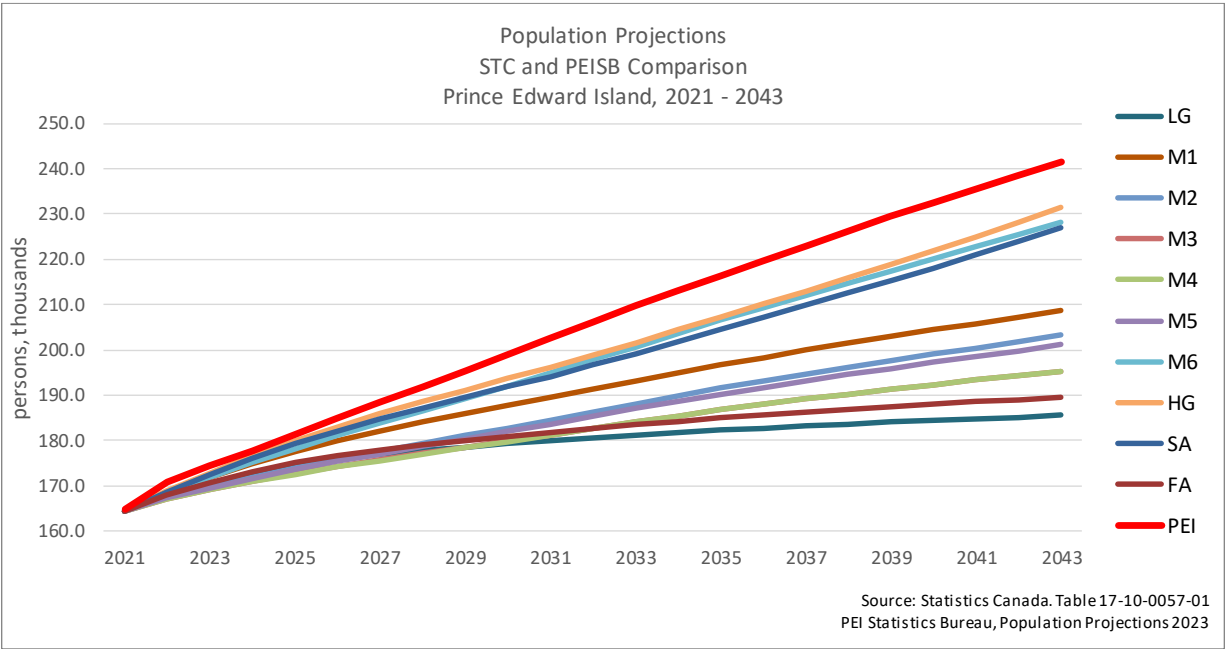
| Year | 0 - 4 | 5 - 14 | 15 - 24 | 25 - 34 | 35 - 44 | 45 - 54 | 55 - 64 | 65 - 74 | 75 - 84 | 85 plus |
|------|--------|--------|---------|---------|---------|---------|---------|---------|---------|---------|
| 2023 | 7,602 | 17,652 | 22,919 | 25,788 | 20,399 | 21,278 | 22,986 | 20,394 | 11,471 | 3,837 |
| 2024 | 7,882 | 17,633 | 22,384 | 27,978 | 20,808 | 21,465 | 22,925 | 20,601 | 12,215 | 3,928 |
| 2025 | 8,215 | 17,623 | 22,035 | 29,807 | 21,401 | 21,633 | 22,723 | 20,923 | 12,906 | 4,051 |
| 2026 | 8,546 | 17,677 | 21,856 | 31,345 | 22,068 | 21,770 | 22,561 | 21,332 | 13,502 | 4,187 |
| 2027 | 8,870 | 17,789 | 21,945 | 32,460 | 22,815 | 22,009 | 22,469 | 21,660 | 14,076 | 4,306 |
| 2028 | 9,181 | 18,061 | 22,032 | 33,353 | 23,668 | 22,297 | 22,245 | 22,011 | 14,651 | 4,444 |
| 2029 | 9,473 | 18,297 | 22,259 | 34,007 | 24,734 | 22,562 | 22,050 | 22,237 | 15,164 | 4,710 |
| 2030 | 9,727 | 18,606 | 22,455 | 34,280 | 26,205 | 22,875 | 21,862 | 22,397 | 15,680 | 4,919 |
| 2031 | 9,951 | 18,981 | 22,685 | 34,191 | 27,863 | 23,336 | 21,957 | 22,247 | 16,127 | 5,188 |
| 2032 | 10,139 | 19,352 | 22,857 | 33,890 | 29,899 | 23,720 | 22,134 | 22,111 | 16,280 | 5,662 |
| 2033 | 10,288 | 19,935 | 22,859 | 33,430 | 32,102 | 24,089 | 22,386 | 21,909 | 16,426 | 6,130 |
| 2034 | 10,393 | 20,528 | 22,842 | 32,893 | 34,295 | 24,475 | 22,560 | 21,834 | 16,608 | 6,510 |
| 2035 | 10,460 | 21,156 | 22,853 | 32,547 | 36,135 | 25,068 | 22,731 | 21,662 | 16,903 | 6,855 |
| 2036 | 10,491 | 21,748 | 22,935 | 32,359 | 37,682 | 25,737 | 22,875 | 21,523 | 17,256 | 7,124 |
| 2037 | 10,493 | 22,285 | 23,069 | 32,428 | 38,773 | 26,482 | 23,113 | 21,443 | 17,539 | 7,349 |
| 2038 | 10,486 | 22,776 | 23,376 | 32,494 | 39,641 | 27,342 | 23,407 | 21,260 | 17,842 | 7,598 |
| 2039 | 10,477 | 23,194 | 23,642 | 32,701 | 40,264 | 28,391 | 23,683 | 21,094 | 18,053 | 7,869 |
| 2040 | 10,472 | 23,529 | 23,993 | 32,886 | 40,491 | 29,858 | 24,003 | 20,937 | 18,197 | 8,112 |
| 2041 | 10,473 | 23,796 | 24,415 | 33,101 | 40,358 | 31,489 | 24,464 | 21,039 | 18,079 | 8,339 |
| 2042 | 10,487 | 23,995 | 24,834 | 33,268 | 40,020 | 33,493 | 24,852 | 21,219 | 17,941 | 8,510 |
| 2043 | 10,495 | 24,139 | 25,465 | 33,248 | 39,519 | 35,662 | 25,220 | 21,455 | 17,749 | 8,673 |
| 2044 | 10,512 | 24,235 | 26,118 | 33,223 | 38,959 | 37,831 | 25,617 | 21,628 | 17,694 | 8,802 |
| 2045 | 10,525 | 24,293 | 26,793 | 33,216 | 38,588 | 39,642 | 26,206 | 21,794 | 17,555 | 9,003 |
| 2046 | 10,538 | 24,331 | 27,433 | 33,286 | 38,389 | 41,173 | 26,879 | 21,945 | 17,472 | 9,190 |
| 2047 | 10,552 | 24,348 | 28,020 | 33,423 | 38,435 | 42,277 | 27,630 | 22,187 | 17,440 | 9,319 |
| 2048 | 10,569 | 24,355 | 28,558 | 33,718 | 38,470 | 43,160 | 28,481 | 22,479 | 17,329 | 9,486 |
| 2049 | 10,587 | 24,361 | 29,033 | 33,983 | 38,656 | 43,807 | 29,542 | 22,749 | 17,244 | 9,634 |
| 2050 | 10,614 | 24,369 | 29,416 | 34,319 | 38,815 | 44,044 | 31,012 | 23,054 | 17,171 | 9,713 |
| 2051 | 10,667 | 24,381 | 29,723 | 34,734 | 39,006 | 43,930 | 32,652 | 23,512 | 17,273 | 9,620 |
| 2052 | 10,722 | 24,401 | 29,959 | 35,115 | 39,143 | 43,587 | 34,648 | 23,888 | 17,428 | 9,499 |
| 2053 | 10,800 | 24,437 | 30,147 | 35,722 | 39,114 | 43,095 | 36,821 | 24,250 | 17,619 | 9,371 |
| 2054 | 10,892 | 24,481 | 30,269 | 36,346 | 39,079 | 42,536 | 38,987 | 24,640 | 17,785 | 9,336 |
| 2055 | 10,993 | 24,534 | 30,355 | 36,978 | 39,060 | 42,162 | 40,782 | 25,206 | 17,933 | 9,303 |
| 2056 | 11,100 | 24,592 | 30,410 | 37,571 | 39,094 | 41,939 | 42,276 | 25,845 | 18,073 | 9,324 |
| 2057 | 11,218 | 24,667 | 30,443 | 38,122 | 39,210 | 41,970 | 43,355 | 26,569 | 18,298 | 9,351 |
| 2058 | 11,336 | 24,758 | 30,461 | 38,617 | 39,474 | 41,993 | 44,201 | 27,378 | 18,554 | 9,360 |
| 2059 | 11,457 | 24,866 | 30,482 | 39,053 | 39,709 | 42,168 | 44,800 | 28,385 | 18,790 | 9,378 |
| 2060 | 11,576 | 25,008 | 30,495 | 39,401 | 40,023 | 42,324 | 45,022 | 29,786 | 19,049 | 9,375 |
| 2061 | 11,692 | 25,172 | 30,518 | 39,669 | 40,412 | 42,501 | 44,893 | 31,349 | 19,429 | 9,384 |
| 2062 | 11,796 | 25,360 | 30,549 | 39,881 | 40,771 | 42,643 | 44,556 | 33,248 | 19,737 | 9,424 |

Comparison to Statistics Canada Projections

Statistics Canada releases population projections for provinces and territories every five years, which include 10 growth scenarios. The low growth (LG) scenario assumes a lower fertility rate and lower international immigration than the PEI projection scenario discussed in this report. The 6 medium growth scenarios (M1 – M6) are based on a slightly higher fertility rate, with slightly lower international immigration. The difference in the 6 medium growth scenarios is the period on which the trends for inter-provincial migration is based. The high growth scenario (HG) is based on a much higher fertility rate and also higher international immigration. The slow aging scenario (SA) is also based on a much higher fertility rate and higher international immigration but with a lower life expectancy than the HG scenario. The fast aging scenario (FA) is based on a lower fertility rate and low international immigration. The starting point for all Statistics Canada scenarios for PEI is 164,300, which was the 2021 population estimate at the time the projections were produced.

As can be seen in Diagram 12, the PEI Statistics Bureau projections exceed all Statistics Canada’s scenarios for the duration of the projection period, with a slightly steeper growth trajectory than the HG scenario. The PEI projections begin with the most recent release of Statistics Canada’s population estimates for 2022, which is 1,900 people above the projected 2022 population in the HG scenario.

Diagram 12 – Statistics Canada Population Projection Scenarios



Source: Statistics Canada. Table 17-10-0057-01 Projected population, by projection scenario, age and sex, as of July 1

Limitations of Population Projections

In general, all assumptions relating to the components of population change (i.e., migration, births and deaths) are based on past conditions, modified wherever possible to take into consideration current policy objectives and possible future changes. Consequently, the resulting population projections are not necessarily what will be, but rather what could be, given the realization of these conditions. It is certainly possible that unforeseen changes in factors such as government policy, economic development, land use and zoning will affect future populations. As a result, the projections should be regarded as only one possible scenario of the future size and age-gender structure of the population.

The Component/Cohort-Survival Method

Prince Edward Island population projections result from the application of a 'component/cohort-survival' population model to assumptions dealing with fertility, mortality and migration. The component/cohort-survival method requires separate projections of each of the components of population change, namely fertility, mortality and net migration. With this information, and with a base year age-specific estimate of population, a projection for any subsequent year is made by promoting each age group in the preceding year to next highest age group, while at the same time taking into account the effects of net migration, deaths and births.

Specifically, beginning from a base year estimate of population by single year of age and sex, each age (i) in the base year (t) is promoted to the next higher age group ($i+1$) in time ($t+1$), while at the same time taking into account the effects of net migration, births and/or deaths in that age cohort. This process is then repeated for the number of years required.

Data tables by single year of age and sex in Excel format are available on request.

For more information, contact:

Colin Mosley

Economist - Statistics

Economics, Statistics, and Federal Fiscal Relations

Department of Finance

(902) 368-4035

cdmosley@gov.pe.ca

Projections are calculated by Prince Edward Island Statistics Bureau, based on historical population estimates provided by Statistics Canada, Centre for Demography, 1982 to 2022.

Source of population estimates and components of growth 1982 to 2022:
Statistics Canada.

Table 17-10-0005-01 Population estimates on July 1st, by age and sex

Table 17-10-0006-01 Estimates of deaths, by age and sex, annual

Table 17-10-0016-01 Estimates of births, by sex, annual

Table 17-10-0015-01 Estimates of the components of interprovincial migration, by age and sex, annual

Table 17-10-0014-01 Estimates of the components of international migration, by age and sex, annual

Table 17-10-0057-01 Projected population, by projection scenario, age and sex, as of July 1